

© 2013 RYAN SENATORE ARCHITECTURE

OFFICES FOR PORTLAND BUILDERS
 70 CENTER STREET, SUITE 304
 PORTLAND, MAINE



CONSULTANTS:

REVISIONS:

DATE: MAY 29, 2013

PROJECT No. 1305

DRAWN BY: RJS

CHECKED BY: RJS

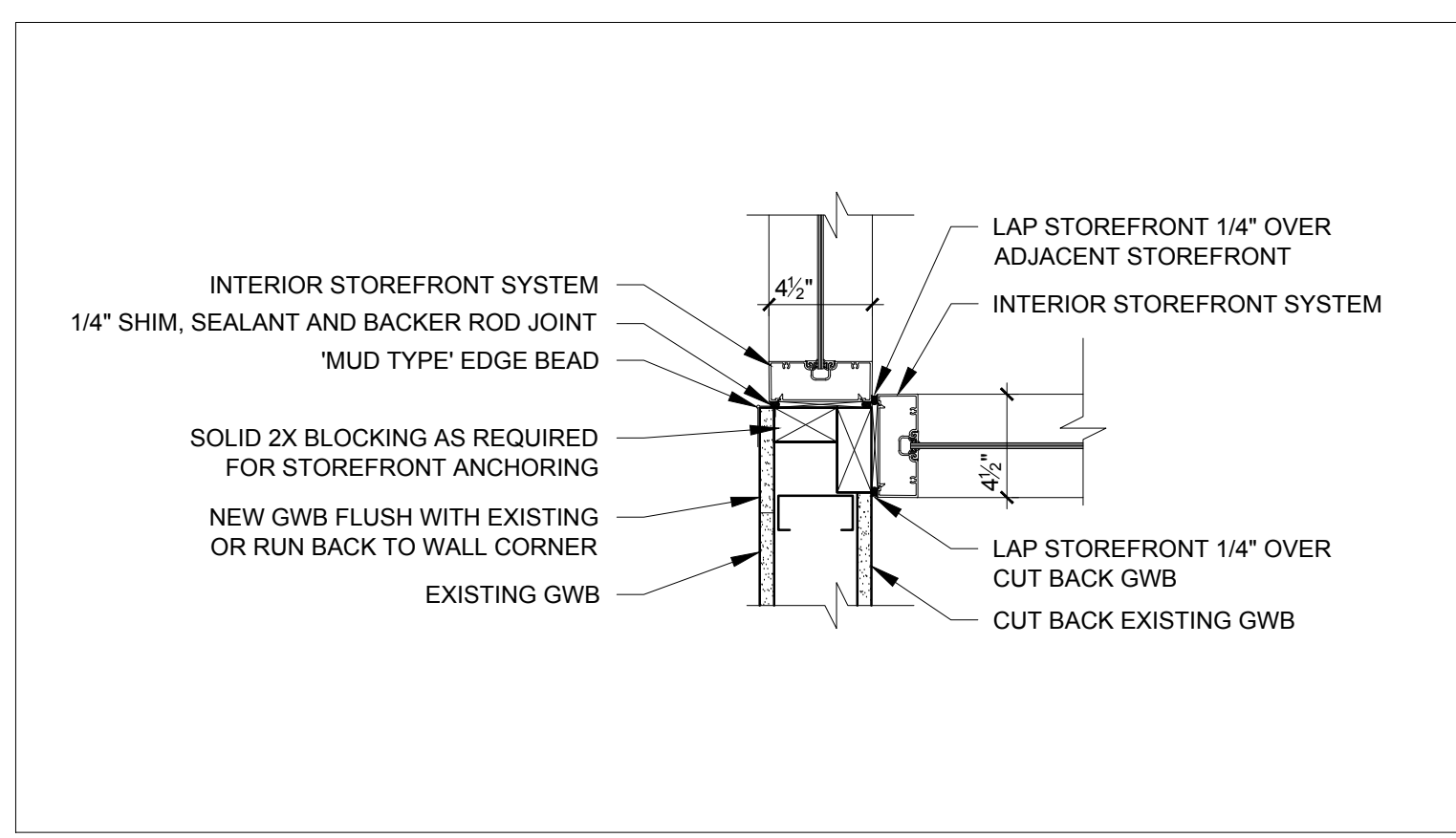
SCALE: AS NOTED

SHEET TITLE:
 INTERIOR ELEVATIONS AND DETAILS

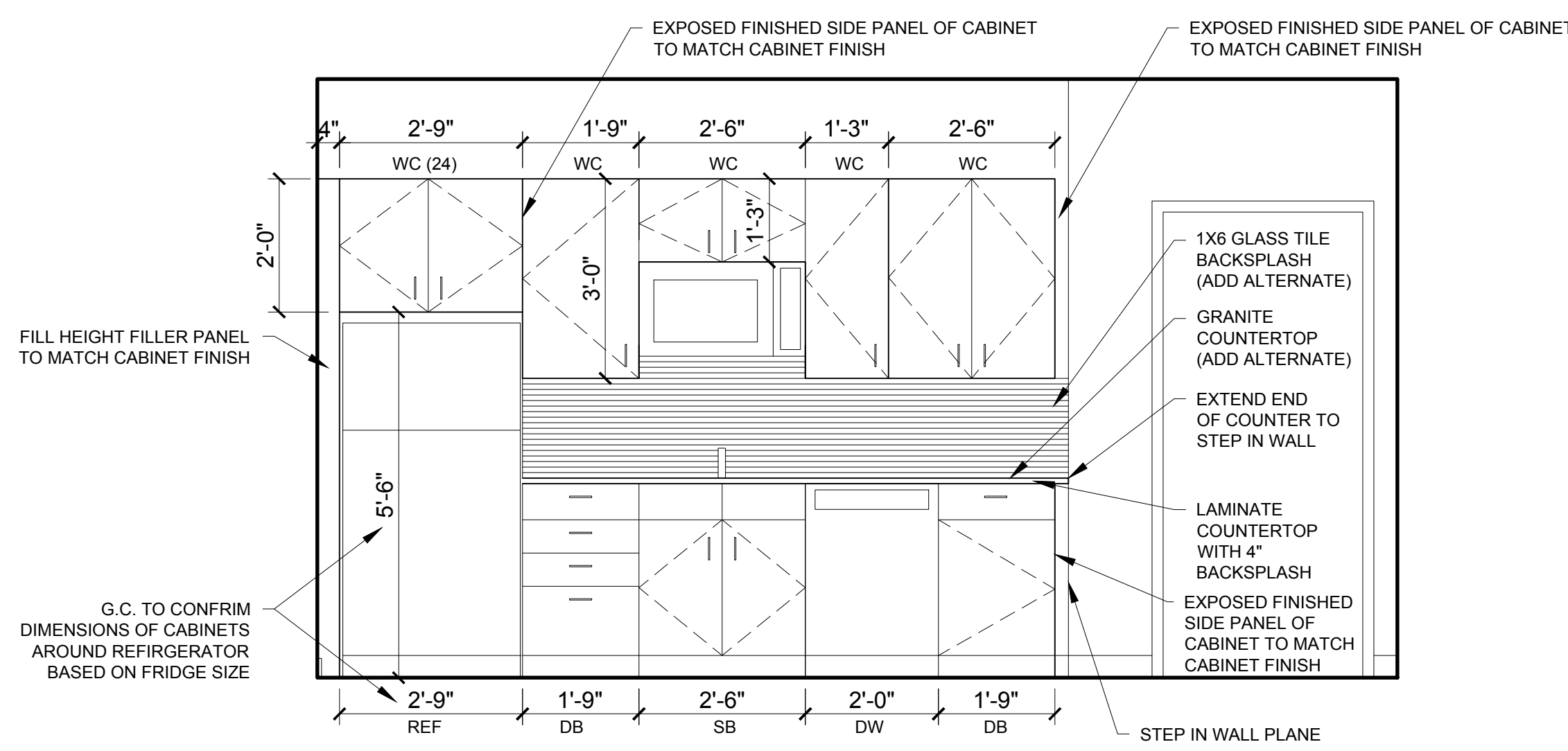
A2-1

- NOTES**
- G.C. TO CONFIRM AND COORDINATE ALL ROUGH FRAMING DIMENSIONS FOR ALL BUILD ELEMENTS.
 - PROVIDE APPROPRIATE BLOCKING IN WALLS BEHIND ALL FIXTURES, PARTITIONS AND ACCESSORIES. BLOCKING FOR GRAB BARS TO BE PROVIDED IN WALLS OF BATHROOMS
 - PROVIDE MOISTURE RESISTANT GWB AT ALL WALLS IN BATHROOMS TYPICAL
 - PROVIDE FIRE EXTINGUISHER ON BRACKET IN BASE CABINET BELOW KITCHEN SINK - TYPICAL

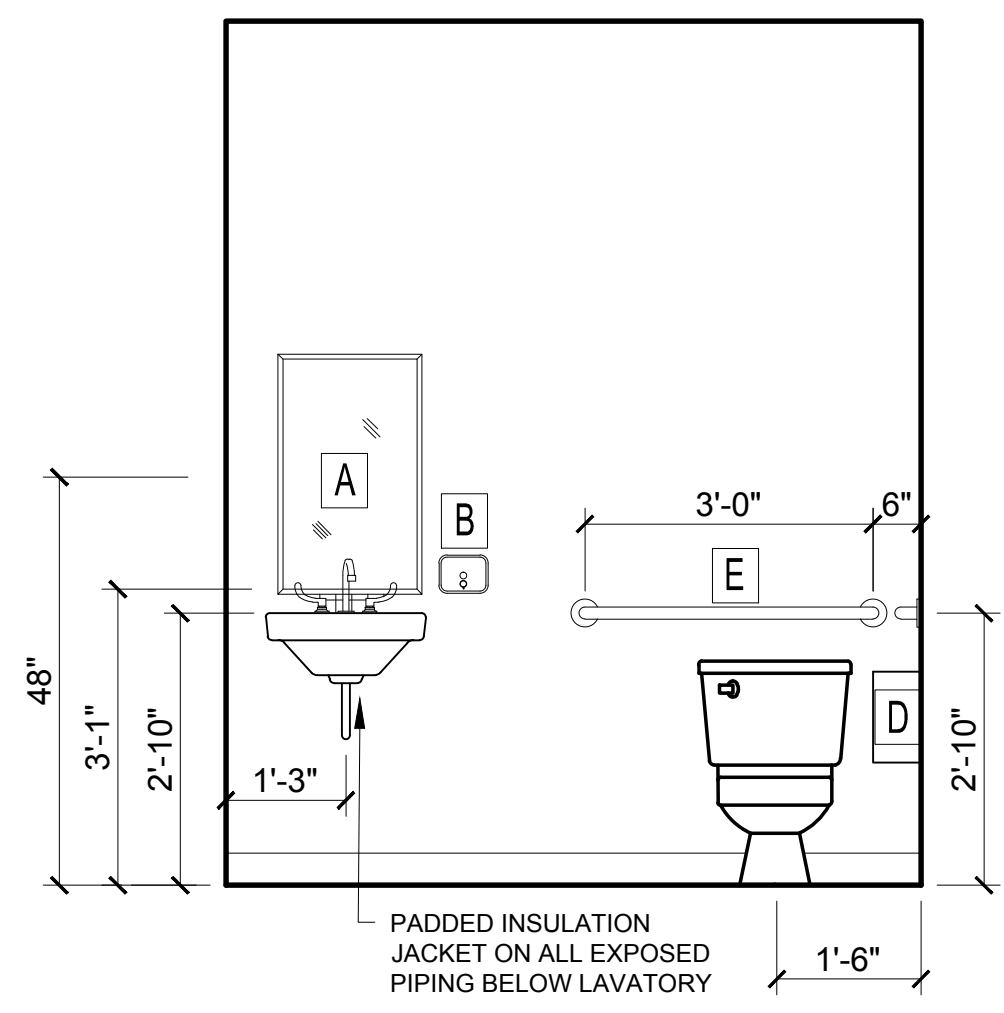
- CABINETRY AND APPLIANCE ABBREVIATIONS**
- DB = DRAWER BASE
 - DRB = DOOR BASE
 - SB = SINK BASE
 - WC = WALL CABINET
 - WC(24) = WALL CABINET 24" DEEP
 - PU = PANTRY UNIT 24" DEEP
 - OS = OPEN SHELVES
 - RA = RANGE
 - DW = DISHWASHER
 - REF = REFRIGERATOR



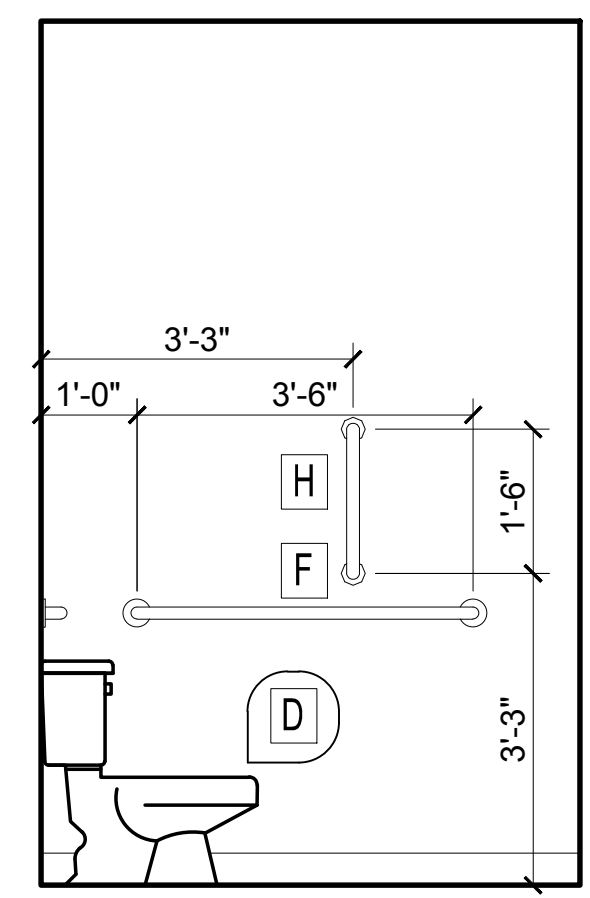
9 PLAN DETAIL AT STOREFRONT
 1-1/2"x1'-0"



6 INTERIOR ELEVATION - KITCHENETTE
 1/2"x1'-0"

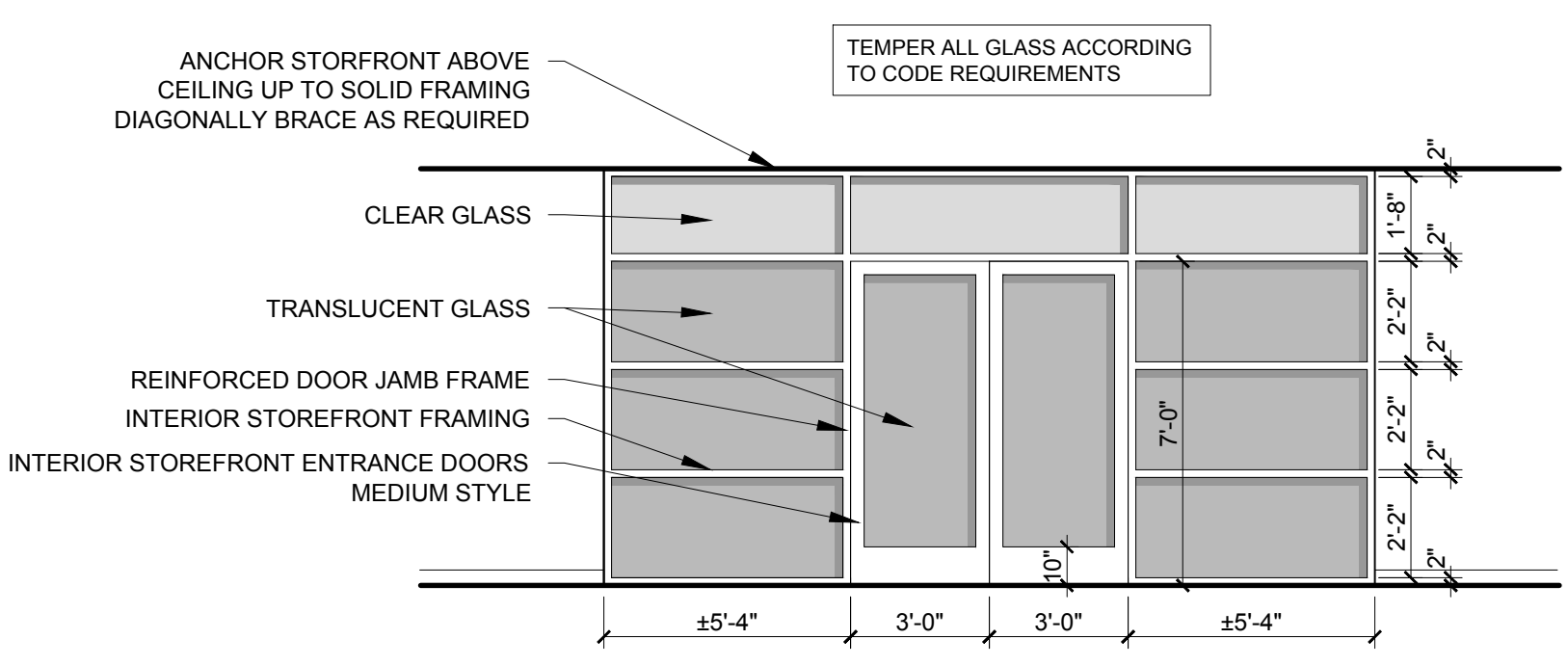


7 INTERIOR ELEVATION - TOILET BACK WALL
 1/2"x1'-0"

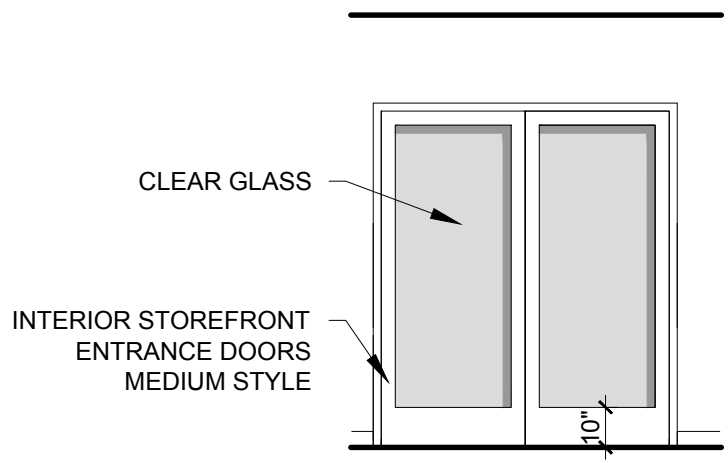


8 INTERIOR ELEVATION - TOILET SIDE WALL
 1/2"x1'-0"

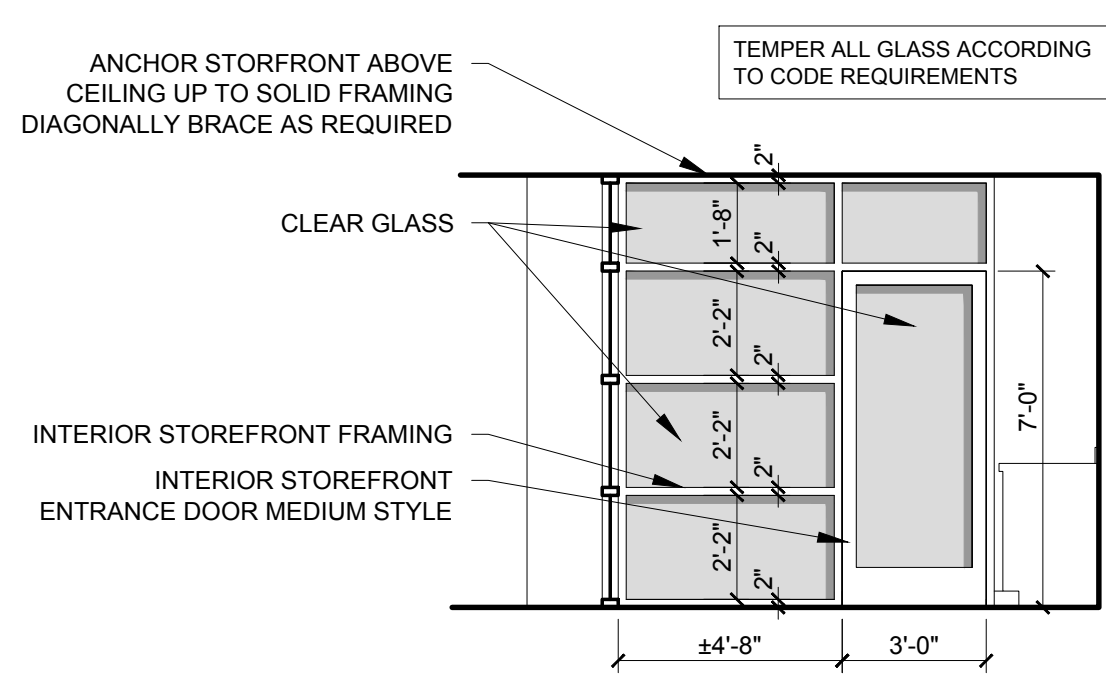
- TOILET ROOM NOTES**
- WHEN GIVEN A RANGE OF DIMENSIONS FOR PLACEMENT, PLACE ALL FIXTURES OF SAME TYPE AT THE SAME ELEVATION THROUGHOUT, UNLESS OTHERWISE DIRECTED.
 - MIRRORS TO BE CENTERED OVER SINKS
 - PROVIDE APPROPRIATE BLOCKING IN WALLS BEHIND ALL FIXTURES, PARTITIONS, GRAB BARS AND ACCESSORIES.
- TOILET ACCESSORIES KEY**
- A MIRROR 18" x 36" NOM.
 - B SOAP DISPENSER - PBOIBC
 - C NOT USED
 - D TOILET PAPER DISPENSER
 - E GRAB BAR 36" (1 1/4" TO 1 1/2" O.D.)
 - F GRAB BAR 42" (1 1/4" TO 1 1/2" O.D.)
 - G NOT USED
 - H GRAB BAR 18" (1 1/4" TO 1 1/2" O.D.)



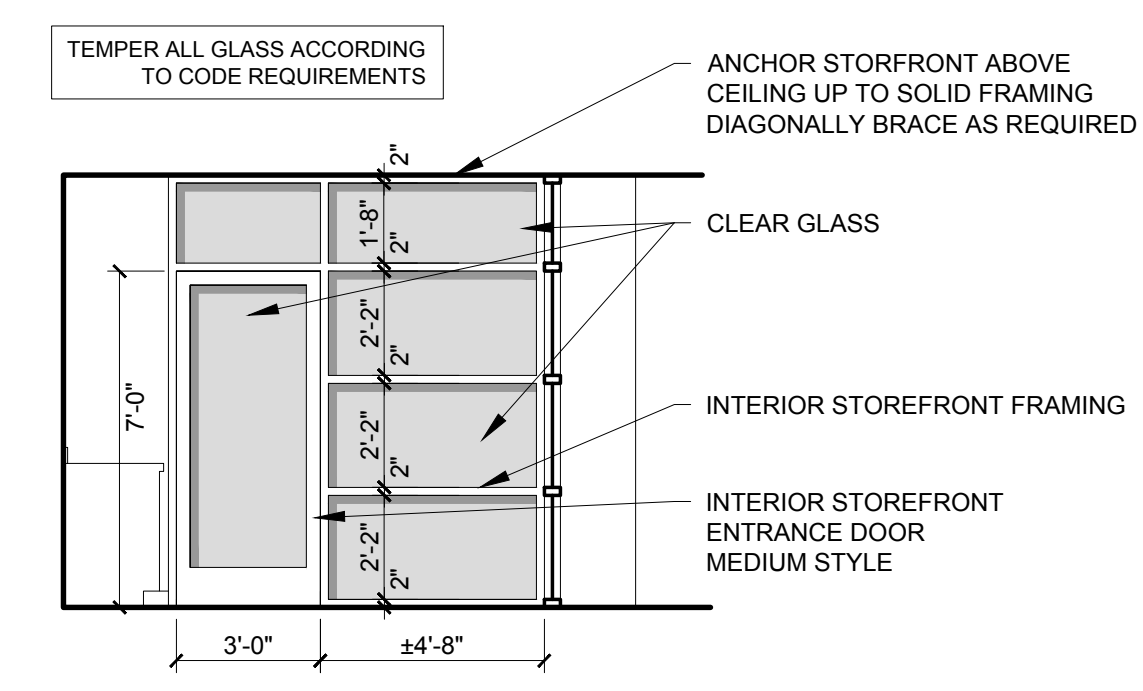
1 INTERIOR ELEVATION - STOREFRONT 1
 1/4"x1'-0"



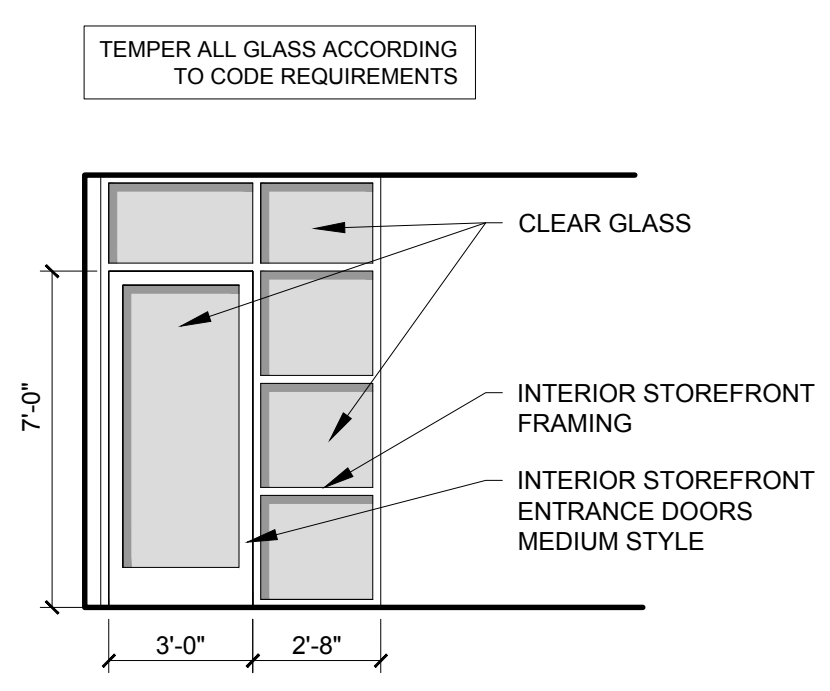
2 INTERIOR ELEVATION - STOREFRONT 1
 1/4"x1'-0"



3 INTERIOR ELEVATION - STOREFRONT 3
 1/4"x1'-0"



4 INTERIOR ELEVATION - STOREFRONT 4
 1/4"x1'-0"



5 INTERIOR ELEVATION - STOREFRONT 5
 1/4"x1'-0"