



© 2013 RYAN SENATORE ARCHITECTURE

OFFICES FOR PORTLAND BUILDERS
 70 CENTER STREET, SUITE 304
 PORTLAND, MAINE



RYAN SENATORE ARCHITECTURE
 67 GRAY ROAD
 GORHAM, MAINE 04038
 207-650-6414
 senatorearchitecture.com

CONSULTANTS:

REVISIONS:

DATE: MAY 29, 2013

PROJECT No. 1305

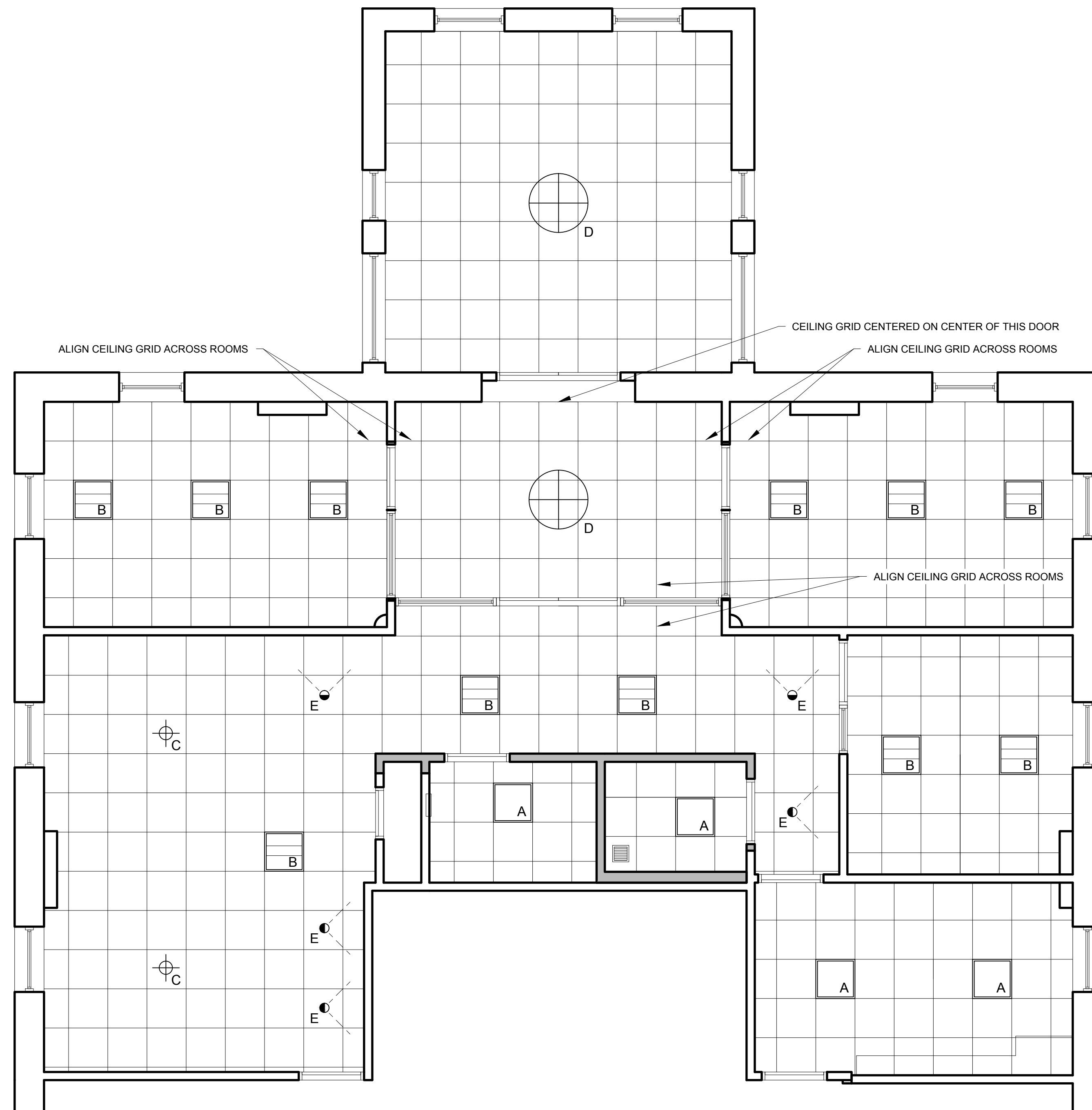
DRAWN BY: RJS

CHECKED BY: RJS

SCALE: AS NOTED

SHEET TITLE:
 REFLECTED
 CEILING PLAN

A1-2



- REFLECTED CEILING PLAN NOTES:**
- 1.) MODIFY EXISTING EMERGENCY AND EXIT LIGHTING SYSTEM TO ACCOMMODATE NEW PLAN LAYOUT AND TO MEET ALL APPLICABLE CODES
 - 2.) MODIFY EXISTING VENTILATION SYSTEM TO ACCOMMODATE NEW PLAN LAYOUT AND TO MEET ALL APPLICABLE CODES
 - 3.) ALL CEILING HEIGHTS ARE 9'-0" UNLESS OTHERWISE NOTED
 - 4.) REUSE EXISTING CEILING GRID IF POSSIBLE, FOR LOCATIONS NEEDING REPLACEMENT INSTALL PER THIS DRAWING
 - 5.) PROVIDE NEW CEILING TILES THROUGHOUT SPACE

REFLECTED CEILING PLAN + LIGHTING LEGEND

SYMBOL	DESCRIPTION
	2X2 RECESSED FIXTURE IN CEILING GRID
	2X2 RECESSED INDIRECT FIXTURE IN CEILING GRID
	HUNG PENDANT FIXTURE
	HUNG (CLOSE TO CEILING) PENDANT FIXTURE
	RECESSED WALL WASHER
	GRILLE FOR BATHROOM EXHAUST FAN



1 REFLECTED CEILING PLAN
 1/4"=1'-0"