



January 15, 2014

Rick Knowland, Senior Planner
CITY OF PORTLAND
389 Congress Street
Portland, Maine 04101-3509

RE: Cumberland County Civic Center Renovation Project
Exterior Signage Master plan

Dear Rick:

Attached are details and renderings showing the exterior Signage Master plan for the Planning Authority to review as per the conditions of approval (item #6) of the Planning Board. This includes electronic message signs shown in the renderings for the new Southeast and Northwest entrances.

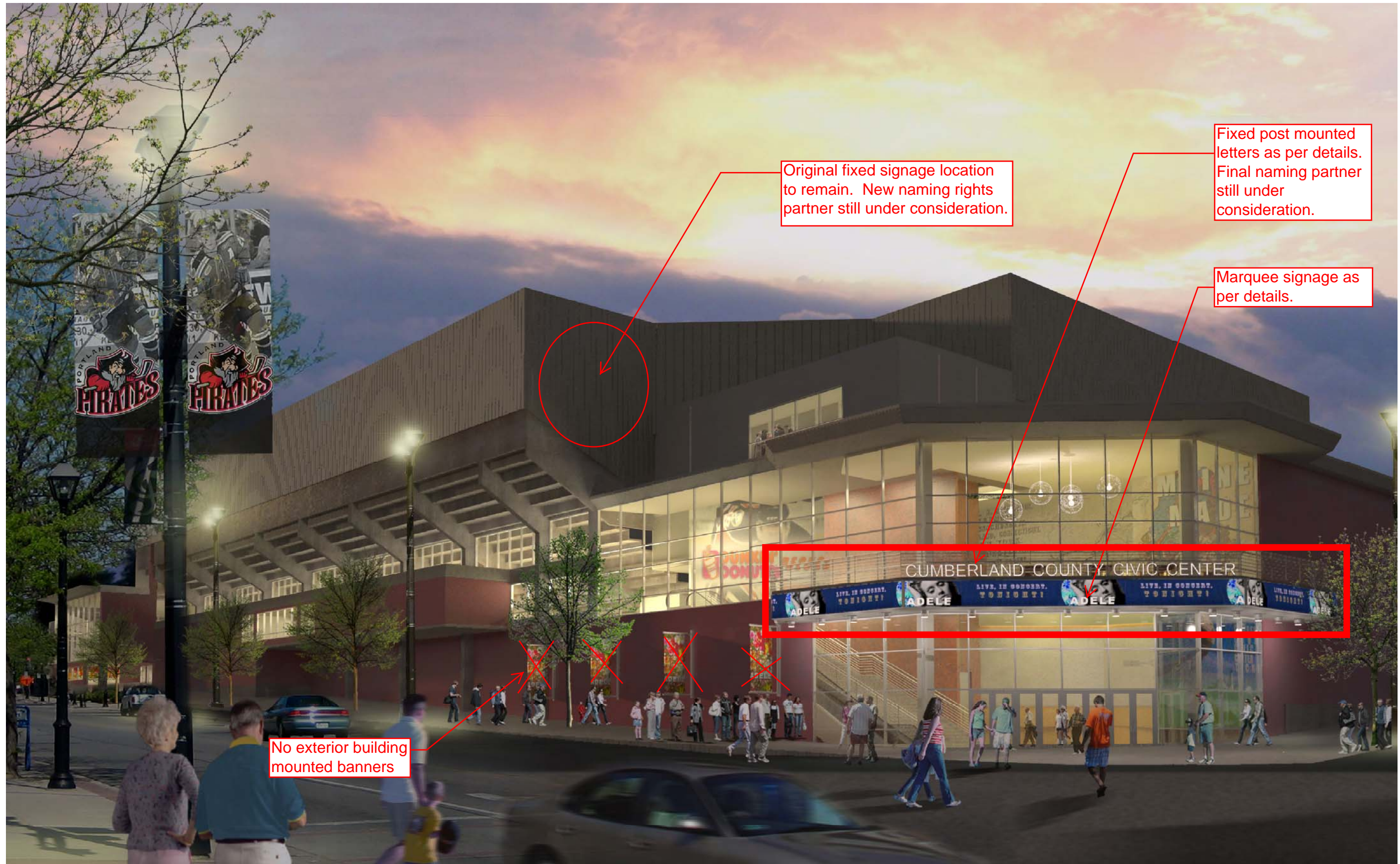
The proposed exterior signs remain as per the original renderings submitted.

Please let us know if you have any questions related to this exterior signage plan. Thank you.

Sincerely,

Steven W. Crane
General Manager

CC: Mike Johanning, WBRC A/E



Original fixed signage location to remain. New naming rights partner still under consideration.

Fixed post mounted letters as per details. Final naming partner still under consideration.

Marquee signage as per details.

No exterior building mounted banners



PROPOSED SOUTHEAST ENTRANCE
Cumberland County Civic Center Renovation

Portland, Maine
MAY 10, 2012



Fixed post mounted letters
as per details. Final
naming partner still under
consideration.

Marquee signage as per
details.



PROPOSED NORTHWEST ENTRANCE
Cumberland County Civic Center Renovation

Portland, Maine
MAY 10, 2012





Original fixed signage location to remain. New naming rights partner still under consideration.

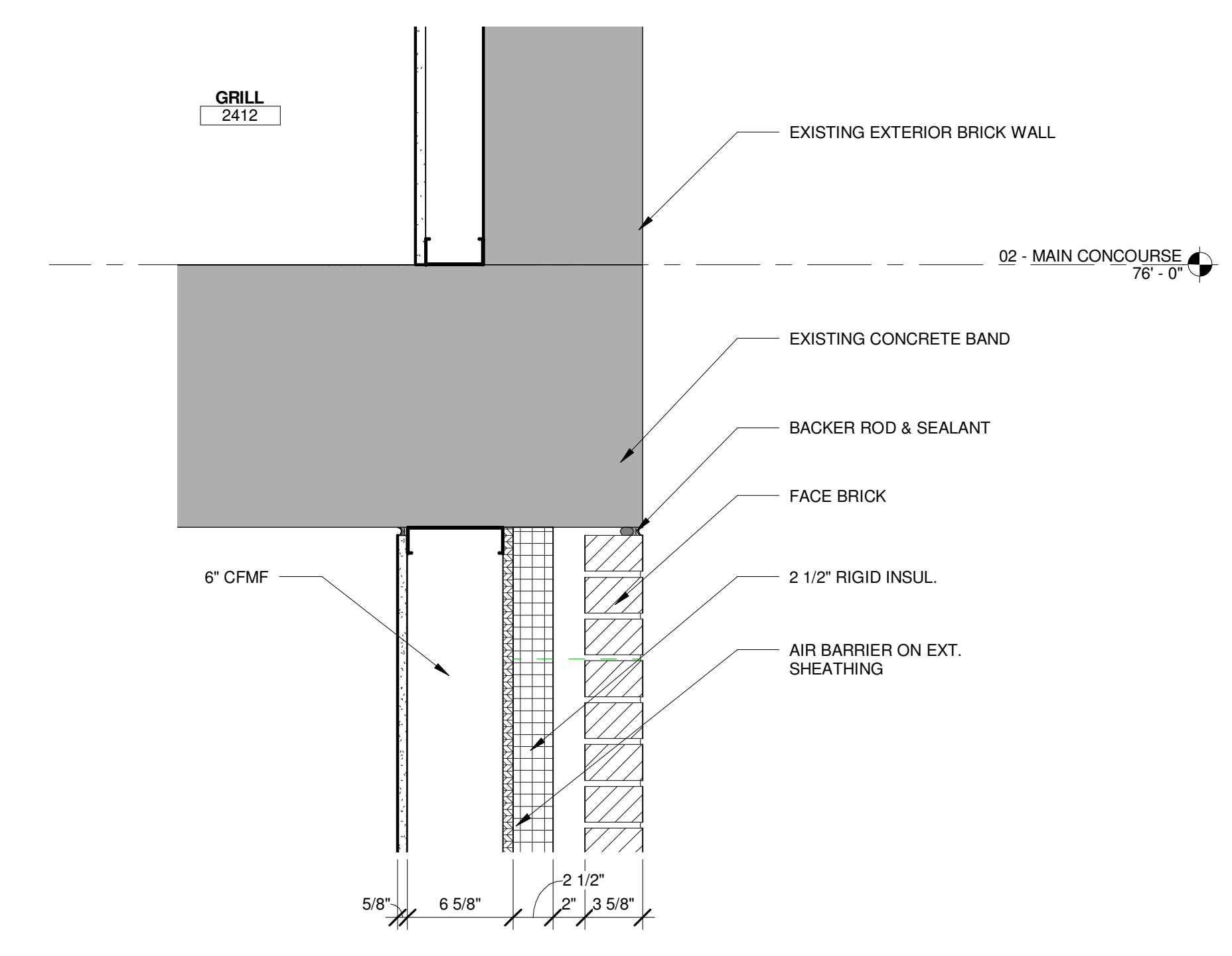


EXISTING SOUTHEAST ENTRANCE

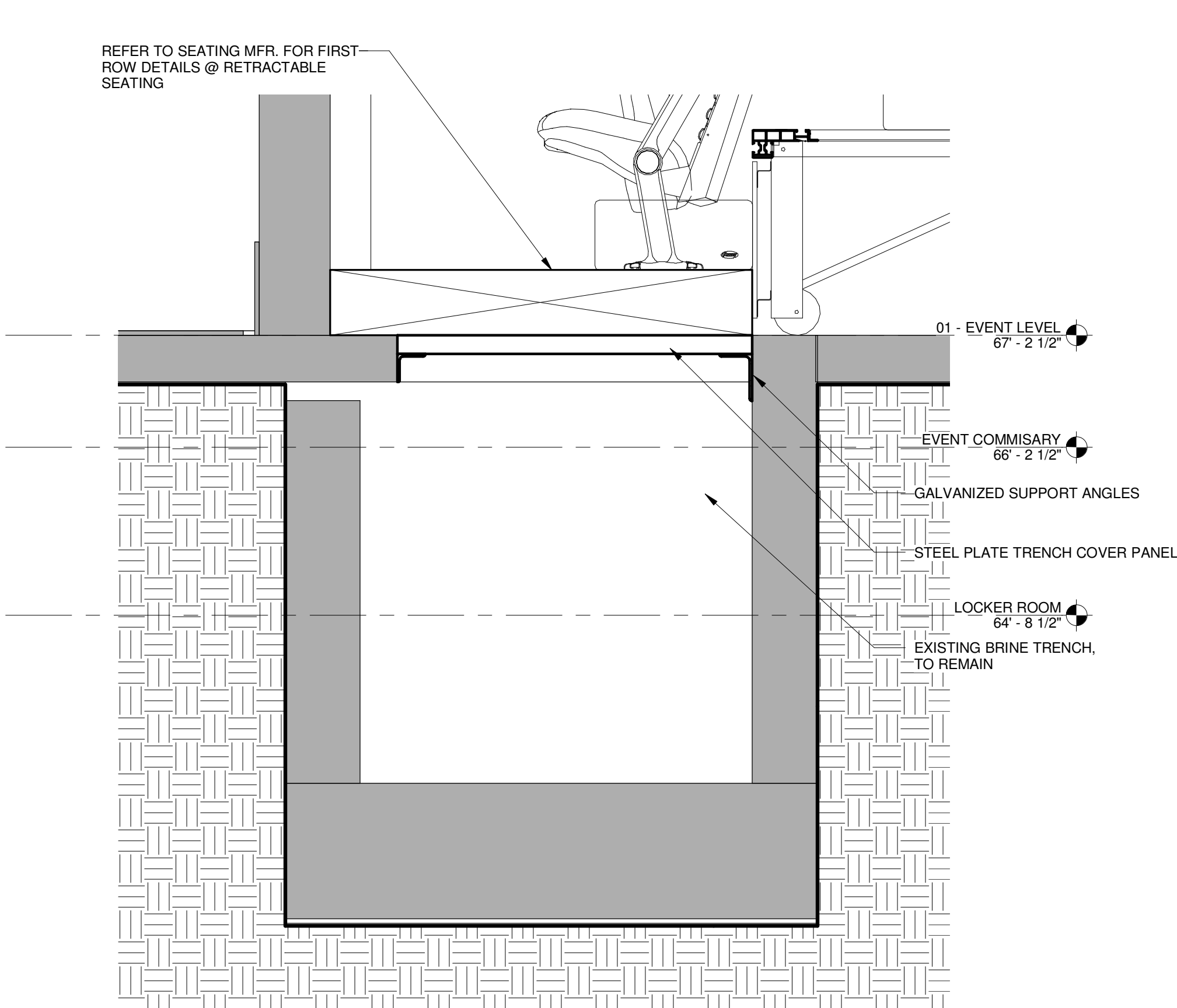
Cumberland County Civic Center Renovation

Portland, Maine
MAY 10, 2012

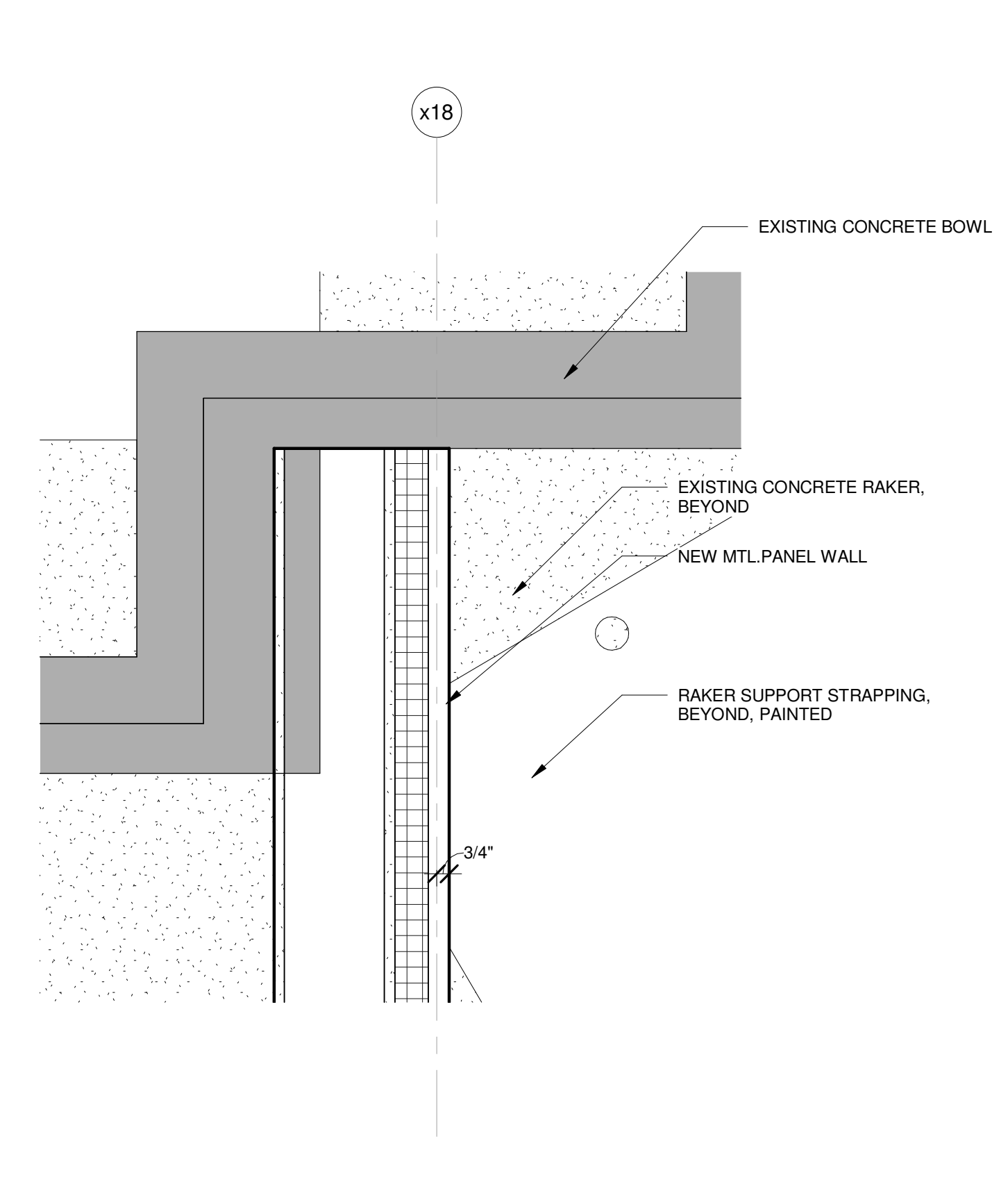




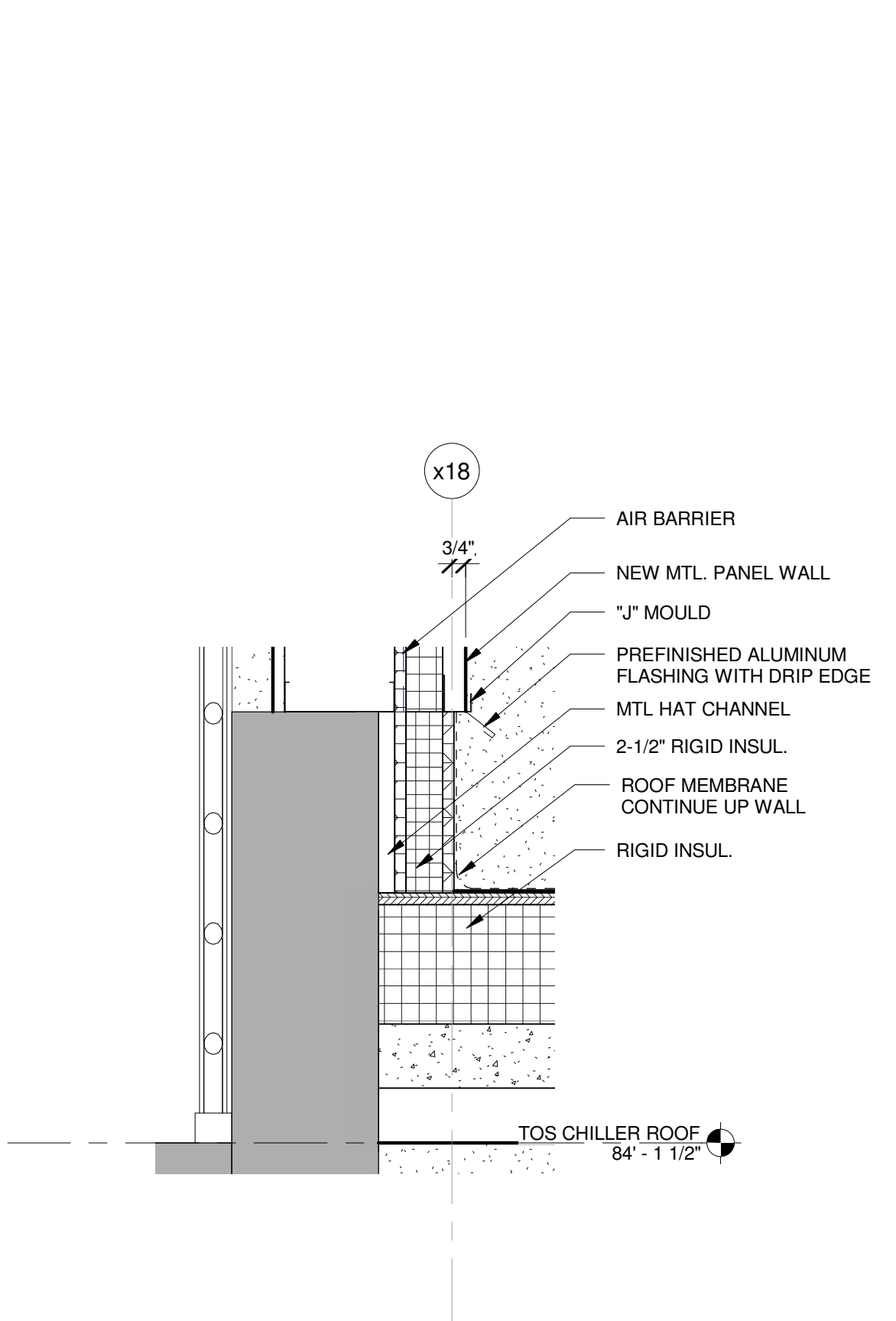
5 Detail 8 - WALL SECTION DETAIL
1 1/2" = 1'-0"



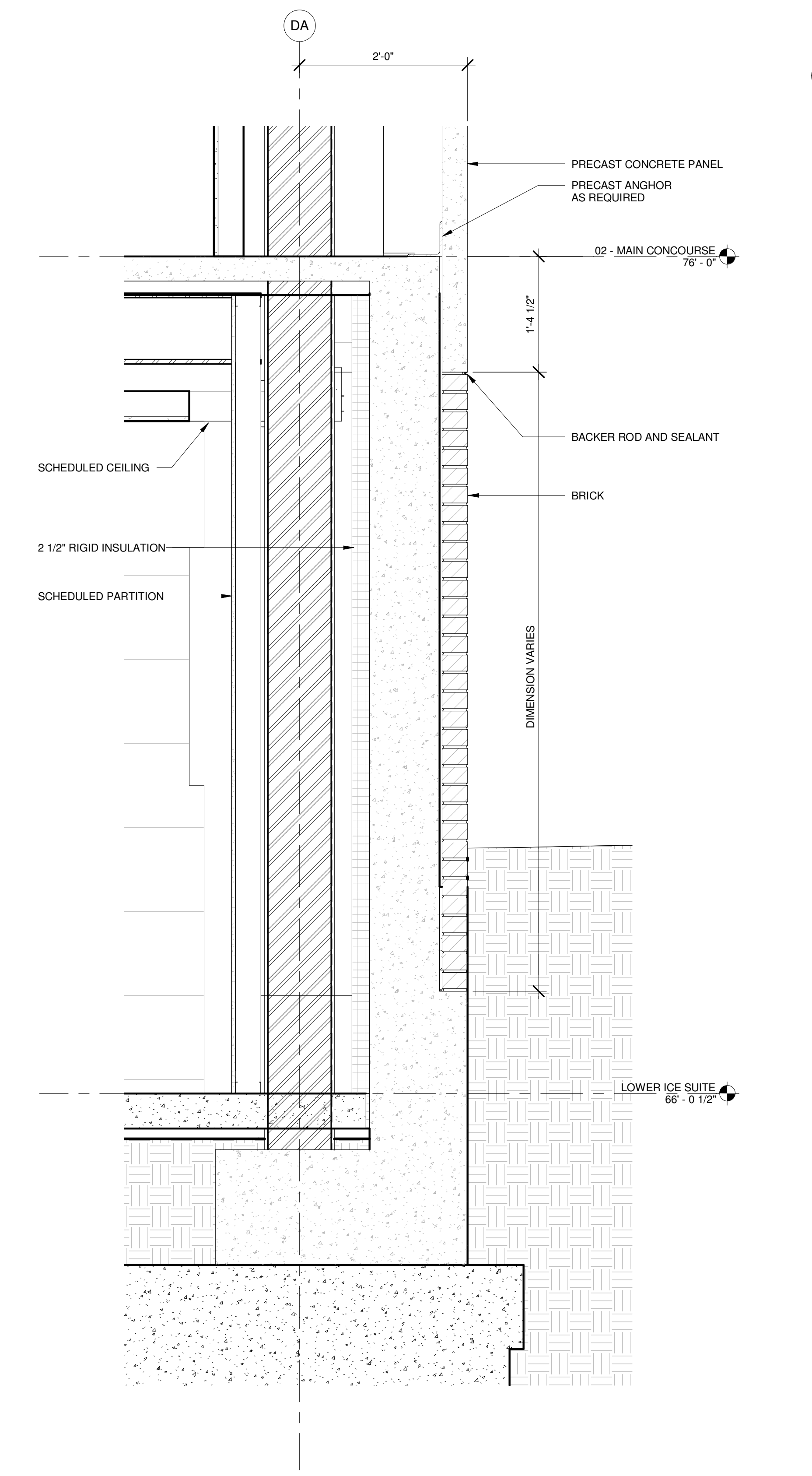
7 SECTION DETAIL - BRINE TRENCH COVER
1" = 1'-0"



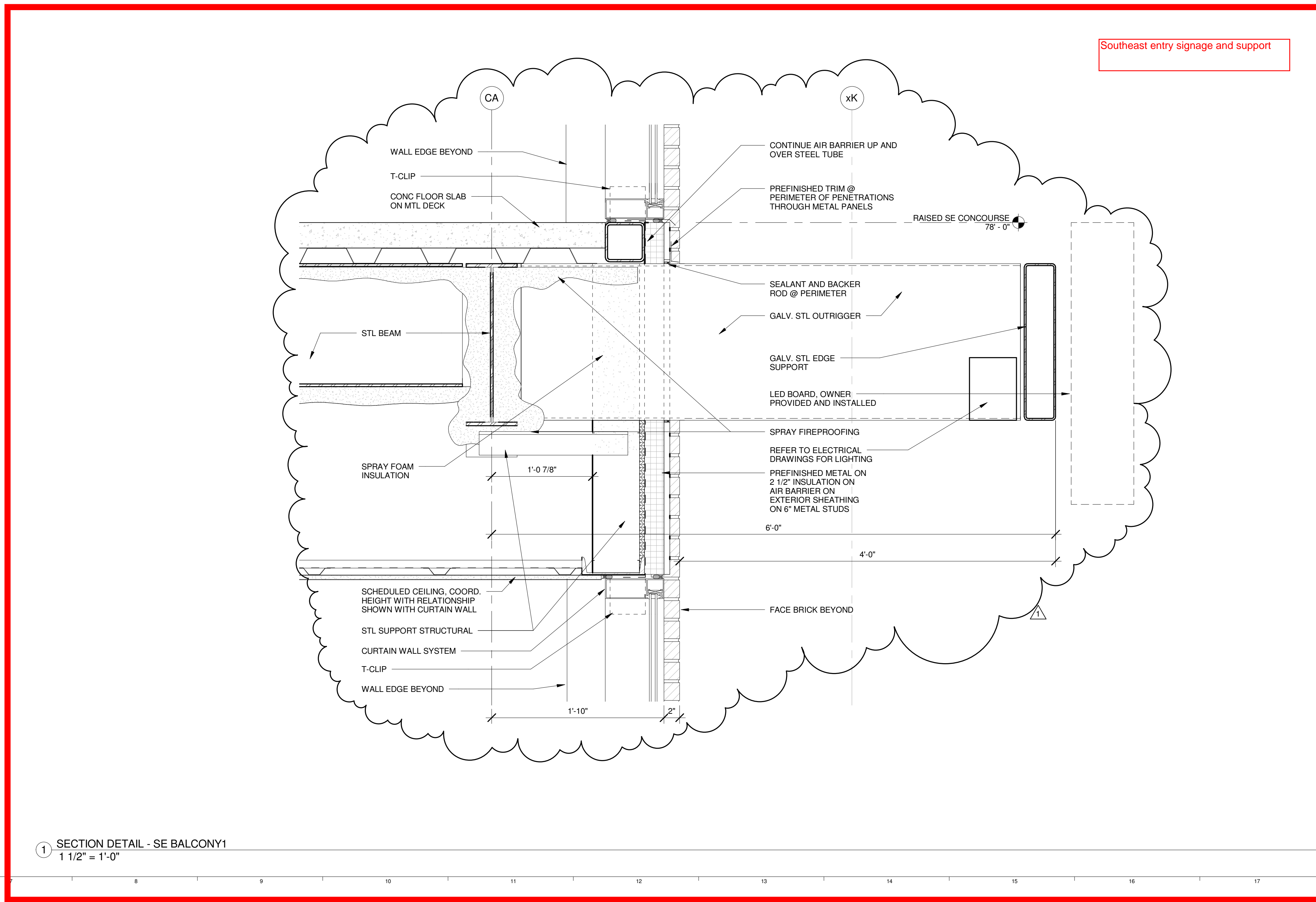
3 SECTION DETAIL - METAL PANEL WALL @ EXISTING CONCRETE BOWL
1 1/2" = 1'-0"



2 SECTION DETAIL - METAL PANEL WALL TO EXISTING CONCRETE SPANDREL BEAM
1 1/2" = 1'-0"



6 Detail 9 - WALL SECTION
1" = 1'-0"



1 SECTION DETAIL - SE BALCONY1
1 1/2" = 1'-0"

| | | |
|-----------------------|------------------------|------------|
| 1 | SI #047 | 02-27-2013 |
| 0 | CONSTRUCTION DOCUMENTS | 01-21-2013 |
| REV. | DESCRIPTION | DATE |
| | SI #047 | |
| | 02-27-2013 | |
| CURRENT ISSUE STATUS: | | |

WBRC
ARCHITECTS • ENGINEERS
WWW.WBRCAL.COM
BANGOR, MAINE 207-947-4511
PORTLAND, MAINE 207-838-4511
SUBAROTA, FLORIDA 904-256-0727

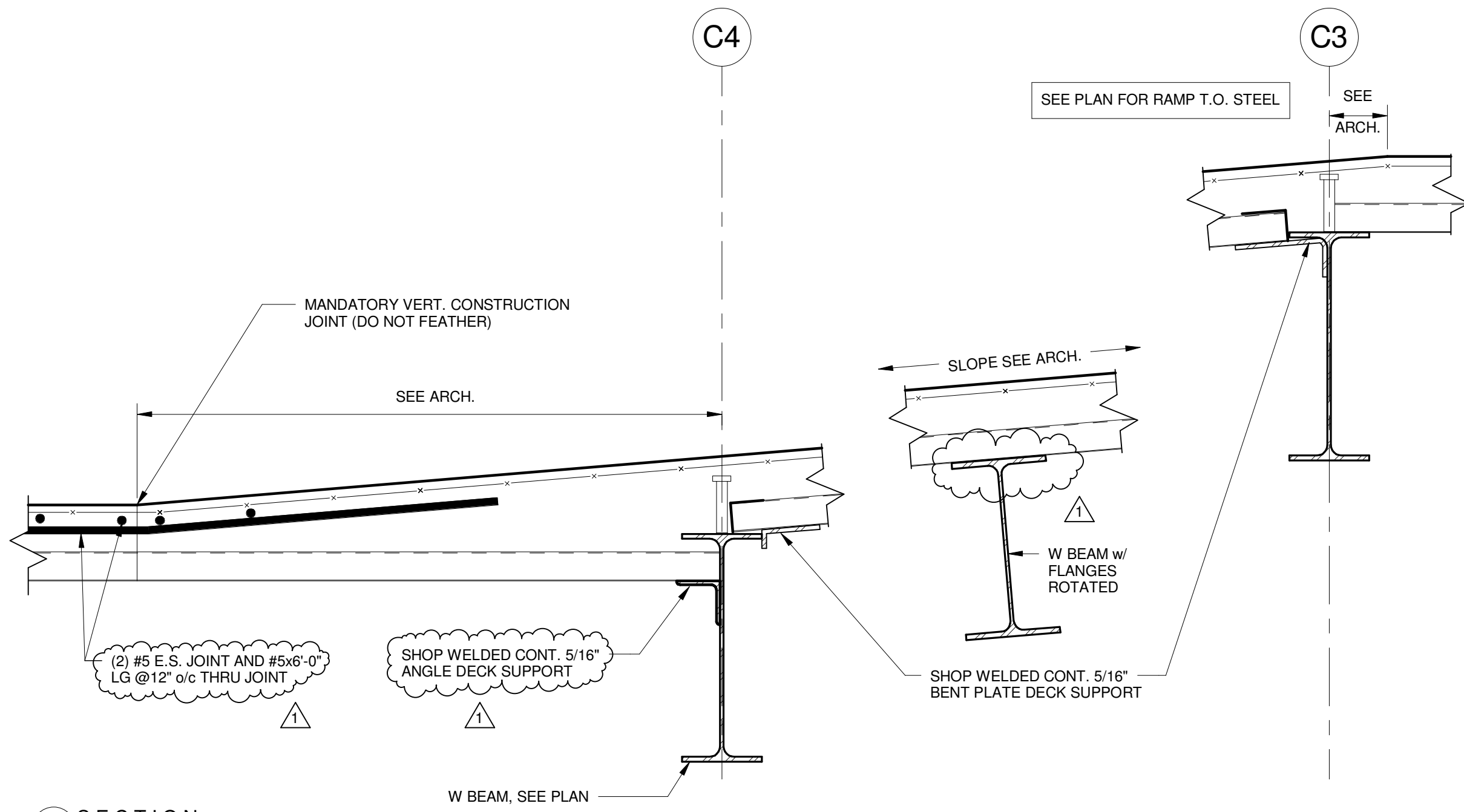
CUMBERLAND COUNTY CIVIC CENTER RENOVATION
PROJECT: PORTLAND, MAINE
SECTION DETAILS

| | |
|---|------------------|
| SHEET TITLE | |
| WBRC CAD FILE: C:\Revit\2013\06 - CCCC Architecture - job.dwg | |
| PROJECT No. 3757.00 | GRAPHIC SCALE 0" |
| SCALE As indicated | 1" |
| PROJECT MANAGER: JRB | SHEET No. |
| DRAWN BY: RAD | A8.32 |
| CHECKED BY: MEJ | |

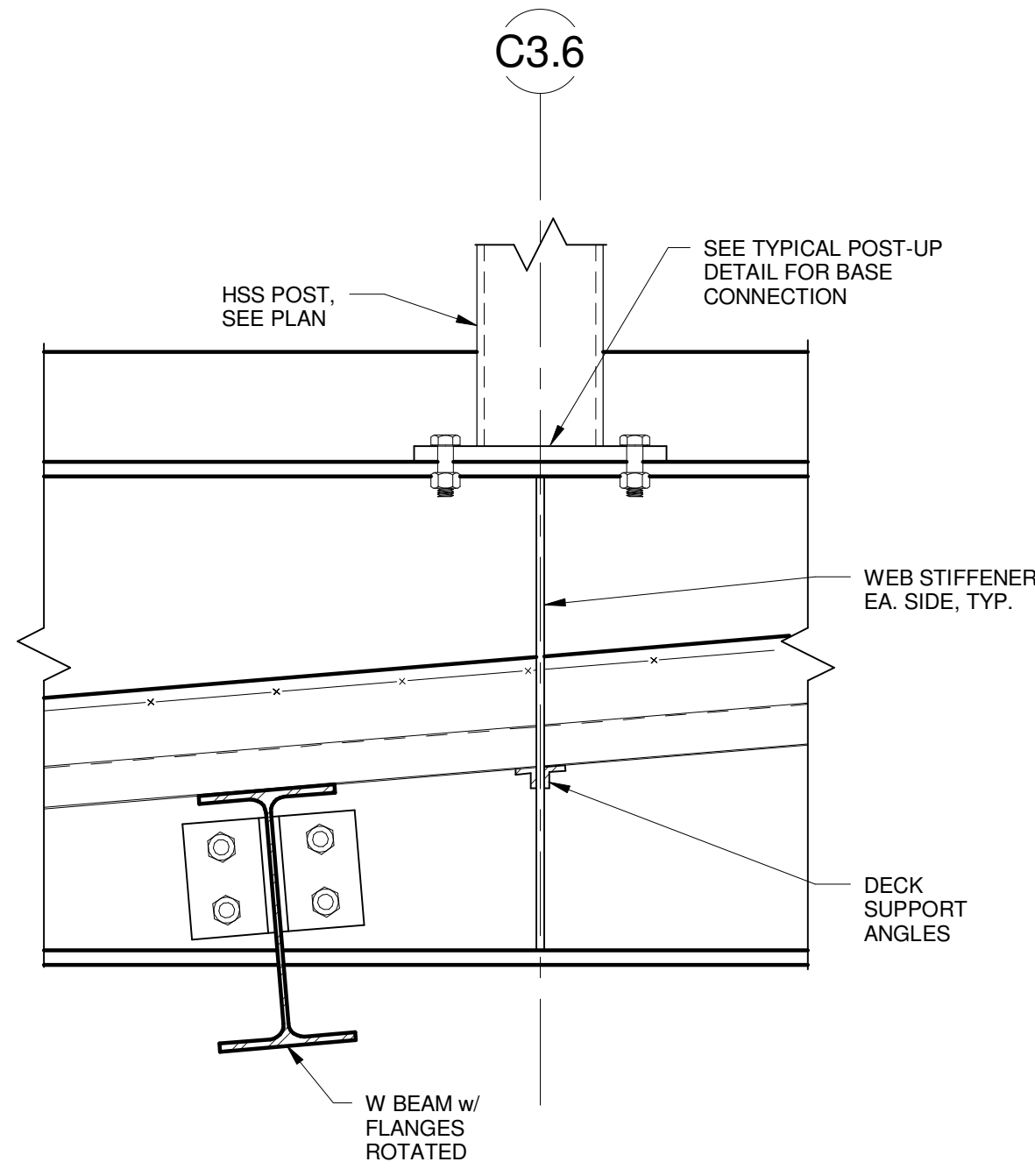
7/11/2013 7:26:57 AM
C:\Revit\2013\06 - CCCC Architecture - job.dwg

SINK COMBS DETHLEFS

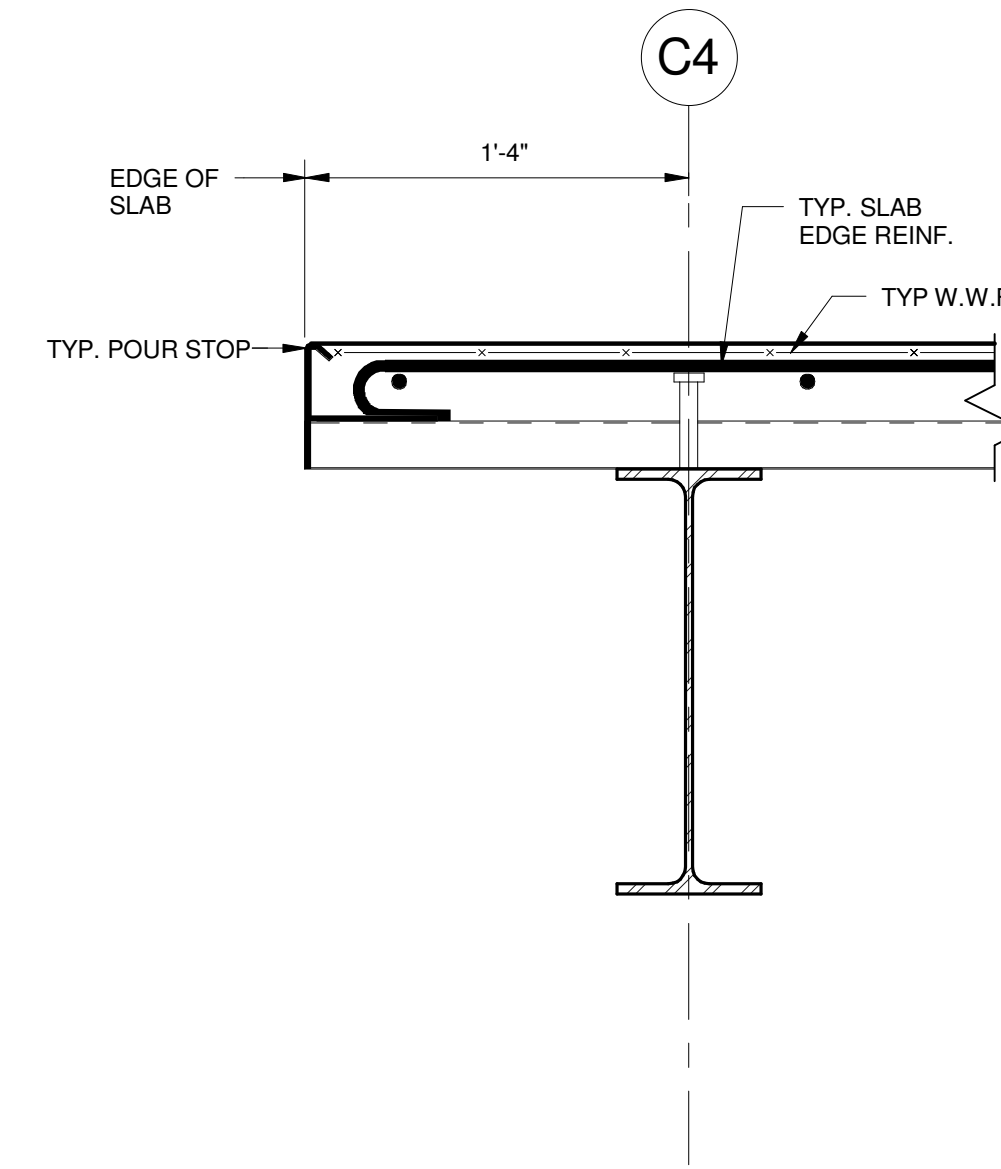
Copyright by
S&B Group
Dethlefs, P.C.
475 Lincoln Street,
Suite 100
Denver, Colorado 80202
303.398.0200
FAX 303.398.0202



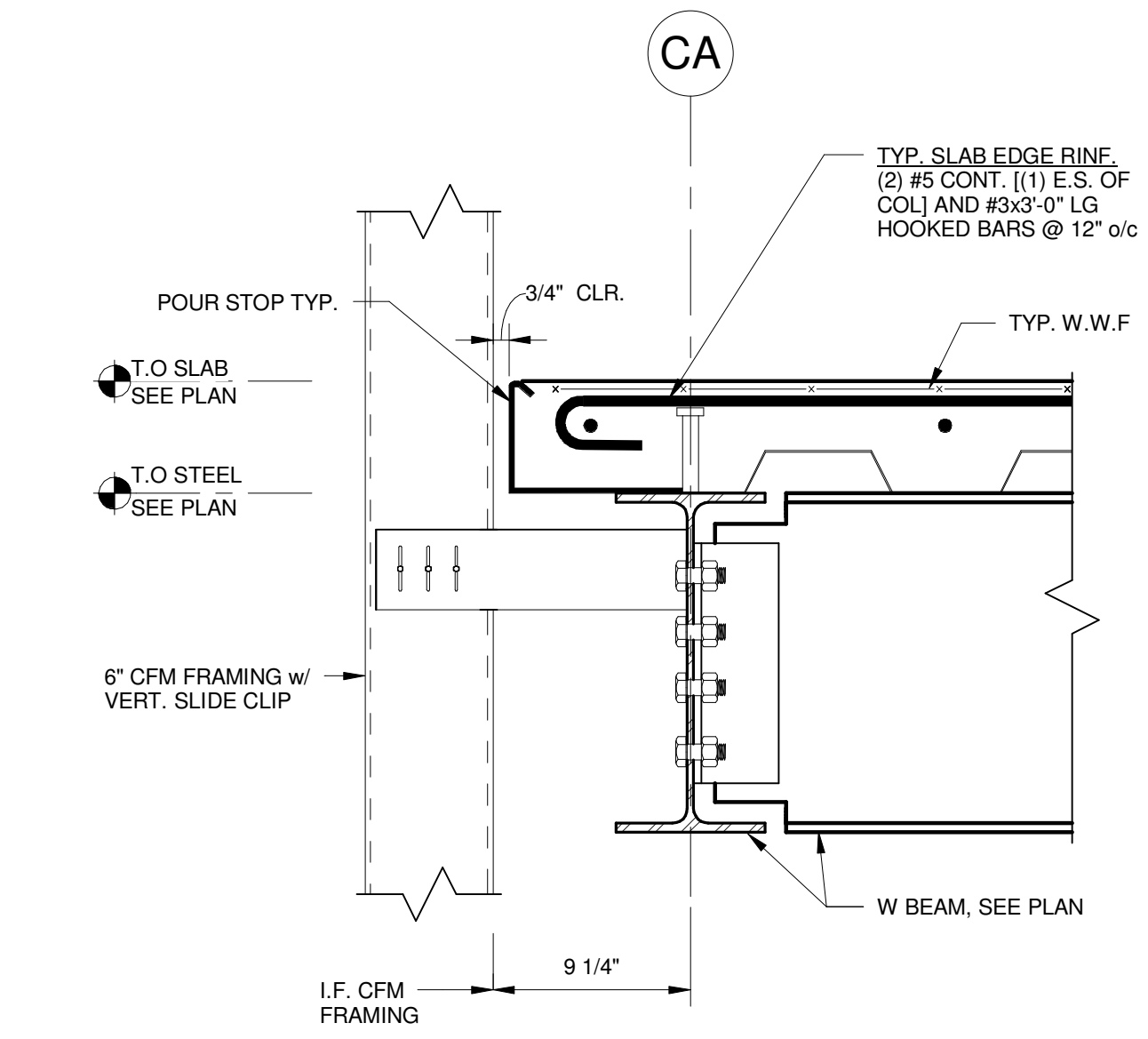
46 SECTION
1 1/2" = 1'-0"



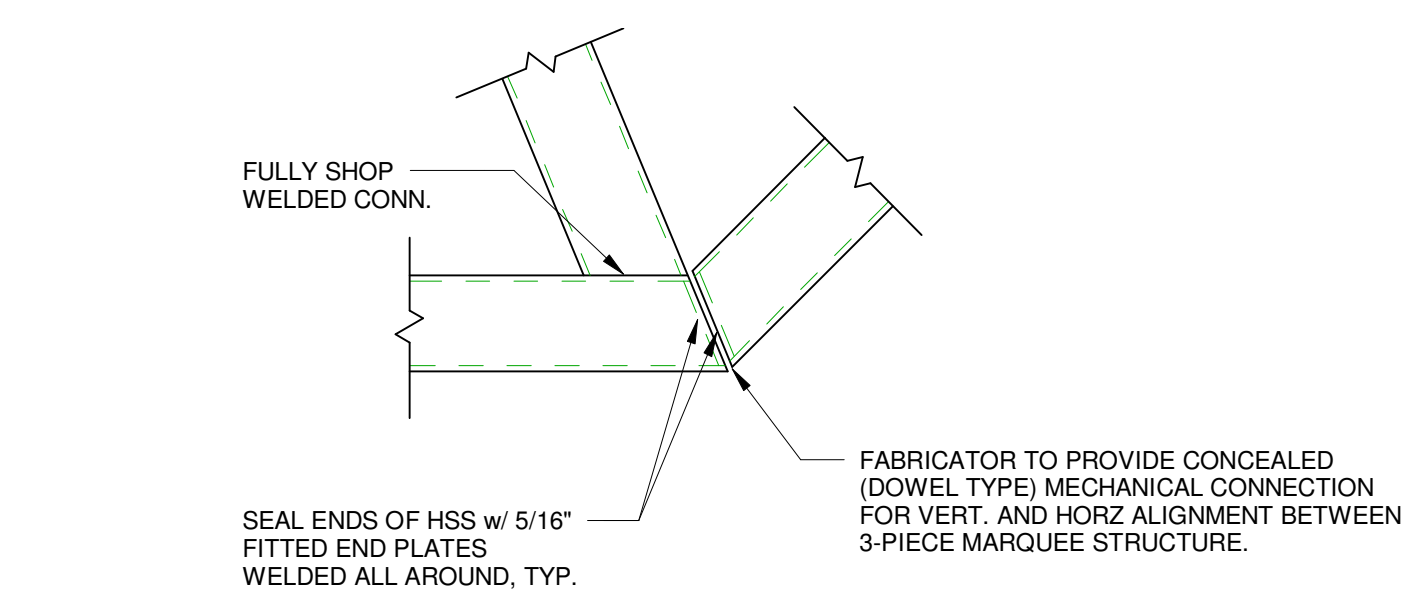
47 SECTION
1 1/2" = 1'-0"



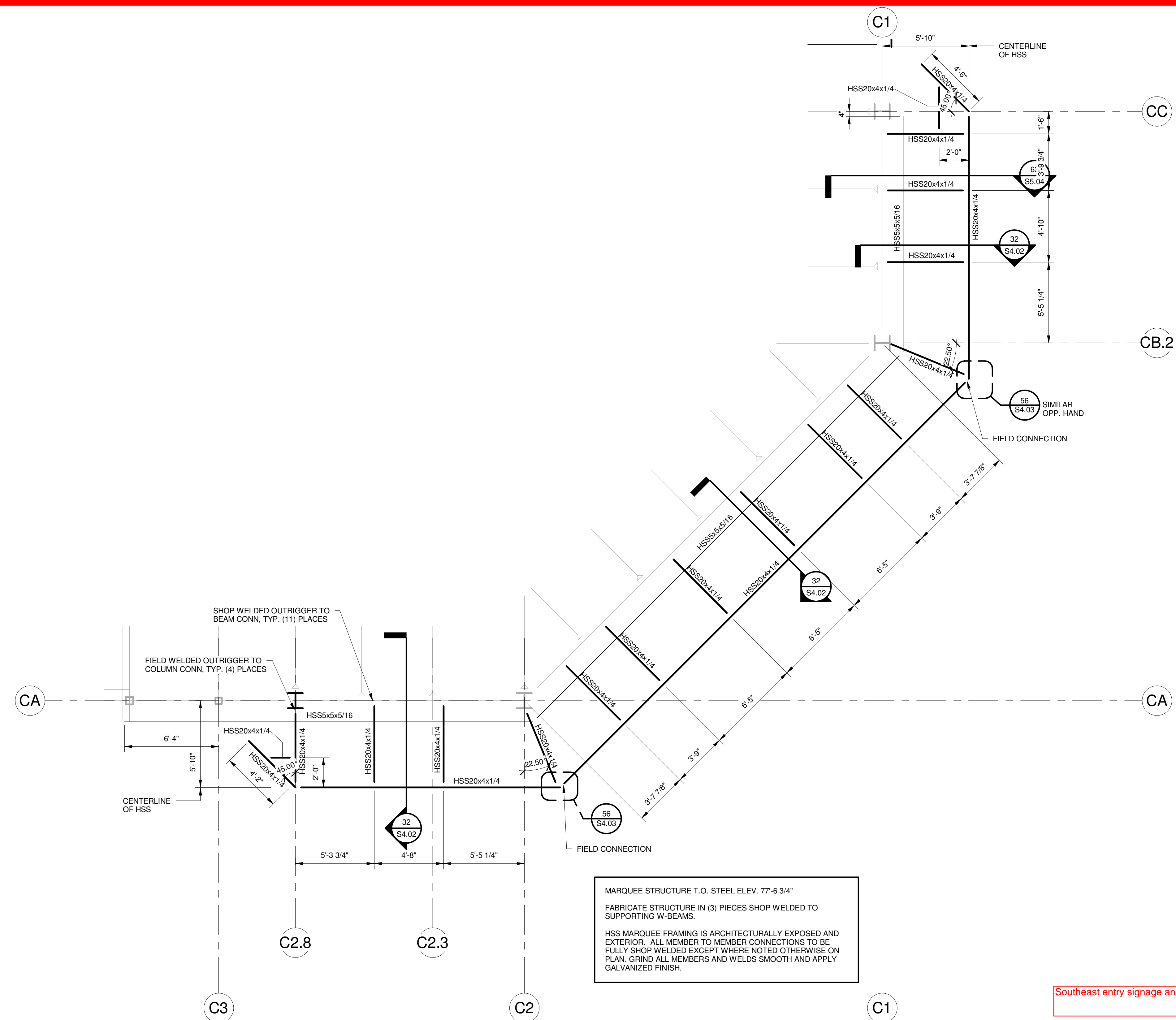
48 SECTION
1 1/2" = 1'-0"



49 SECTION
1 1/2" = 1'-0"

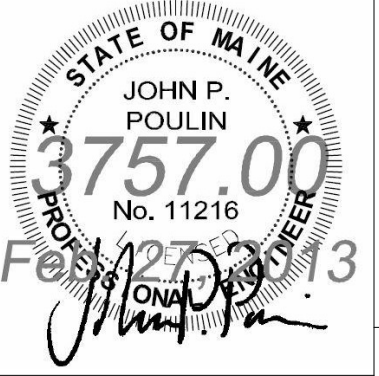


56 MARQUEE CORNER
1 1/2" = 1'-0"



ENLARGED PLAN ADDED
58 SE ENTRY MARQUEE FRAMING PART PLAN
1/4" = 1'-0"

| 2 | SI #047 | 02-27-2013 |
|-----------------------|------------------------|------------|
| 1 | SI #025.1 | 02-08-2013 |
| 0 | CONSTRUCTION DOCUMENTS | 01-21-2013 |
| REV. | DESCRIPTION | DATE |
| | SI #047 | |
| | 02-27-2013 | |
| CURRENT ISSUE STATUS: | | |



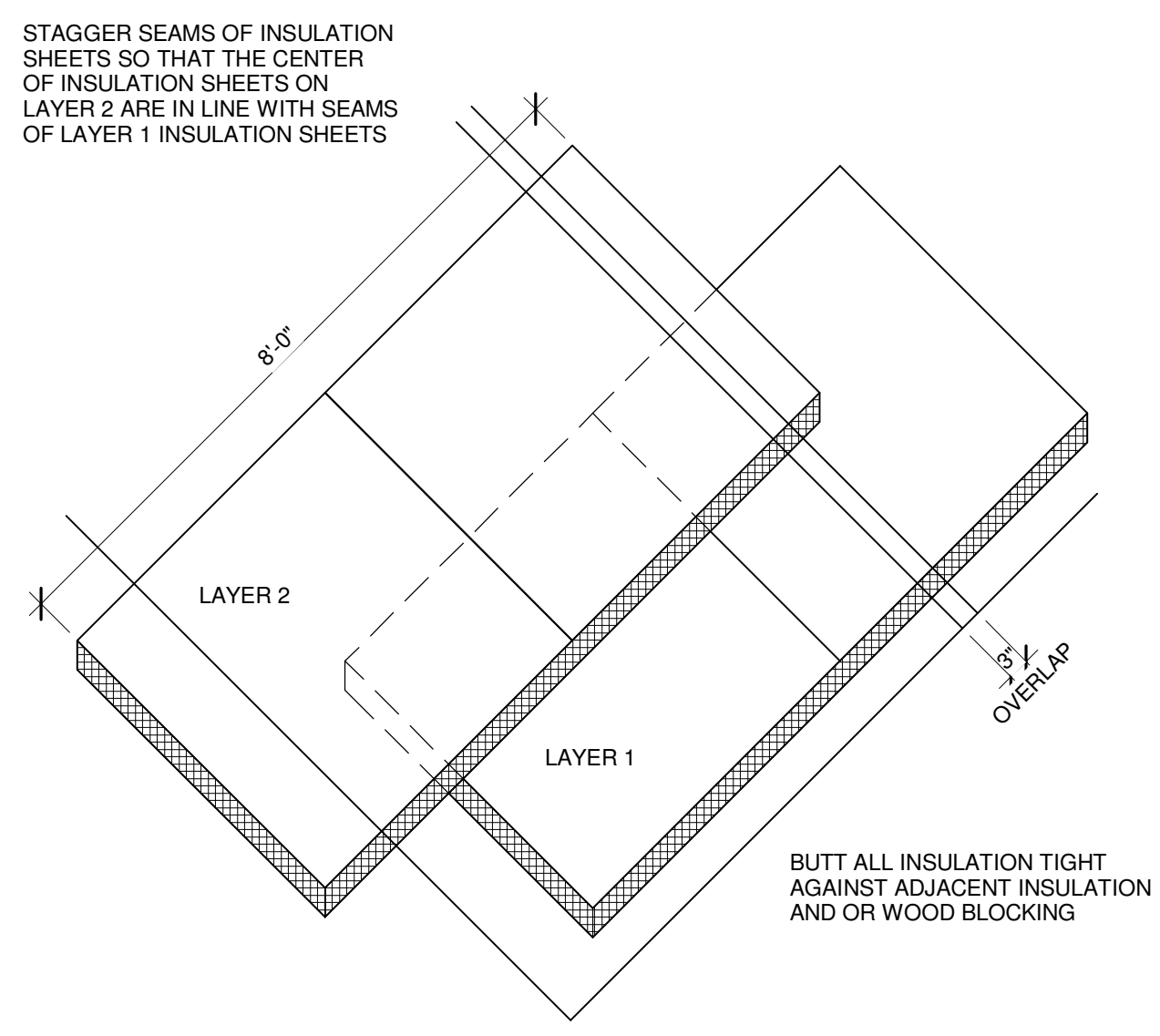
WBRC
ARCHITECTS • ENGINEERS
www.wbrca.com
BANGOR, MAINE 307-947-4511
PORTLAND, MAINE 307-838-4511
SUBAROTA, FLORIDA 351-556-0757

CUMBERLAND COUNTY CIVIC CENTER RENOVATION

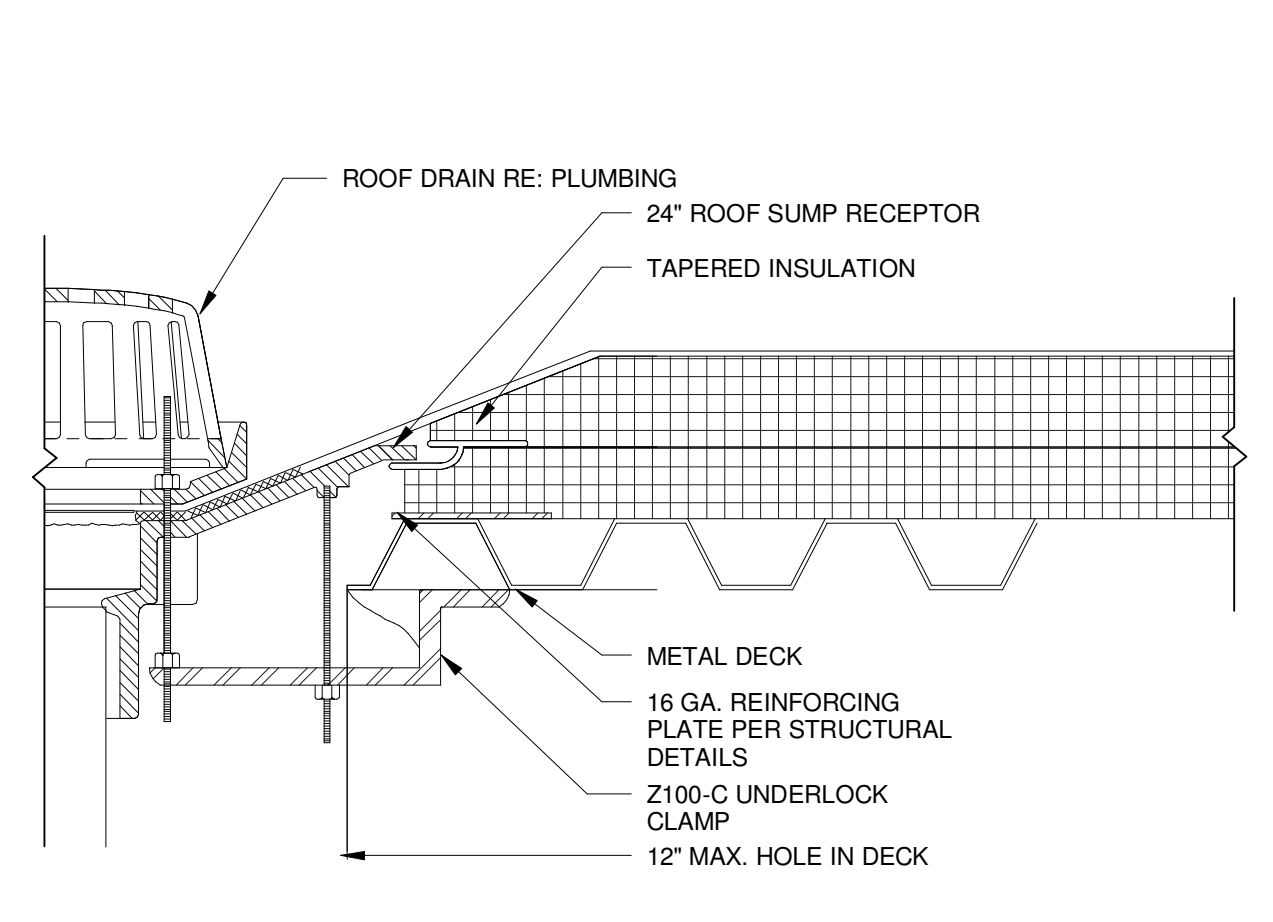
PROJECT: PORTLAND, MAINE
STEEL FLOOR FRAMING SECTIONS AND DETAILS

| | |
|---|------------------------|
| SHEET TITLE | |
| WBRC CAD FILE: C:\Revit\Local\PT06 - CCCC Structure_06a.dwg | |
| PROJECT No. 3757.00 | GRAPHIC SCALE 1" = 10' |
| SCALE: As indicated | |
| PROJECT MANAGER: JRB | SHEET No. |
| DRAWN BY: ADG | S4.03 |
| CHECKED BY: JPP | |

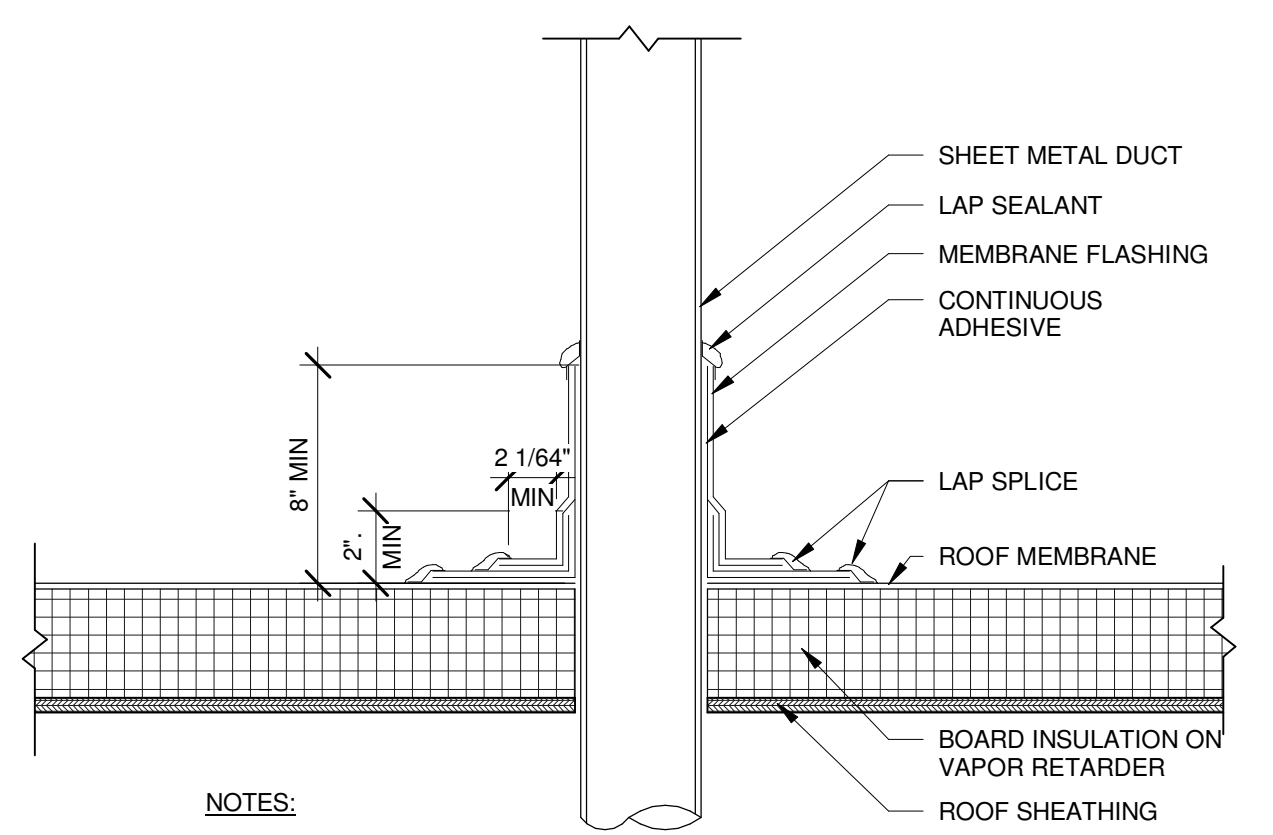
5/15/2013 2:46:38 PM C:\Revit\Local\PT06 - CCCC Structure_06a.dwg



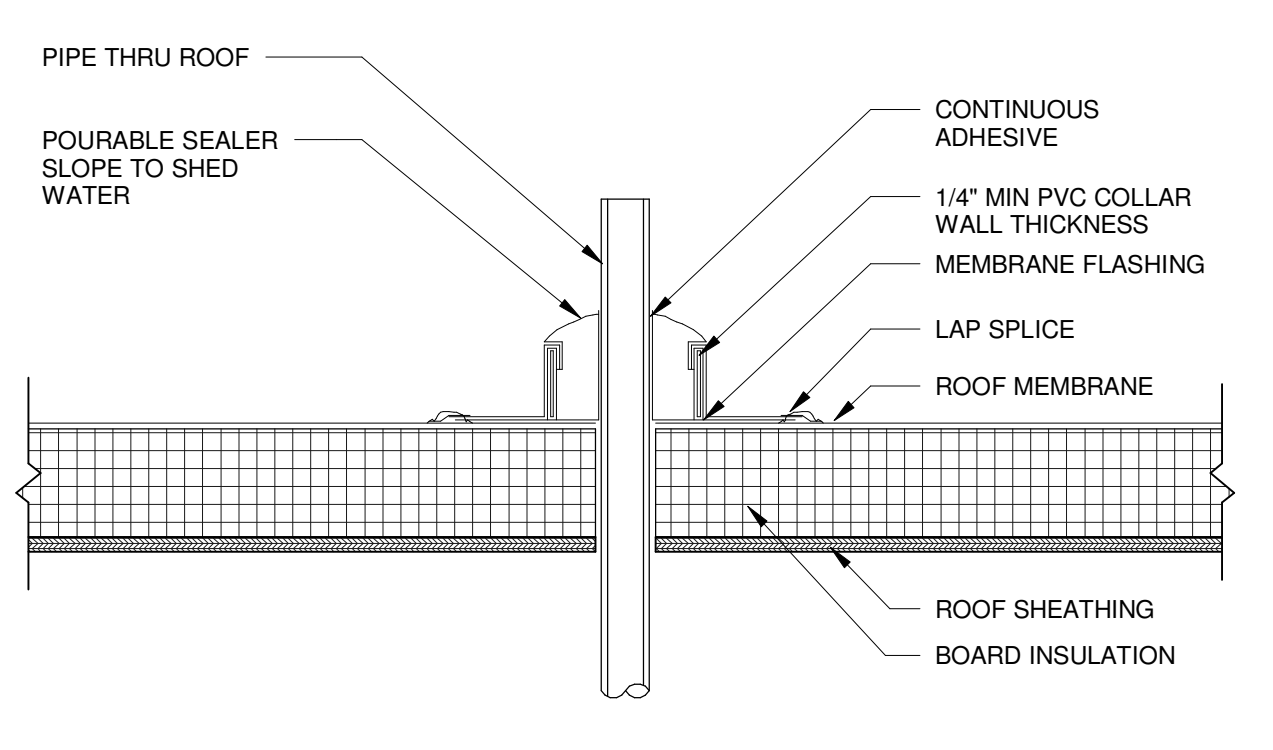
19 STAGGERED ROOF INSULATION
1/2" = 1'-0"



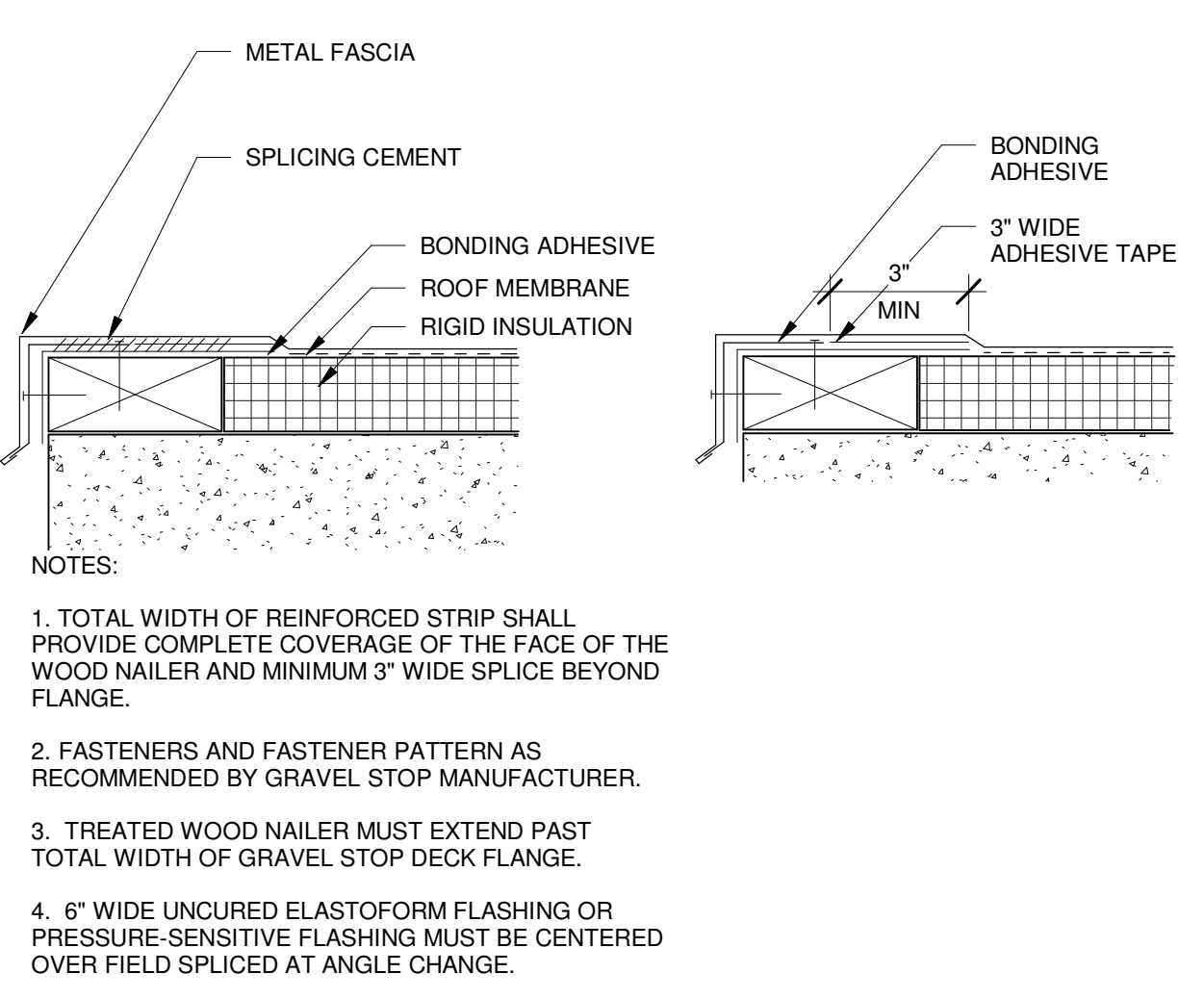
18 ROOF DRAIN
1 1/2" = 1'-0"



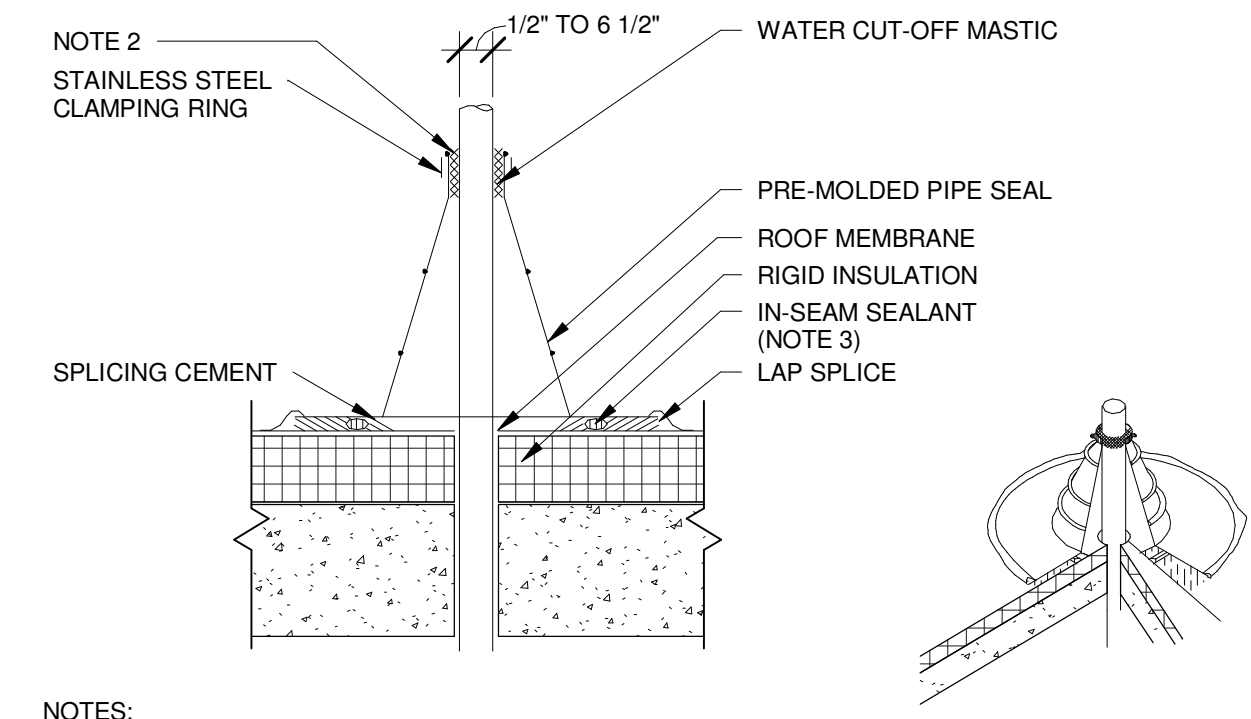
17 DUCT FLASHING DETAIL
1 1/2" = 1'-0"



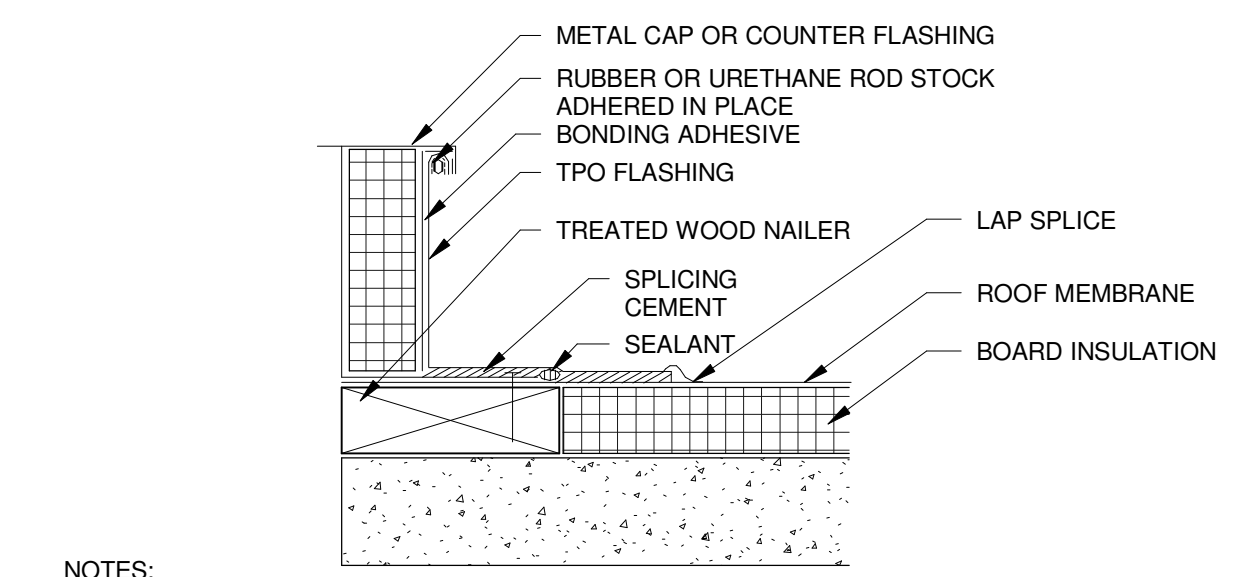
16 ROOF PENETRATION POCKET DETAIL
1 1/2" = 1'-0"



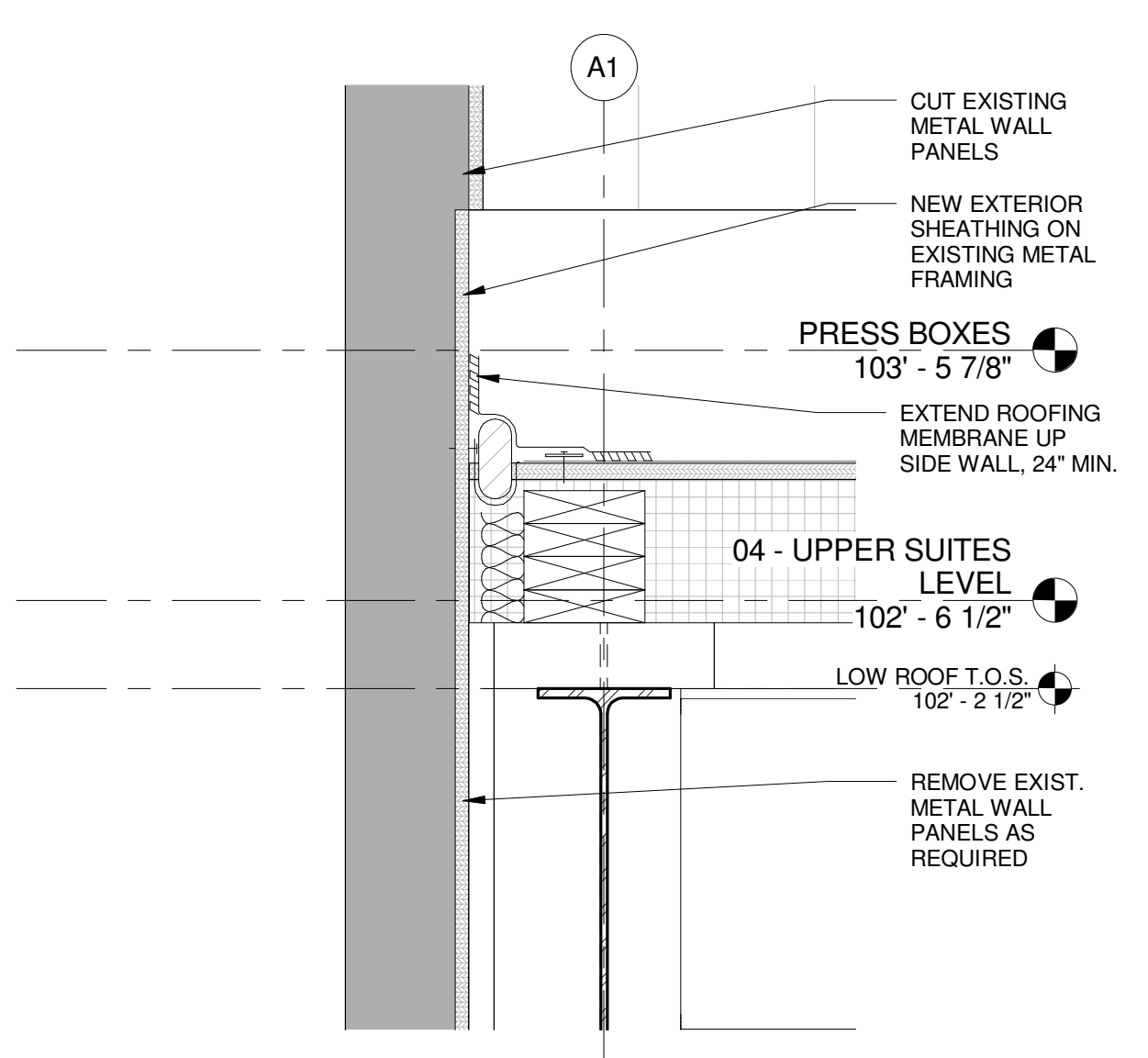
14 METAL EDGE TERMINATION DETAIL
3" = 1'-0"



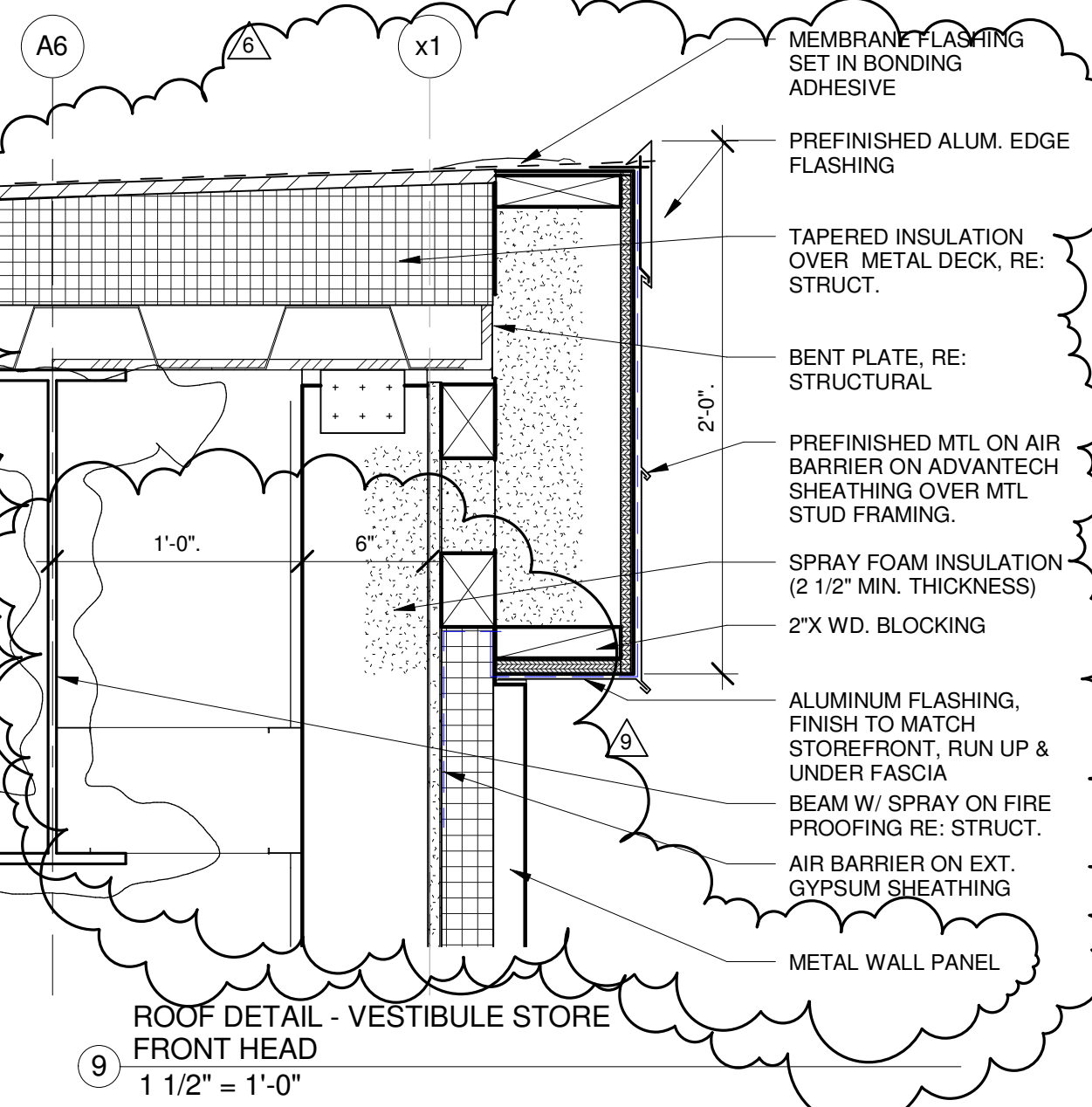
13 PRE MOLDED VENT PIPE FLASHING
3" = 1'-0"



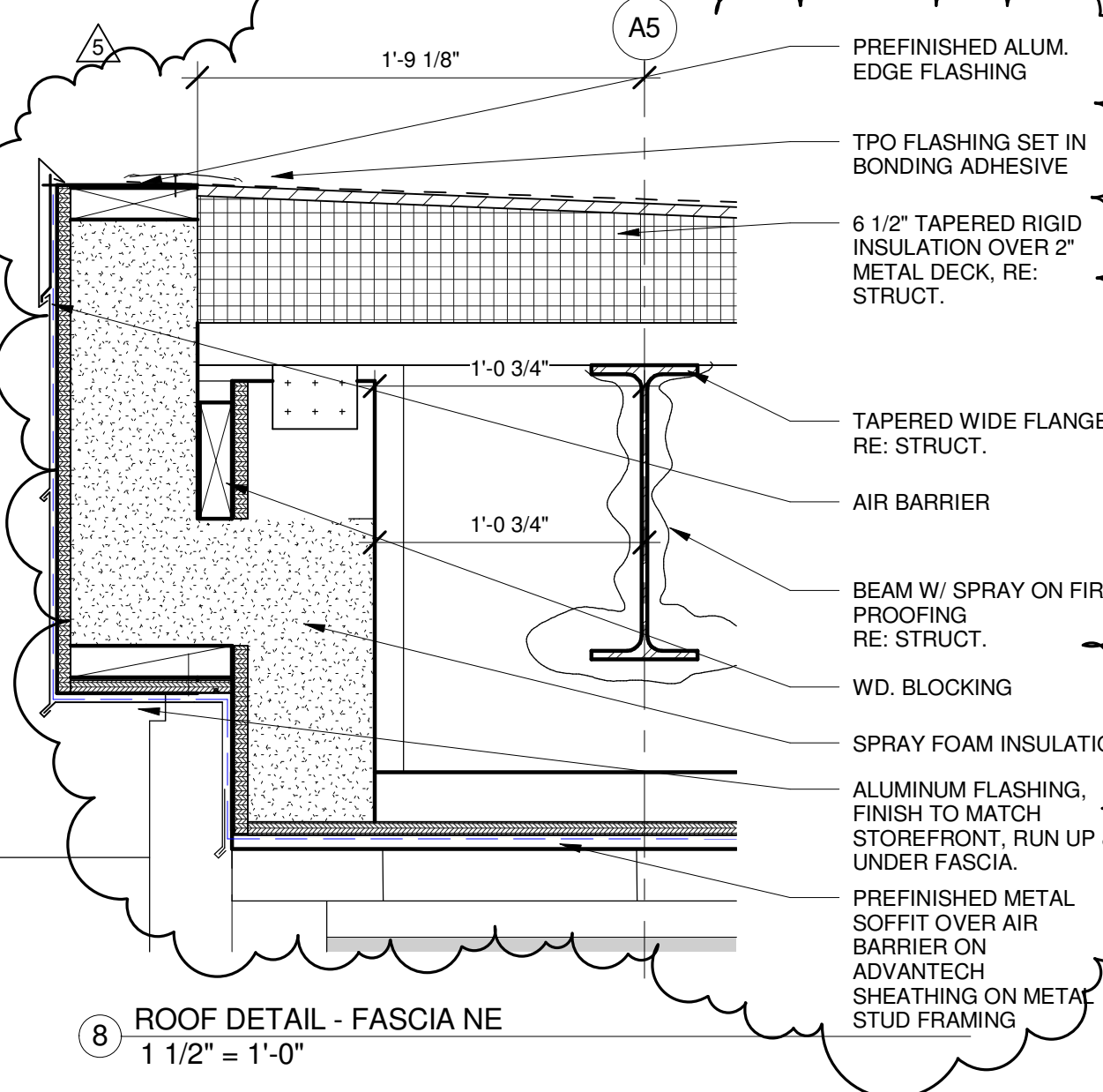
12 SELF FLASHING CURB
3" = 1'-0"



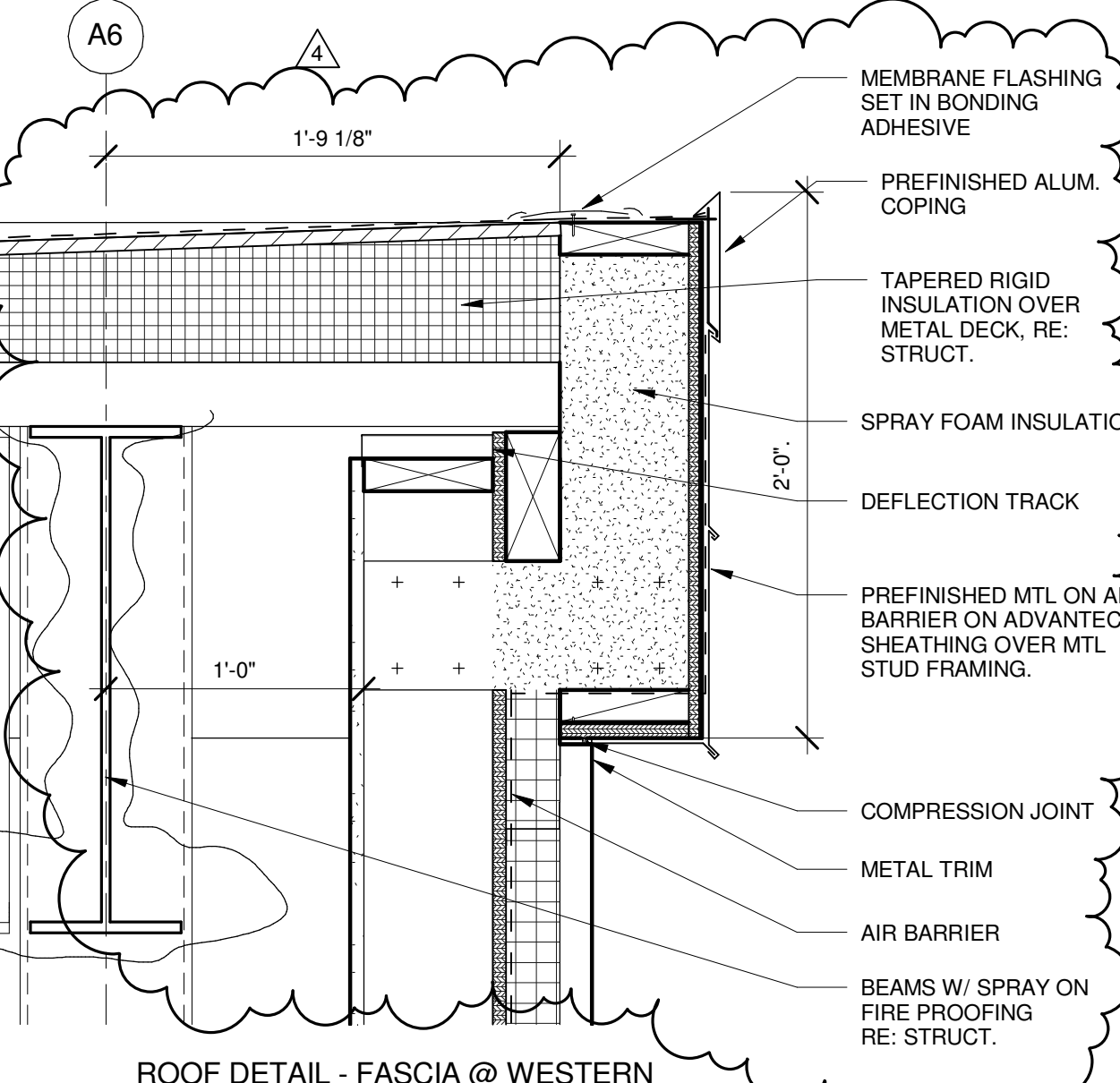
10 ROOF DETAIL - NEW ROOF TO EXISTING WALL PANEL
1 1/2" = 1'-0"



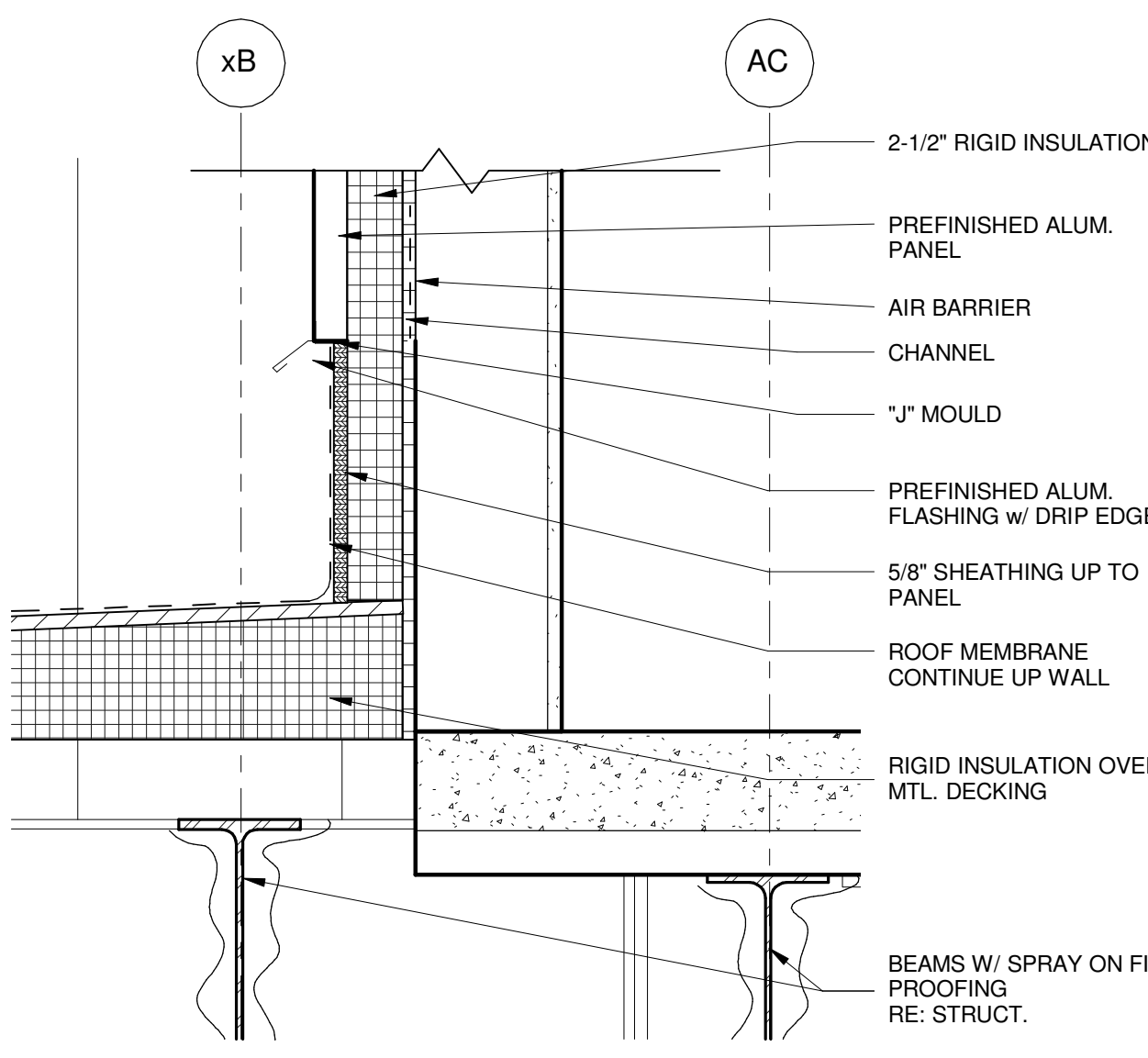
9 ROOF DETAIL - VESTIBULE STORE FRONT HEAD
1 1/2" = 1'-0"



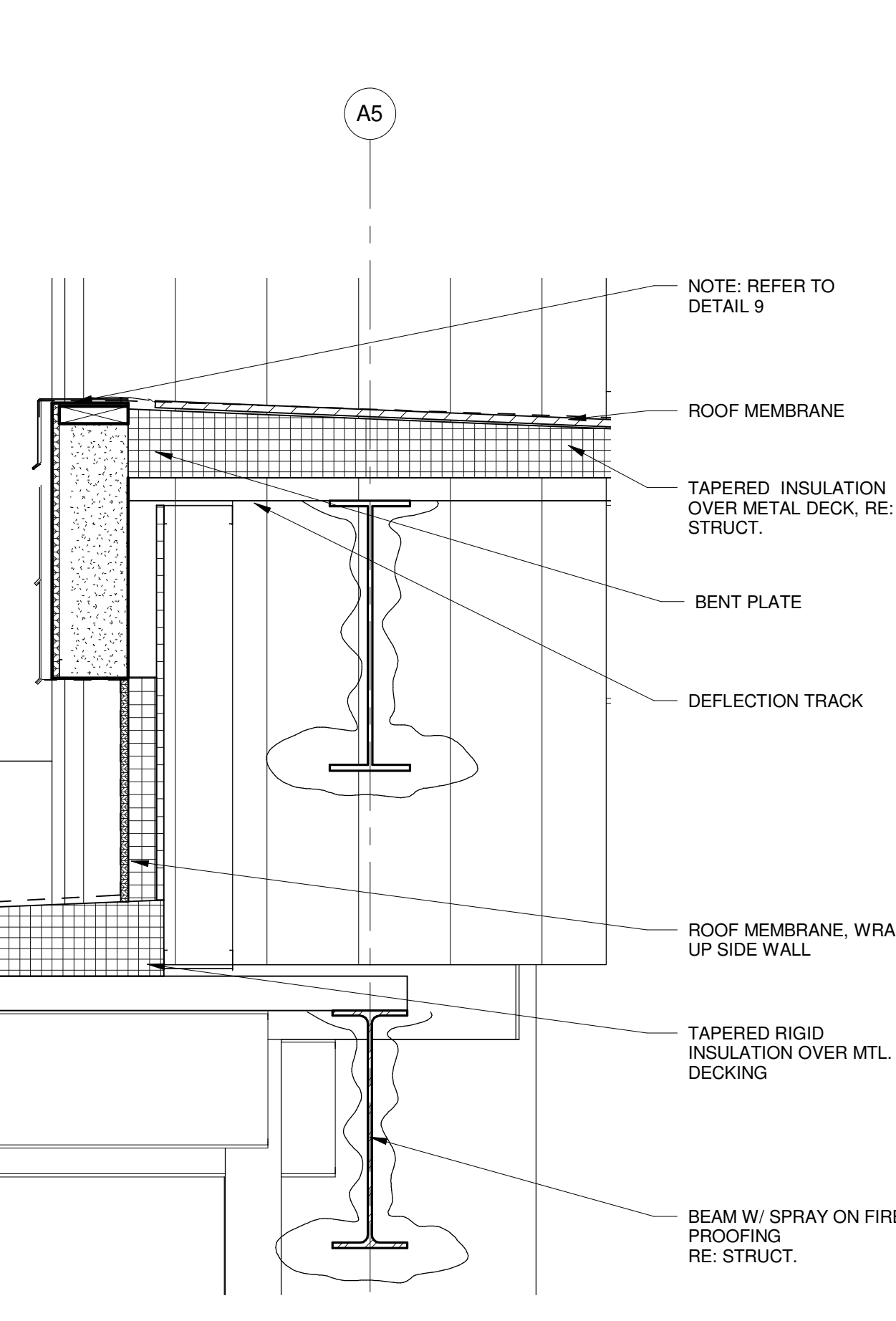
8 ROOF DETAIL - FASCIA NE
1 1/2" = 1'-0"



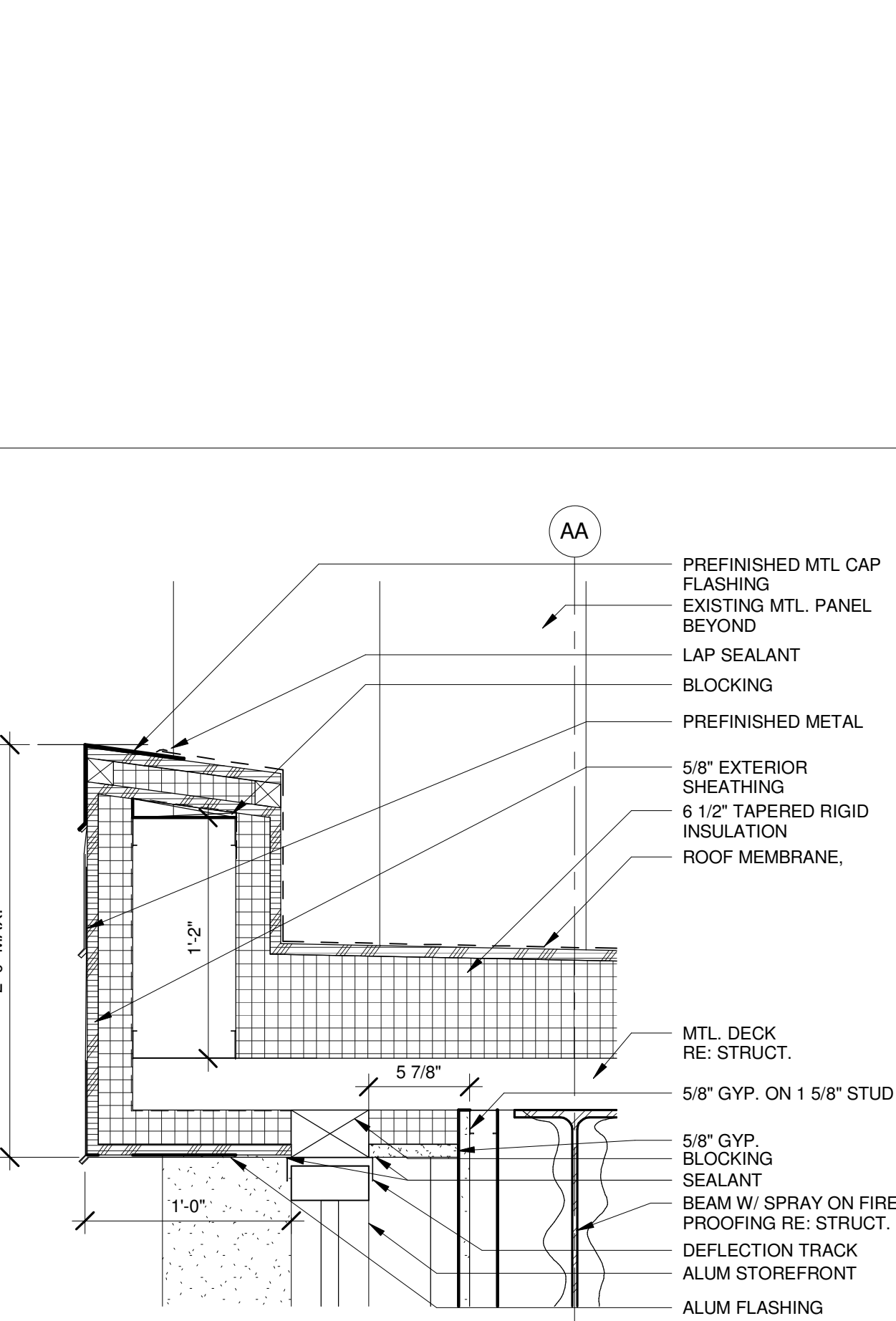
7 ROOF DETAIL - FASCIA @ WESTERN WALL
1 1/2" = 1'-0"



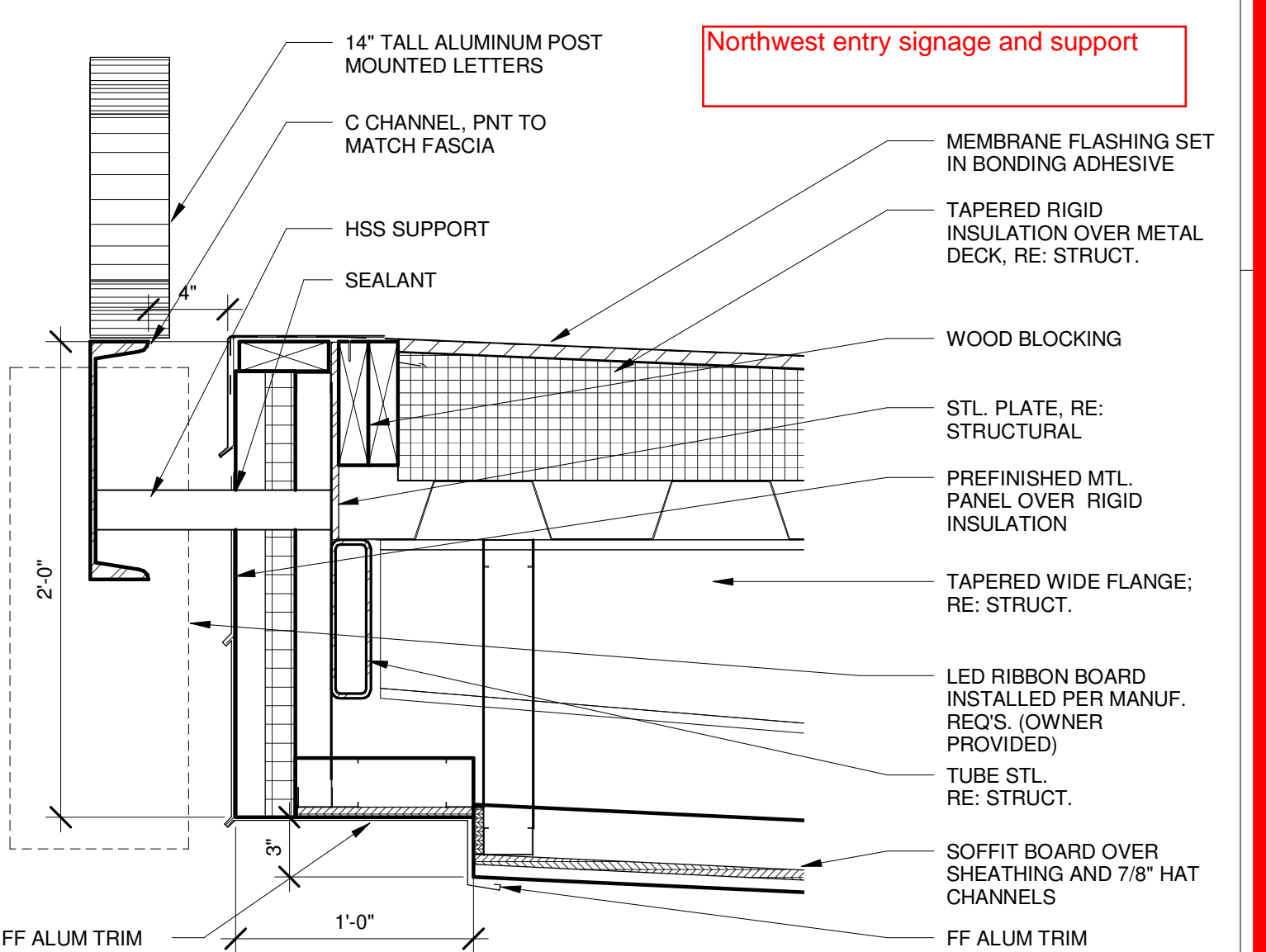
5 ROOF DETAIL - NEW SLAB CONNECTION
1 1/2" = 1'-0"



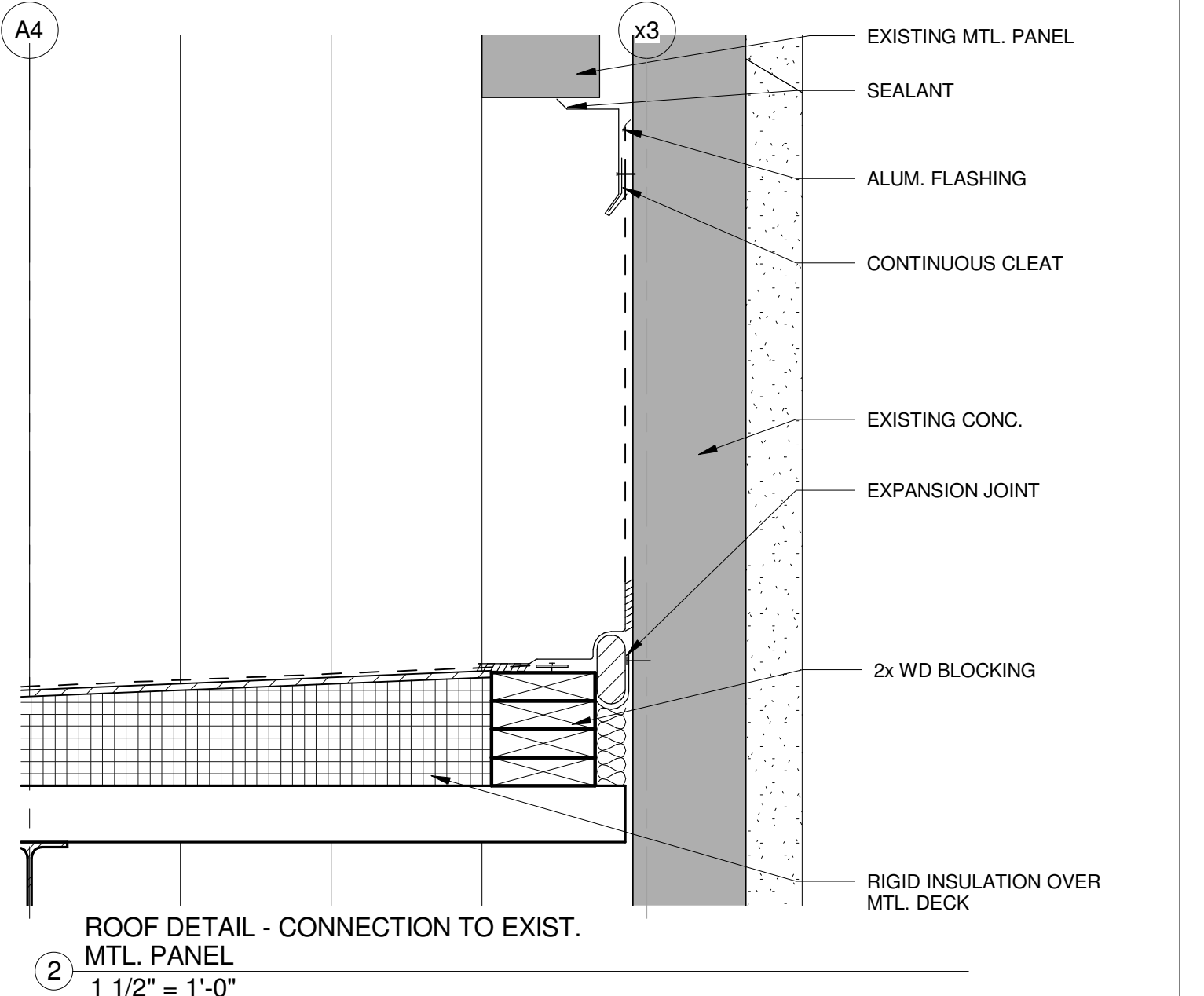
6 ROOF DETAIL - ROOF STEP
1" = 1'-0"



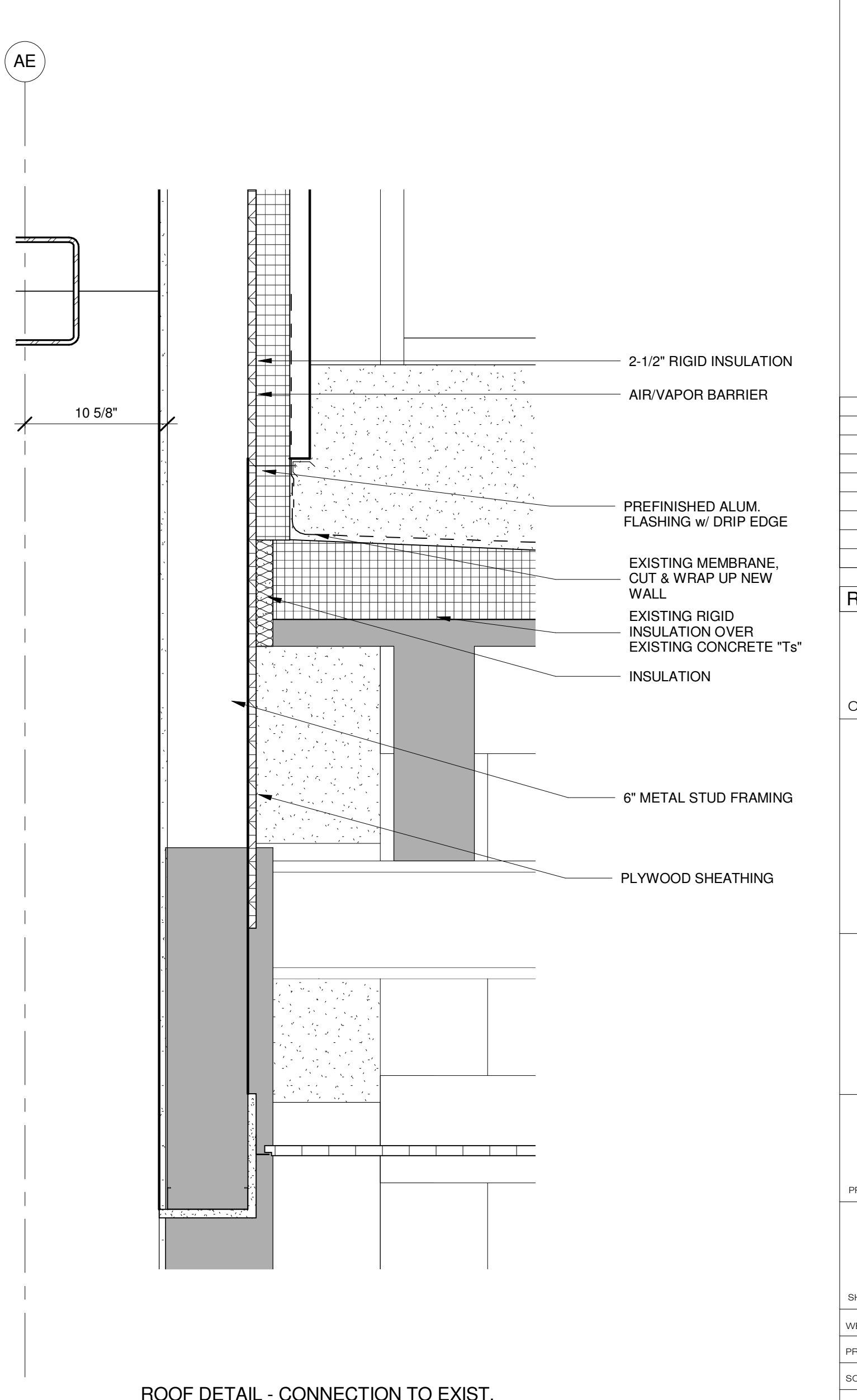
3 ROOF DETAIL - NORTH PARAPET
1 1/2" = 1'-0"



4 ROOF DETAIL - FASCIA @ NORTH CANOPY
1 1/2" = 1'-0"



2 ROOF DETAIL - CONNECTION TO EXIST. MTL. PANEL
1 1/2" = 1'-0"



1 ROOF DETAIL - CONNECTION TO EXIST. T'S
1 1/2" = 1'-0"

| | | |
|---|----------------------------|------------|
| 9 | RFIR #132 | 01-23-2013 |
| 8 | CONSTRUCTION DOCUMENTS | 01-21-2013 |
| 7 | RFIR #110 | 01-03-2013 |
| 6 | RFIR #62 | 11-30-2012 |
| 5 | RFIR #61 | 11-30-2012 |
| 4 | RFIR #60 | 11-30-2012 |
| 3 | RFIR #70 | 11-28-2012 |
| 2 | NW ENTRY CONSTRUCTION DOCS | 10-31-2012 |
| 1 | ADDENDUM #2 (ENTIRE SHEET) | 09-21-2012 |
| 0 | NW ENTRY F.S.E CON. DOCS | 08-23-2012 |

REV. DESCRIPTION DATE
CONSTRUCTION DOCUMENTS

01-21-2013
CURRENT ISSUE STATUS:



CUMBERLAND COUNTY CIVIC CENTER RENOVATION

PROJECT: PORTLAND, MAINE
ROOF DETAILS

| | | | | |
|------------------|----------------|--|----------------|----|
| SHEET TITLE: | WBRC CAD FILE: | C:\New\081710 - CCCA Architecture Job\081710.dwg | GRAPHIC SCALE: | 0" |
| PROJECT No.: | 3757.00 | SCALE: | As indicated | 1" |
| PROJECT MANAGER: | JRB | SHEET No.: | A8.40 | |
| DRAWN BY: | RAJ | CHECKED BY: | MEJ | |

9/26/2013 2:16:36 PM C:\New\081710 - CCCA Architecture Job\081710.dwg