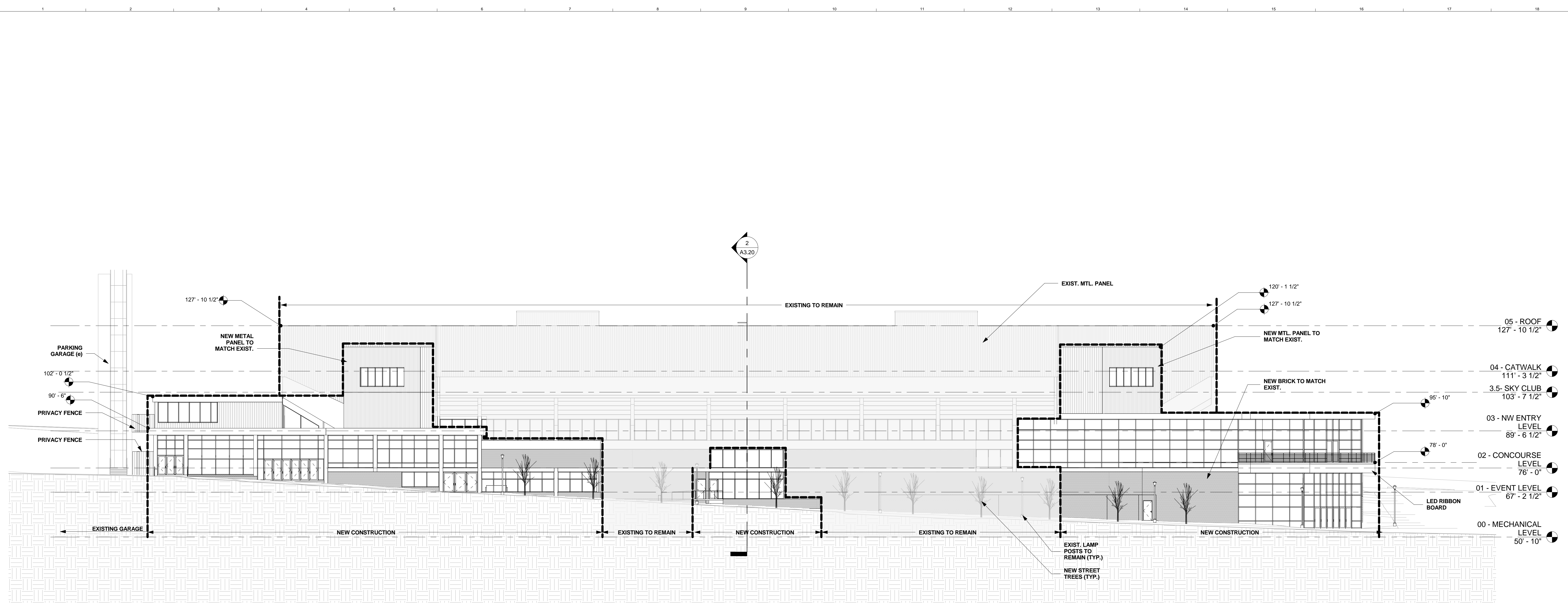
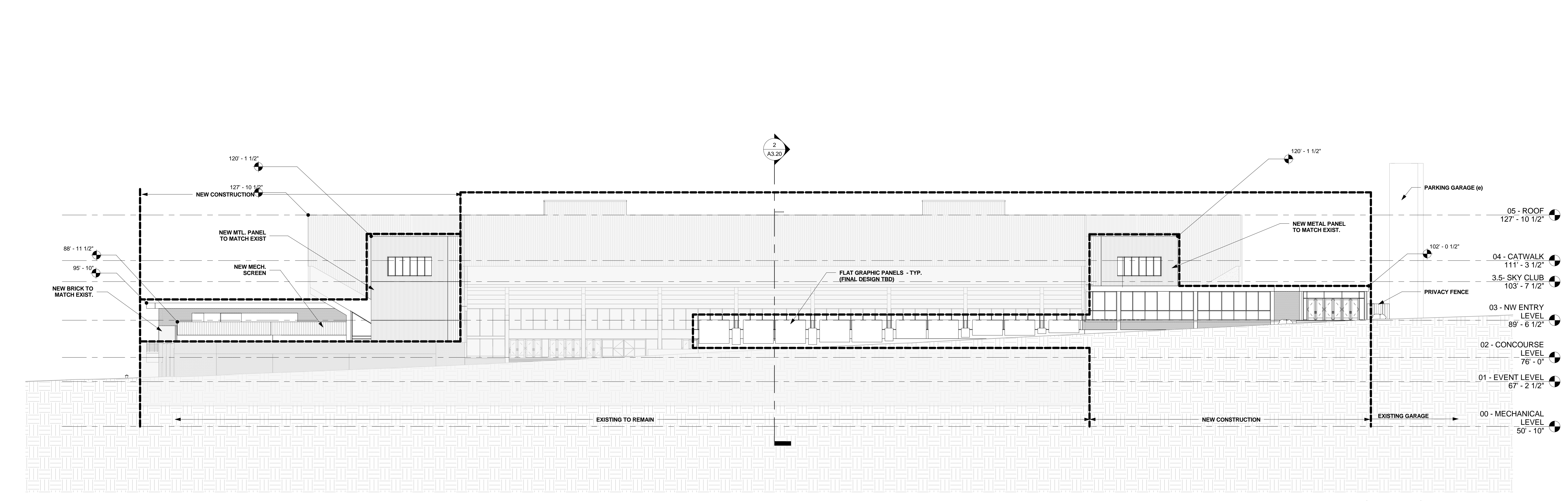


SINK COMBS DETHLEFS

Copyright by Sink Combs Dethlefs, P.C.
 475 Lincoln Street, Suite 100, Denver, Colorado 80203
 303.398.0200
 FAX: 303.398.0222



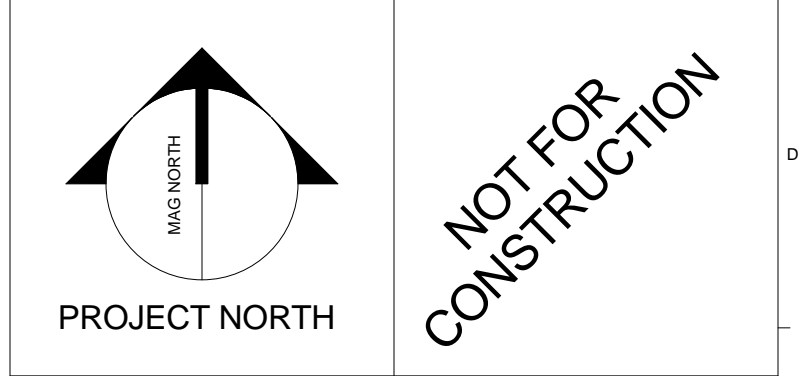
2 SOUTH ELEVATION
 1/16" = 1'-0"



1 NORTH ELEVATION
 1/16" = 1'-0"

A	B
D	C

REV.	DESCRIPTION	DATE
0	SD ADDENDUM #3	
	05/17/2012	



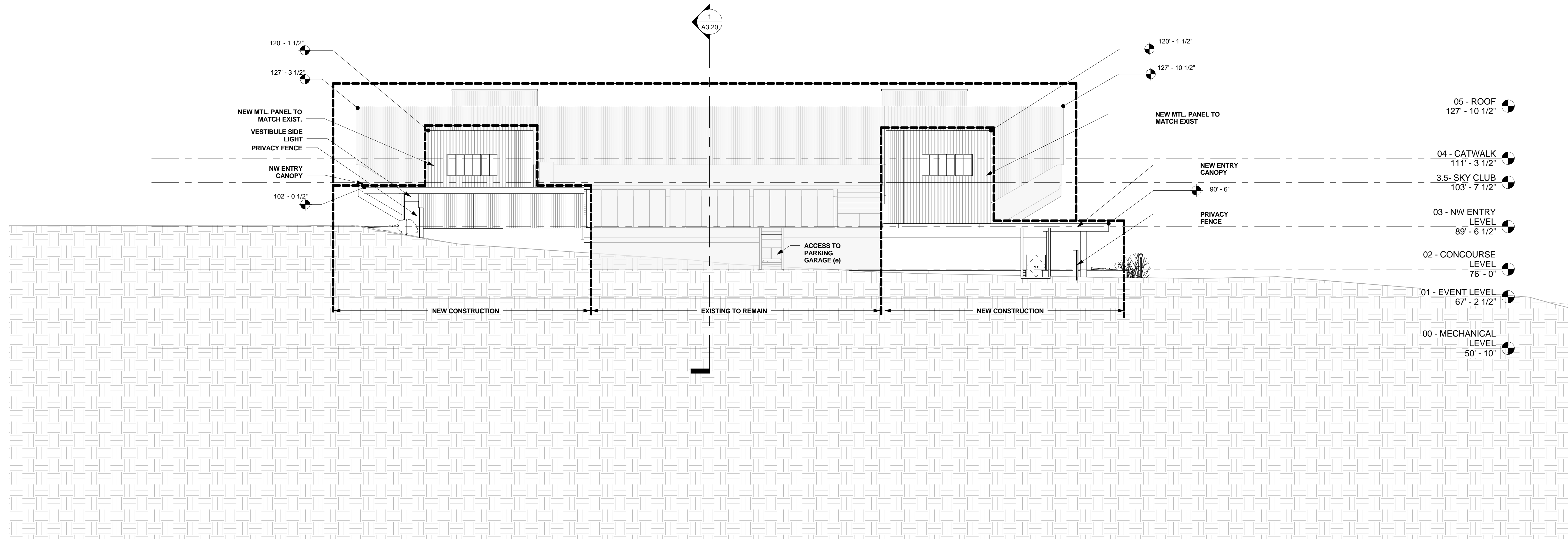
Cumberland County Civic Center
 Portland, ME

ELEVATIONS

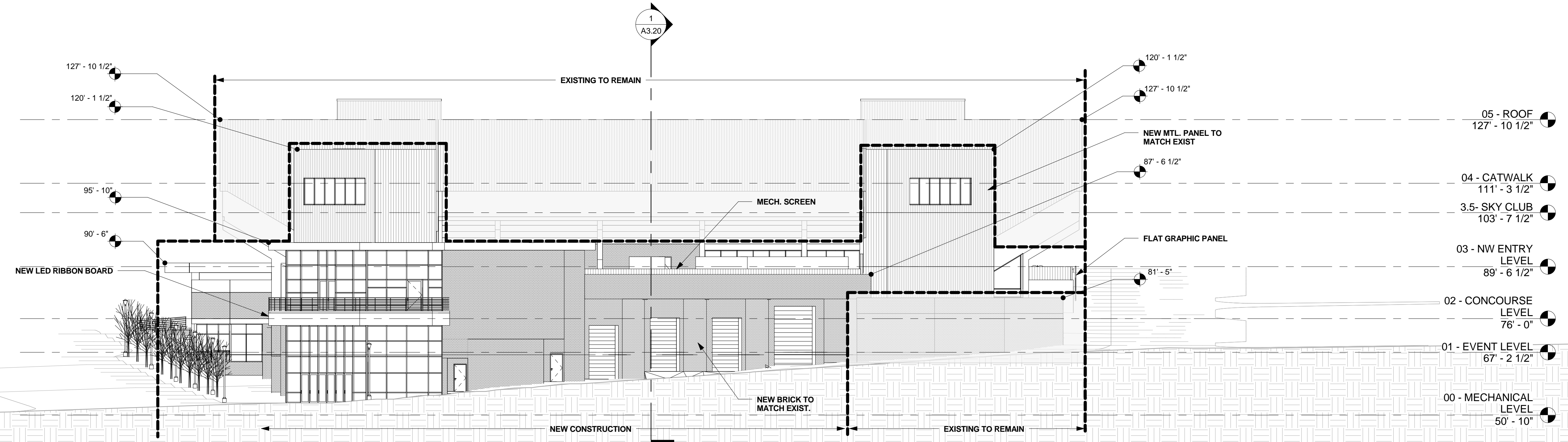
SHEET TITLE	
WBRC CAD FILE: C:\Users\jamesh\Documents\Review\CCCC_Central_jamesh.rvt	
PROJECT No.	01202.00
SCALE	1/16" = 1'-0"
PROJECT MANAGER	Approver
DRAWN BY	Author
CHECKED BY	Checker

SITE 1

5/23/2012 5:38:21 PM
 C:\Users\jamesh\Documents\Review\CCCC_Central_jamesh.rvt



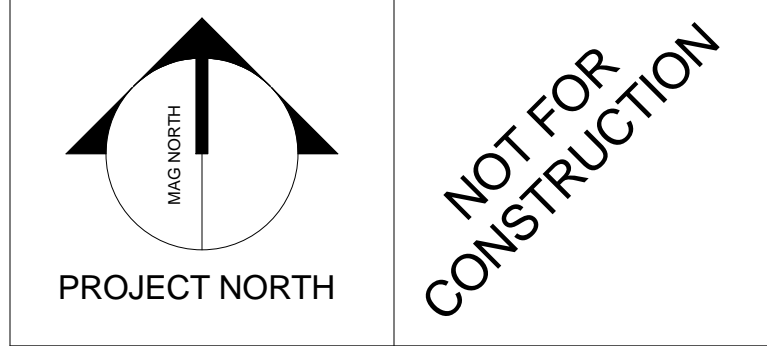
② WEST ELEVATION
1/16" = 1'-0"



① EAST ELEVATION
1/16" = 1'-0"

A	B
D	C

REV.	DESCRIPTION	DATE
0	SD ADDENDUM #3	
	05/17/2012	
CURRENT ISSUE STATUS: 100% SD		



WBRC
ARCHITECTS ENGINEERS
WWW.WBRC-AL.COM
BANGOR, MAINE: 207-847-4511
PORTLAND, MAINE: 207-828-4511
SARASOTA, FLORIDA: 941-556-0752

Cumberland County Civic Center
Portland, ME

ELEVATIONS

SHEET TITLE	
WBRC CAD FILE: C:\Users\jameh\Documents\Revit\CCCC_Central_jameh.rvt	
PROJECT No. 01202.00	GRAPHIC SCALE 1" = 1'-0"
SCALE: 1/16" = 1'-0"	
PROJECT MANAGER: Approver	SHEET No. SITE 2
DRAWN BY: Author	
CHECKED BY: Checker	