

SINK COMBS DETHLEFS

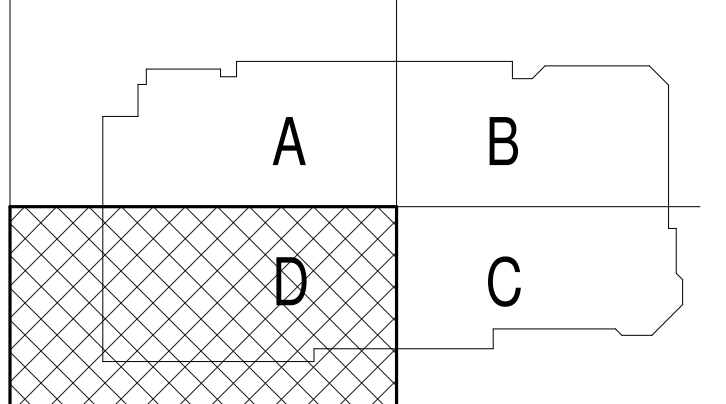
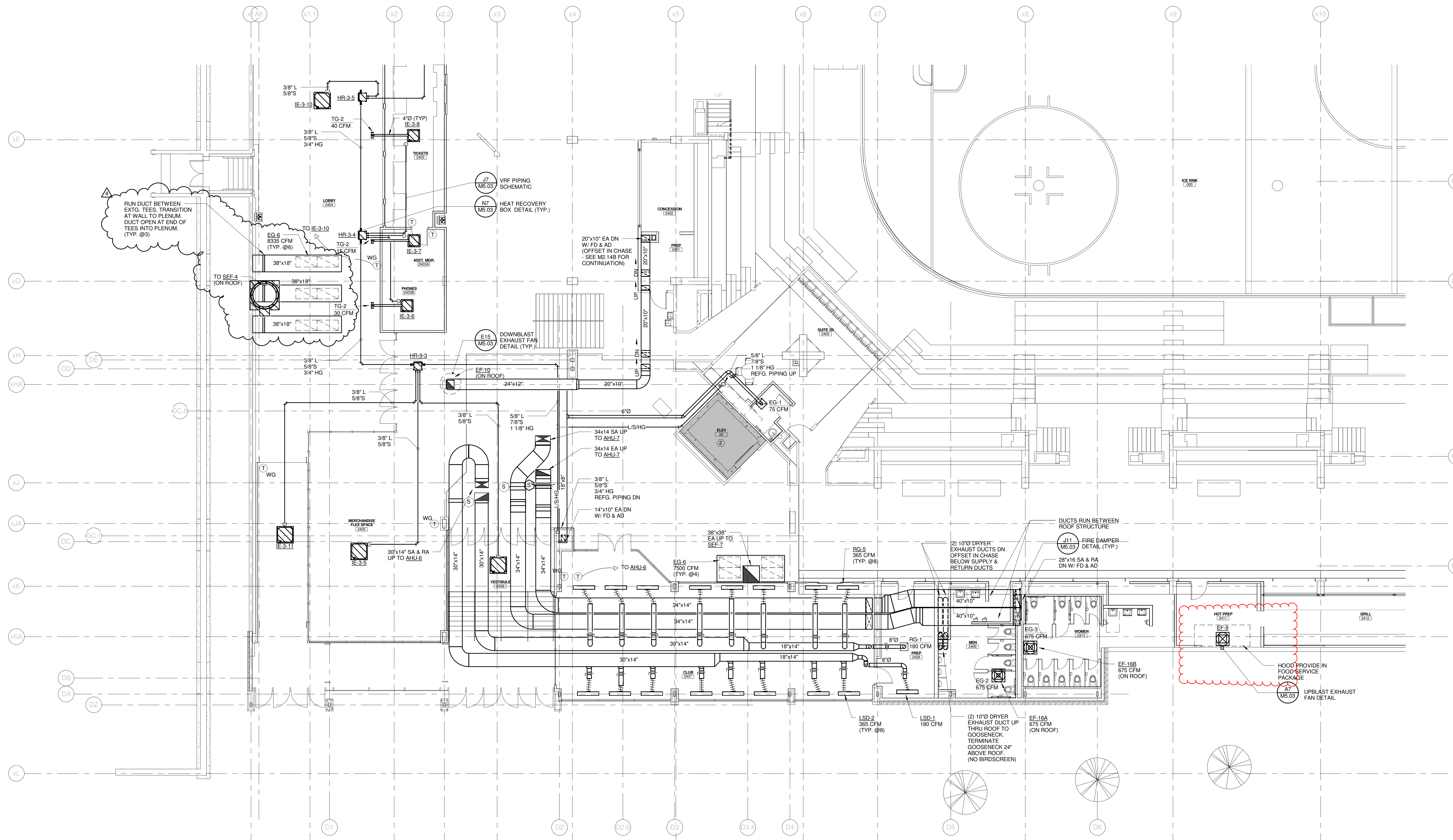
Copyright by Sink Combs Dethlefs, P.C.
 475 Lincoln Street, Suite 100, Denver, Colorado 80202
 303.398.0200
 FAX 303.398.0222

GENERAL NOTES:

1. ALL VRF REFRIGERANT PIPING BRANCHES BETWEEN HEAT RECOVERY BOX & EVAPORATOR SHALL BE 1/4" LIQUID & 1/2" SUCTION UNLESS NOTED OTHERWISE

TECHNICAL NOTES:

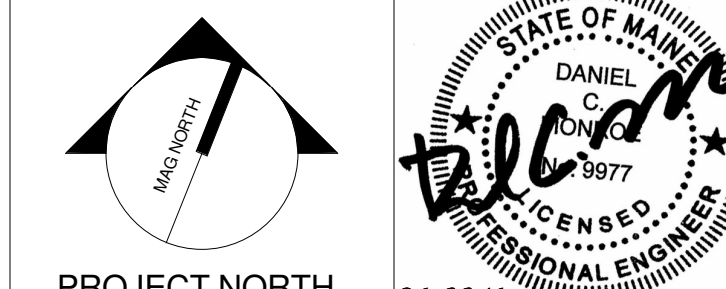
1. SPACE RESERVED FOR ELECTRICAL - NO PIPING OR DUCTWORK PERMITTED
2. ELEVATOR - NO PIPING OR DUCTWORK PERMITTED



REV.	DESCRIPTION	DATE
4	RFIR #321	05-22-2013
3	RFIR #332	05-15-2013
2	RFIR #289	04-26-2013
1	SI #040	02-14-2013
0	CONSTRUCTION DOCUMENTS	01-23-2013

RFIR #321
05-22-2013

CURRENT ISSUE STATUS:



WBRC
 ARCHITECTS • ENGINEERS
 WWW.WBRCAL.COM
 BANGOR, MAINE 307-947-4511
 PORTLAND, MAINE 307-838-4511
 SUWANEE, FLORIDA 351-556-0727

CUMBERLAND COUNTY CIVIC CENTER RENOVATION

PROJECT: PORTLAND, ME
CONOURSE LEVEL
MECHANICAL PLAN - QUAD D

SHEET TITLE	WBRC CAD FILE: 375700 - 0002 Mechanical.dwg
PROJECT No.	3757.00
SCALE	1/8" = 1'-0"
PROJECT MANAGER	JRB
DRAWN BY	COB
CHECKED BY	DMON
SHEET No.	M2.24B

5/22/2013 9:26:26 AM
 C:\Users\conroy\builder\Documents\375700 - 0002 Mechanical_Courtesy.dwg