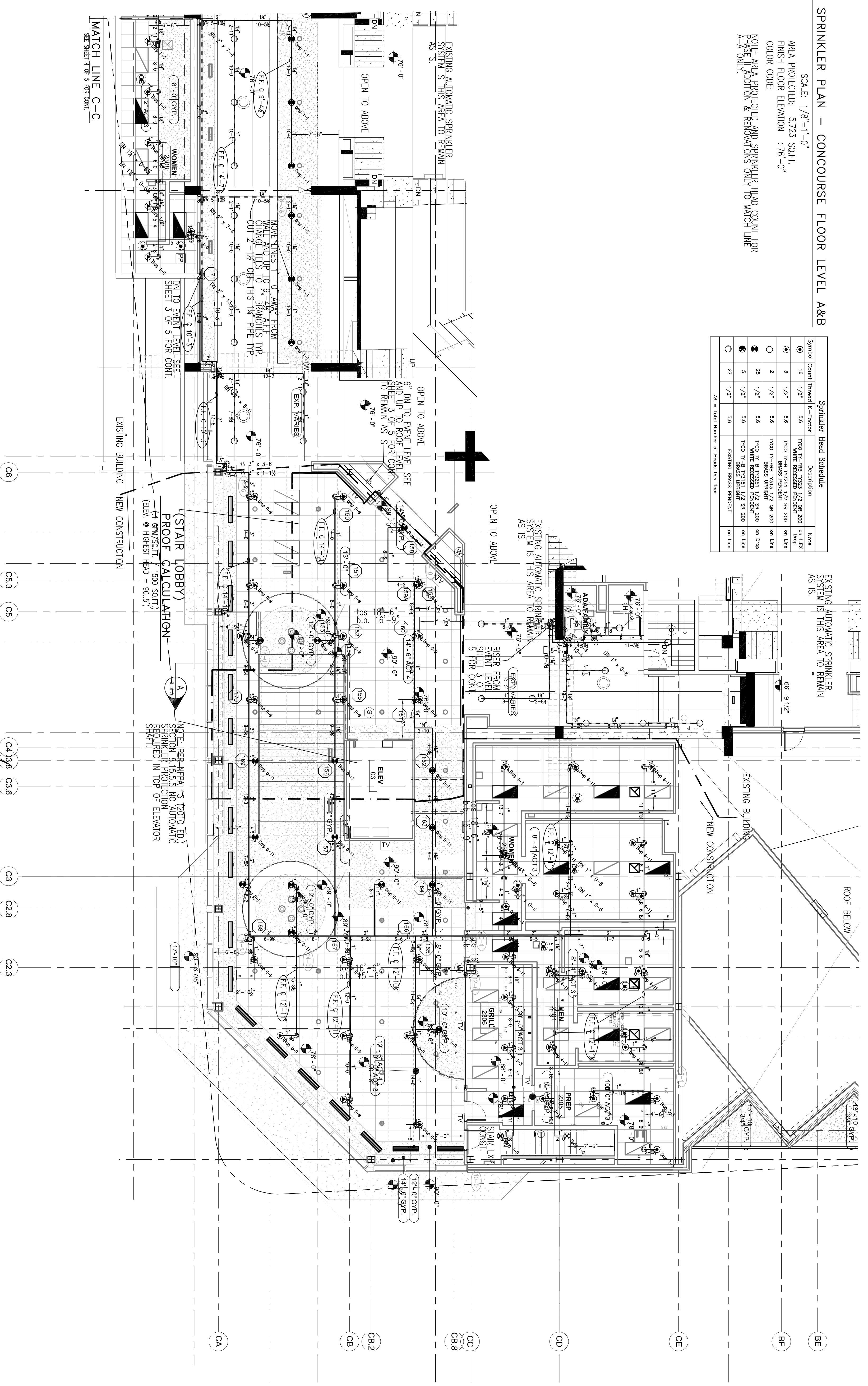


FIRE SPRINKLER PLAN - CONCOURSE FLOOR LEVEL A&B

SCALE: 1/8"=1'-0"
 AREA PROTECTED: 5,223 SQ.FT.
 FINISH FLOOR ELEVATION: 78'-0"
 COLOR CODE:
 NOTE: AREA PROTECTED AND SPRINKLER HEAD COUNT FOR PHASE II ADDITION & RENOVATIONS ONLY TO MATCH LINE A-A ONLY.

Symbol	Count	Head Size	Description	Note
○	16	1 1/2"	TIPO 78-108 10331 1/2 200 on Day	
○	3	1 1/2"	TIPO 78-108 10331 1/2 200 on Day	
○	2	1 1/2"	TIPO 78-108 10331 1/2 200 on Day	
○	28	1 1/2"	TIPO 78-108 10331 1/2 200 on Day	
○	5	1 1/2"	TIPO 78-108 10331 1/2 200 on Day	
○	27	1 1/2"	TIPO 78-108 10331 1/2 200 on Day	

78 = Total Number of Heads this floor

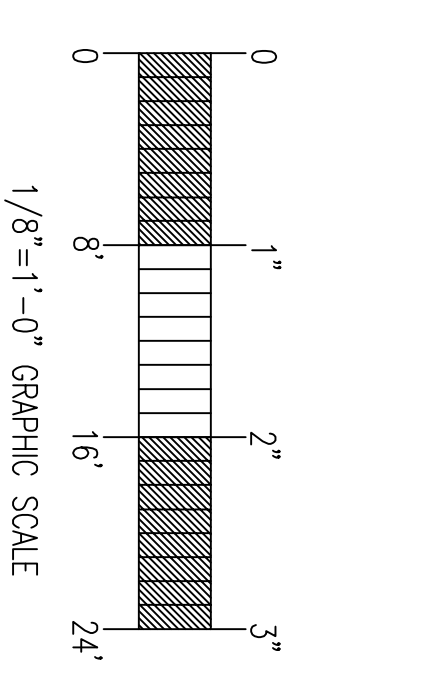


FIRE SPRINKLER PLAN - CONCOURSE FLOOR LEVEL C

SCALE: 1/8"=1'-0"
 AREA PROTECTED: 6,132 SQ.FT.
 FINISH FLOOR ELEVATION: 78'-0" @ GRILL/BATHROOMS
 COLOR CODE:
 NOTE: AREA PROTECTED AND SPRINKLER HEAD COUNT FOR PHASE II ADDITION & RENOVATIONS ONLY TO MATCH LINE C-C ONLY.

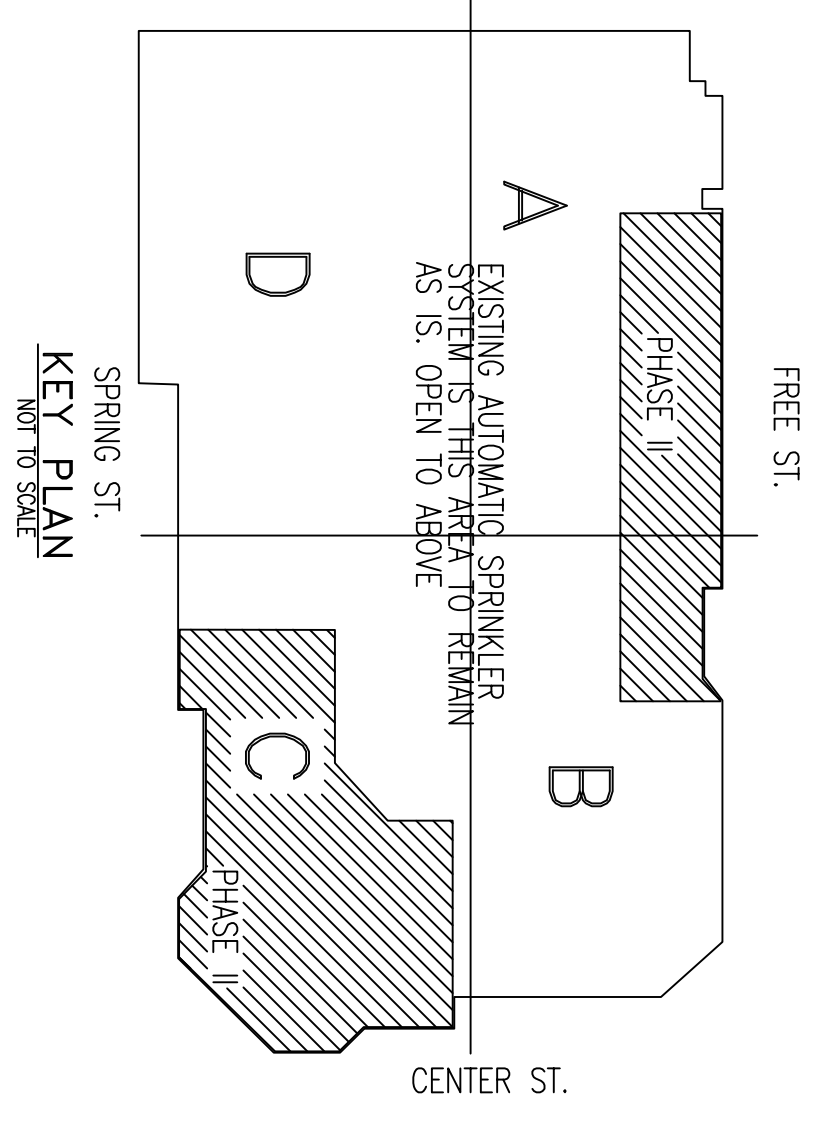
Symbol	Count	Head Size	Description	Note
○	27	1 1/2"	TIPO 78-108 10331 1/2 200 on Day	
○	21	1 1/2"	TIPO 78-108 10331 1/2 200 on Day	
○	48	1 1/2"	TIPO 78-108 10331 1/2 200 on Day	
○	5	1 1/2"	TIPO 78-108 10331 1/2 200 on Day	
○	2	1 1/2"	TIPO 78-108 10331 1/2 200 on Day	

87 = Total Number of Heads this floor



HYDRAULIC-SYSTEM
 THIS BUILDING IS PROTECTED BY A HYDRAULICALLY DESIGNED AUTOMATIC SPRINKLER SYSTEM (NEW STAIR CONCOURSE) LOCATION: ENTRY LEVEL 'C'
 No. OF SPRINKLERS: 11
 BASIS OF DESIGN:
 1. DESIGN AREA OF 1155
 2. DESIGN FLOW OF 1.155
 3. DESIGN PRESSURE OF 115.5
 SYSTEM DEMAND:
 1. WATER FLOW RATE (GPM) 314.79
 2. RESIDUAL PRESSURE AT THE BASE OF THE PUMP 94.44 (PSI)

HYDRAULIC DATA NAMEPLATE
 TO BE MAINTAINED AT SYSTEM RISER



GENERAL NOTES	DATE	REVISIONS	REQUIRED APPROVALS	FIRE SPRINKLER PLANS & DETAILS
SPRINKLER SYSTEM INSTALLATION TO COMPLY WITH NFPA PARAGRAPH # 13.2010 ED & SPEC SEC 211313 STAIRPIPE SYSTEM INSTALLATION TO COMPLY WITH NFPA PARAGRAPH # 14.2010 ED & SPEC SEC 211200 NEW BRANCH PIPING TO BE INSTALLED PER SCHEDULE 40 NEW MAIN PIPING TO BE SCHEDULE # 10 BLACK WITH MECHANICAL COUPLINGS OWNER TO PROVIDE SUFFICIENT HEAT THROUGHOUT BUILDING (EXCEPT FOR LOADING DOCK 1207&1300 AND TRASH BAY 1301 PROTECTED IN PHASE II) TO PREVENT FREEZING OF F.W. WATER TAPPED SPRINKLER TRUNK AND SUBMAIN (S.F.)			OWNER / ARCHITECT STATE FIRE MARSHAL PORTLAND FIRE DEPARTMENT	DWG. NO. 5 OF 5 JOB NUMBER AU-449-12 SCALE AS NOTED DATE 4/29/13

C.C.C.C. PHASE II ADDITION & RENOVATION
 PORTLAND, MAINE

CONTRACT WITH: THE CAMARGO CORP.

EASTERN FIRE PROTECTION
 AUBURN/LEWISTON INDUSTRIAL PARK, AUBURN, MAINE 04210