

HYDRAULIC-SYSTEM
THIS BUILDING IS PROTECTED BY A HYDRAULICALLY DESIGNED AUTOMATIC SPRINKLER SYSTEM.
(SUITE 4A)
LOCATION: 1ST FLOOR

No. OF SPRINKLERS: **14**
(CALCULATED)

BASIS OF DESIGN:
1. DENSITY (GPM/SQ.FT.) **.1**
2. DESIGNED AREA OF DISCHARGE (SQ.FT.) **1000**

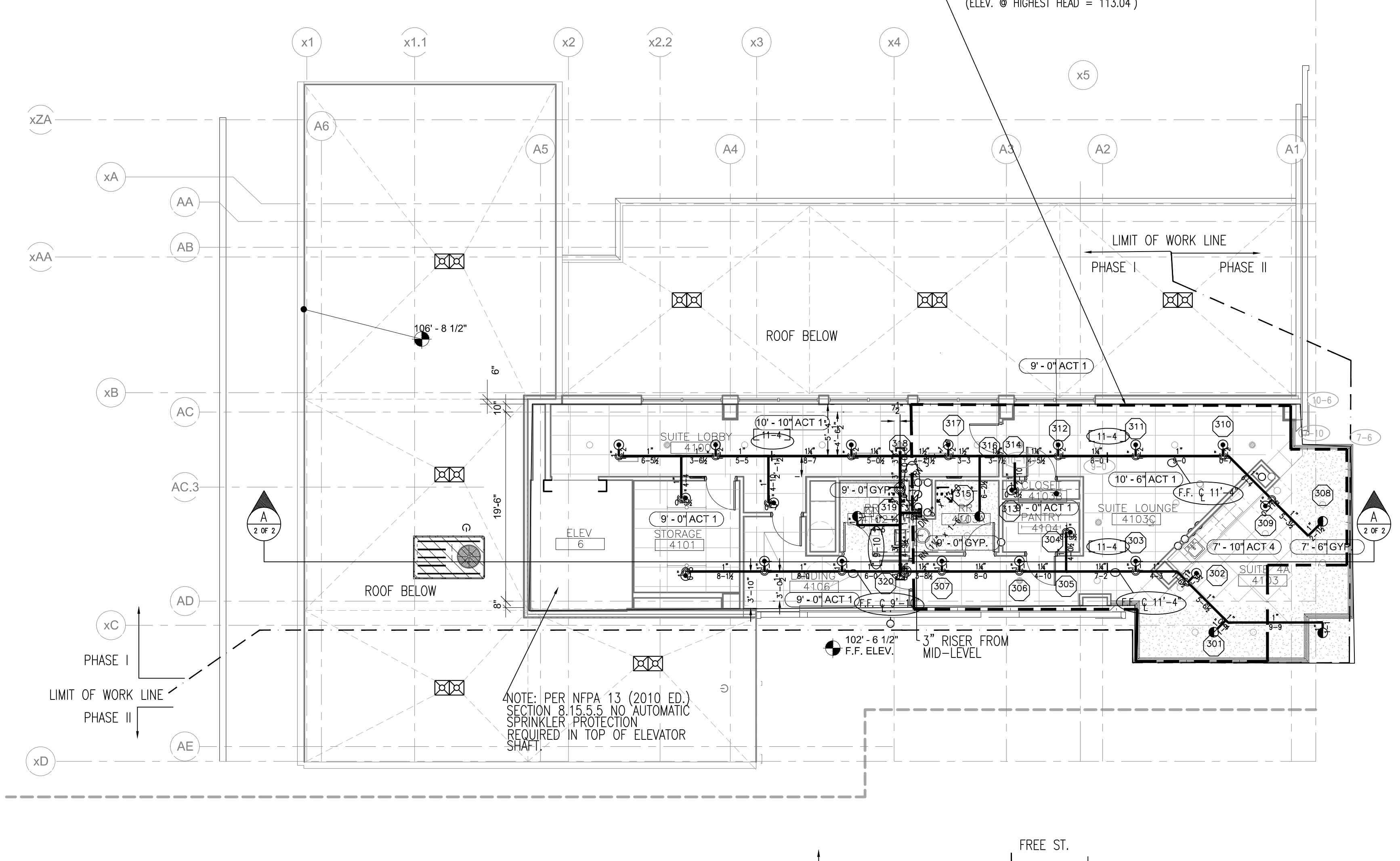
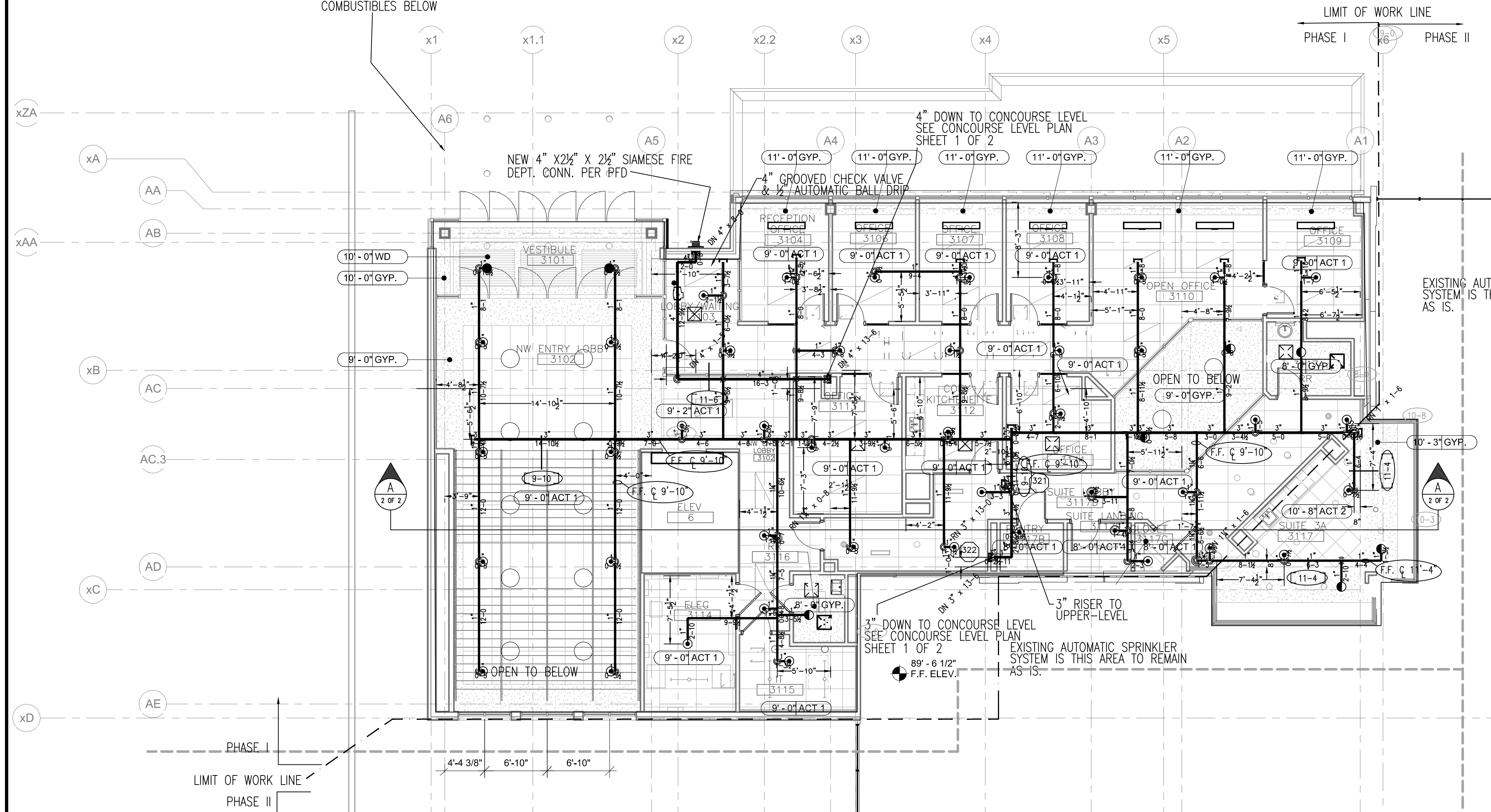
SYSTEM DEMAND:
1. WATER FLOW RATE (GPM) **400.89**
2. RESIDUAL PRESSURE AT THE BASE OF THE PUMP **74.9** (PSI)

HYDRAULIC DATA NAMEPLATE
TO BE MOUNTED AT SYSTEM RISER

NON-COMBUSTIBLE EXTERIOR CANOPY NO AUTOMATIC SPRINKLER PROTECTION REQUIRED PER NFPA#13 2010 EDITION SECTION 8.15.7.2 NO STORAGE OR HANDLING OF COMBUSTIBLES BELOW

SECTION "A-A"
NOT TO SCALE

(SUITE 4A)
HYDRAULICALLY MOST REMOTE AREA
(1 GPM/SQ.FT. / 1000 SQ.FT.)
(ELEV. @ HIGHEST HEAD = 113.04')



FIRE SPRINKLER PLAN - UPPER-SUITES FLOOR LEVEL

SCALE: 1/8"=1'-0"
AREA PROTECTED: 1,890 SQ.FT.
FINISH FLOOR ELEVATION : 102'-6 1/2"
COLOR CODE:

NOTE: AREA PROTECTED AND SPRINKLER HEAD COUNT FOR PHASE I ADDITION & RENOVATIONS ONLY TO LIMIT OF WORK LINE.

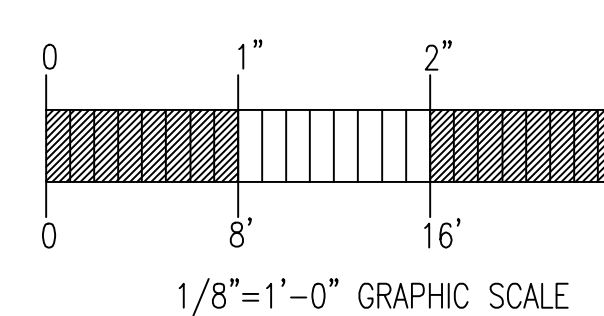
Symbol	Count	Thread	K-Factor	Description	Note
●	19	1/2"	5.6	TYCO TY-FRB TY2321 1/2 QR 200 on Loop	WHITE RECESSED PENDENT
●	5	1/2"	5.6	TYCO TY-FRB TY2321 1/2 QR 200 on Drop	WHITE RECESSED PENDENT
24 = Total Number of Heads this floor					

FIRE SPRINKLER PLAN - MID-SUITES FLOOR LEVEL

SCALE: 1/8"=1'-0"
AREA PROTECTED: 4,927 SQ.FT.
FINISH FLOOR ELEVATION : 89'-6 1/2"
COLOR CODE:

NOTE: AREA PROTECTED AND SPRINKLER HEAD COUNT FOR PHASE I ADDITION & RENOVATIONS ONLY TO LIMIT OF WORK LINE.

Symbol	Count	Thread	K-Factor	Description	Note
●	44	1/2"	5.6	TYCO TY-FRB TY2321 1/2 QR 200 on Loop	WHITE RECESSED PENDENT
●	6	1/2"	5.6	TYCO TY-FRB TY2321 1/2 QR 200 on Drop	WHITE RECESSED PENDENT
●	2	1/2"	5.6	TYCO TY-FRB TY2321 1/2 QR 200 on Loop	BRASS RECESSED PENDENT
52 = Total Number of Heads this floor					



GENERAL NOTES	DATE	REVISIONS	REQUIRED APPROVALS	FIRE SPRINKLER PLANS & DETAILS
SPRINKLER SYSTEM INSTALLATION TO COMPLY WITH NFPA PAMPHLET # 13 2010 ED. & SPEC SEC 211313 STANDPIPE SYSTEM INSTALLATION TO COMPLY WITH NFPA PAMPHLET # 14 2010 ED. & SPEC SEC 211200 NEW BRANCH LINE PIPING TO BE BLACK SCHEDULE 40 JOINED BY THREADED DUCTILE IRON FITTINGS NEW MAIN PIPING TO BE SCHEDULE # 10 BLACK WITH GROOVED ENDS & WELDED OUTLETS JOINED BY MECHANICAL COUPLINGS OWNER TO PROVIDE SUFFICIENT HEAT THROUGHOUT BUILDING TO PREVENT FREEZING OF WATER FILLED SPRINKLER PIPING AND EQUIPMENT. (40' F)			OWNER / ARCHITECT STATE FIRE MARSHAL PORTLAND FIRE DEPARTMENT DRAWN BY JWD NICET LEVEL III CERT.# 116803 CHECKED BY WAF NICET LEVEL III CERT.# 095574 CONTRACTOR LICENSE # 101 CONTRACTOR RMS # 368	C.C.C.C. PHASE I ADDITION & RENOVATION PORTLAND, MAINE EASTERN FIRE PROTECTION AUBURN/LEWISTON INDUSTRIAL AIRPARK, AUBURN, MAINE 04210 DWG. NO. 2 OF 2 JOB NUMBER AU-4949-12 SCALE AS NOTED DATE 12/6/12

