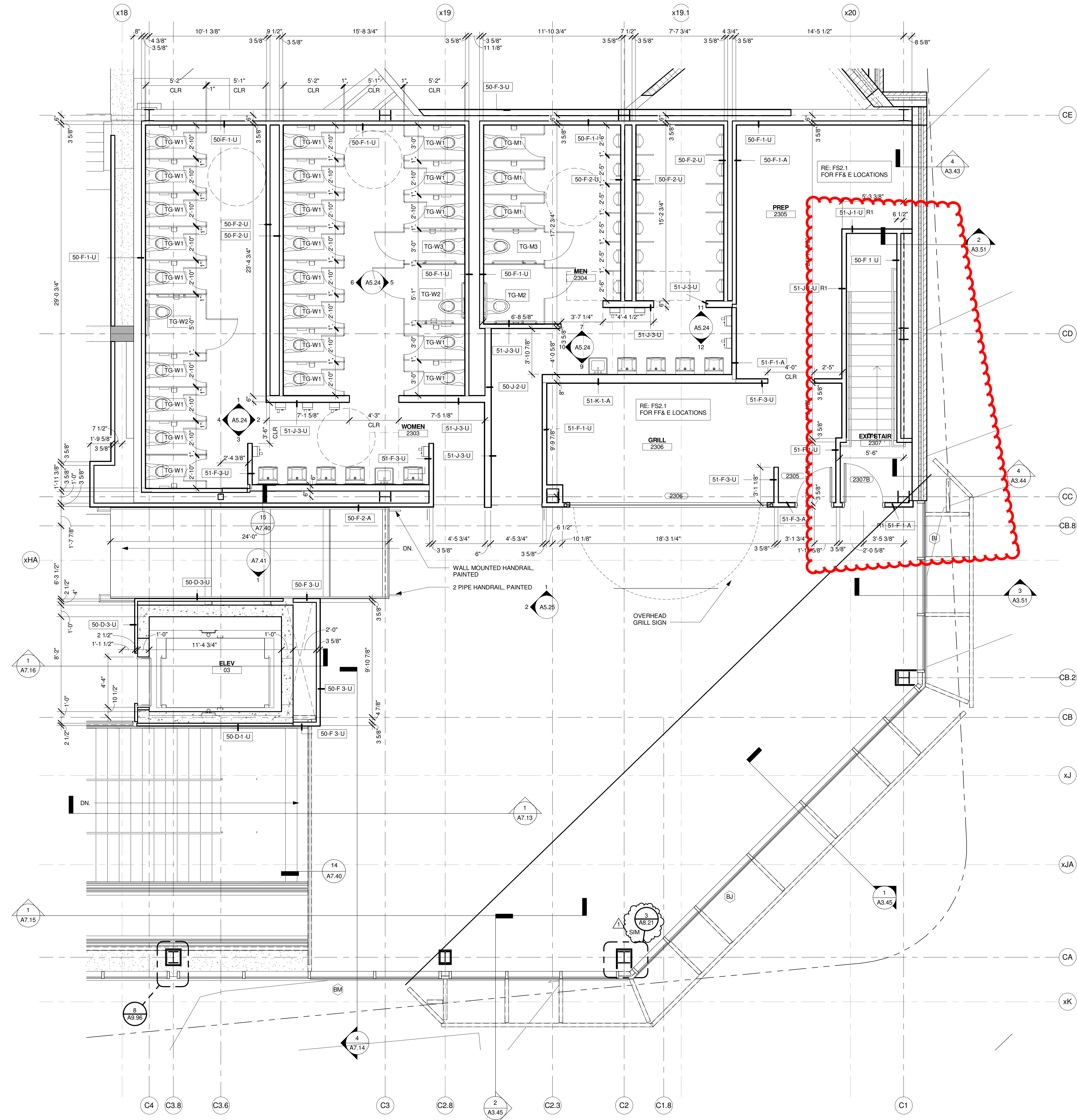


**SINK COMBS DETHLEFS**

Copyright by Sink Combs Dethlefs, P.C.  
 475 Lincoln Street, Suite 100, Denver, Colorado 80202  
 303.336.0200  
 FAX 303.336.0222

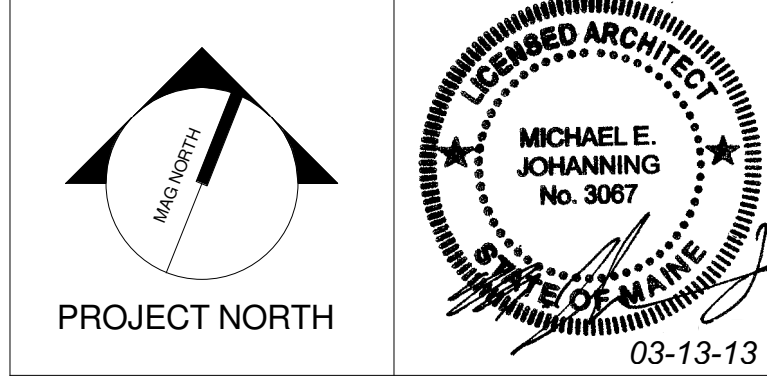
**NOTES**  
 1. REFER TO SHEET A5.00 FOR DETAILED INFO RELATED TO RESTROOMS AND SHOWERS.



REVISED LAYOUT BASED ON ADDITION OF EXIT STAIR

2	SI #060	03-13-2013
1	SI #047	02-27-2013
0	CONSTRUCTION DOCUMENTS	01-21-2013
REV.	DESCRIPTION	DATE

**SI #060**  
 03-13-2013  
 CURRENT ISSUE STATUS:



**WBRC**  
 ARCHITECTS • ENGINEERS  
 WWW.WBRCAL.COM  
 BANGOR, MAINE 207.947.4511  
 PORTLAND, MAINE 207.833.4511  
 SUWANEEVILLE, FLORIDA 354.672.7272

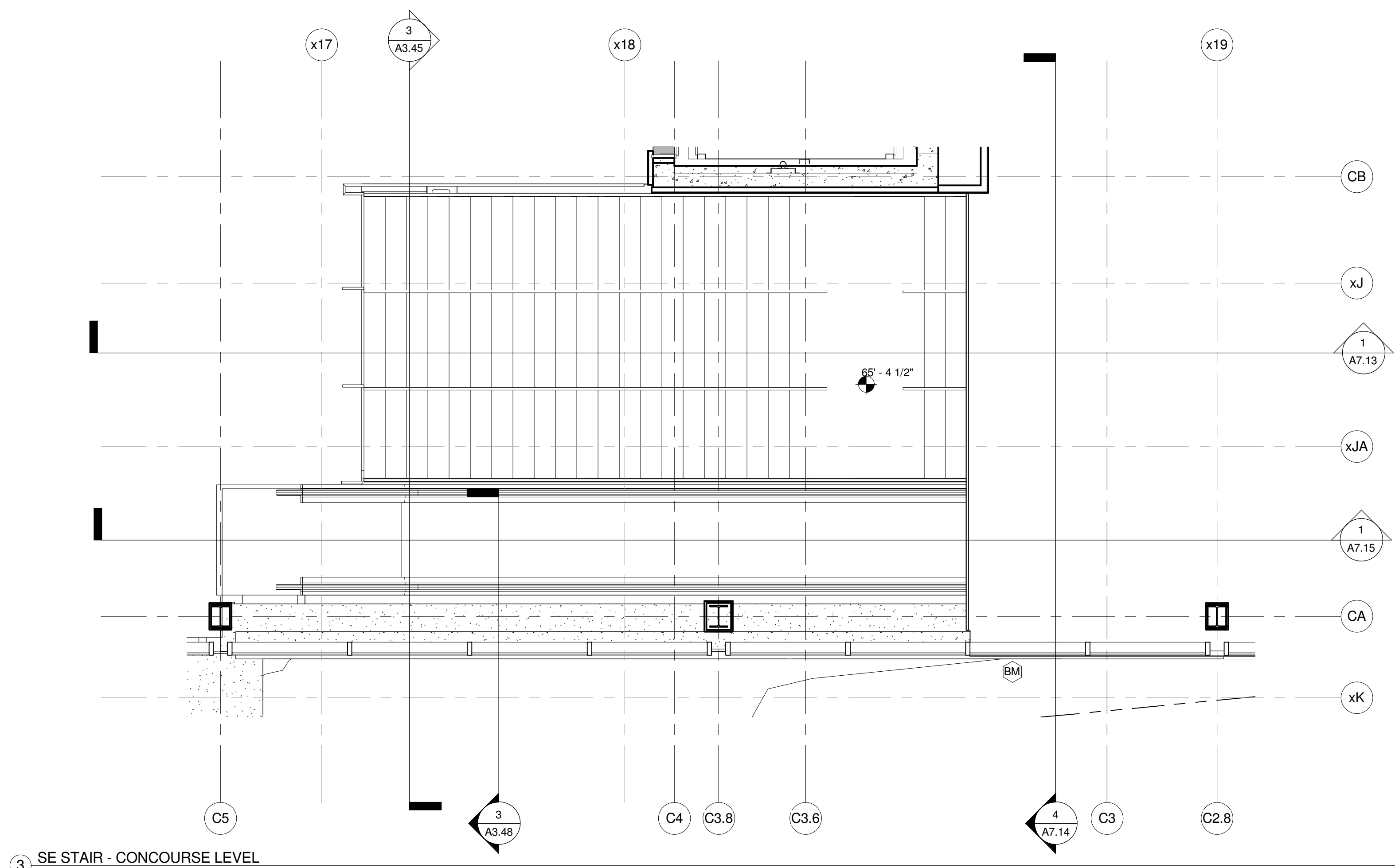
**CUMBERLAND COUNTY CIVIC CENTER RENOVATION**

PROJECT: PORTLAND, MAINE  
**ENLARGED PLANS - CONCOURSE - SE GRILL**

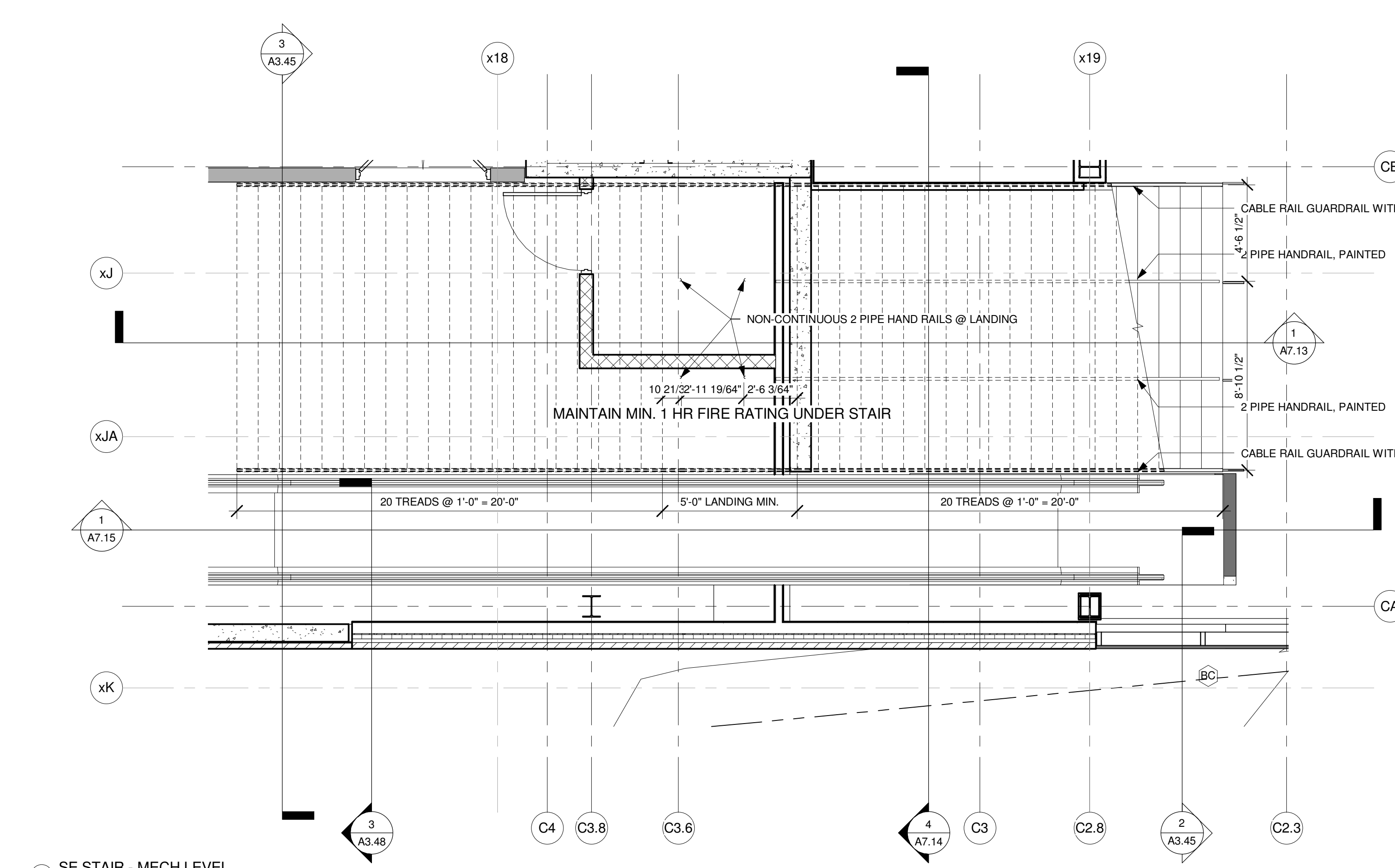
SHEET TITLE	
WBRC CAD FILE: C:\Revit\Local\2013\CCCC Architecture_job.dwg	
PROJECT No. 3757.00	GRAPHIC SCALE 1" = 1'-0"
SCALE 1/4" = 1'-0"	
PROJECT MANAGER: JRB	SHEET No.
DRAWN BY: RAD	<b>A4.25</b>
CHECKED BY: MEJ	

1 ENLARGED PLAN - SE CONCOURSE  
 1/4" = 1'-0"

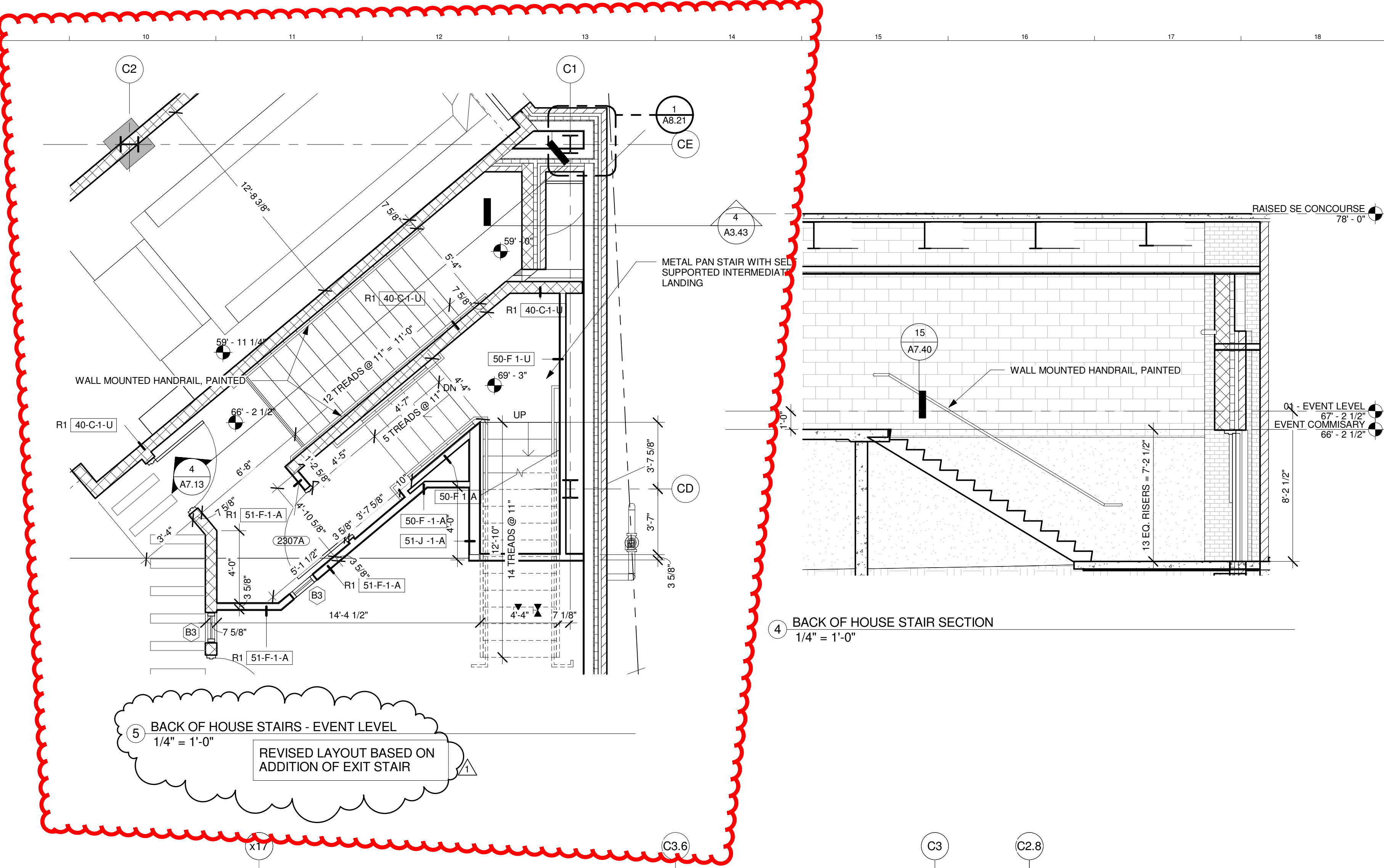
3/13/2013 11:45:35 AM  
 C:\Revit\Local\2013\CCCC Architecture\_job.dwg



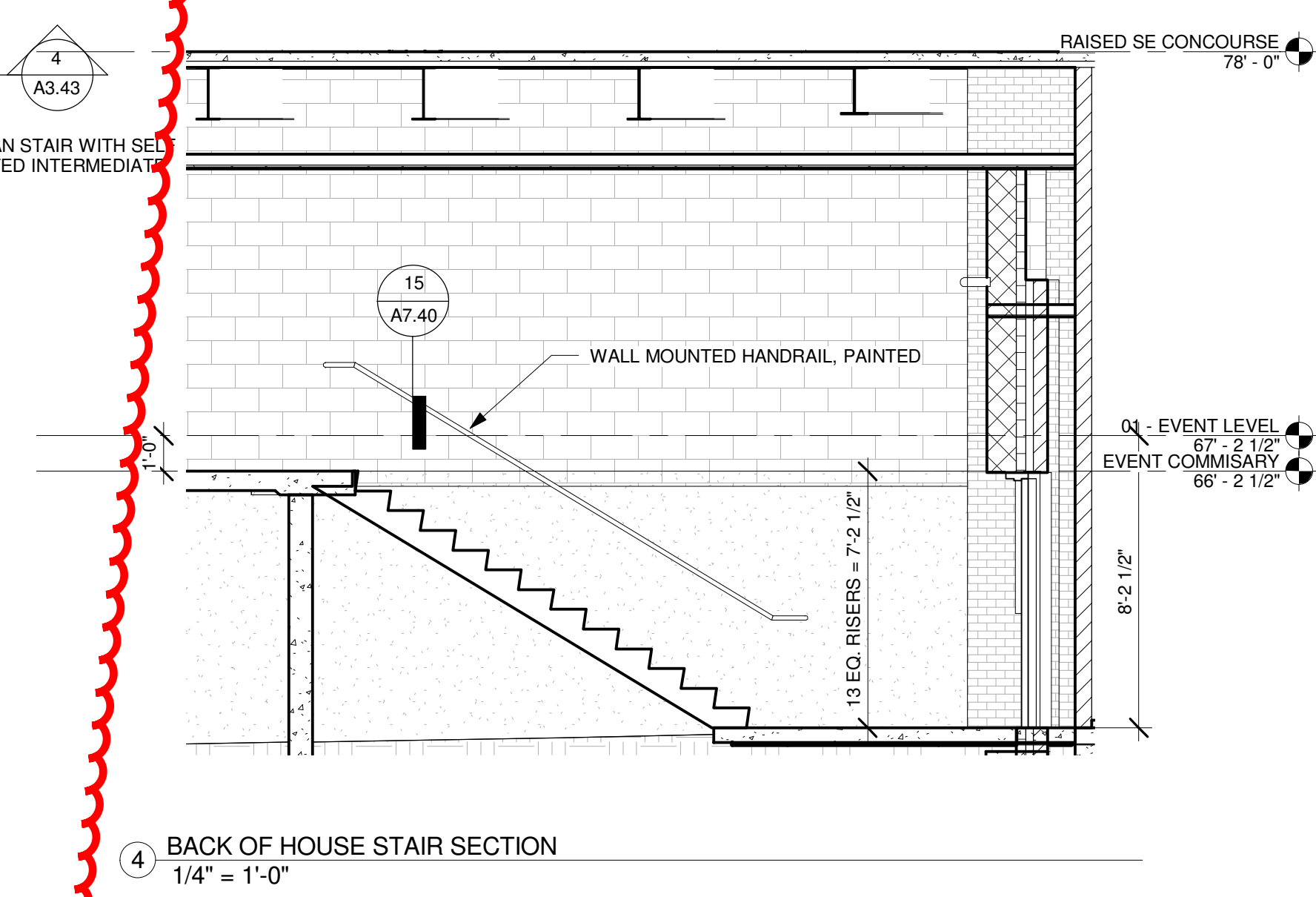
3 SE STAIR - CONCOURSE LEVEL  
 1/4" = 1'-0"



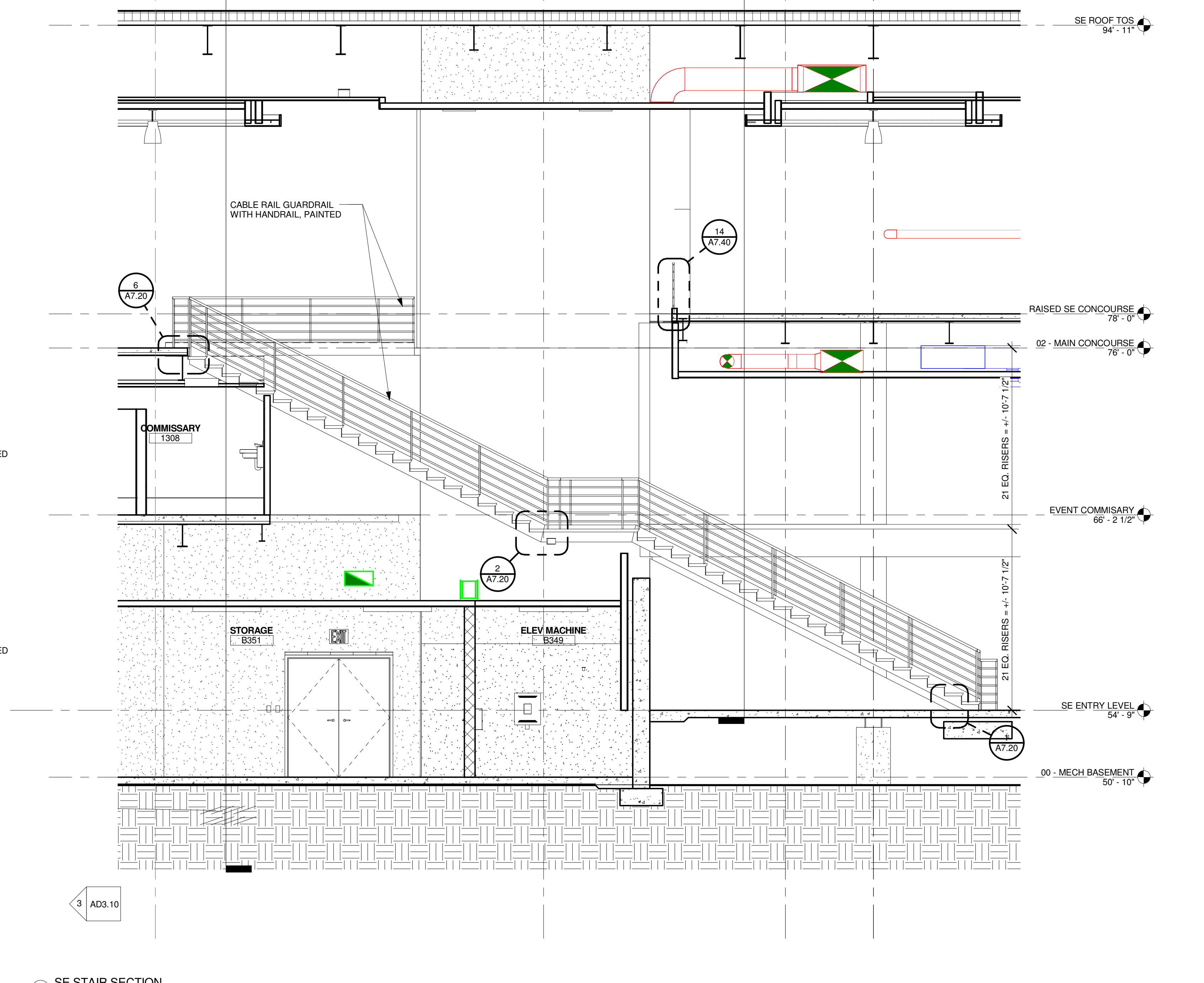
2 SE STAIR - MECH LEVEL  
 1/4" = 1'-0"



5 BACK OF HOUSE STAIRS - EVENT LEVEL  
 1/4" = 1'-0"  
 REVISED LAYOUT BASED ON ADDITION OF EXIT STAIR

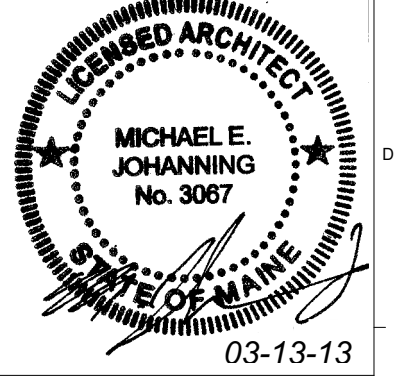


4 BACK OF HOUSE STAIR SECTION  
 1/4" = 1'-0"



1 SE STAIR SECTION  
 1/4" = 1'-0"

1	SI #060	03-13-2013
0	CONSTRUCTION DOCUMENTS	01-21-2013
REV.	DESCRIPTION	DATE
	SI #060	
	03-13-2013	
CURRENT ISSUE STATUS:		



**WBRC**  
 ARCHITECTS • ENGINEERS  
 WWW.WBRCAL.COM  
 BANGOR, MAINE 207.947.4511  
 PORTLAND, MAINE 207.838.4511  
 SUDBURY, FLORIDA 941.556.0727

CUMBERLAND COUNTY CIVIC CENTER RENOVATION  
 PROJECT: PORTLAND, MAINE  
**STAIR PLANS & SECTIONS**

SHEET TITLE		A7.13	
PROJECT No.	3757.00	GRAPHIC SCALE	1" = 1'-0"
SCALE	1/4" = 1'-0"		
PROJECT MANAGER	JRB	SHEET No.	A7.13
DRAWN BY	RAJ		
CHECKED BY	MEJ		

3/13/2013 11:45:56 AM  
 C:\Revit\Loops\3757\00 - CCCC Architecture Job\dwg\stair.vrt