

OCCUPANCY NOTES: IBC

UPSTAIRS BAR ROOM 520 SQ. FT. @ 5 SQ. FT. NET	104 OCCUPANTS
BAR 79 SQ. FT. @ 100 SQ. FT. GROSS	1 OCCUPANTS
OFFICE 35 SQ. FT. @ 50 SQ. FT. GROSS	1 OCCUPANTS
DECK 455 SQ. FT. @ 5 SQ. FT. NET	91 OCCUPANTS
<b>TOTAL SECOND FLOOR</b>	<b>197 OCCUPANTS</b>

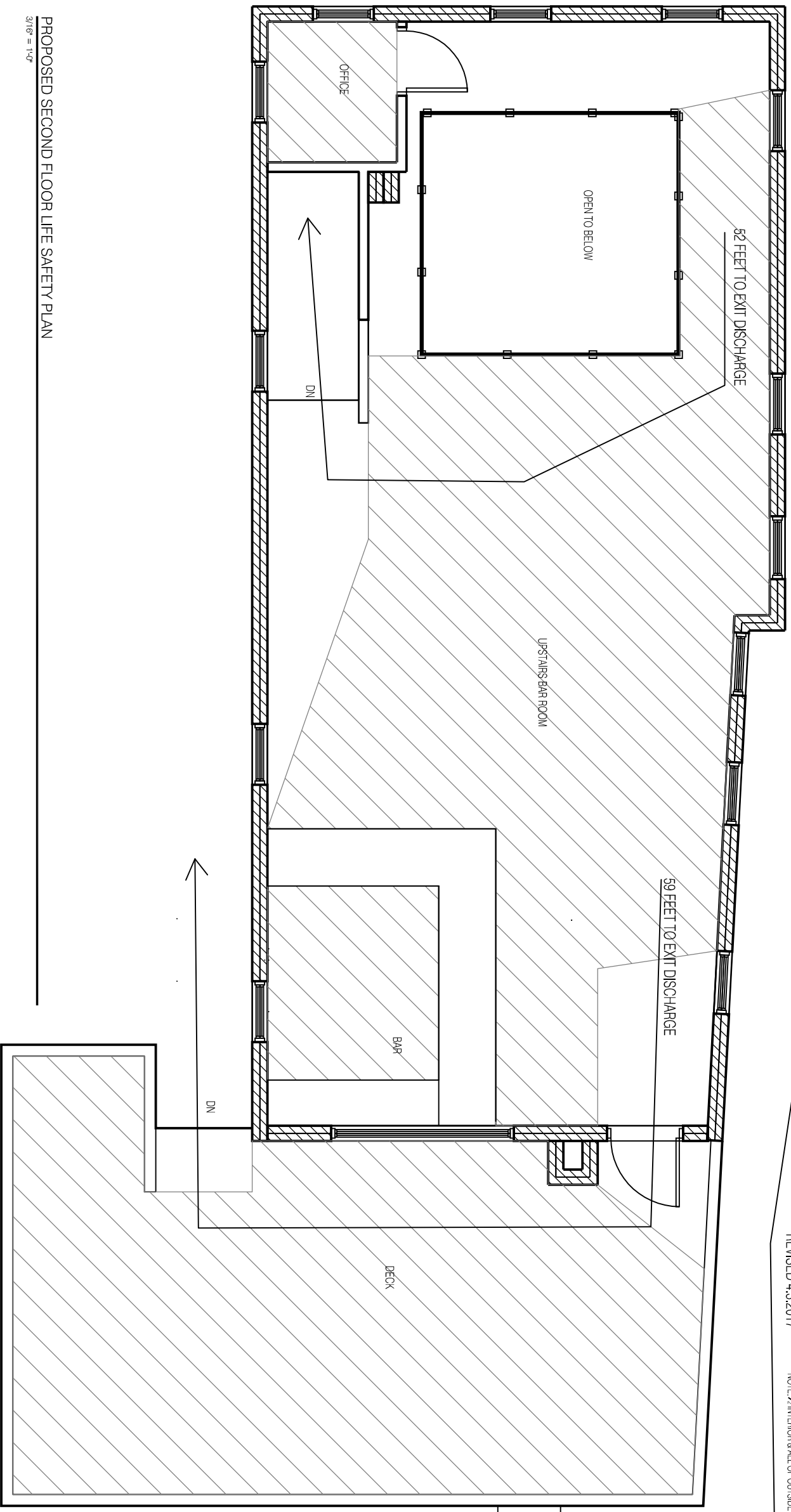
LIFE SAFETY 101

@ 7 SQ. FT. NET	74 OCCUPANTS
@ 100 SQ. FT. GROSS	1 OCCUPANT
@ 50 SQ. FT. NET	1 OCCUPANT
@ 7 SQ. FT. GROSS	68 OCCUPANTS
<b>TOTAL FIRST FLOOR</b>	<b>141 OCCUPANTS</b>

EGRESS REQUIREMENTS:

2 EGRESSSES REQ.	36' DOOR EXISTING
EGRESS DOOR WIDTH REQ. 38 OCCUPANTS @ 2' = 7.6'	48' STAIR EXISTING
EGRESS STAIR WIDTH REQ. 103 OCCUPANTS @ 3' = 30.9'	
MINIMUM STAIR WIDTH 44"	

REVISED 4.3.2017 NOTE: X INTERIOR & ALL OF OUTSIDE DECK FOR EXTERIOR STAIR EGRESS



PROPOSED SECOND FLOOR LIFE SAFETY PLAN  
3/16" = 1'-0"

- LIFE SAFETY NOTES:
1. SEE THE CODE NOTES ON THE COVER
  2. THE SECOND FLOOR EXISTING EGRESS LAYOUT IS NOT CHANGING.
  3. THE EXISTING LIFE SAFETY SYSTEM WILL REMAIN IN PLACE AND DOES NOT REQUIRE ANY CHANGES.
  4. THE EXISTING WINDOWS IN NORTH WALL ARE BEING ENLARGED FOR A NEW 8 FOOT WIDE WINDOW.
  5. THE EXISTING CEILING IS BEING RAISED TO THE UNDERSIDE OF ROOF RAFTERS AND WILL HAVE 5/8" TYPE X GYPSUM.



DATE:	4.3.2017
DRAWN BY:	BB