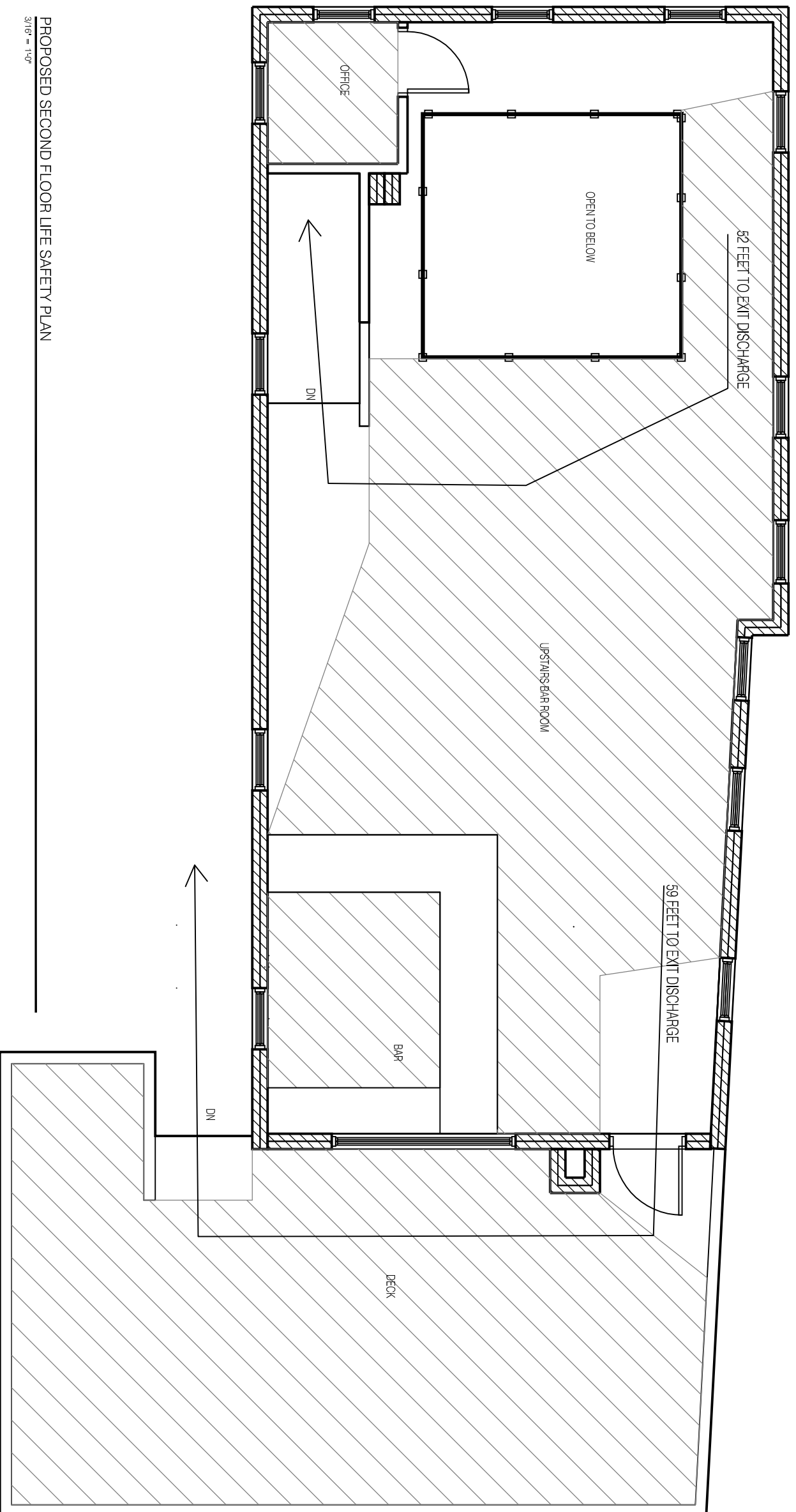


<b>OCCUPANCY NOTES:</b>		
UPSTAIRS BAR ROOM 520 SQ. FT. @ 5 SQ.FT. NET	104 OCCUPANTS	EGRESS REQUIREMENTS:
BAR 79 SQ.FT. @ 100 SQ.FT. GROSS	1 OCCUPANTS	2 EGRESSES REQ.
OFFICE 35 SQ.FT. @ 50 SQ.FT. GROSS	1 OCCUPANTS	EGRESS DOOR WIDTH REQ. 123 OCCUPANTS @ 2' = 24.6"
DECK 455 SQ.FT. @ 5 SQ.FT. NET	91 OCCUPANTS	EGRESS STAIR WIDTH REQ. 123 OCCUPANTS @ 3' = 36.9"
TOTAL SECOND FLOOR	197 OCCUPANTS	MINIMUM STAIR WIDTH 44"
		36" DOOR EXISTING
		48" STAIR EXISTING



PROPOSED SECOND FLOOR LIFE SAFETY PLAN  
3/16" = 1'-0"

- LIFE SAFETY NOTES:**
1. SEE THE CODE NOTES ON THE COVER
  2. THE SECOND FLOOR EXISTING EGRESS LAYOUT IS NOT CHANGING.
  3. THE EXISTING LIFE SAFETY SYSTEM WILL REMAIN IN PLACE AND DOES NOT REQUIRE ANY CHANGES.
  4. THE EXISTING WINDOWS IN NORTH WALL ARE BEING ENLARGED FOR A NEW 8 FOOT WIDE WINDOW.
  5. THE EXISTING CEILING IS BEING RAISED TO THE UNDERSIDE OF ROOF RAFTERS AND WILL HAVE 5/8" TYPE X GYPSUM.

