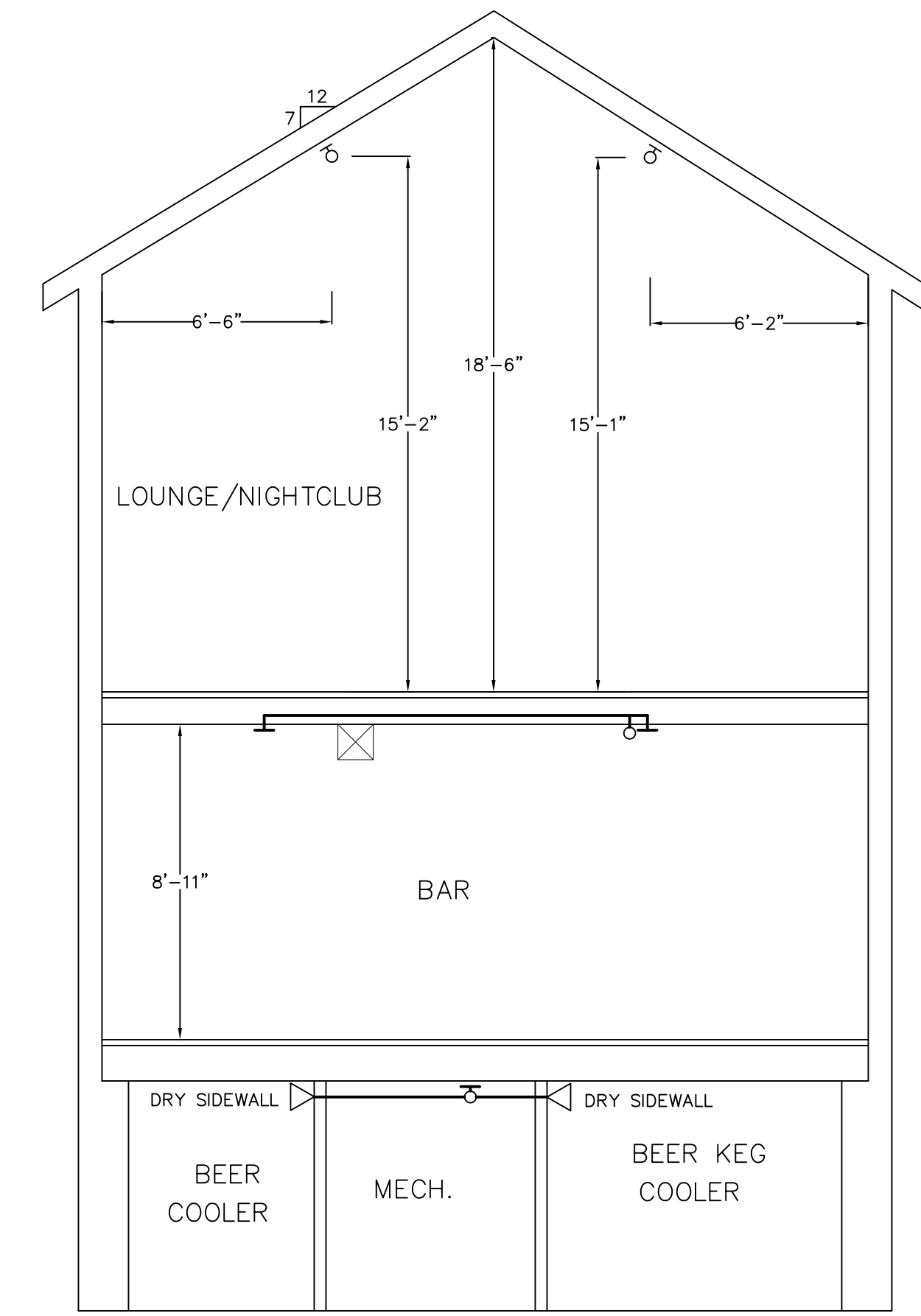
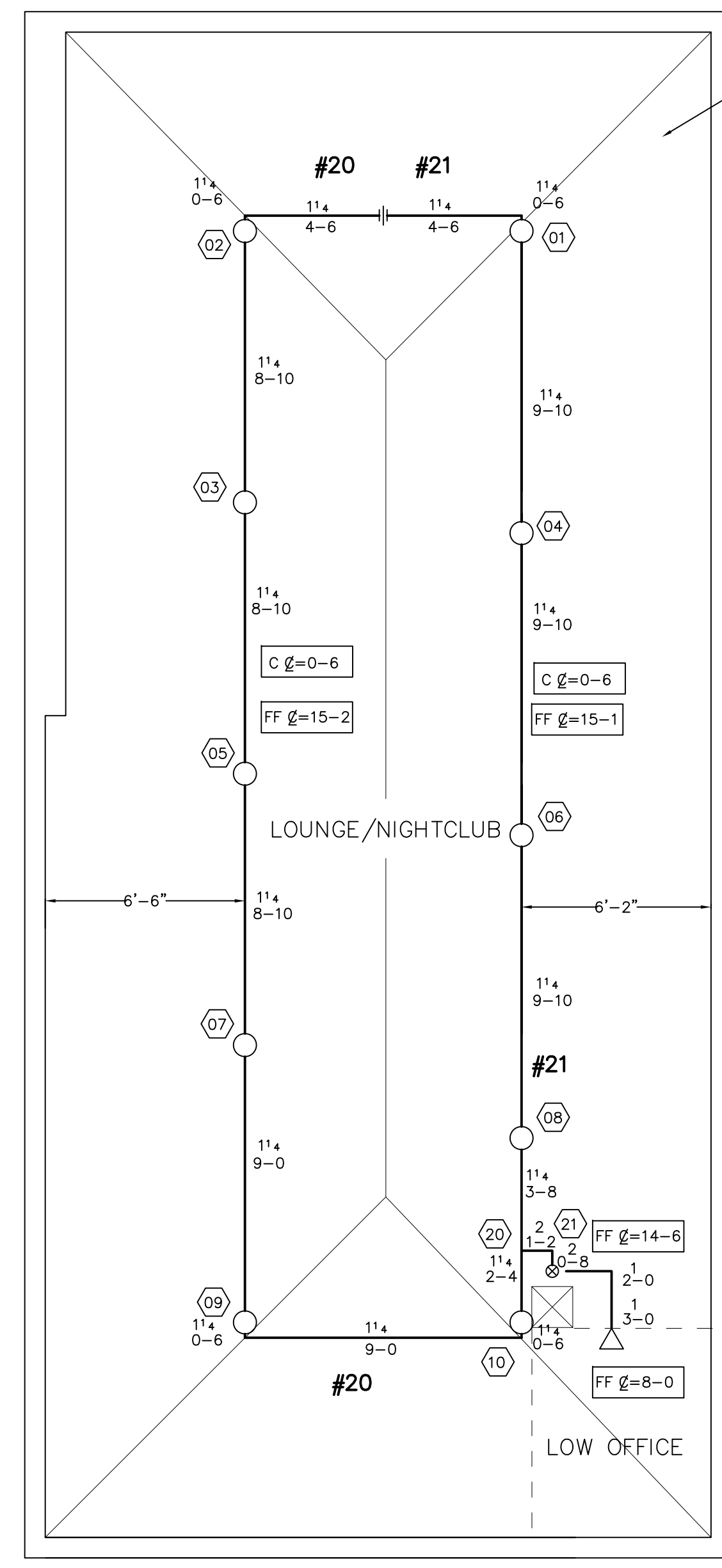
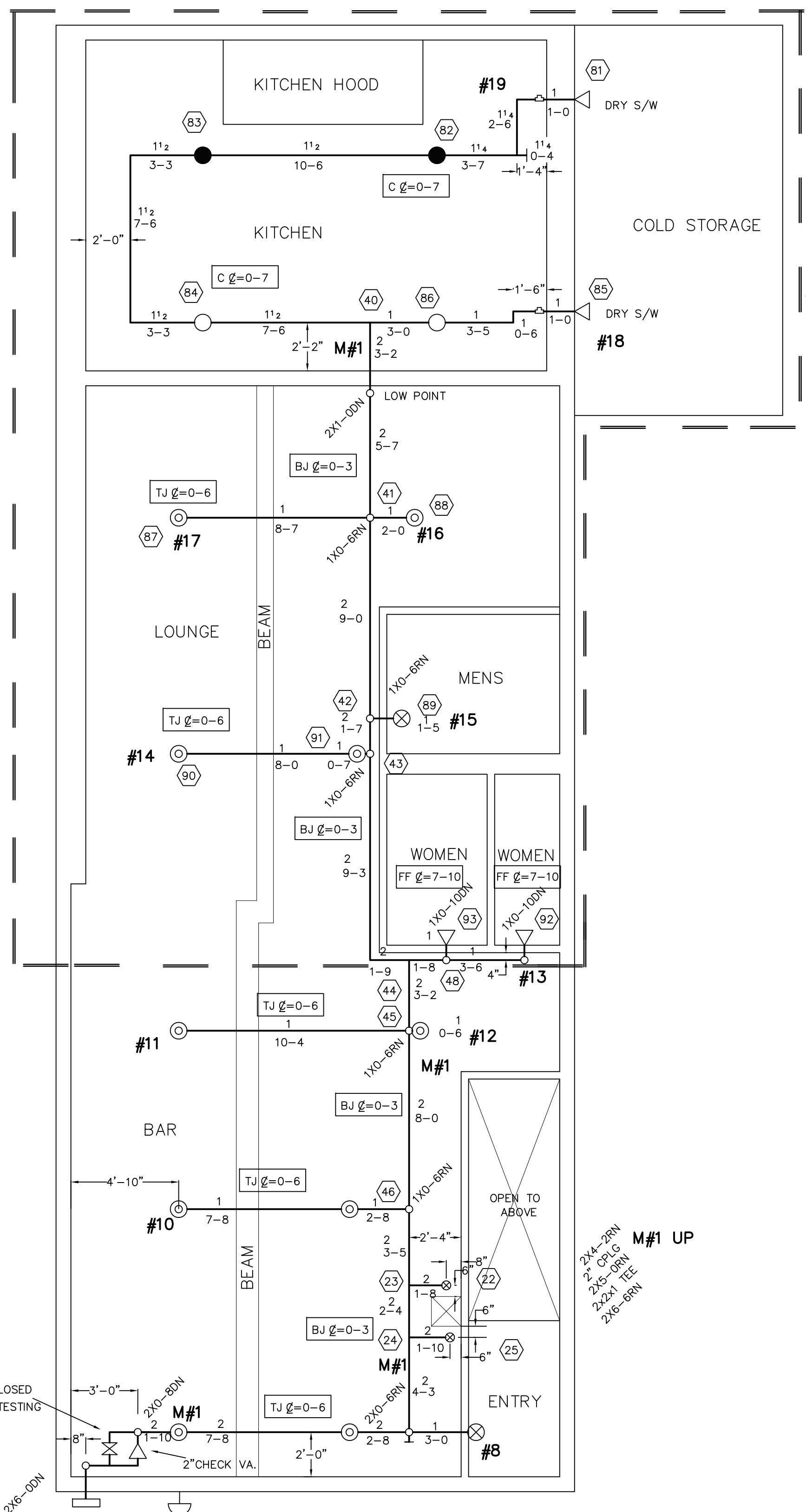
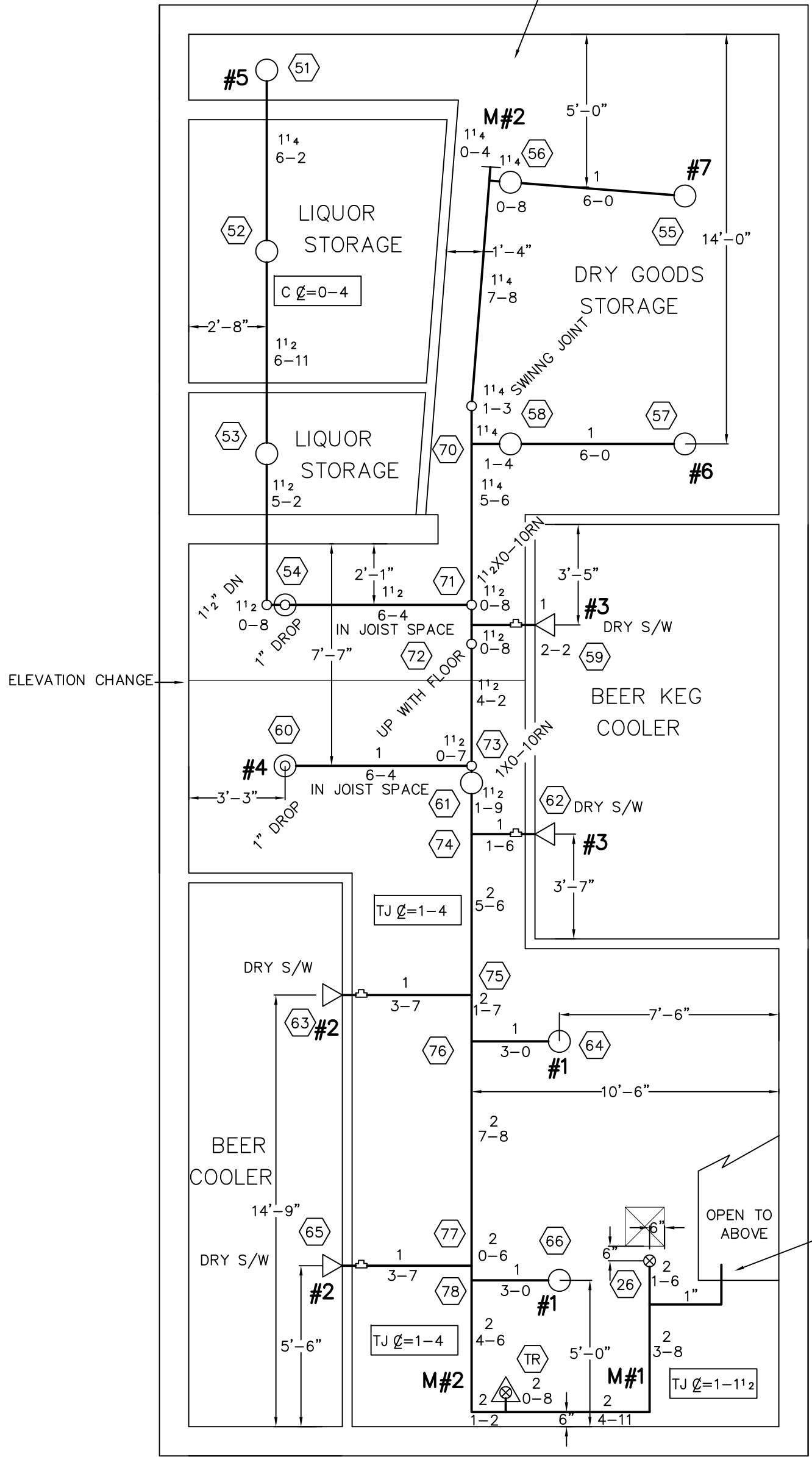
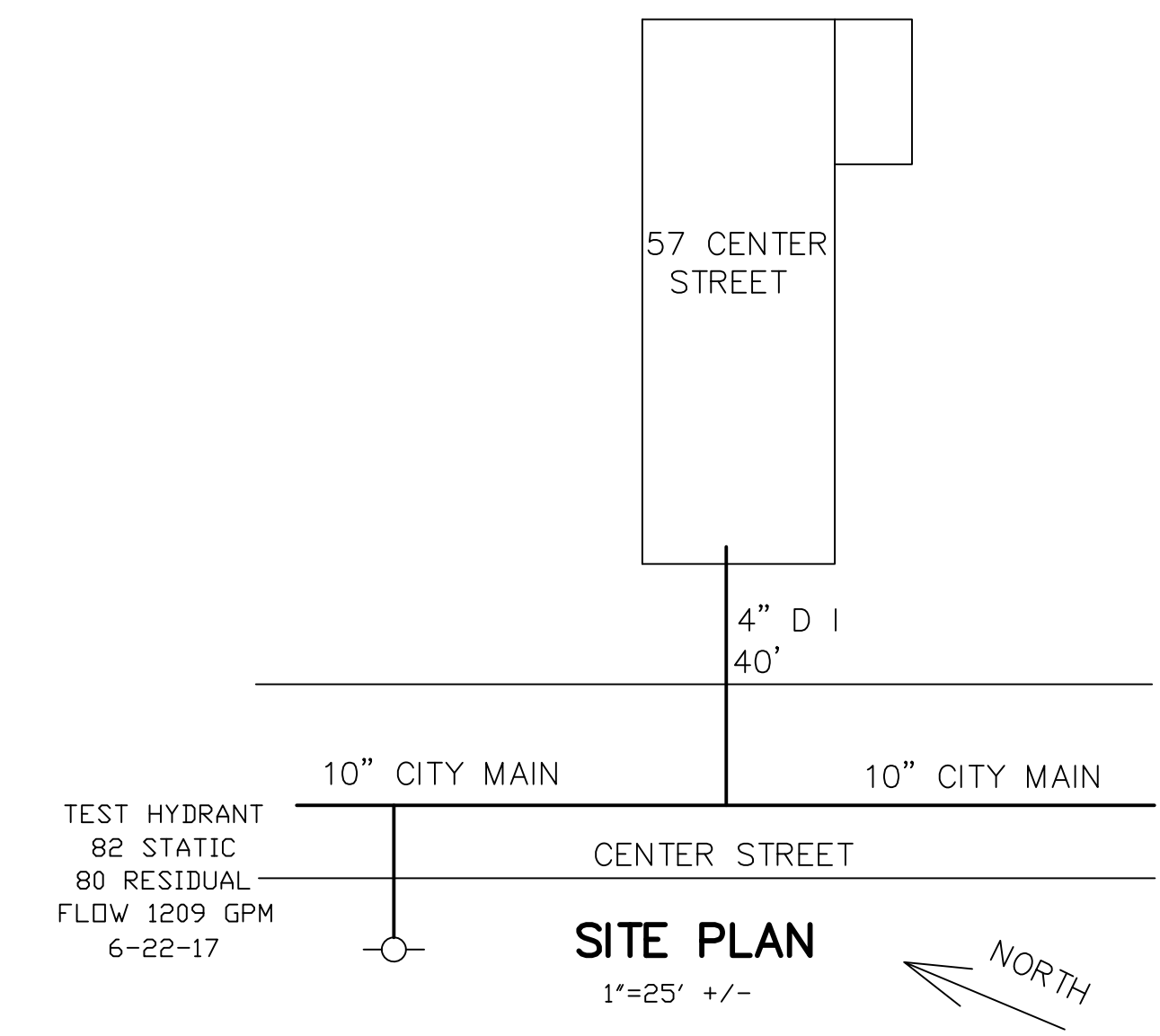


CALC: BRIAN BORU
 BASEMENT.WXF
 HYDRAULIC DATA:
 BASIS OF DESIGN:
 DENSITY 0.15 AREA OF COVERAGE ENTIRE
 TOTAL ORIFICE TEMP 155'
 SPRINKLERS 16 1/2" 155'
 SYSTEM DEMAND AT CITY:
 PRESSURE 74.6 FLOW 329.1 HOSE 250
 SAFETY MARGIN 6.9 PSI
 OCCUPANCY: PUB/LOUNGE BASEMENT

CALC: BRIAN BORU
 FIRST FLOOR.WXF
 HYDRAULIC DATA:
 BASIS OF DESIGN:
 DENSITY 0.15 AREA OF COVERAGE 900 SQ FT
 TOTAL ORIFICE TEMP 155'
 SPRINKLERS 13 1/2" 155'
 SYSTEM DEMAND AT CITY:
 PRESSURE 76.4 FLOW 233.8 HOSE 250
 SAFETY MARGIN 5.2 PSI
 OCCUPANCY: PUB/LOUNGE/KITCHEN

CALC: BRIAN BORU
 SECOND FLOOR.WXF
 HYDRAULIC DATA:
 BASIS OF DESIGN:
 DENSITY 0.10 AREA OF COVERAGE ENTIRE
 TOTAL ORIFICE TEMP 155'
 SPRINKLERS 10 1/2" 155'
 SYSTEM DEMAND AT CITY:
 PRESSURE 64.3 FLOW 166.1 HOSE 100
 SAFETY MARGIN 17.6 PSI
 OCCUPANCY: PUB/LOUNGE



BASEMENT
 THE BASEMENT HAS VERY LIMITED HEADROOM.
 ALL DIMENSIONS ARE PLUS OR MINUS.
 ALL CENTERLINES ARE PLUS OR MINUS.
 ALL ELEVATION CHANGES ARE NOT SHOWN.

FIRST FLOOR

SECOND FLOOR

SECTION

SYSTEM CLASSIFICATION

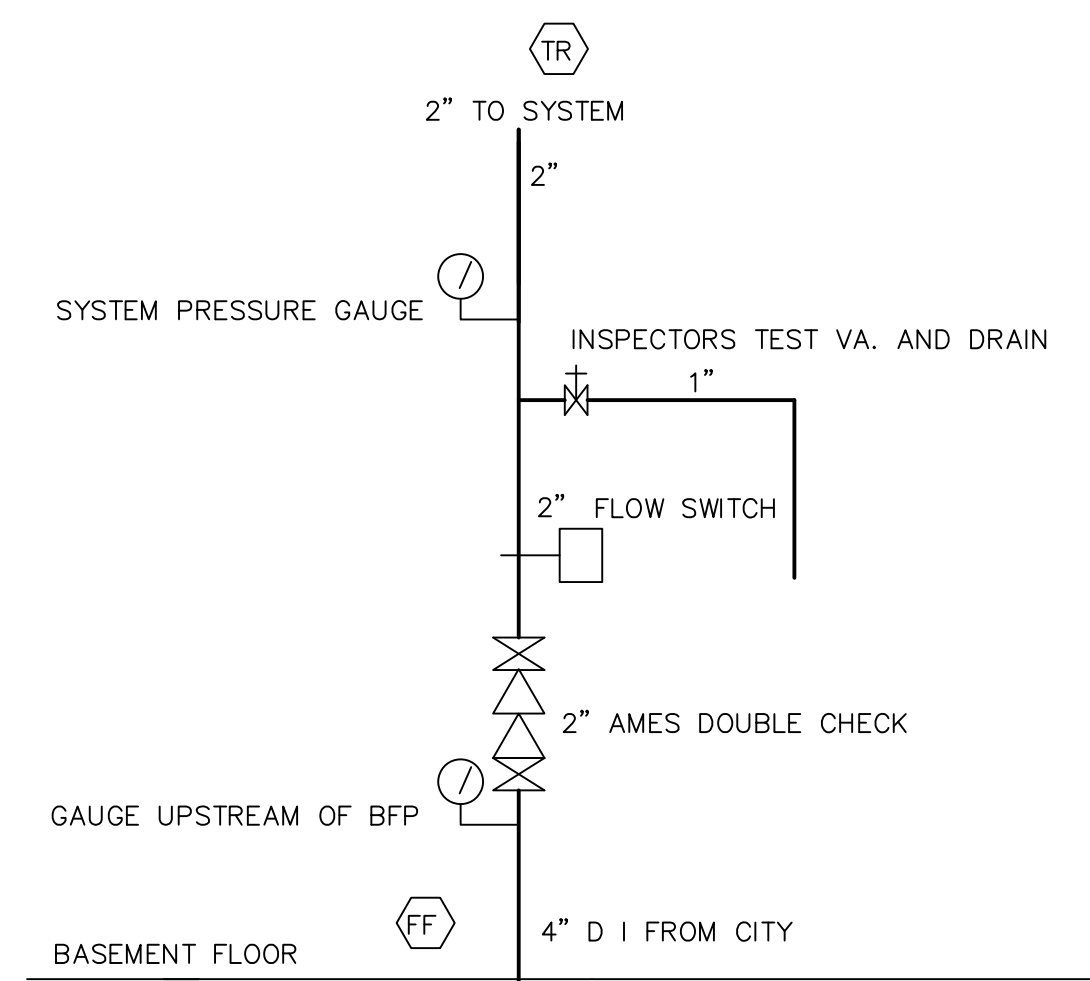
INSTALL AN NFPA #13 WET PIPE SYSTEM IN THE
 BASEMENT, FIRST AND SECOND FLOORS
 TO MEET NFPA #13, STATE OF MAINE
 AND CITY OF PORTLAND CODES,

- 12 RELIABLE F1FR
 155' OR BRASS PENDENT
 1/2"X1/2" K=5.6
- 22 RELIABLE F1FR
 155' OR BRASS UPRIGHT
 1/2"X1/2" K=5.6
- 2 RELIABLE F1FR
 200' OR BRASS UPRIGHT
 1/2"X1/2" K=5.6
- 3 RELIABLE F1FR
 155' WHITE SIDEWALL
 1/2"X1/2" K=5.6
- 2 RELIABLE F1FR
 155' WHITE PENDENT
 1/2"X1/2" K=5.6
- 6 RELIABLE
 155' OR BRASS DRY SIDEWALL
 1/2"X1/2" K=5.6

GENERAL NOTES

ALL DIMENSIONS ARE CENTER TO CENTER U/N
 ALL 2" AND SMALLER PIPE TO SCH 40 BLACK STEEL
 ALL SCREWED FITTINGS TO BE STD. WT. C.I. BLACK U/N
 ALL HANGER SPACING AND SIZES TO CONFORM TO NFPA #13.
 SUFFICIENT HEAT TO PREVENT FREEZING OF THE WET PIPE SPRINKLER SYSTEM
 AND REQUIRED INSULATION METHODS PER NFPA STANDARDS
 ARE REQUIRED TO BE FURNISHED BY THE BUYER/OWNER.

- 22-155' RELIABLE F1FR56 Q R BRASS UPRIGHTS
- ⊙ 12-155' RELIABLE F1FR56 Q R BRASS PENDENTS
- ⊗ 2-155' RELIABLE F1FR56 Q R WHITE PENDENTS
- ▷ 6-155' RELIABLE DRY SIDEWALL BRASS
- 2-200' RELIABLE F1FR56 Q R BRASS UPRIGHTS
- ▷ 3-155' RELIABLE F1FR56 Q R WHITE SIDEWALLS
- TJ=XX TOP OF JOISTS TO CENTERLINE OF PIPE
- FF=XX FIN FLR TO CENTERLINE OF PIPE
- BJ=XX BOTTOM OF JOISTS TO CENTERLINE OF PIPE
- C=XX CEILING TO CENTERLINE OF PIPE
- RISE OR DROP NIPPLE
- ⊙ RISER BETWEEN FLOORS



RISER SECTION
NO SCALE

NO.	DATE	REVISIONS	DATE	APPROVED BY	DATE	SURVEYED BY	HAK
1	11-4-17					HAK	11-4-17
2	11-5-17					HAK	11-5-17
3						DAS	xxxx
4						DAS	xxxx
5						DAS	xxxx
6						DAS	xxxx
7						DAS	xxxx
8						DAS	xxxx
9						DAS	xxxx
10						DAS	xxxx
11						DAS	xxxx
12						DAS	xxxx
13						DAS	xxxx
14						DAS	xxxx
15						DAS	xxxx
16						DAS	xxxx
17						DAS	xxxx
18						DAS	xxxx
19						DAS	xxxx
20						DAS	xxxx
21						DAS	xxxx
22						DAS	xxxx
23						DAS	xxxx
24						DAS	xxxx
25						DAS	xxxx
26						DAS	xxxx
27						DAS	xxxx
28						DAS	xxxx
29						DAS	xxxx
30						DAS	xxxx
31						DAS	xxxx
32						DAS	xxxx
33						DAS	xxxx
34						DAS	xxxx
35						DAS	xxxx
36						DAS	xxxx
37						DAS	xxxx
38						DAS	xxxx
39						DAS	xxxx
40						DAS	xxxx
41						DAS	xxxx
42						DAS	xxxx
43						DAS	xxxx
44						DAS	xxxx
45						DAS	xxxx
46						DAS	xxxx
47						DAS	xxxx
48						DAS	xxxx
49						DAS	xxxx
50						DAS	xxxx
51						DAS	xxxx
52						DAS	xxxx
53						DAS	xxxx
54						DAS	xxxx
55						DAS	xxxx
56						DAS	xxxx
57						DAS	xxxx
58						DAS	xxxx
59						DAS	xxxx
60						DAS	xxxx
61						DAS	xxxx
62						DAS	xxxx
63						DAS	xxxx
64						DAS	xxxx
65						DAS	xxxx
66						DAS	xxxx
67						DAS	xxxx
68						DAS	xxxx
69						DAS	xxxx
70						DAS	xxxx
71						DAS	xxxx
72						DAS	xxxx
73						DAS	xxxx
74						DAS	xxxx
75						DAS	xxxx
76						DAS	xxxx
77						DAS	xxxx
78						DAS	xxxx
79						DAS	xxxx
80						DAS	xxxx
81						DAS	xxxx
82						DAS	xxxx
83						DAS	xxxx
84						DAS	xxxx
85						DAS	xxxx
86						DAS	xxxx
87						DAS	xxxx
88						DAS	xxxx
89						DAS	xxxx
90						DAS	xxxx
91						DAS	xxxx
92						DAS	xxxx
93						DAS	xxxx
94						DAS	xxxx
95						DAS	xxxx
96						DAS	xxxx
97						DAS	xxxx
98						DAS	xxxx
99						DAS	xxxx
100						DAS	xxxx

DEAN & ALLYN, INC.
 FIRE PROTECTION - SPECIAL HAZARD
 116 LEWISTON ROAD, GRAY, MAINE 04039
 (207)657-5646 FAX: (207)657-5647

BRIAN BORU PUBLIC HOUSE
 57 CENTER STREET
 PORTLAND MAINE

NO. OF SPRINKLERS SHOWN ON THIS SHEET 47
 NO. OF SPRINKLERS ON JOB 47
 CONTRACT NO. C171475