

INSULATION NOTES

1. Insulate supply ductwork with 1-1/2" ductwrap, F&K meeting NFPA 90A 4 B, @29 Blu-in/r-11°F at 15°F mean temperature.
2. Insulate domestic water piping with 1" fiberglass insulation with ASJ, @29 Blu-in/r-11°F at 15°F mean temperature.
3. Insulate condensate piping, Refrigerant Liquid (RL) and Refrigerant Suction (RS) piping with 1/2" flexible uncircular insulation.
4. Insulation shall be suitable for installation in a plenum.
5. Submit insulation materials for review by the Engineer.

PLUMBING NOTES

1. Domestic water piping shall be Type 'L' copper with cast bronze or wrought copper fittings.
2. Sanitary piping shall be service weight cast iron or 'No Hub' cast iron. No Hub fittings shall be Clamp-All HI-TORQ125 with 304SS housing, ASTM C-564 neoprene gasket, shall maintain 15 PSI hydrostatic seal and shall comply with F1660, IBC and local codes and requirements.
3. Vent piping shall be schedule 40 PVC.
4. (P-1) Water Closet - Wall-mounted, flush valve, Toto CT108E, elongated bowl, white vitreous china, low consumption (128 gpf), 1-1/2" top spud inlet.
 - a. Flush Valve - Sloan Royal Model III, Zurn or approved equal. Furnish with bumper stop, vacuum breaker and stop valve.
 - b. Seat - Church Model 5500C, commercial weight solid plastic, open front, self-sustaining check hinge, for elongated bowl, white color.
 - c. Wall Carrier - Furnish with Zurn, MIFAB, Wade or Smith concealed wall carrier.
5. (P-2) ADA Urinal - Wall-hung, flush-valve type, Toto UT441, white vitreous china, low consumption (10 gpf), urinal lip shall extend a minimum of 14" from finished wall.
 - a. Flush Valve - Sloan Royal 186-10, Zurn or approved equal. Furnish with bumper stop, vacuum breaker and stop valve.
 - b. Carrier - Zurn, MIFAB, Wade or Jay R Smith concealed wall carriers.
 - c. ADA urinals shall be installed with front rim a maximum of 17" above finished floor. Final installation shall meet ADA guidelines and ANSI A111.
6. (P-3) Lavatory, Countertop - Toto LT501, 20"x11", white vitreous china, faucet holes on 4" centers, front edge shall extend a minimum of 11" from rear finished wall.
 - a. Faucet - Symmons Symmetrix Model S-20-2-FR wrist operation handle, 0.5 GPM flow aerator, polished chrome finish, ceramic control cartridge, single lever.
 - b. Drain - perforated grid strainer with bright metal finish.
 - c. Trap - Chrome plated, cast copper alloy, 1-1/4" P-trap with cleanout plug. Adjustable with connected elbow and nipple to wall. Insulate trap and supplies with Tsuboro Model 102 insulation kit with FVC cover.
 - i. ADA lavatories shall be installed at 34" above finished floor. Final installation of lavatory and accessories shall meet ADA guidelines and ANSI A111.
7. (P-4) ADA Kitchen Sink, Single Bowl Elkay LRAD2521 stainless steel, 25"x21 1/2"x6" deep overall size, 4 faucet holes on 4" centers, fully sound deadened. Drain shall be located in upper left or right corner of bowl.
 - a. Faucet - Chicago Model 2301-B, single handle, 2.0 gpm aerator, 10" spout, polished chrome finish, ceramic control cartridge, hose and spray.
 - b. Strainer - Dayton Model D-125 with removable basket and neoprene stopper.
 - c. Sink installation shall be in compliance with the ADA guidelines.
 - d. Insulation Kit - Insulate exposed supply and waste piping at handicapped accessible sinks with fully molded insulation kit, McGaule Products Proltrap, 3/16" thick closed vinyl with anti-microbial additive, 102 Blu-in/r-F2 of thermal conductivity, white color.
 - e. Disposer - In-Sink-Erator Model "IT", 1/4 Hp, 120V, batch feed with integral overload protection, 5 year warranty.

SPRINKLER NOTES

1. Design and install modifications to the existing sprinkler system to provide required coverage for all renovated areas.
2. Sprinkler work shall be performed by a licensed Fire Protection Contractor. Design of modifications shall be performed and sealed by a Professional Engineer licensed in the State of Maine or with NICET Level III (minimum) certification.
3. Sprinkler heads shall match existing.
4. Sprinkler piping shall be suitable for installation in a plenum.
5. Submit sprinkler layout, calculations, piping and appurtenances for review by the Engineer.

DUCTWORK NOTES

1. Ductwork and fittings shall be constructed from galvanized steel (G90) in conformance with SMACNA "Duct Construction Standards" and NFPA90A for 2" WG, pressure class. Longitudinal joints shall be Pittsburgh Lockseam (ONLY).
2. Duct joints shall be sealed to SMACNA seal class B. Joint sealer shall be Hardcast "Duct-Seal 321" water based sealant.
3. Flexible duct shall be Wiremold type WGF, polyester core with wire helix, 1-1/2" thick fiberglass insulation, polyolefin jacket/vapor barrier. Maximum length shall be 4'-0". Flexible ducts shall be secured with clinch type stainless steel drawbands or tool tightened nylon straps.
4. Submit duct sealer and flexible ducts for review by the Engineer.

ELECTRIC BASEBOARD HEATER PERFORMANCE SCHEDULE

TAG	OUTPUT (MBH)	AIRFLOW (CFM)	MTGHT. AFF (IN)	ELECTRICAL REQUIREMENTS KW	V/PH/Hz	BASIS OF DESIGN - BERKO	SERVICE	MODEL
EBB-1	3.4	-	-	1.0	277/1/60	MULTIPLE		EKOC2514W

PROVIDE WITH REMOTE THERMOSTATS.
* MOUNTING HEIGHT SHALL BE PER MANUFACTURER'S RECOMMENDATIONS

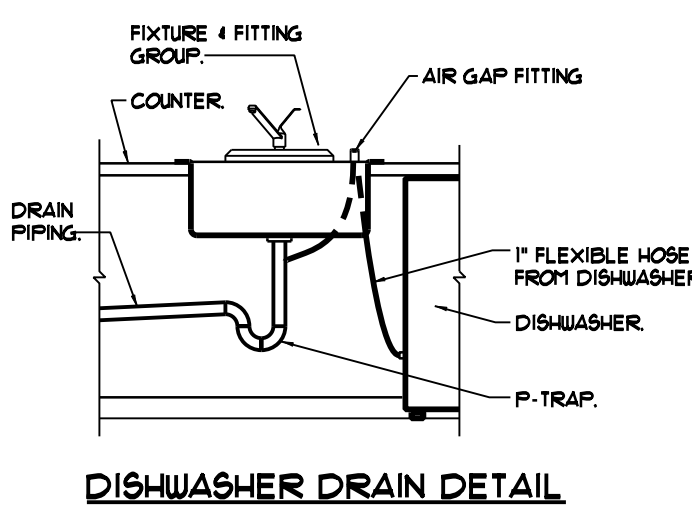
ELECTRIC WATER HEATER PERFORMANCE SCHEDULE

TAG	STORAGE (GALS)	RECOVERY @ 80°F	ELECTRICAL REQUIREMENTS HP	WATTS	V/PH/Hz	BASIS OF DESIGN - AOSMITH	SERVICE	MODEL
EWH-1	2.5	1.0 GPH	-	1500	120/1/60	LUNCH ROOM P-4		EJC-2

PLUMBING FIXTURE CONNECTION SCHEDULE

TAG	DESCRIPTION	SAN	VENT	CW	HW
P-1	WALL MOUNTED FLUSH VALVE WC	4"	2"	1"	-
P-2	WALL HUNG URINAL	2"	1-1/2"	1/2"	-
P-3	COUNTERTOP LAVATORY	1-1/2"	1-1/2"	1/2"	1/2"
P-4	ADA SINGLE BOWL SS KITCHEN SINK	1-1/2"	1-1/2"	1/2"	1/2"

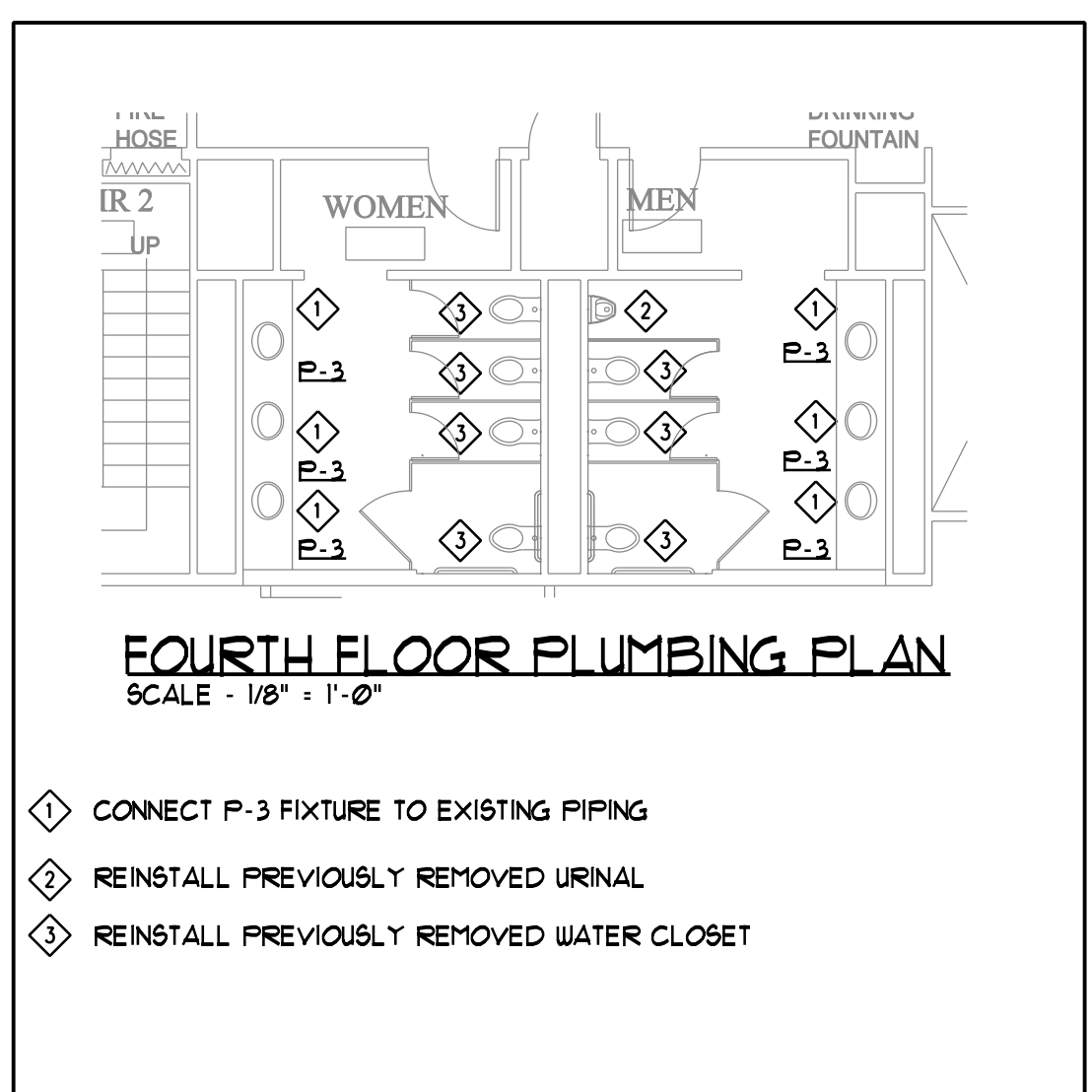
MINIMUM SIZE OF BELOW SLAB SANITARY 4 VENT PIPING SHALL BE 2".



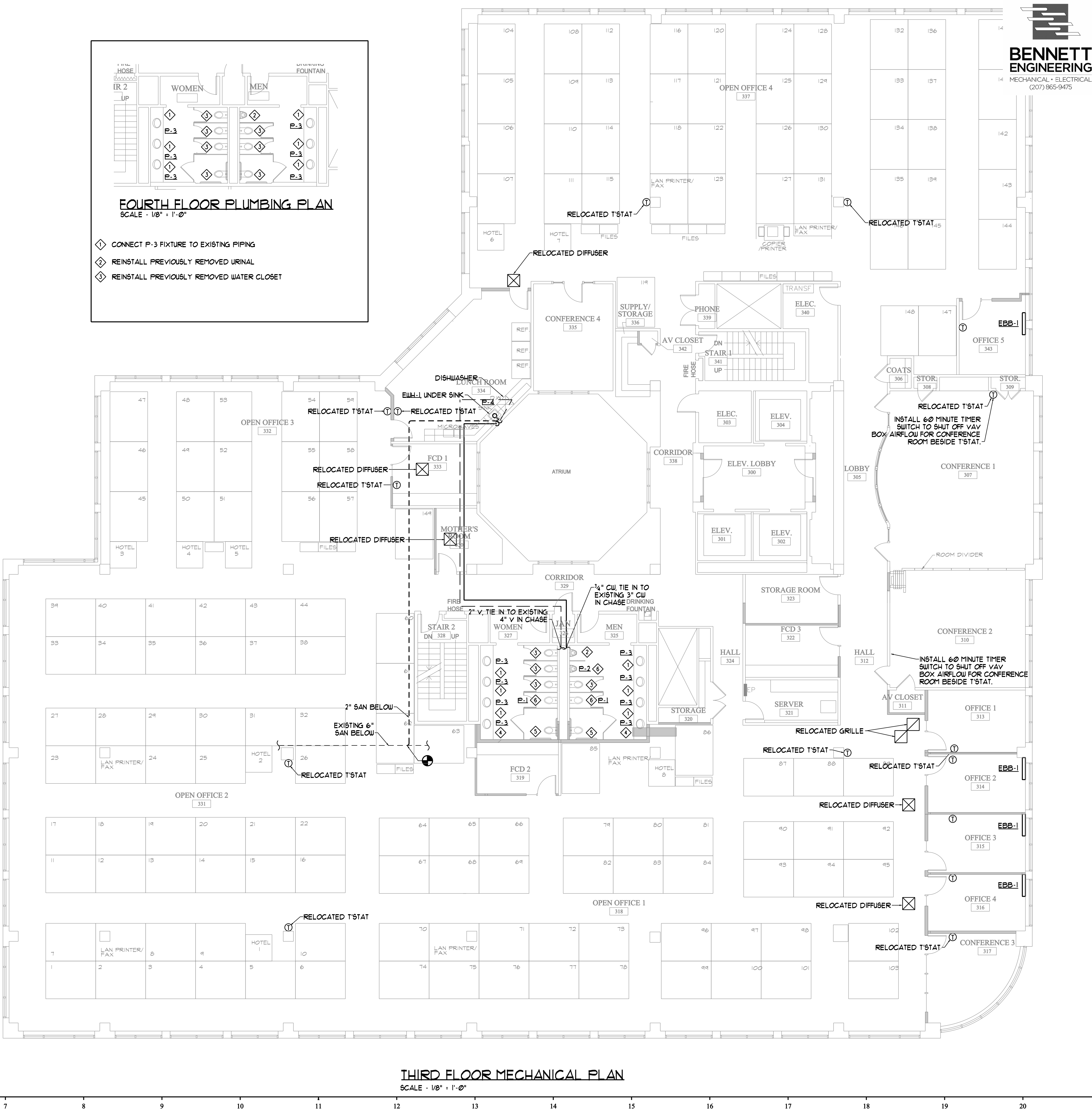
NTS

- ◇ CONNECT P-3 FIXTURE TO EXISTING PIPING
- ◇ REINSTALL PREVIOUSLY REMOVED URINAL
- ◇ REINSTALL PREVIOUSLY REMOVED WATER CLOSET
- ◇ TIE P-3 FIXTURE TO EXISTING PIPING NEARBY
- ◇ REINSTALL PREVIOUSLY REMOVED WATER CLOSET, CONNECT TO EXISTING PIPING NEARBY IN CHASE
- ◇ REINSTALL PREVIOUSLY REMOVED WATER CLOSET, CONNECT TO EXISTING PIPING NEARBY IN EXISTING CHASE

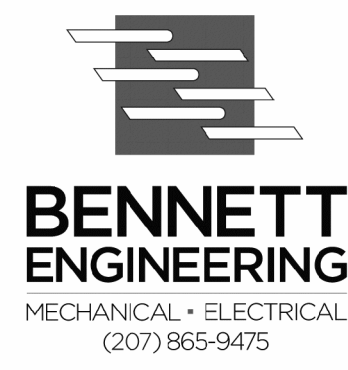
NOTE - REMOVE ALL REGISTERS, GRILLES AND DIFFUSERS (APPROXIMATELY 150 TOTAL), CLEAN AND REINSTALL IN PROPOSED CEILING GRID. PROVIDE FLEX DUCT AS REQUIRED TO ALIGN WITH GRID.



FOURTH FLOOR PLUMBING PLAN
SCALE - 1/8" = 1'-0"



THIRD FLOOR MECHANICAL PLAN
SCALE - 1/8" = 1'-0"



PRUDENTIAL
 TWO PORTLAND SQUARE THIRD FLOOR
 PORTLAND, MAINE

REVISIONS

#	DATE	DESCRIPTION

DATE:	06.08.10
PROJECT #	040510
DRAWN BY:	JMV
CHECKED BY:	SPDoel
DRAWING SCALE	AS NOTED

SHEET TITLE
THIRD FLOOR MECHANICAL PLAN

M101

© COPYRIGHT 1985-2010
REPRODUCTION OR USE OF
THIS DOCUMENT WITHOUT
THE WRITTEN PERMISSION OF
GAWRON ARCHITECTS IS PROHIBITED