

Gawron Turgeon ARCHITECTS
 29 Black Point Road
 Scarborough, Maine 04074
 www.gawronturgeon.com
 207-883-4307 ext. 307-883-0361 fax

PRUDENTIAL
 TWO PORTLAND SQUARE THIRD FLOOR
 PORTLAND, MAINE

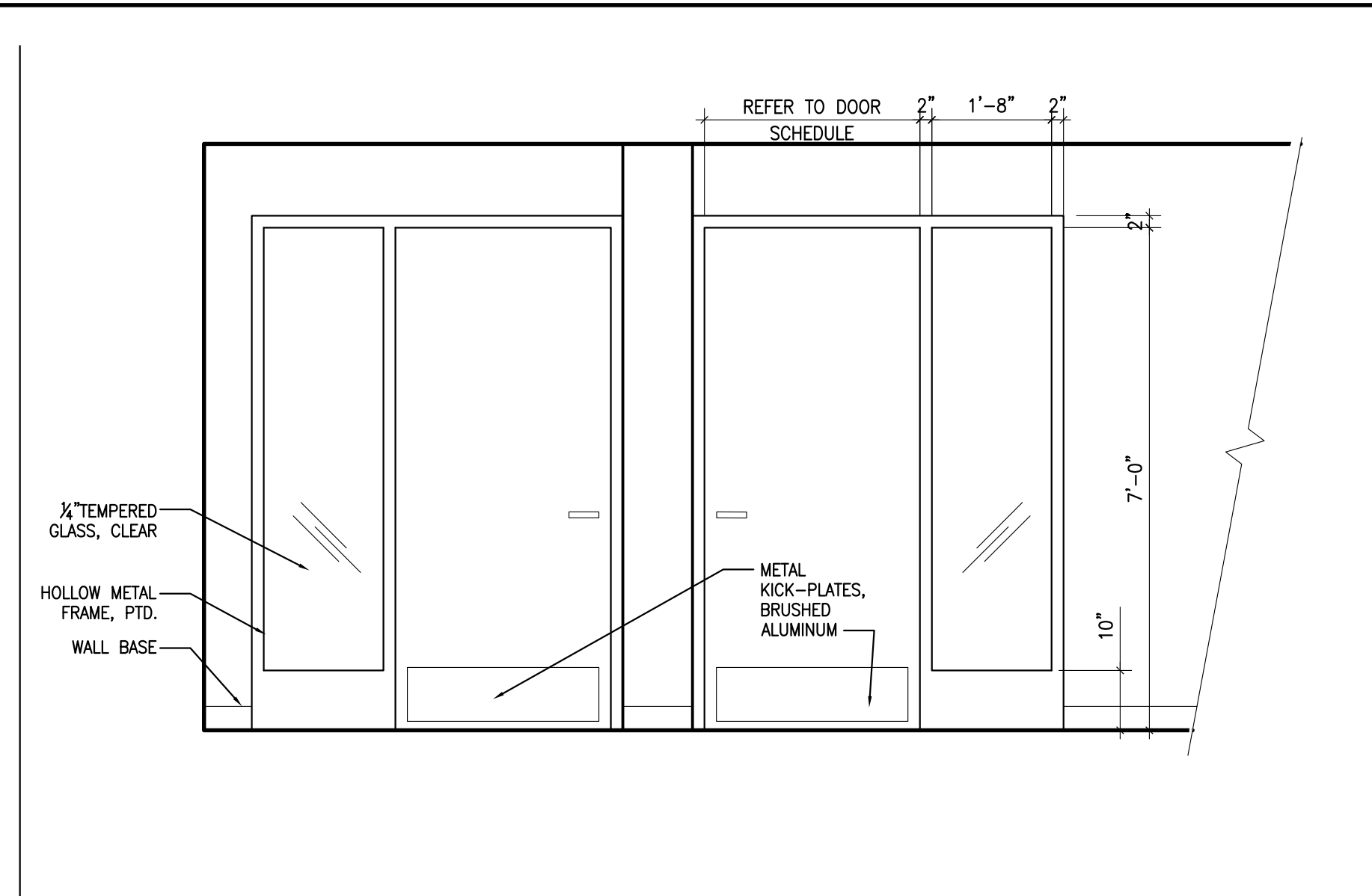
REVISIONS		
#	DATE	DESCRIPTION

DATE:	07.23.10
PROJECT #:	040510
DRAWN BY:	DLP/SCM
CHECKED BY:	MET
DRAWING SCALE:	AS NOTED

SHEET TITLE
 INTERIOR ELEVATIONS

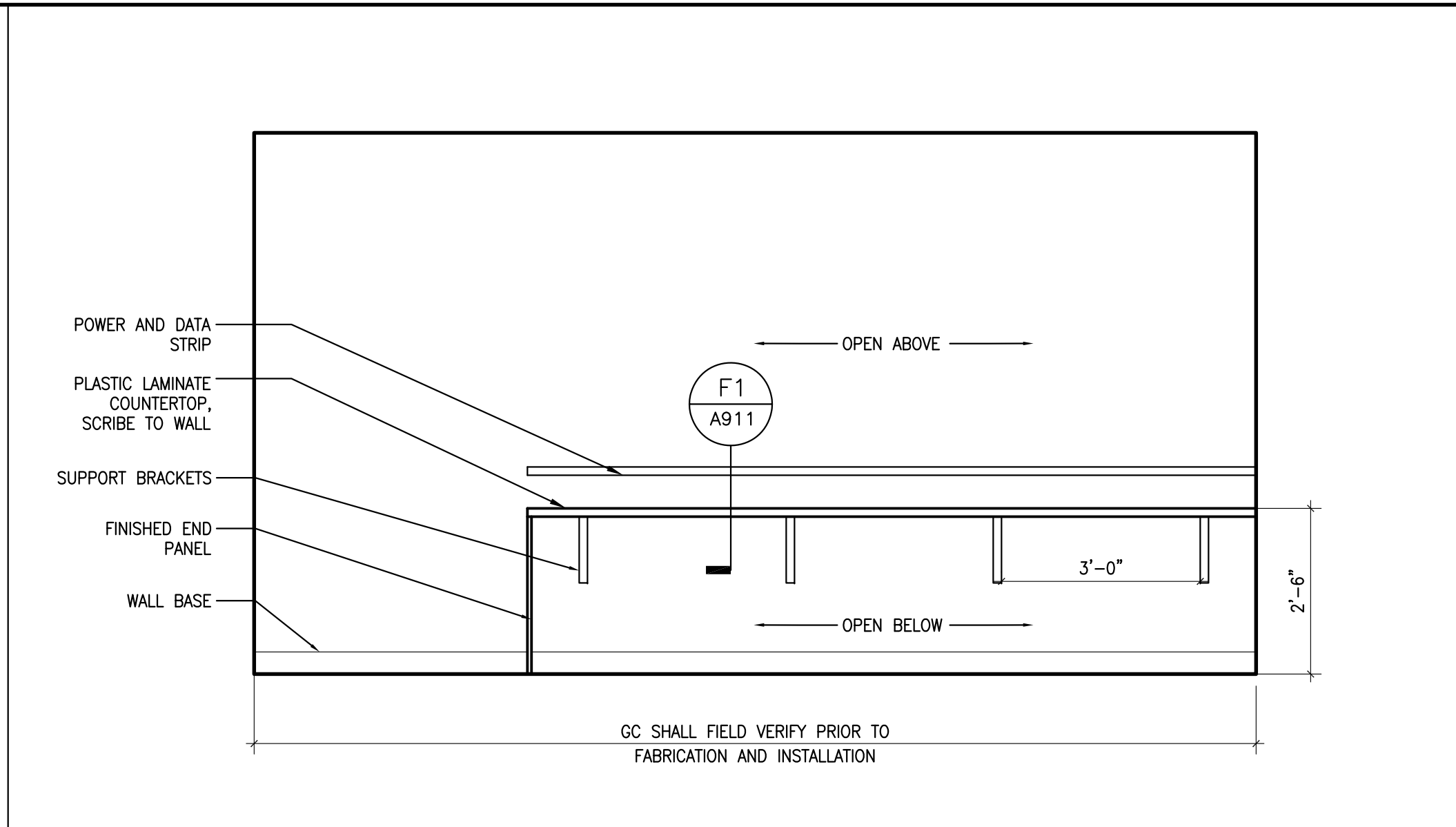
A910

© COPYRIGHT 1985-2003
 REPRODUCTION OR RESALE OF
 THIS DOCUMENT WITHOUT
 WRITTEN PERMISSION OF
 GAWRON ARCHITECTS IS PROHIBITED



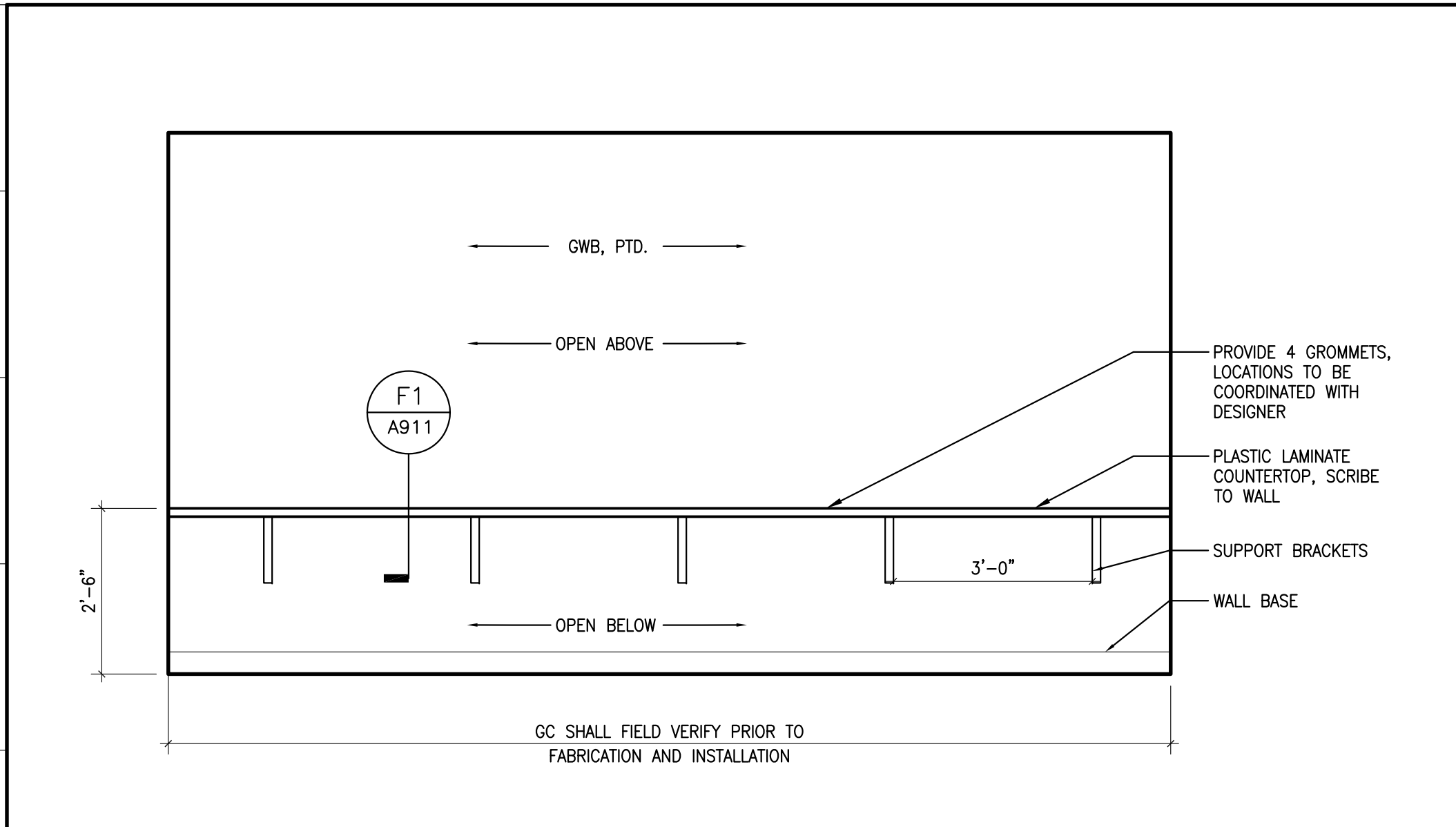
M15 HALL 312 TYPICAL

1/2"=1'-0" EAST WALL



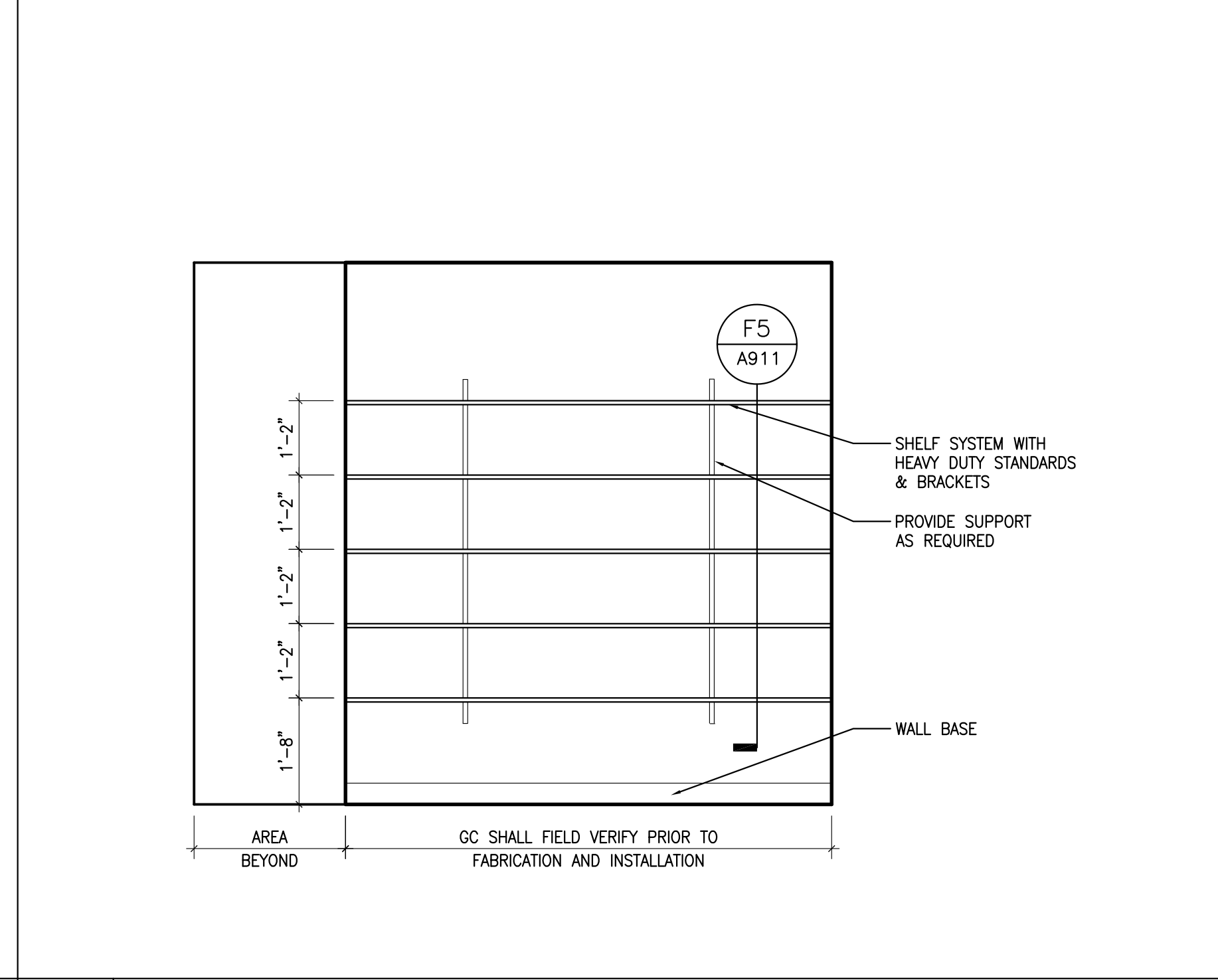
M8 SERVER 321

1/2"=1'-0" NORTH WALL



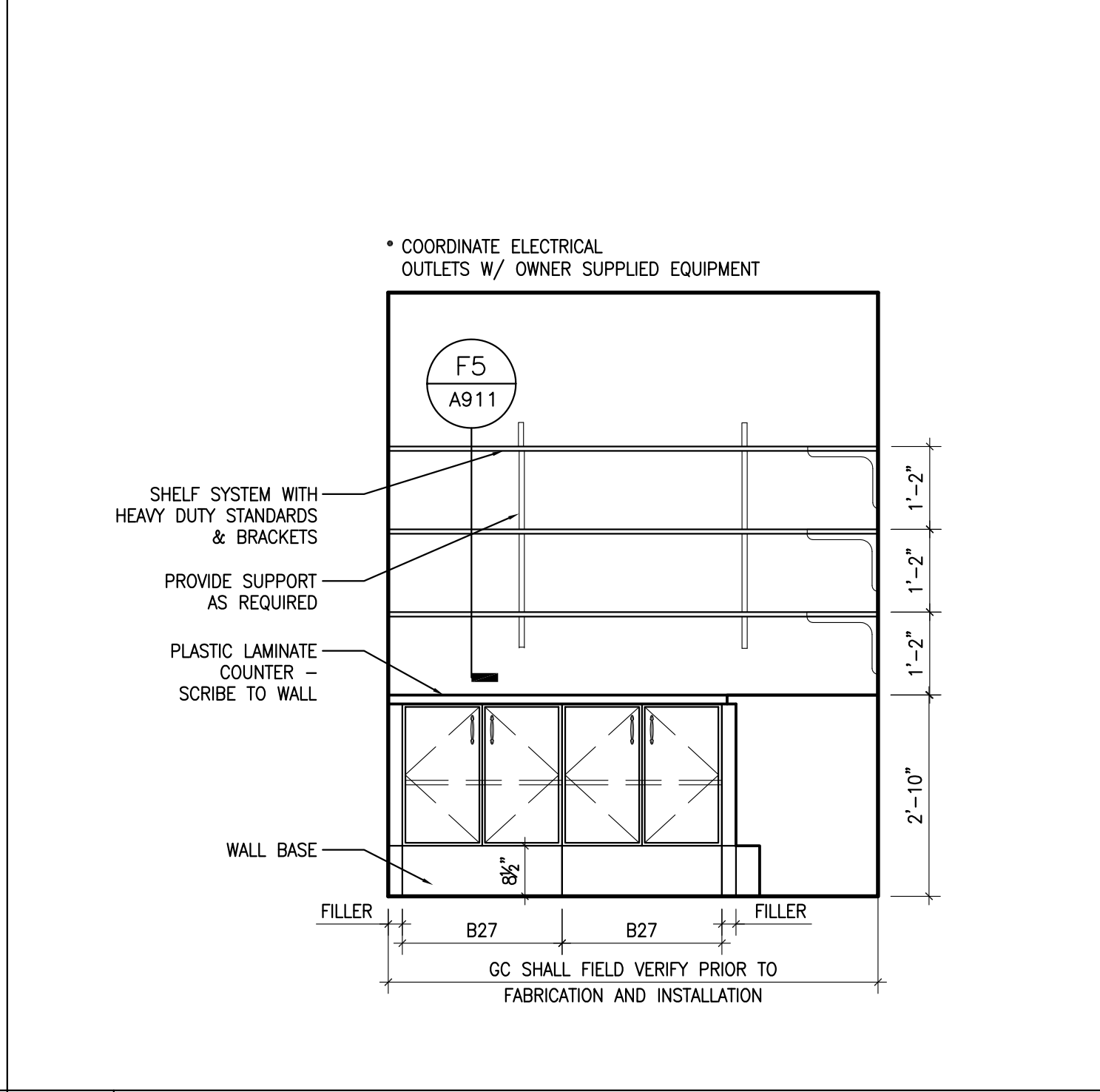
MI FCD 3 332 TYPICAL

1/2"=1'-0" SOUTH WALL



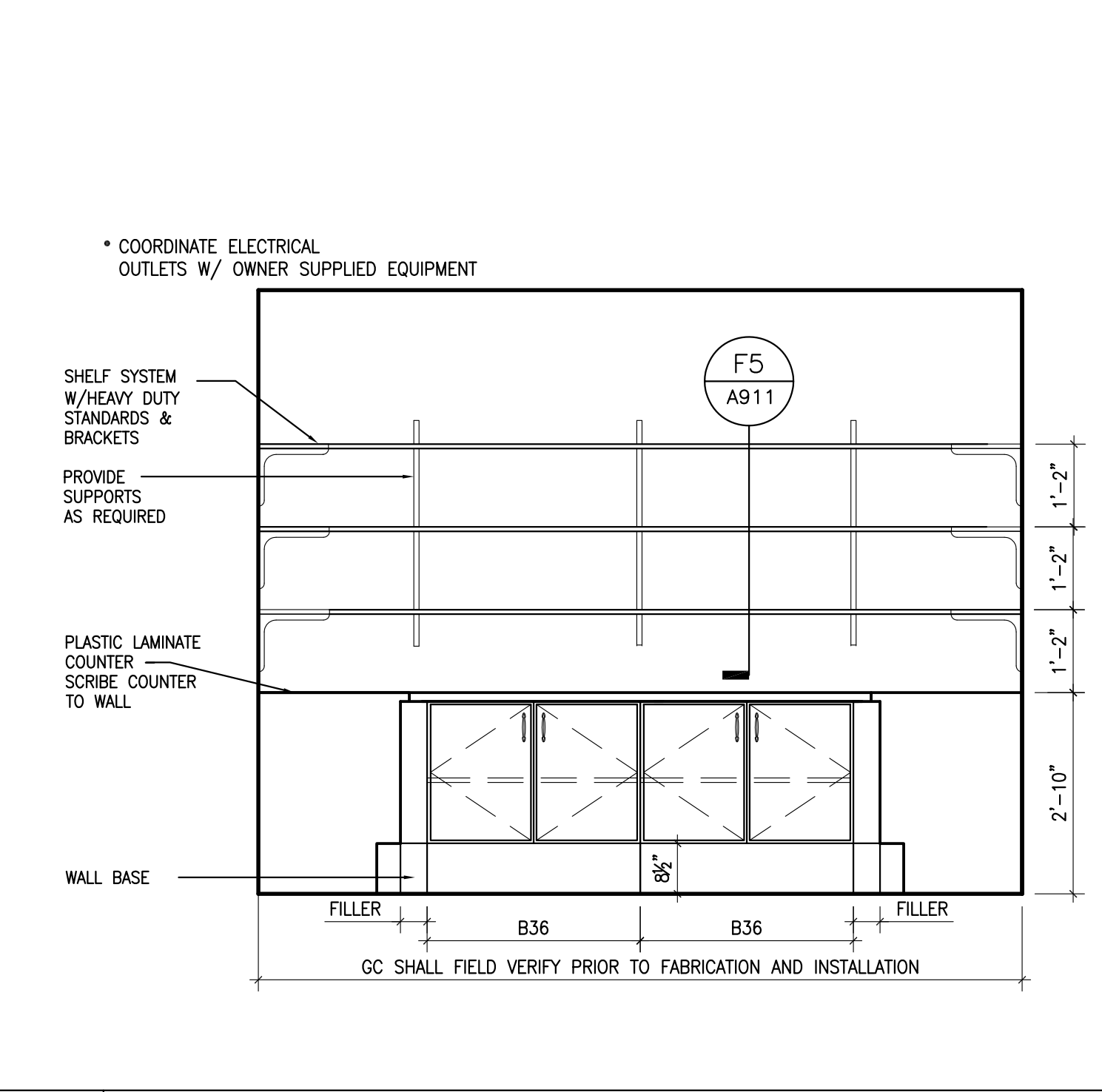
F15 STORAGE 320

1/2"=1'-0" WEST WALL



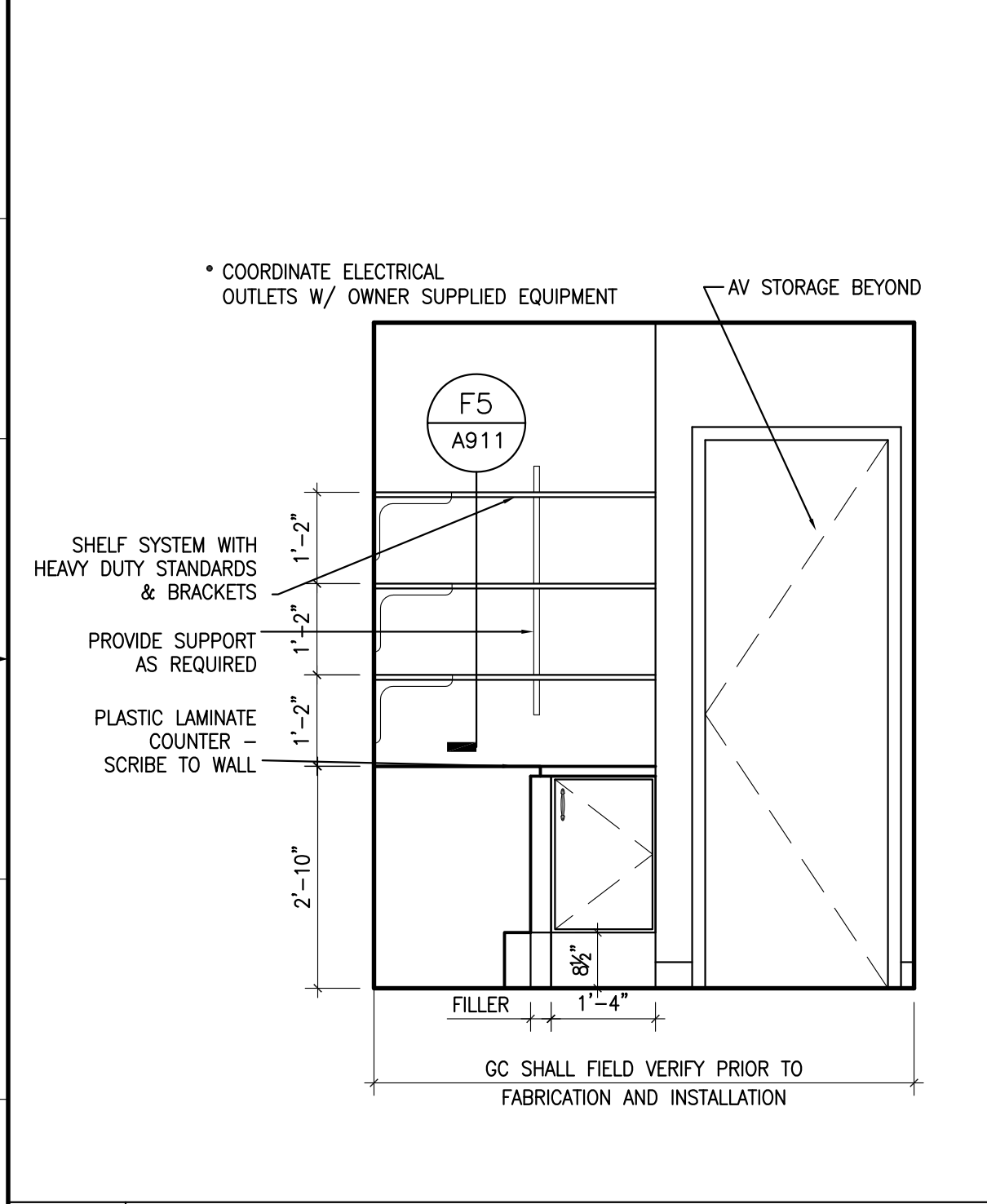
F10 SUPPLY/STORAGE 336

1/2"=1'-0" SOUTH WALL



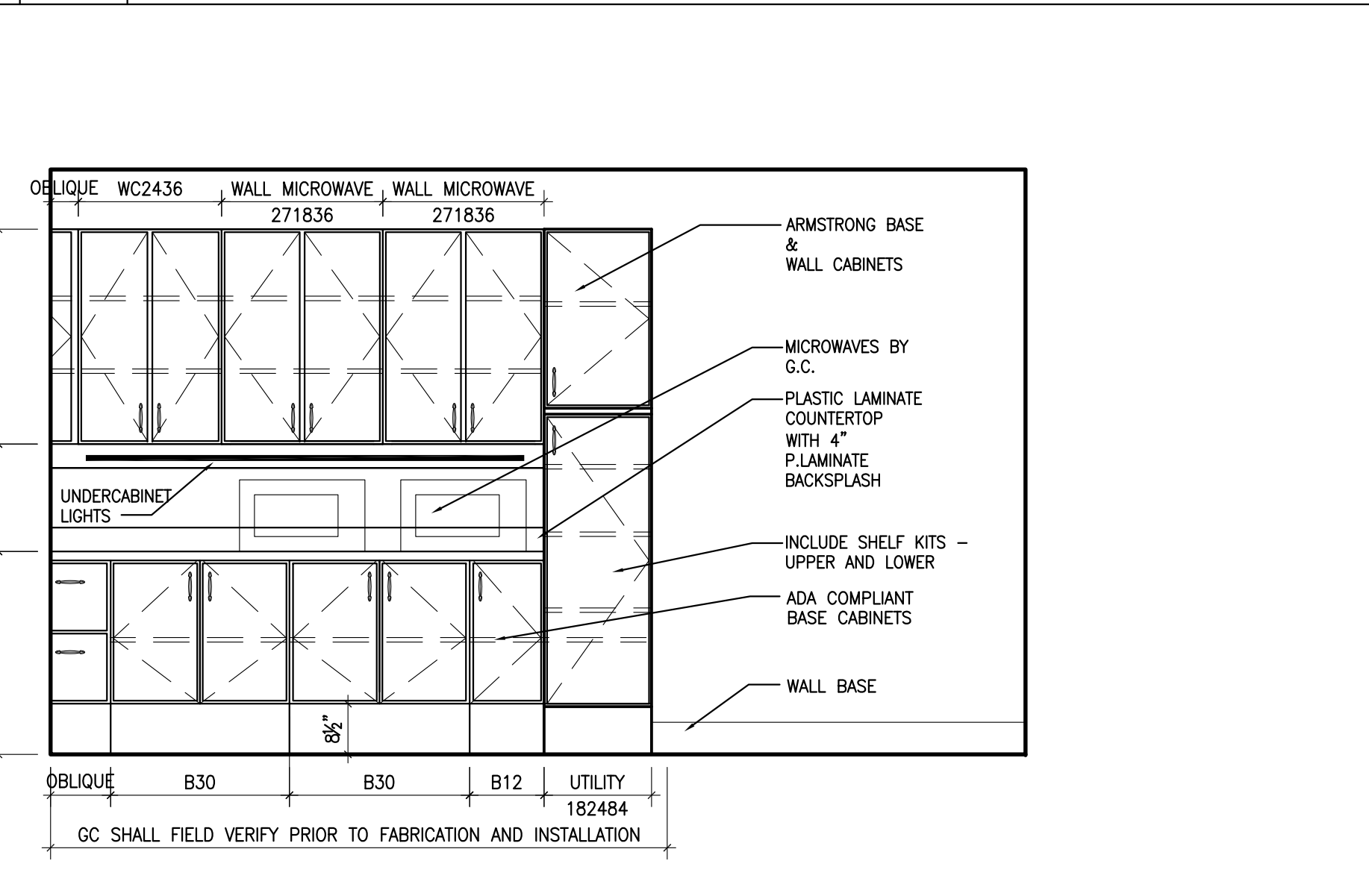
F5 SUPPLY/STORAGE 336

1/2"=1'-0" WEST WALL



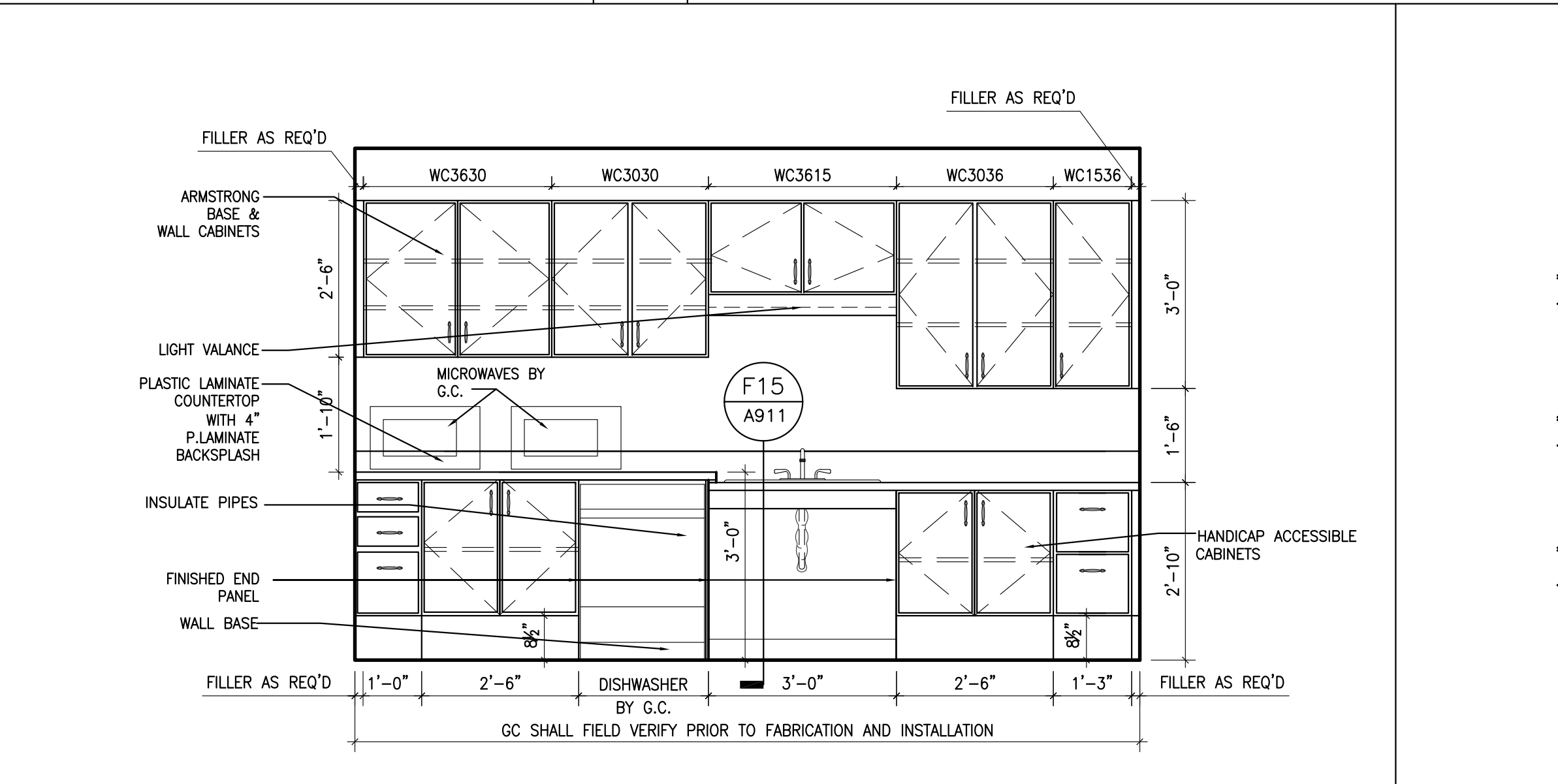
F1 SUPPLY/STORAGE 336

1/2"=1'-0" NORTH WALL



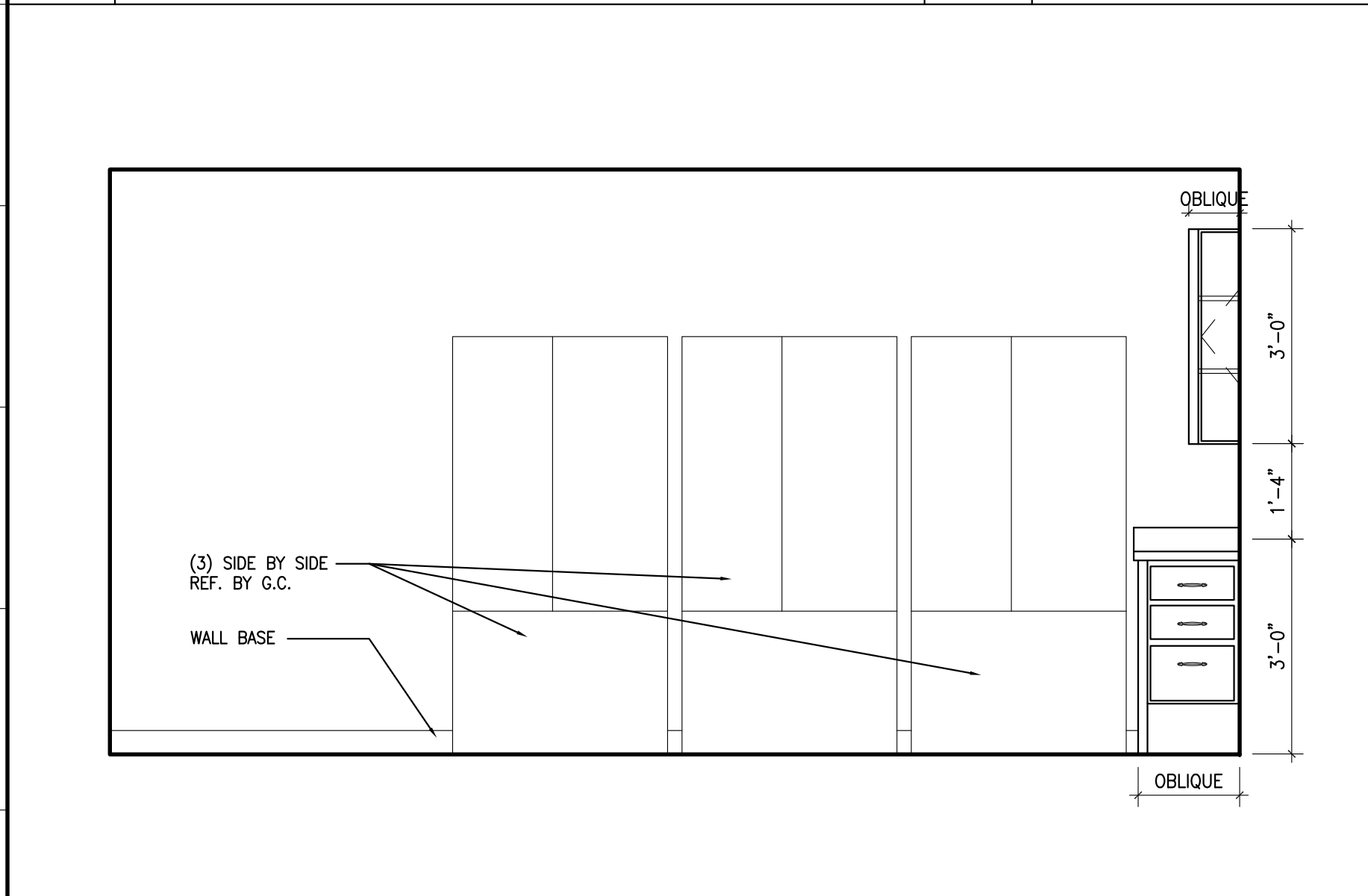
AI4 LUNCH ROOM 334

1/2"=1'-0"



A7 LUNCH ROOM 334

1/2"=1'-0"



AI LUNCH ROOM 334

1/2"=1'-0"

L:\2010\0410 - Prudential Third Floor.dwg, 04/10/2010, 10:02:00 AM, A910