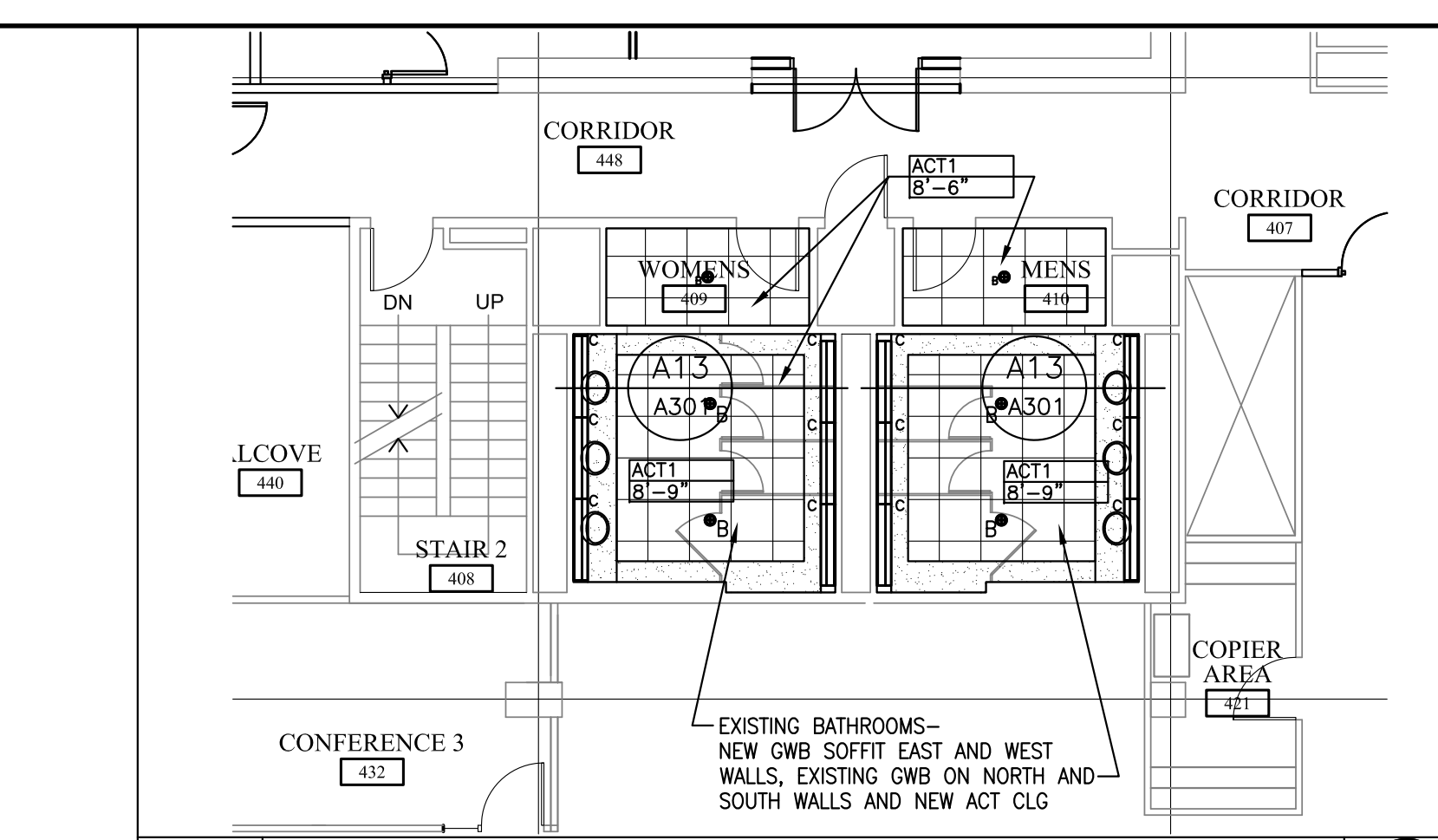


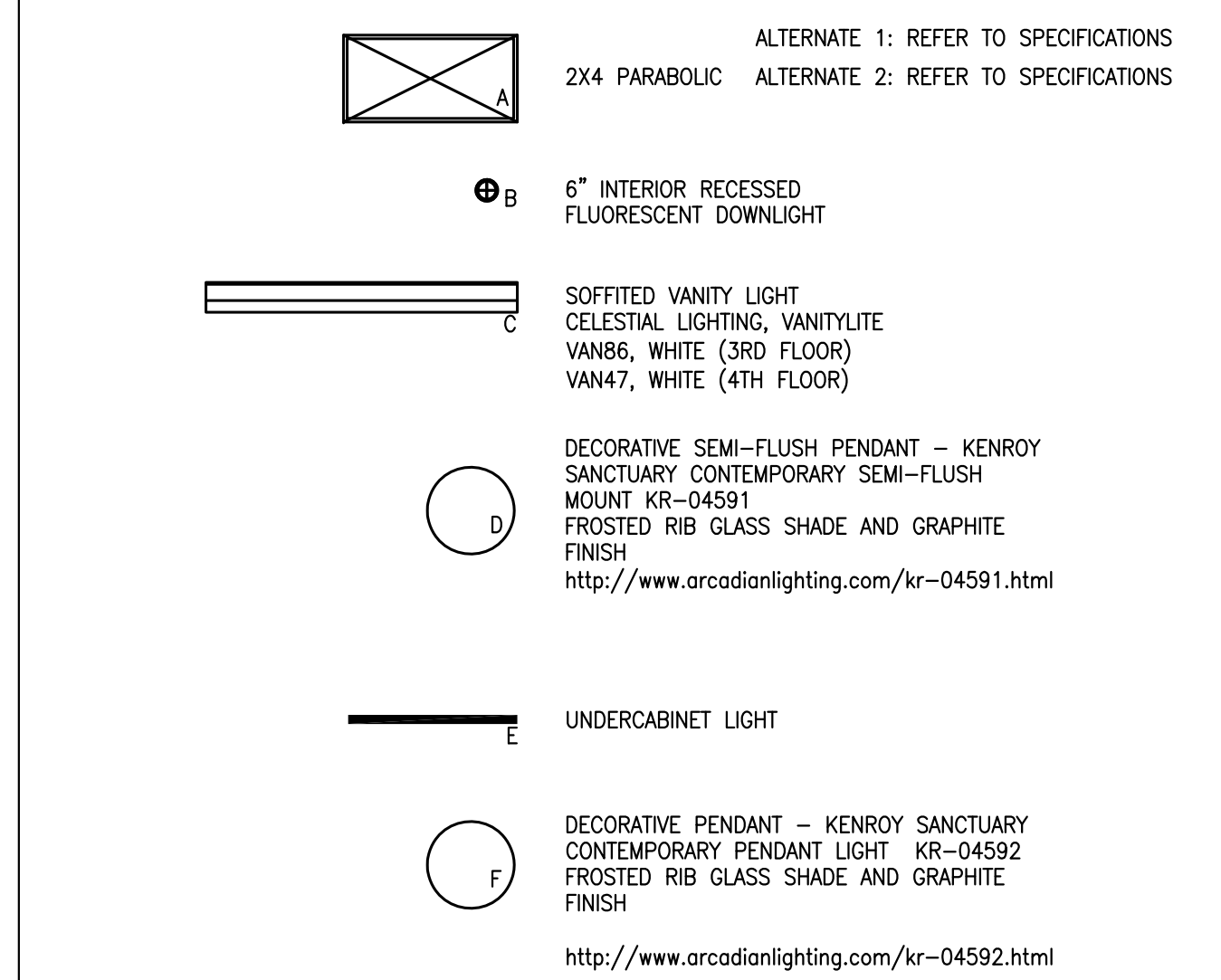
AI THIRD FLOOR REFLECTED CEILING PLAN

1/8"=1'-0"



N16 PARTIAL REFLECTED CEILING PLAN

1/8"=1'-0" 4TH FLOOR BATHROOMS



H16 LEGEND

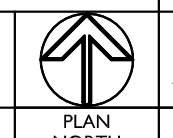
NTS LIGHT FIXTURES

ACT1 - ARMSTRONG CEILING, DUNE 18" ANGLED REGULAR 24x24x8"
 ACT2 - MATCH EXISTING 2x2 ACOUSTICAL CEILING TILE & GRID SYSTEM

F16 LEGEND

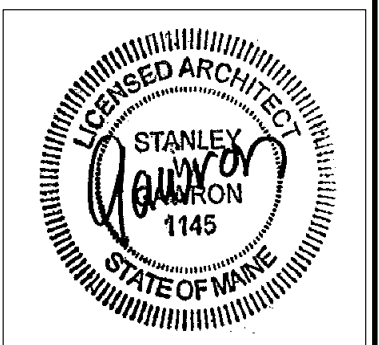
NTS ACOUSTICAL CEILING SYSTEM

- INTERIOR FIXTURE LEGEND FOR DESIGN INTENT ONLY. REFER TO ELECTRICAL DRAWINGS FOR LIGHT FIXTURE TYPES AND CIRCUITING.
- MECHANICAL SUBCONTRACTOR TO VERIFY SIZE AND LOCATION OF ANY MECHANICAL REGISTERS WITH ARCHITECT PRIOR TO CONSTRUCTION. LIGHTING LOCATIONS SHALL TAKE PRECEDENCE.
- SWITCH ALL OFFICES INDEPENDENTLY. DOUBLE SWITCH ALL CONFERENCE ROOMS.
- INDEPENDENTLY AND DOUBLE SWITCH LAMPS OF 2x4 RT5 FIXTURES.
- INDEPENDENTLY SWITCH DECORATIVE PENDANT LIGHTS.
- ELECTRICAL CONTRACTOR SHALL COORDINATE OWNER SUPPLIED TELEPHONE & DATA BOXES WITH LOCATIONS OF OUTLETS.
- G.C. TO COORDINATE ALL SPECIALTY EQUIPMENT WITH TENANTS VENDOR.
- G.C. TO SALVAGE EXISTING PARABOLIC FOR BUILDING OWNER. NEW FIXTURES SHALL BE USED AS INDICATED ON REFLECTED CEILING PLAN.
- LUNCHROOM 334 - DOUBLE SWITCH LAMPS SO THAT 3 LAMPS ARE ON ONE SWITCH AND 2 LAMPS ARE ON ONE SWITCH.
- PROVIDE A SEPARATE SWITCH FOR AV PROJECTION.
- INDEPENDENTLY SWITCH RECESSED CANS AT CONFERENCE 1 307, CONFERENCE ROOM 2 310 AND CONFERENCE ROOM 4 335.
- PROVIDE DIMMER SWITCHES FOR ALL CONFERENCE ROOMS AND MOTHER'S ROOM 330.
- REVIEW LIGHTING SPACING WITH EXISTING DIFFUSER LOCATIONS AND SPRINKLER HEADS - VERIFY ANY DISCREPANCIES WITH ARCHITECT



A16 GENERAL NOTES

NTS REFLECTED CEILING PLAN



Gawron Turgeon ARCHITECTS
 29 Black Point Road
 Scarborough, Maine 04074
 www.gawronturgeon.com
 207-883-4307 or 207-883-0361 fax

PRUDENTIAL
 TWO PORTLAND SQUARE THIRD FLOOR
 PORTLAND, MAINE

REVISIONS		
#	DATE	DESCRIPTION

DATE:	07.23.10
PROJECT #	040510
DRAWN BY:	DLP
CHECKED BY:	MET
DRAWING SCALE	AS NOTED

SHEET TITLE
 THIRD FLOOR REFLECTED CEILING PLAN
 PARTIAL FOURTH FLOOR REFLECTED CEILING PLAN

A300

© COPYRIGHT 1985-2003
 REPRODUCTION OR USE OF
 THIS DOCUMENT WITHOUT
 WRITTEN PERMISSION OF
 GAWRON ARCHITECTS IS PROHIBITED