

**GAWRON  
TURGEON  
ARCHITECTS**

29 Black Point Road  
Scarborough, ME 04074  
www.gawronturgeon.com  
Tel. 207.883.6307  
Fax. 207.883.0361

**PRUDENTIAL**  
PORTLAND, MAINE

**INSULATION NOTES**

1. Insulate supply ductwork with 1-1/2" ductwrap, F5K meeting NFPA 92A 4 B, @ 19 Btu-in/hr-ft<sup>2</sup>F at 15°F mean temperature.
2. Insulate domestic water piping with 1" fiberglass insulation with ASJ, @ 23 Btu-in/hr-ft<sup>2</sup>F at 150°F mean temperature.
3. Insulate condensate piping, Refrigerant Liquid (RL) and Refrigerant Suction (RS) piping with 1/2" flexible unicellular insulation.
4. Insulation shall be suitable for installation in a plenum.
5. Submit insulation materials for review by the Engineer.

**PLUMBING NOTES**

1. Domestic water piping shall be Type L copper with cast bronze or wrought copper fittings.
2. Sanitary piping shall be service weight cast iron or No Hub cast iron. No Hub fittings shall be Clamp-All HI-TORQ125 with 304SS housing, ASTM C 564 neoprene gasket, shall maintain 15 PSI hydrostatic seal and shall comply with F14620, IBC and local codes and requirements.
3. Vent piping shall be schedule 40 PVC.
4. (P-1) ADA Kitchen Sink, Single Bowl, Elkay LRAD251 stainless steel, 25"x21 1/2"x6" deep overall size, 4 faucet holes on 4" centers, fully sound deadened. Drain shall be located in upper left or right corner of bowl.
  - a. Faucet: Chicago Model 2301-0, single handle, 2.0 gpm aerator, 10" spout, polished chrome finish ceramic control cartridge, hose and spray.
  - b. Strainer: Dayton Model D-125 with removable basket and neoprene stopper.
  - c. Sink insulation shall be in compliance with the ADA guidelines.
5. Insulate exposed supply and waste piping at handicapped accessible sinks with fully molded insulation kit, McGuire Products ProLub, 3/16" thick closed vinyl with anti-microbial additive, 107 Btu-in/hr-ft<sup>2</sup>F thermal conductivity, white color.
6. Submit piping materials, accessories and fixtures for review by the Engineer.

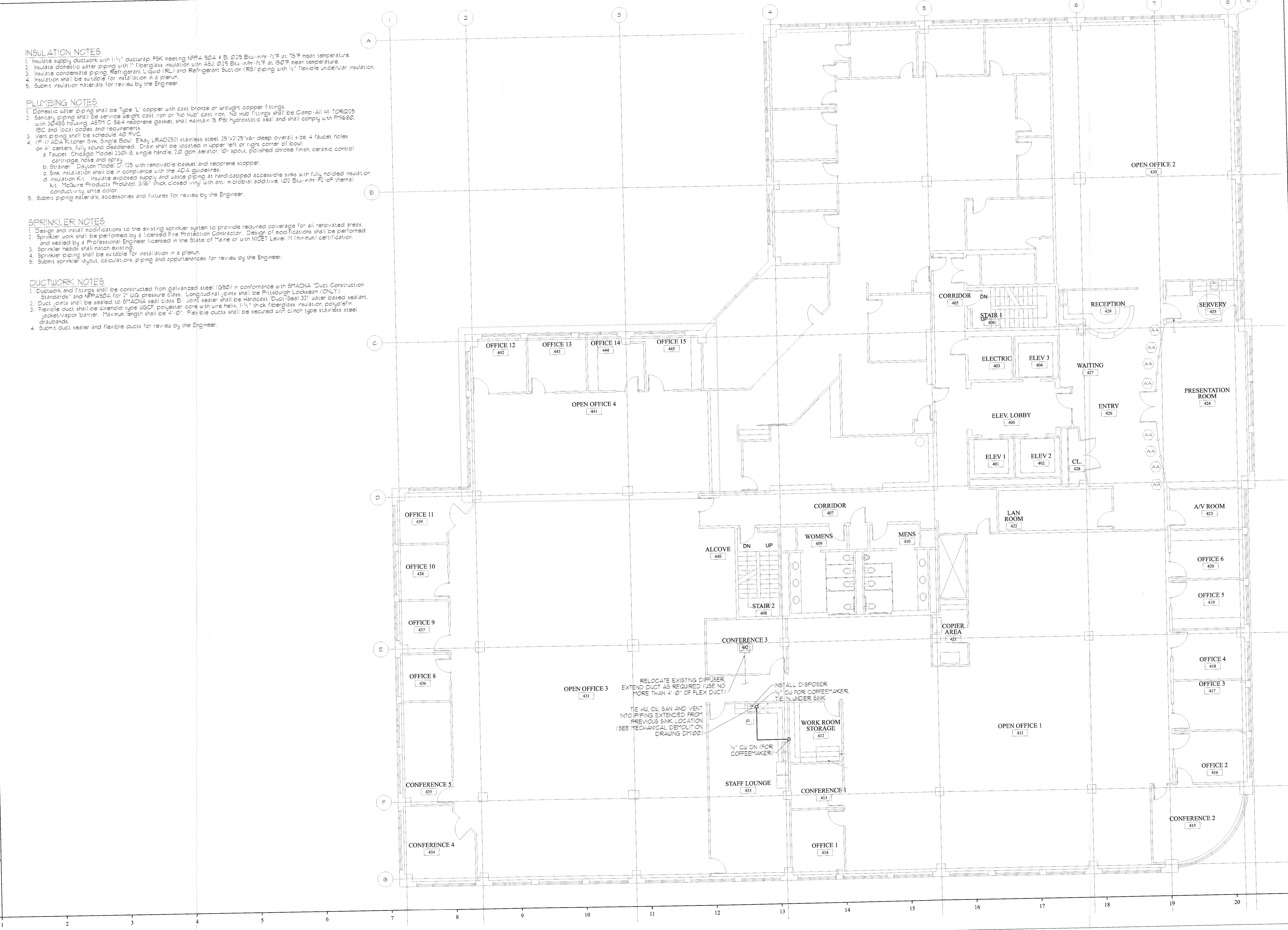
**SPRINKLER NOTES**

1. Design and install modifications to the existing sprinkler system to provide required coverage for all renovated areas.
2. Sprinkler work shall be performed by a licensed Fire Protection Contractor. Design of modifications shall be performed and sealed by a Professional Engineer licensed in the State of Maine or with NICET Level III (minimum) certification.
3. Sprinkler heads shall match existing.
4. Sprinkler piping shall be suitable for installation in a plenum.
5. Submit sprinkler layout, calculations, piping and appurtenances for review by the Engineer.

**DUCTWORK NOTES**

1. Ductwork and fittings shall be constructed from galvanized steel (G20) in conformance with SMACNA Duct Construction Standards and NFPA 92A for 2" ULs pressure class. Longitudinal joints shall be Pittsburgh Lockseal (ONLY).
2. Duct joints shall be sealed to SMACNA class B. Joint sealer shall be Harcoat Duct-Seal 321 water based sealant.
3. Flexible duct shall be wire-mesh type WGF, polyester core with wire helix, 1-1/2" thick fiberglass insulation, polyethylene jacket/vapor barrier. Maximum length shall be 4'-0". Flexible ducts shall be secured with clinch type stainless steel drawbands.
4. Submit duct sealer and flexible ducts for review by the Engineer.

R  
Q  
P  
O  
N  
M  
L  
K  
J  
I  
H  
G  
F  
E  
D  
C  
B  
A



RELOCATE EXISTING DIFFUSER  
EXTEND DUCT AS REQUIRED (USE NO MORE THAN 4'-0" OF FLEX DUCT)

INSTALL DISPOSER  
1/2" CW FOR COFFEE MAKER  
TIE IN UNDER SINK

TIE HW, CW, SAN AND VENT  
INTO PIPING EXTENDED FROM  
PREVIOUS SINK LOCATION  
(SEE MECHANICAL DEMOLITION  
DRAWING DM100)

1/2" CW DN (FOR  
COFFEE MAKER)

**REVISIONS**

#	DATE	DESCRIPTION

DATE:	9-5-08
PROJECT #:	110807
DRAWN BY:	JMV
CHECKED BY:	SPDoel
DRAWING SCALE:	1/8"=1'-0"

**SHEET TITLE**  
FOURTH FLOOR  
MECHANICAL PLAN

**M100**

© COPYRIGHT 1985-2003  
REPRODUCTION OR RELEASE OF  
THIS DOCUMENT WITHOUT  
WRITTEN PERMISSION OF  
GAWRON ARCHITECTS IS PROHIBITED