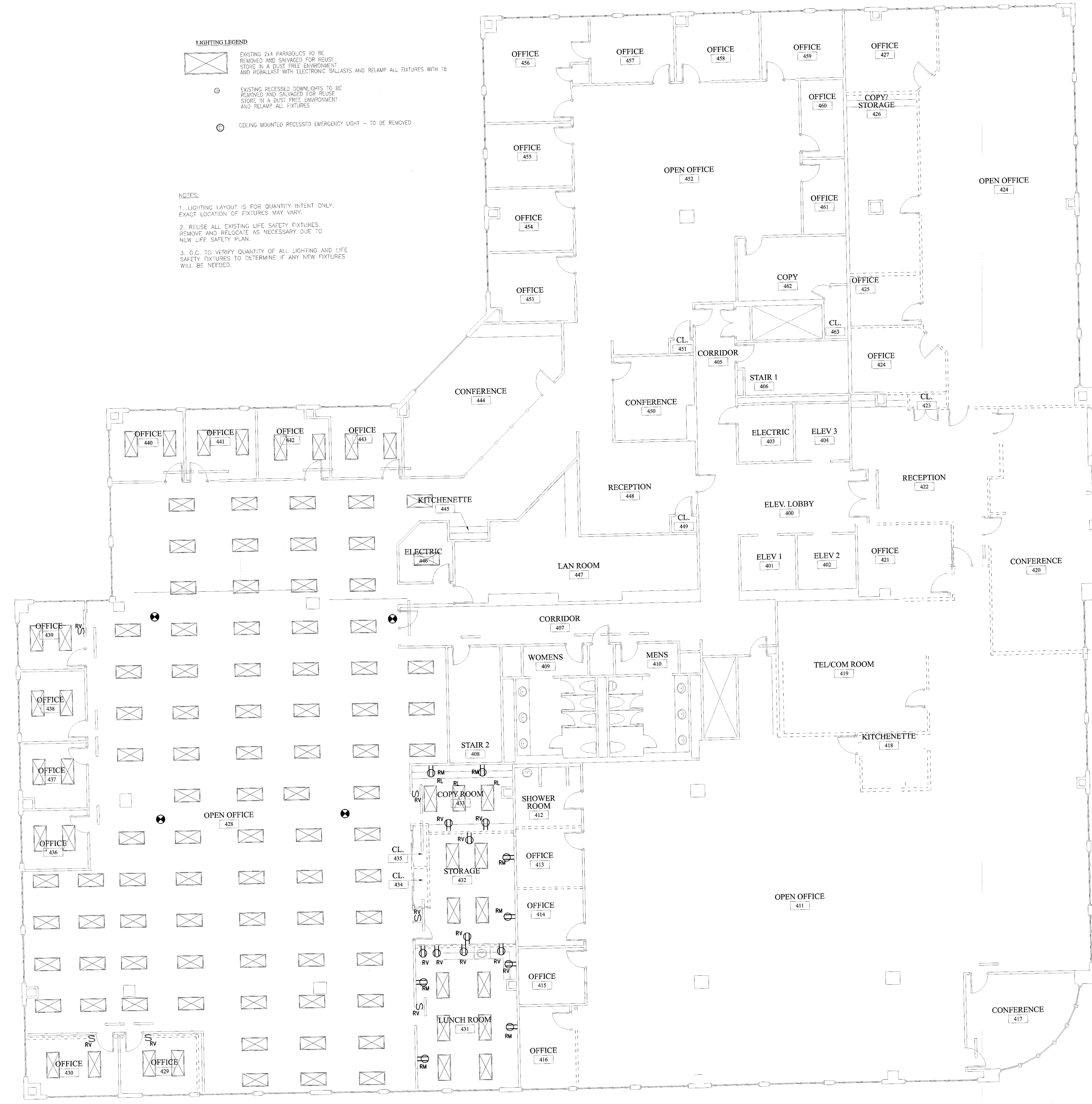
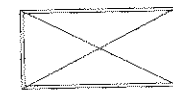


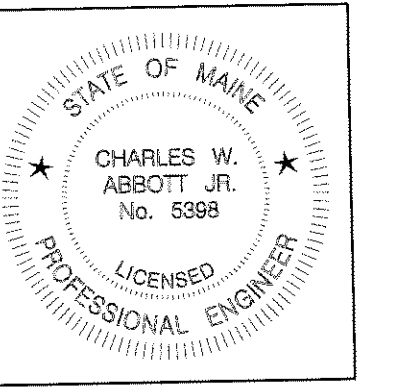


R
Q
P
O
N
M
L
K
J
H
G
F
E
D
C
B
A



- LIGHTING LEGEND**
-  EXISTING 2x4 PARABOLICS TO BE REMOVED AND SALVAGED FOR REUSE. STORE IN A DUST FREE ENVIRONMENT AND REGALLAST WITH ELECTRONIC BALLASTS AND RELAMP ALL FIXTURES WITH T8
 -  EXISTING RECESSED DOWNLIGHTS TO BE REMOVED AND SALVAGED FOR REUSE. STORE IN A DUST FREE ENVIRONMENT AND RELAMP ALL FIXTURES
 -  CEILING MOUNTED RECESSED EMERGENCY LIGHT - TO BE REMOVED

- NOTES:**
1. LIGHTING LAYOUT IS FOR QUANTITY INTENT ONLY. EXACT LOCATION OF FIXTURES MAY VARY.
 2. REUSE ALL EXISTING LIFE SAFETY FIXTURES. REMOVE AND RELOCATE AS NECESSARY DUE TO NEW LIFE SAFETY PLAN.
 3. O.C. TO VERIFY QUANTITY OF ALL LIGHTING AND LIFE SAFETY FIXTURES TO DETERMINE IF ANY NEW FIXTURES WILL BE NEEDED.



GAWRON TURGEON ARCHITECTS
 29 Black Point Road
 Scarborough, ME 04074
 www.gawronturgeon.com
 Tel. 207. 883. 6307
 Fax. 207. 883. 0361

PRUDENTIAL
 PORTLAND, MAINE

REVISIONS		
#	DATE	DESCRIPTION

DATE:	9-5-08
PROJECT #	110807
DRAWN BY:	SPD
CHECKED BY:	WSBJR/CWA
DRAWING SCALE	1/8"=1'-0"

SHEET TITLE
 ELECTRICAL DEMO.
 FOURTH FLOOR PLAN

DE100

© COPYRIGHT 1985-2003
 REPRODUCTION OR RESALE OF
 THIS DOCUMENT WITHOUT THE
 WRITTEN PERMISSION OF
 GAWRON ARCHITECTS IS PROHIBITED