

GAWRON TURGEON ARCHITECTS
 29 Black Point Road
 Scarborough, ME 04074
 www.gawronturgeson.com
 Tel. 207.883.6307
 Fax. 207.883.0361

PRUDENTIAL
 TWO PORTLAND SQUARE FOURTH FLOOR
 PORTLAND, MAINE

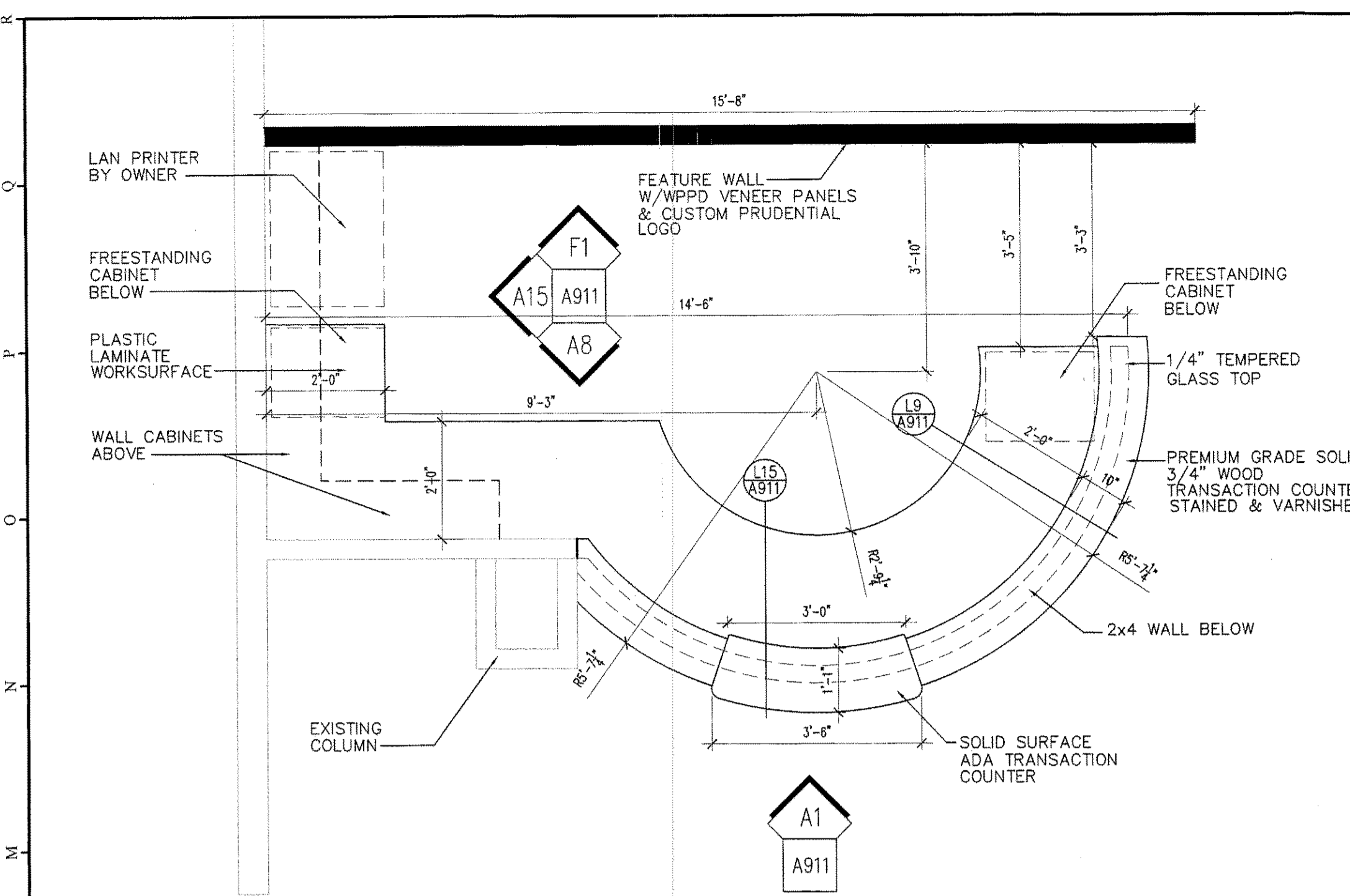
REVISIONS		
#	DATE	DESCRIPTION
1	02.11.08	RE-ISSUED FOR CONSTRUCTION
2	09.04.08	RE-ISSUED FOR CONSTRUCTION EXPANSION OF PHASE 3

DATE:	09.04.08
PROJECT #	110807
DRAWN BY:	DLP
CHECKED BY:	MET
DRAWING SCALE	AS NOTED

SHEET TITLE
 INTERIOR ELEVATIONS

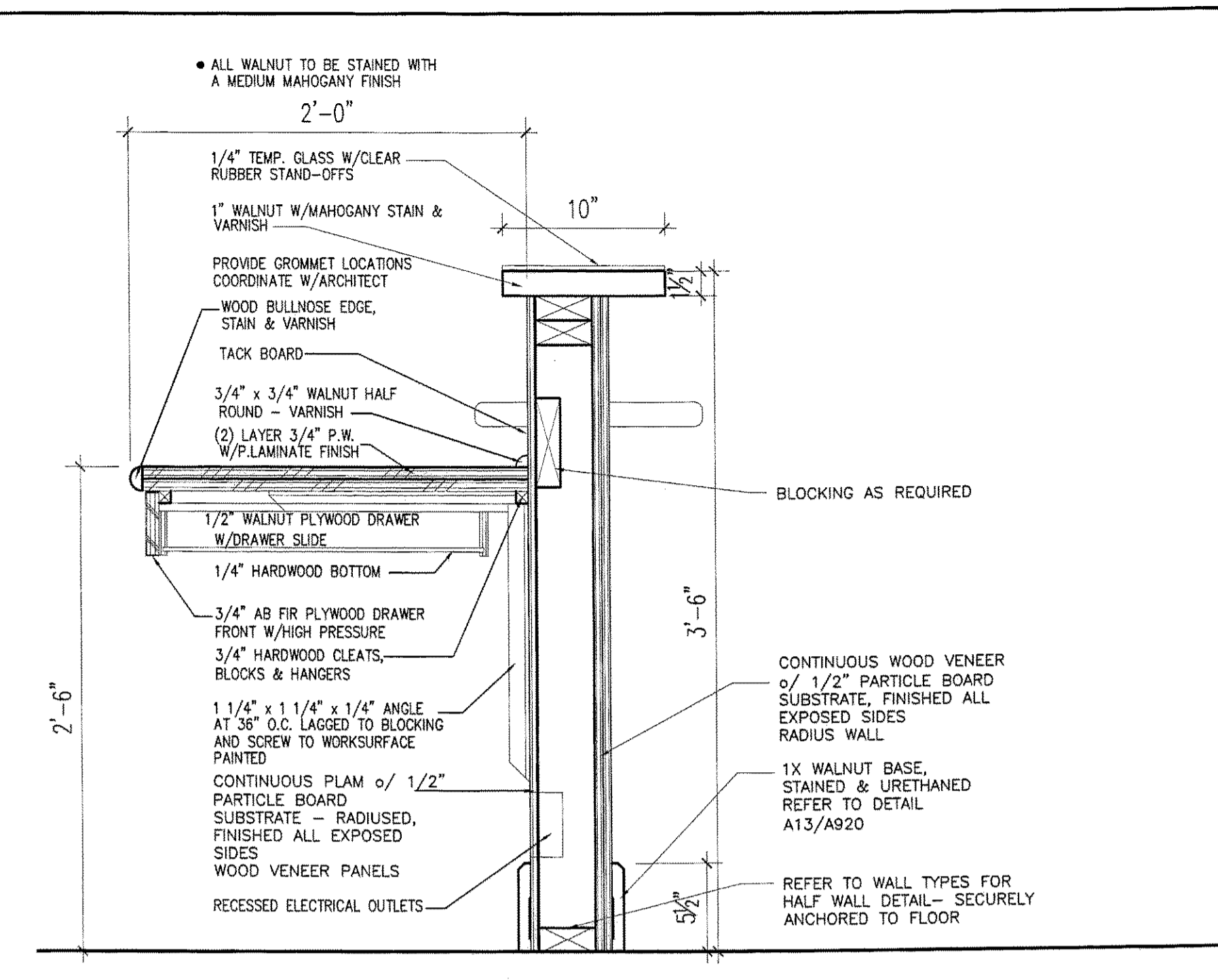
A911

© COPYRIGHT 1985-2003
 REPRODUCTION OR RESALE OF THIS DOCUMENT WITHOUT WRITTEN PERMISSION OF GAWRON ARCHITECTS IS PROHIBITED



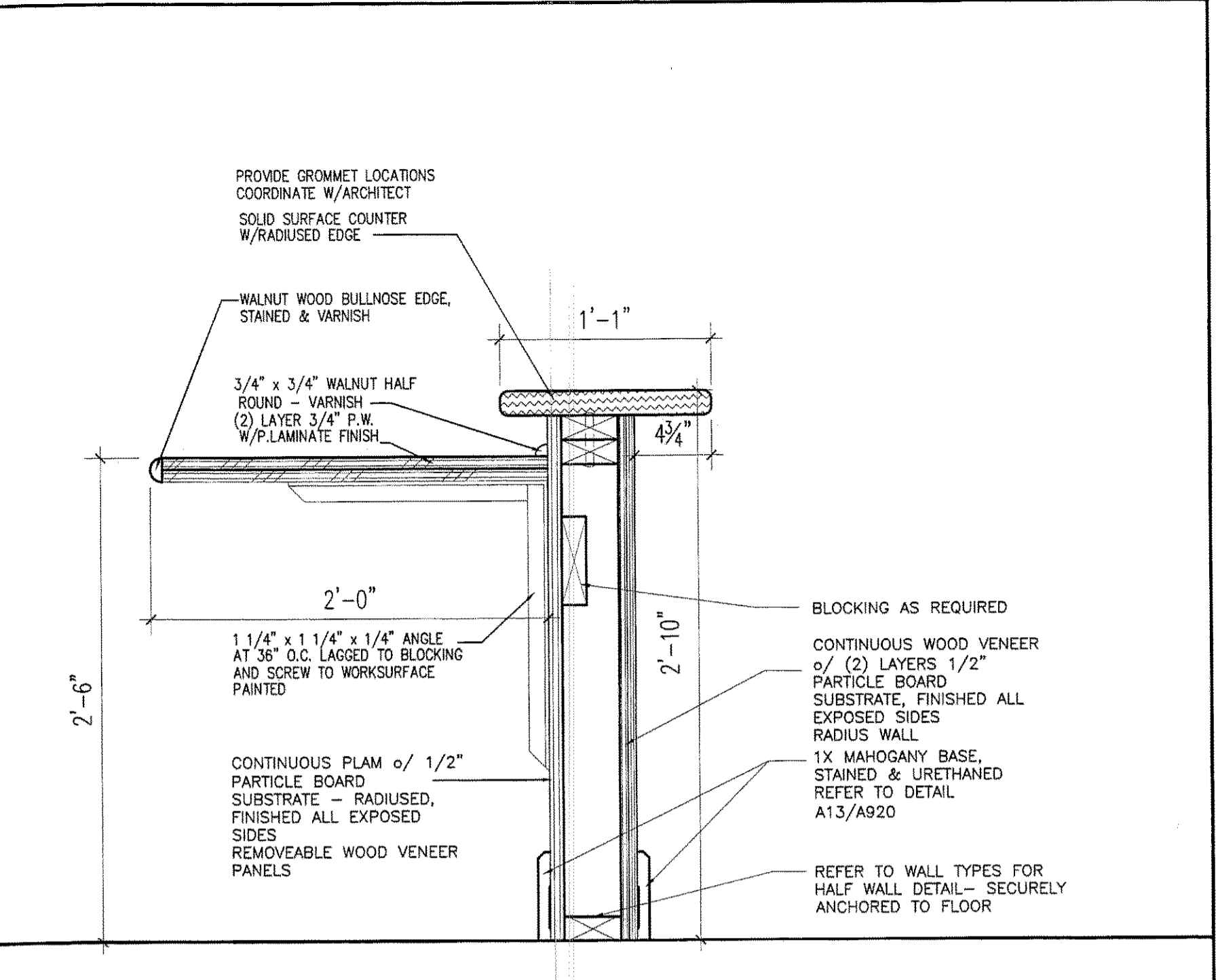
L1 RECEPTION 429

1/2"=1'-0"



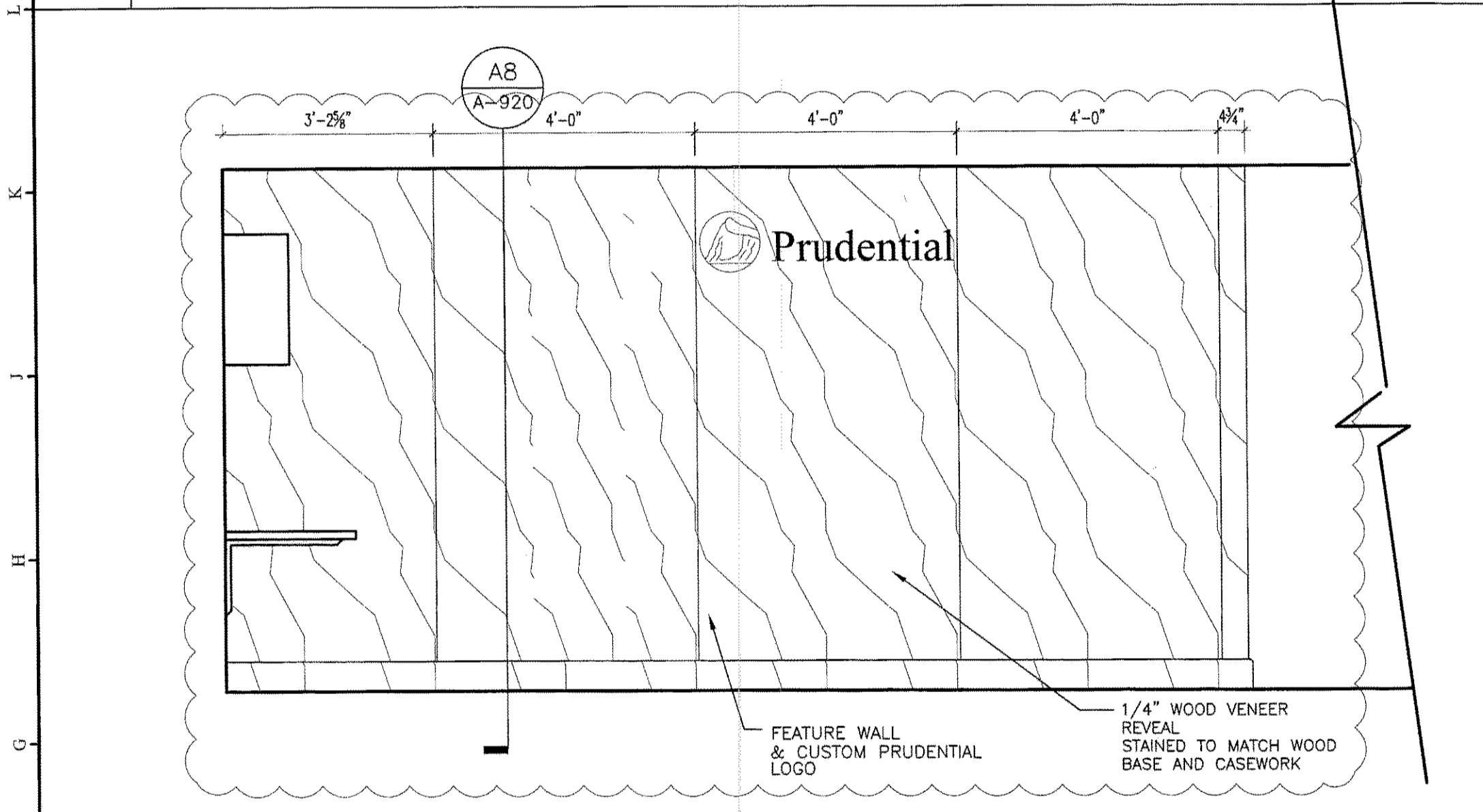
L9 SECTION THRU RECEPTION DESK

1 1/2"=1'-0"



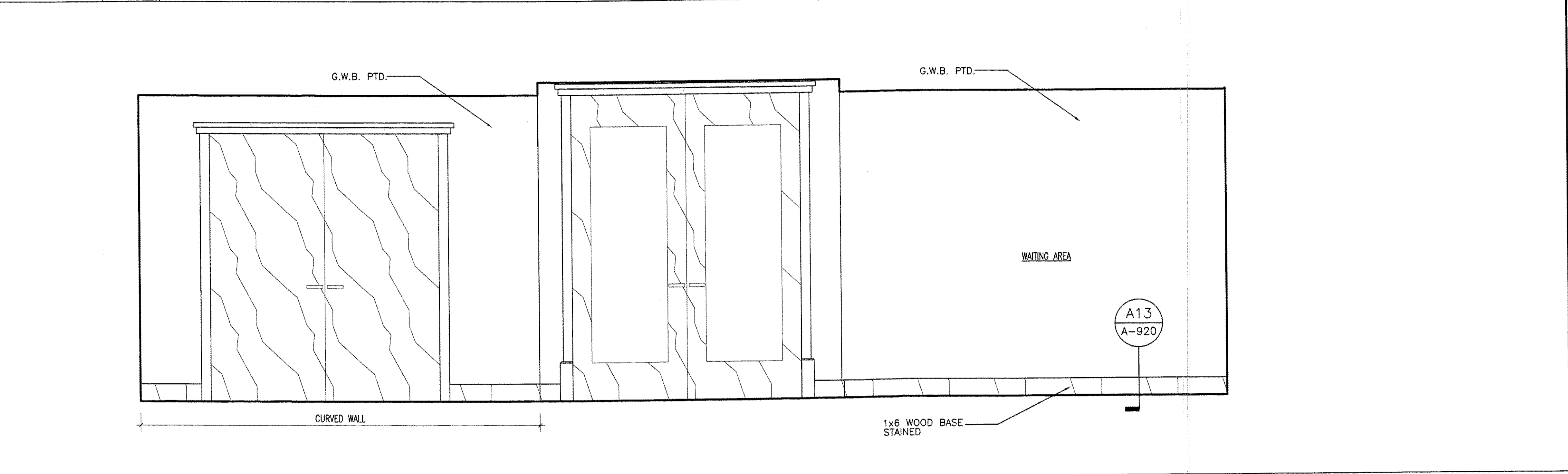
L15 SECTION THRU RECEPTION DESK

1 1/2"=1'-0"



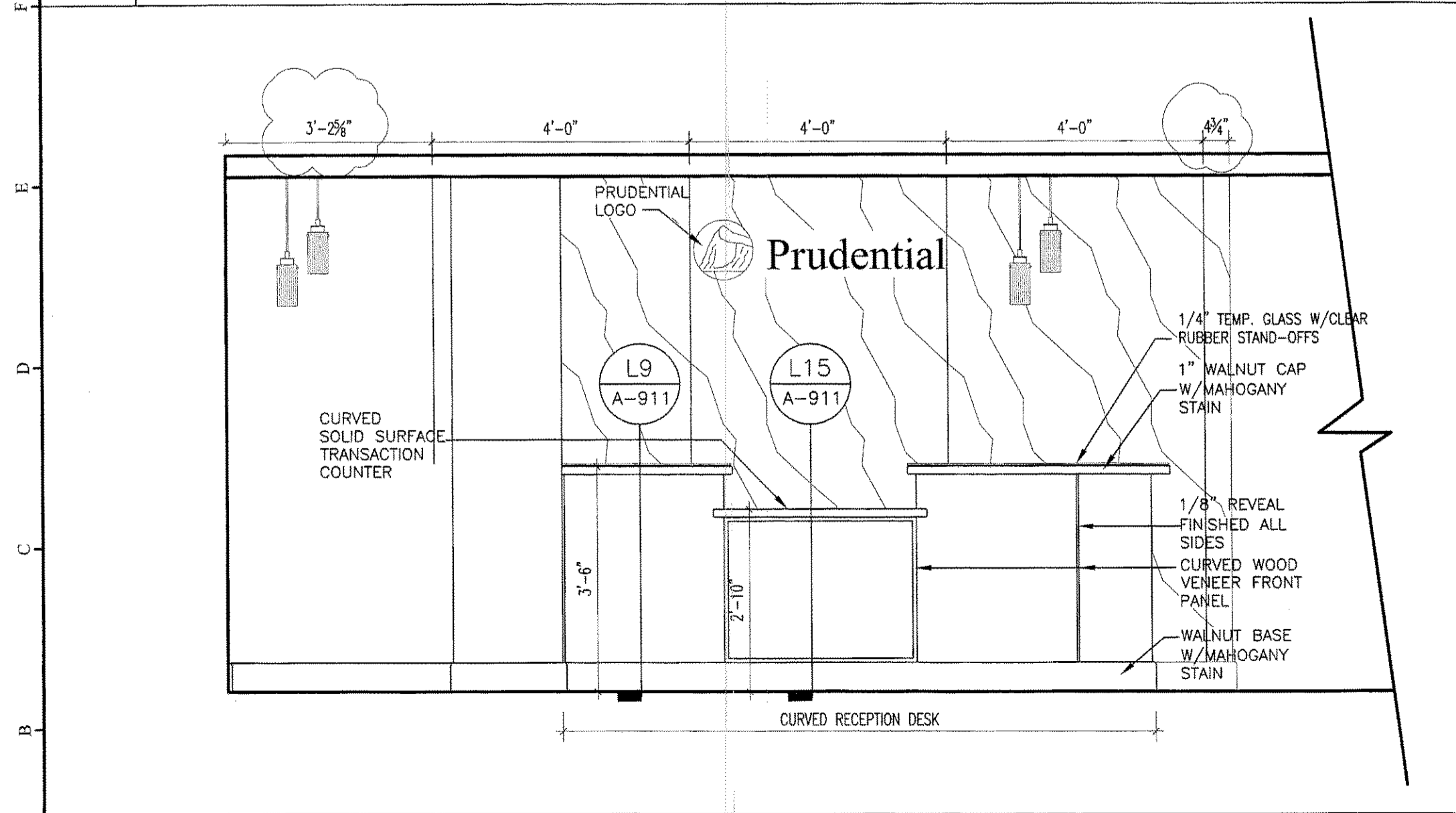
F1 RECEPTION 429

1/2"=1'-0"



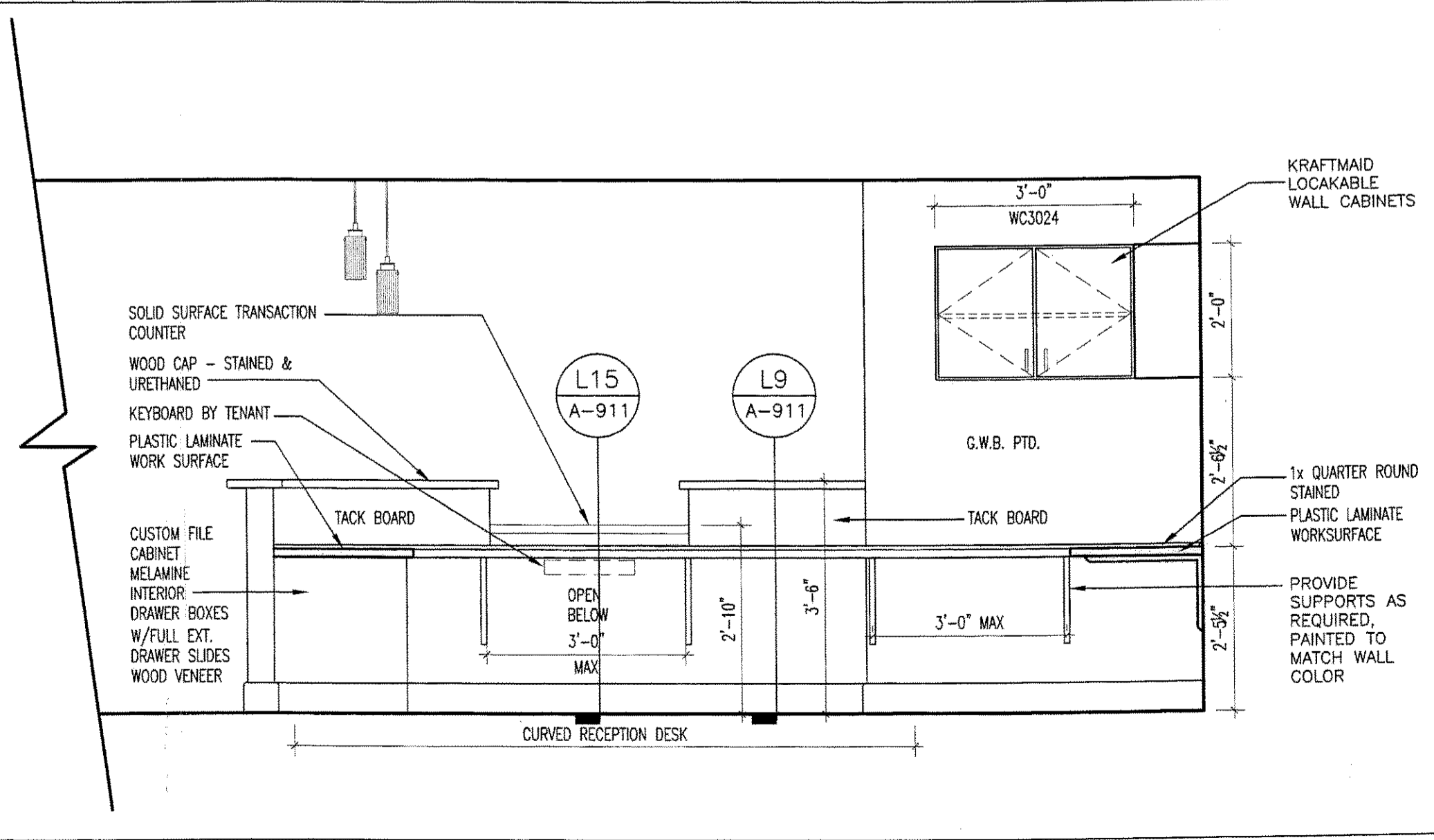
F8 ENTRY 426

1/2"=1'-0"



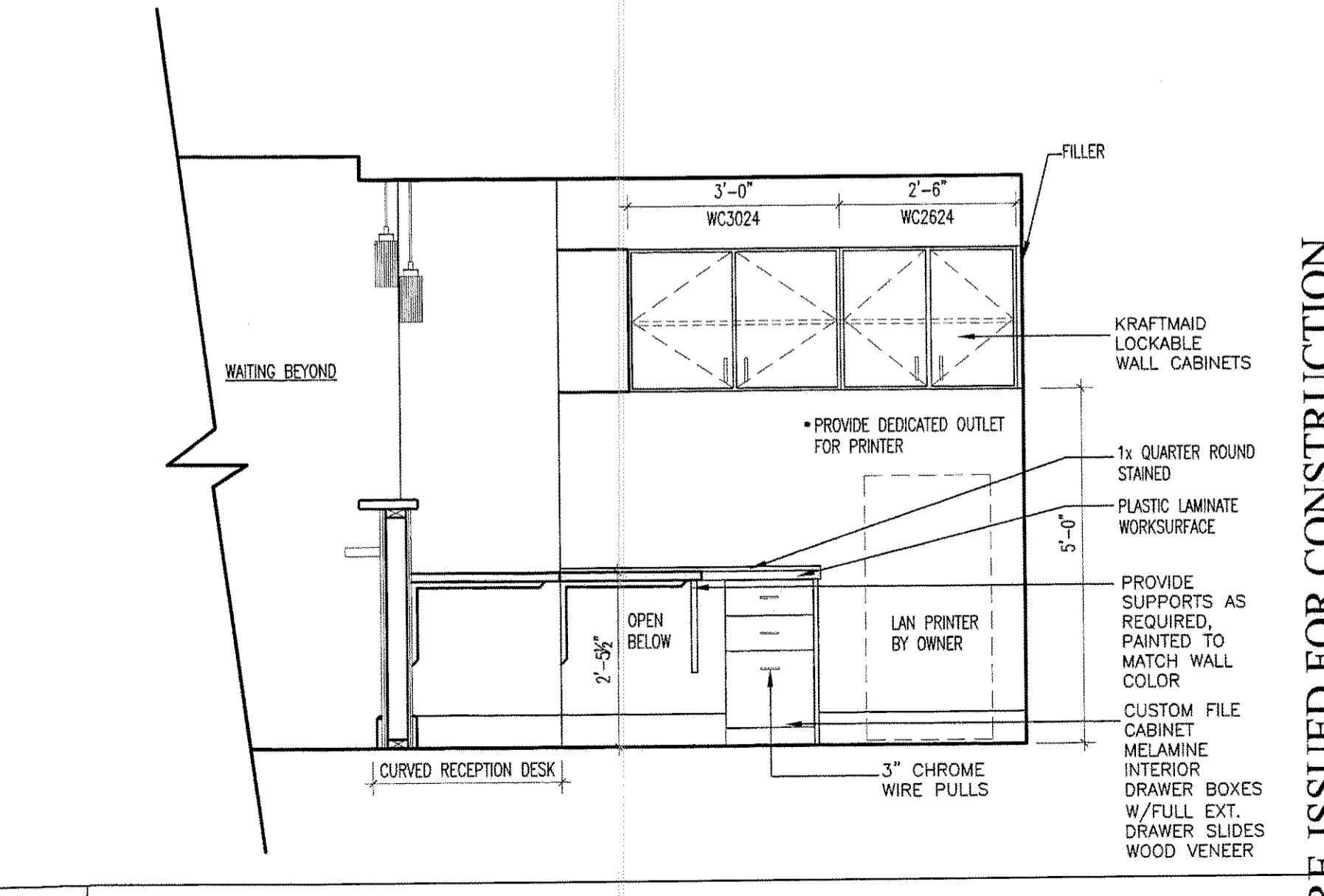
A1 RECEPTION 429

1/2"=1'-0"



A8 RECEPTION 429

1/2"=1'-0"



A15 RECEPTION 429

1/2"=1'-0"

RE-ISSUED FOR CONSTRUCTION