

**PLUMBING LEGEND**

— CW —	COLD WATER SUPPLY PIPING
— HW —	HOT WATER SUPPLY PIPING
— SM —	SANITARY PIPING
— VENT PIPING —	VENT PIPING
(3)XXX	EXISTING PIPING
— GATE VALVE (LINE SIZE)	GATE VALVE (LINE SIZE)
— BALL VALVE (LINE SIZE)	BALL VALVE (LINE SIZE)
— CHECK VALVE (LINE SIZE)	CHECK VALVE (LINE SIZE)
⊗	SHOCK ARRESTOR
⊙	NOTE DESIGNATION
⊕	UNIT NUMBER DESIGNATION
⊖	POINT OF CONNECTION BETWEEN NEW AND EXISTING WORK
⊗	FLOOR DRAIN
⊙	CLEANOUT (CO-1)
⊙	CLEANOUT PLUG (CO-2)
⊙	PLUMBING CONTRACTOR
⊙	HEAT AND VENT CONTRACTOR
⊙	ELECTRICAL CONTRACTOR
G.C.	GENERAL CONTRACTOR

**PLUMBING CODED NOTES**

- P1 DROP 1/2" CW PIPING IN WALL, COMPLETE W/ 1/2" x 1/2" STOP FOR ICE MACHINE CONNECTION. MAKE FINAL CONNECTION TO REFRIGERATOR.
- P2 DROP 1/2" CW & HW IN WALL, COMPLETE W/ STOPS. PROVIDE SHOCK ARRESTORS ON LINES @ DROPS.
- P3 DROP 1/2" CW PIPING IN WALL, COMPLETE W/ 1/2" x 1/2" STOP FOR COFFEE MAKER. MAKE FINAL CONNECTION.
- P4 EXTEND 1/2" HW LINE FOR CONNECTION TO DISHWASHER. MAKE FINAL CONNECTION.
- P5 WATER HEATER TO BE HUNG FROM STRUCTURE ABOVE CEILING. PROVIDE PLASTIC INSULATION SEPARATORS FOR ALL COPPER PIPING RUNNING THROUGH CEILING. PROVIDE INSULATION BETWEEN STUDS AND IN WALL WITH 1/2" RIBBON FIBER GLASS PIPING INSULATION.
- P6 EXTEND 3" SANITARY LINE TO NEAREST 4" STACK OR BRANCH. FIELD VERIFY BEST ROUTING & LOCATION.
- P7 EXTEND 3/4" CW TO NEAREST 1" MANV. PROVIDE VALVE @ TRAP. FIELD VERIFY BEST ROUTING & LOCATION.
- P8 ALL EXISTING PLUMBING ABOVE THIS ROOM SHALL BE RE-ROUTED AROUND THIS ROOM, W/ THE EXCEPTION OF SPRINKLER PIPING. FIELD VERIFY EXISTING CONDITIONS.
- P9 PC TO MAKE CONNECTION OF DISHWASHER TO SINK WASTE CONNECTION.
- P10 HUB DRAIN: INSTALL @ 6" AFF, AND INSTALL WITH TRAP PRIMER & HEATER AND MAINTAIN AIR GAP.
- P11 DEMO EXISTING 1/2" CW TUBING BACK TO SOURCE AND CAP.

**FIRE PROTECTION SCOPE**

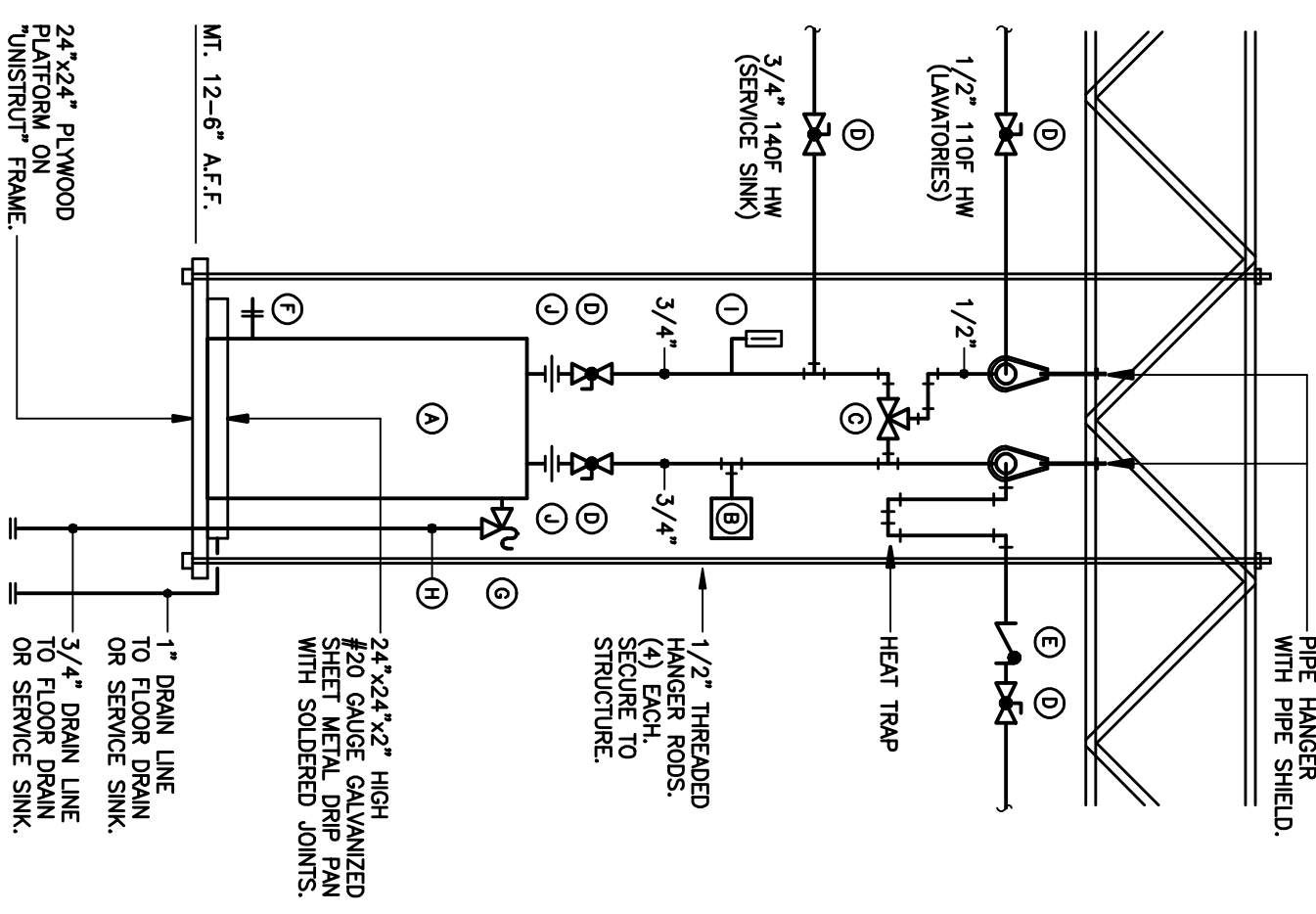
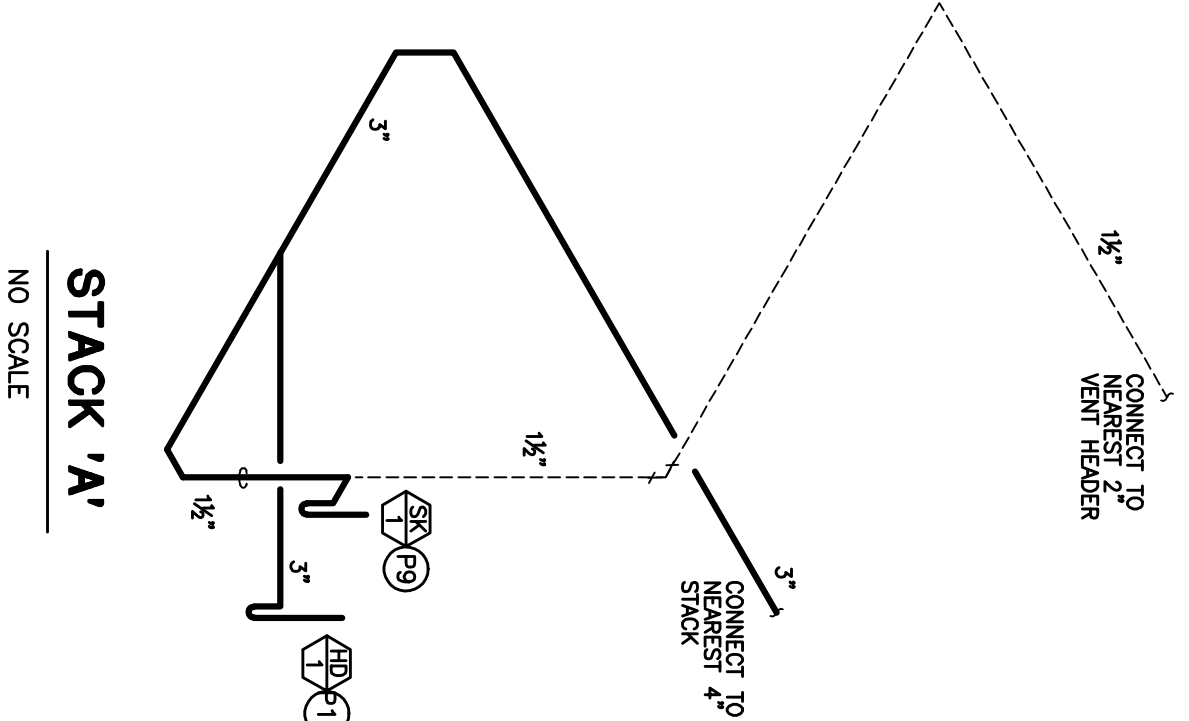
P.C. TO CONTRACT LIAISON/ APPROVED SPRINKLER CONTRACTOR TO RE-LAYOUT AND LOCATE EXISTING SPRINKLER HEADS FOR NEW SPACE LAYOUT. SPRINKLER CONTRACTOR TO SUBMIT DRAWINGS AND PAY ALL FEES.

**PLUMBING GENERAL NOTES**

- A. COORDINATE ALL WORK WITH OTHER TRADES.
- B. FIELD VERIFY ALL EXISTING SERVICES AND INVERTS. CONTRACTOR SHALL MAKE CORRECTIONS TO BUILDING SHELL SERVICES.
- C. SCHEDULE ALL WORK WITH ARCHITECT AND GENERAL CONTRACTOR.
- D. COORDINATE PIPING WHICH IS LOCATED ABOVE SLAB WITH BUILDING STRUCTURAL STEEL.
- E. COLD WATER AND HOT WATER SUPPLY PIPING LOCATED AT BOTTOM OF JOISTS IN CEILING. COORDINATE WITH STRUCTURAL STEEL.
- F. ALL PIPING SYSTEMS SHALL BE COORDINATED WITH PLYING PLAN, ARCHITECTURAL PLANS AND STRUCTURAL PLANS. COORDINATE PIPING ROUTES WITH DUCTWORK, LIGHT FIXTURES, ETC.
- G. PROVIDE BLOODING FOR ALL PLUMBING ROUGH-IN. COPPER PIPE SOLDERED TO METAL STUDS WILL NOT BE ACCEPTED.
- H. PROVIDE PLASTIC INSULATION SEPARATORS FOR ALL COPPER PIPING RUNNING THROUGH METAL STUDS. INSULATE PIPING BETWEEN STUDS AND IN WALL WITH 1/2" RIBBON FIBER GLASS PIPING INSULATION.
- I. ALL PIPING FOR PLUMBING FIXTURE ROUGH-INS TO BE LOCATED IN WALL UNLESS OTHERWISE NOTED.
- J. GROOVE ESCORTROOM PLATE SHALL BE REMOVED WHERE SANITARY, CW AND HW PIPE ROUGH-IN PENETRATES WALL IN FINISHED AREA.
- K. ALL WALL AND SLAB PENETRATIONS OF MASSIVE CONSTRUCTION TO BE SEaled. PROVIDE FINISHED SURFACE WITH FINISHED SURFACES. PROVIDE FIRE STOPPING AT FIRE RATED WALLS AND PARTITIONS.
- L. PROVIDE CW AND HW SHUT-OFF VALVES, ON BRANCH PIPES, AT EACH GROUP OF FIXTURES.
- M. PROVIDE SHOCK ARRESTORS AT EACH GROUP OF FIXTURES. SIZE PER MANUFACTURER'S REQUIREMENTS.
- N. PIPING LAYOUT IS ONLY GENERAL. EXACT LOCATION OF PIPES TO BE COORDINATED WITH ARCHITECTURAL AND STRUCTURAL DRAWINGS. PIPING SHALL BE KEPT PERPENDICULAR AND PARALLEL TO WALLS AND FLOORS.
- O. PLUMBING DETAIL REQUIREMENTS.
- P. PLUMBING CONTRACTOR SHALL OBTAIN PERMITS AND PAY ALL FEES ASSOCIATED WITH PLUMBING WORK PERMITS.

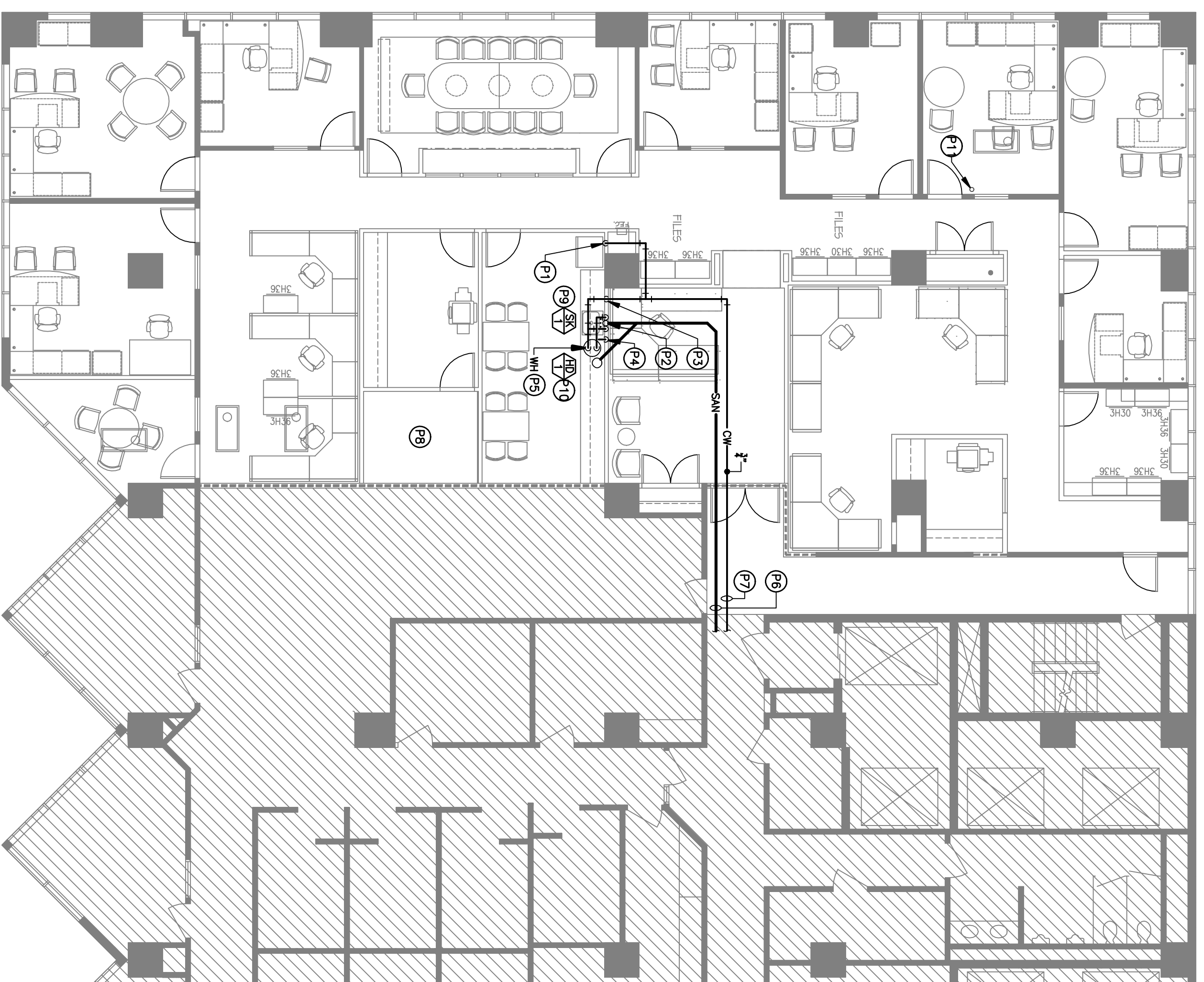
**PLUMBING FIXTURE NOTES**

- SK/1: SINK: ELAY NO. LP-B-B-15 "LISTERSON" 15.1x15" STAINLESS STEEL, COUNTERTOP SINK WITH 3 FAUCET HOLES ON 4" CENTERS. ELAY LK-2457SH CHROME FAUCET WITH 4" WRESTLEBAR HANDLES. MACHINE NO. 2185 3/8" PAVEL SUPPLIES AND STOPS. MANUFACTURER'S REQUIREMENTS. (PIPE ROUGH-IN: 1-1/2" SM, 1-1/2" VENT, 1/2" CW/HW)
- HD/1: HUB DRAIN: 3" HUB DRAIN STANDPIPE WITH 3" P-TRAP. EXTEND HUB OPENING 6" A.F.F.



**1 ELECTRIC WATER HEATER DETAIL**  
M-1 NO SCALE

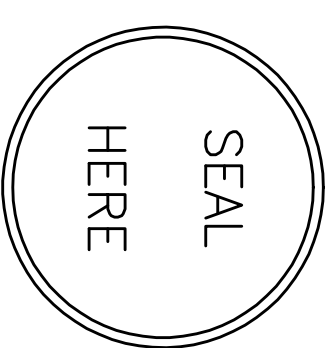
NOTE: SANITARY PIPING ABOVE CEILING SHALL BE CAST IRON OR COPPER AND THE WATER PIPES SHALL BE COPPER.



**FLOOR PLAN - PLUMBING**  
SCALE: 1/8" = 1'-0"

**NOMENCLATURE**

- ① ELECTRIC WATER HEATER
- ② THERMAL EXPANSION TANK
- ③ THERMAL WIRING VALVE
- ④ BALL VALVE
- ⑤ CHECK VALVE
- ⑥ DRAIN VALVE
- ⑦ AS-14E 125 LB. RELIEF VALVE AND PRESSURE
- ⑧ 3/4" DRAIN LINE
- ⑨ THERMOMETER
- ⑩ DIELECTRIC UNION



SHEET TITLE: **FLOOR PLAN - PLUMBING**

Date: \_\_\_\_\_  
Comm. No: \_\_\_\_\_  
In Charge: \_\_\_\_\_  
Drawn By: \_\_\_\_\_  
Checked By: \_\_\_\_\_

**M-1**

**McMULLEN ENGINEERING CO., INC.**  
MECHANICAL AND ELECTRICAL ENGINEERS  
100 South State Street, Westerville, Ohio 43081  
614-895-9408 FAX: 614-895-9450  
E-Mail: meci@mcmulleneng.com  
Web: http://www.mcmulleneng.com

**TENANT IMPROVEMENTS FOR:**  
**RBC Capital Markets**  
One Columbus Center  
15th Floor- Suite 1550  
10 West Broad St.  
Columbus, OH 43215

