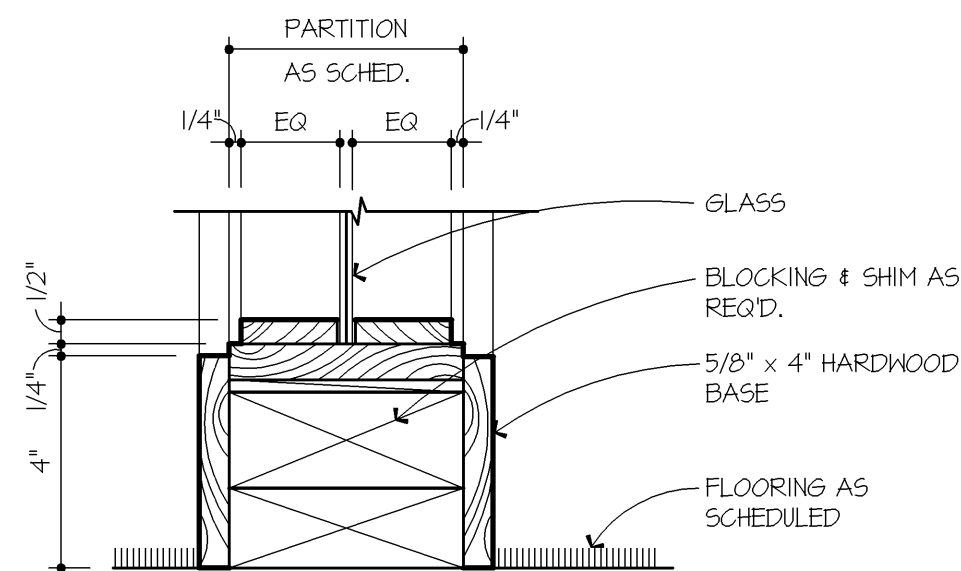
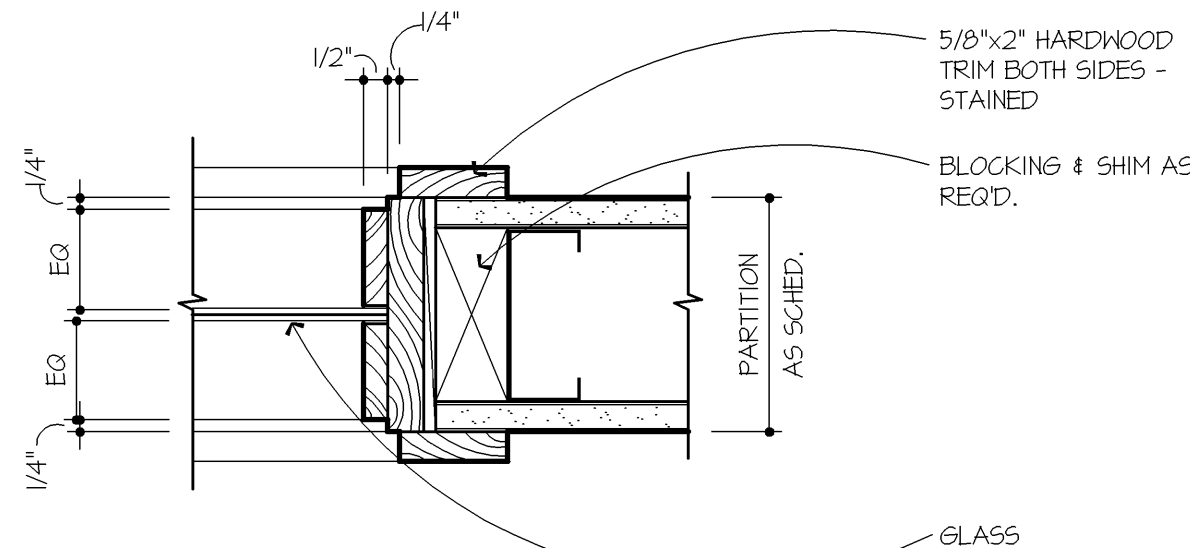


3A FRAME TYPES  
A800 1/4" = 1'-0"

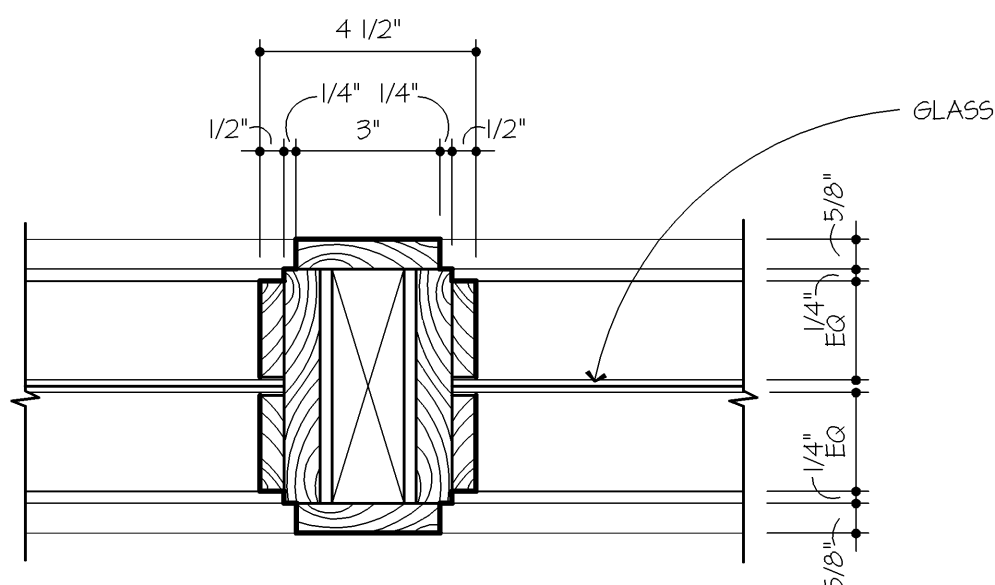


3B  
A800

DETAIL @ SIDELIGHT SILL  
SCALE: 3" = 1'-0"

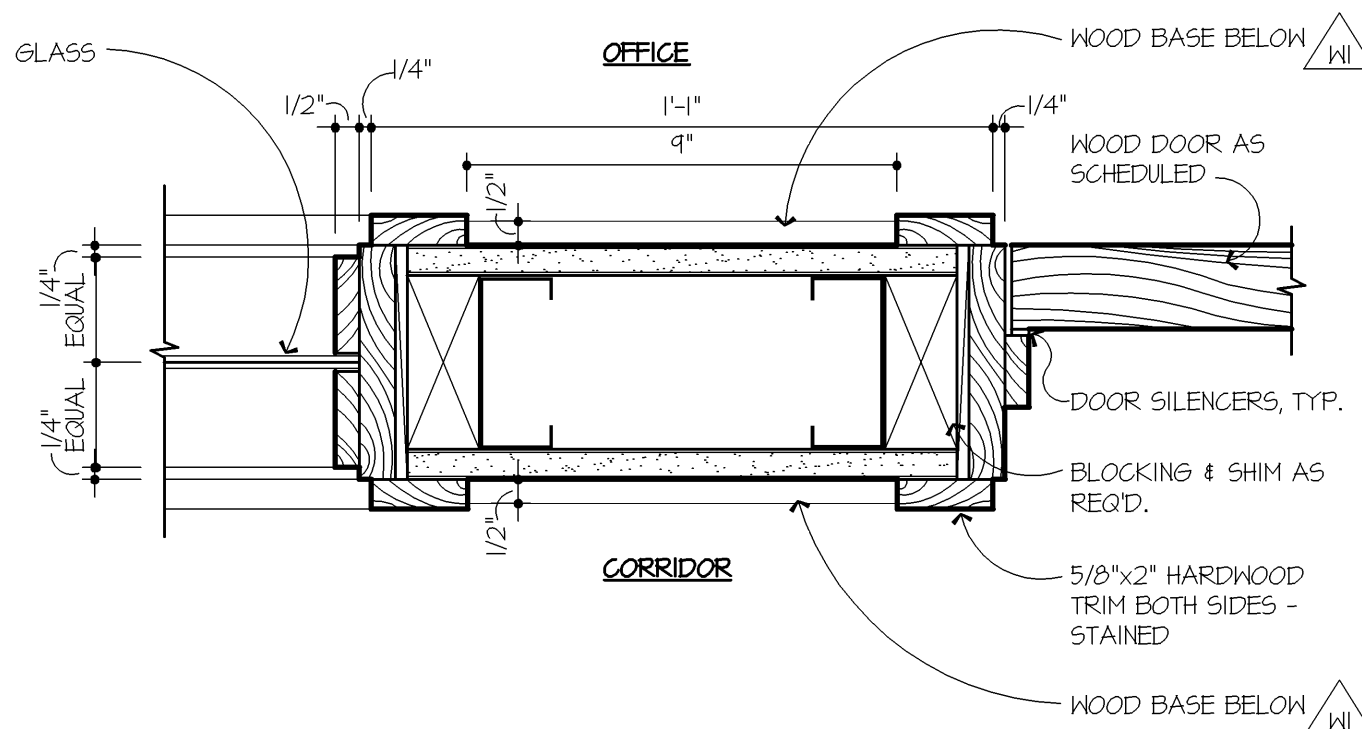


2B DETAIL@ SIDELIGHT JAMB  
A800 SCALE: 3" = 1'-0"



3C  
A800

DETAIL @ SIDELIGHT MULLION  
SCALE: 3" = 1'-0"



2C  
A800

DETAIL@ TYPICAL SIDELIGHT/ DOOR MULLION

SCALE: 3" = 1'-0"

[illegible]

1. VERIFY EXACT HARDWARE KEYING REQUIREMENTS WITH TENANT.
2. PROVIDE 1/4" CLEAR TEMPERED GLASS AT ALL SIDELIGHTS & INTERIOR WINDOWS, UNLESS OTHERWISE NOTED.

- GROUP 1A: (OFFICE/ COPY ROOM/ CONFERENCE)**
  - PASSAGE SET
  - BUTTS (2 PAIR)
  - WALL STOP
- GROUP 1B: (BREAK ROOM)**
  - PASSAGE SET
  - BUTTS (2 PAIR)
  - CLOSER
  - WALL STOP
- GROUP 2: (TELE/ DATA ROOM)**
  - LOCKSET STORAGE FUNCTION
  - BUTTS (2 PAIR)
  - WALL STOP
- GROUP 4A: (SECONDARY EXIT)**
  - CLASS ROOM FUNCTION LOCKSET
  - BUTTS (2 PAIRS)
  - SMOKE GASKETS WHERE RATED
  - PARALLEL ARM CLOSER
  - WALL STOP
- GROUP 5A: (PAIRED ENTRY DOORS)**
  - CLASS ROOM FUNCTION LOCKSET (ACTIVE LEAF)
  - AUTOMATIC FLUSH BOLTS (INACTIVE LEAF)
  - DUMMY PULL BOTH SIDES
  - BUTTS (4 PAIR)
  - PARALLEL ARM CLOSERS
  - COORDINATORS
  - WALL STOPS
  - SMOKE GASKETS WHERE RATED
- GROUP 7: (PAIR CLOSET DOORS)**
  - BUTTS (4 PAIR)
  - ROLLER CATCHES
  - DUMMY PULLS
  - SURFACE MOUNTED OVERHEAD STOPS (110")

Architecture ■ Interior Design ■ Planning  
900 2nd. Avenue South Suite #300  
Minneapolis, MN. 55402 612.338.879

I hereby certify that this plan, specification, or report was prepared by me or under my direct supervision and that I am a duly Licensed Architect under the laws of the State of Ohio.

DENNIS WALSH

Date: 11.29.07

License No. A7706007

● [ D E S I G N ]



● [ S U S T A I N A B L E ]



● [ Q U A L I T Y ]



● [VALUE]



**RBC Capital Markets**  
One Columbus Center  
15th Floor- Suite 1550  
10 West Broad St.  
Columbus, OH 43215

**RBC  
Capital  
Markets**

RBC Capital Markets Corporation • Member NYSE/SIP

[illegible]

No.	Date	Revision
-----	------	----------

Copyright © 2007 By Walsh Bishop Associates, Inc.  
Reproduction or translation of any part of  
this work without permission is unlawful.

## DOOR SCHEDULE, FRAME TYPES, DETAILS

Date:	11.29.07
Comm. No:	8528.295
In Charge:	D.W.
Drawn By:	K.M.
Checked By:	P.P.

# A800