

**GAWRON TURGEON ARCHITECTS**  
 29 Black Point Road  
 Scarborough, ME 04074  
 www.gawronturgeon.com  
 Tel. 207-883-6307  
 Fax. 207-883-0361

**PRUDENTIAL**  
 TWO PORTLAND SQUARE FOURTH FLOOR  
 PORTLAND, MAINE

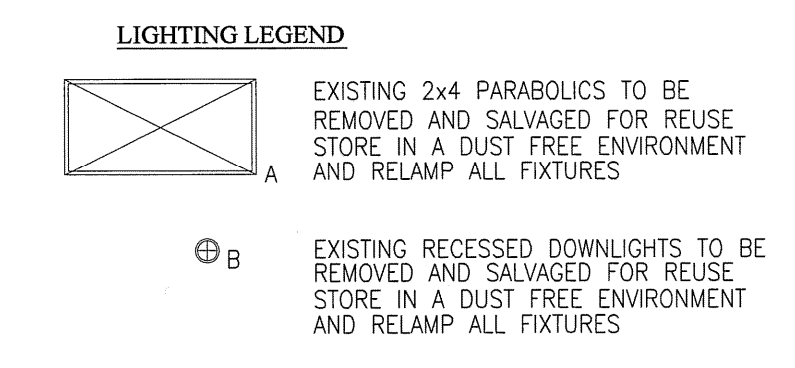
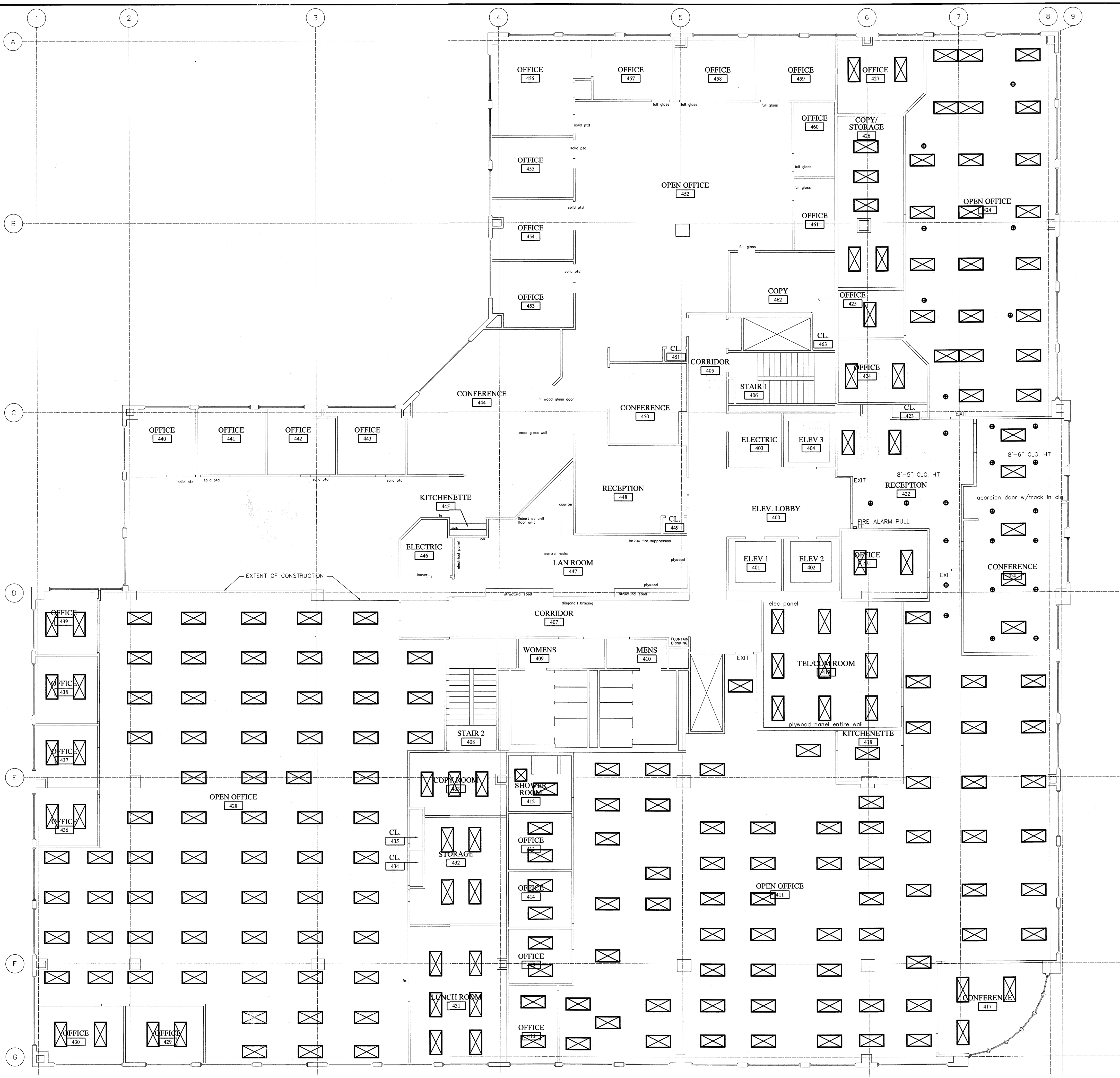
REVISIONS	
#	DATE DESCRIPTION

DATE:	01-21-08
PROJECT #:	110807
DRAWN BY:	DLP
CHECKED BY:	MET/SWG
DRAWING SCALE:	AS NOTED

**SHEET TITLE**  
 EXISTING CONDITIONS  
 FOURTH FLOOR PLAN  
 REFLECTED CEILING PLAN

**EX300**

© COPYRIGHT 1985-2003  
 REPRODUCTION OR RESALE OF  
 THIS DOCUMENT WITHOUT THE  
 WRITTEN PERMISSION OF  
 GAWRON ARCHITECTS IS PROHIBITED



- NOTES:**
- LIGHTING LAYOUT IS FOR QUANTITY INTENT ONLY. EXACT LOCATION OF FIXTURES MAY VARY.
  - REUSE ALL EXISTING LIFE SAFETY FIXTURES. REMOVE AND RELOCATE AS NECESSARY DUE TO NEW LIFE SAFETY PLAN.
  - G.C. TO VERIFY QUANTITY OF ALL LIGHTING AND LIFE SAFETY FIXTURES TO DETERMINE IF ANY NEW FIXTURES WILL BE NEEDED.

**A1** FOURTH FLOOR EXISTING CONDITIONS REFLECTED CEILING PLAN

**A17** LEGEND / NOTES

ISSUED FOR CONSTRUCTION

