

INSULATION NOTES

1. Insulate supply ductwork with 1-1/2" ductwrap, FSK meeting NFPA 90A 4 B, 0.23 Btu-in/r-ft-F at 15°F mean temperature.
2. Insulate domestic water piping with 1" fiberglass insulation with ASJ, 0.23 Btu-in/r-ft-F at 50°F mean temperature.
3. Insulate condensate piping, Refrigerant Liquid (RL) and Refrigerant Suction (RS) piping with 1/2" flexible unicellular insulation.
4. Insulation shall be suitable for installation in a plenum.
5. Submit insulation materials for review by the Engineer.

PLUMBING NOTES

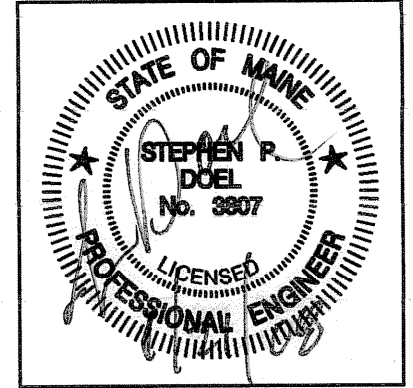
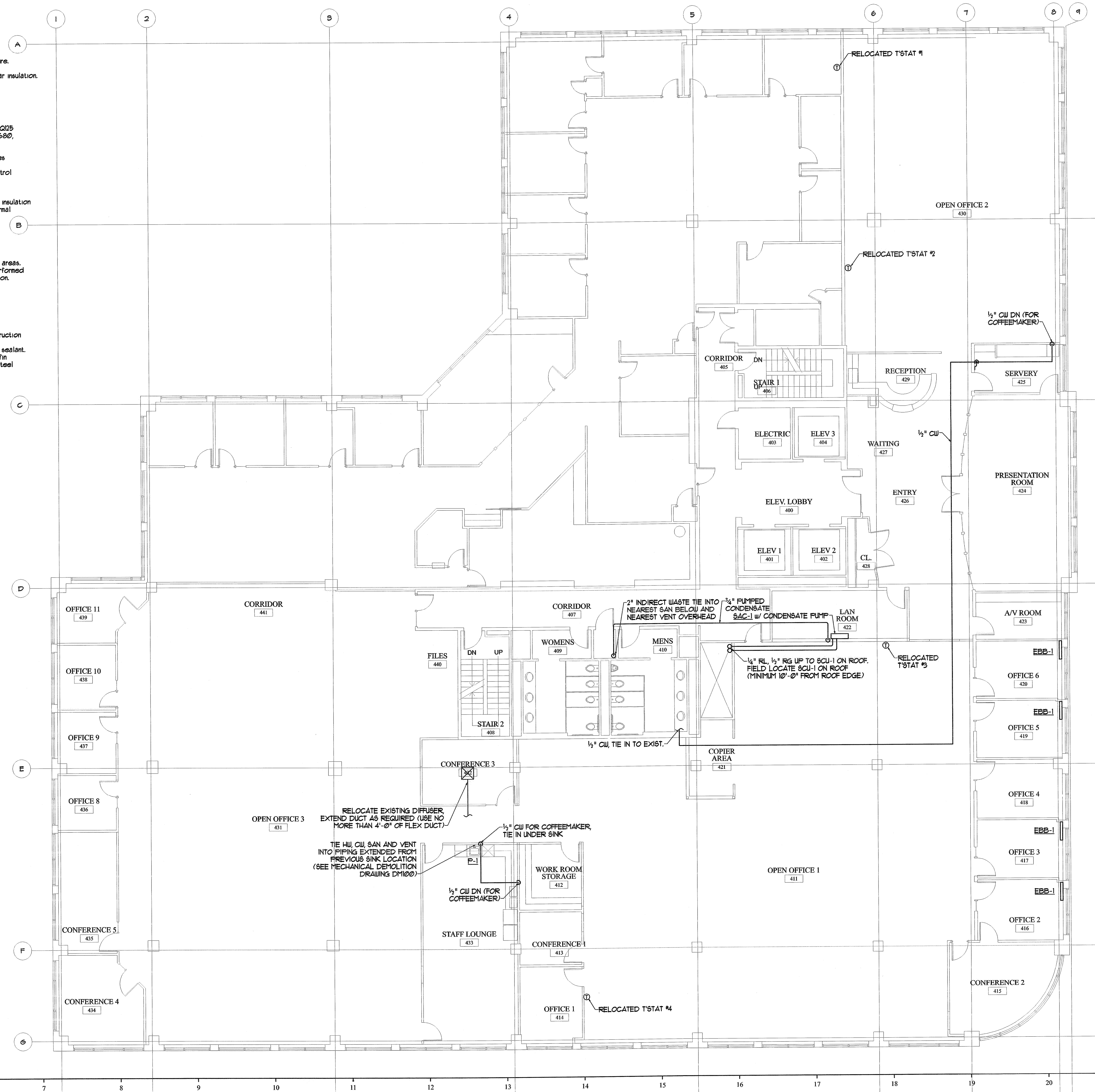
1. Domestic water piping shall be Type 'L' copper with cast bronze or wrought copper fittings.
2. Sanitary piping shall be service weight cast iron or 'No Hub' cast iron. No Hub fittings shall be Clamp-All HI-TORQUE25 with 30455 housing, ASTM C-564 neoprene gasket, shall maintain 15 PSI hydrostatic seal and shall comply with FM1600, IBC and local codes and requirements.
3. Vent piping shall be schedule 40 PVC.
4. (F-1) ADA Kitchen Sink, Single Bowl, Elkay LRAD2521 stainless steel, 25"x21.25"x6" deep overall size, 4 faucet holes on 4" centers, fully sound deadened. Drain shall be located in upper left or right corner of bowl.
 - a. Faucet: Chicago Model 2301-8, single handle, 2.0 gpm aerator, 10" spout, polished chrome finish, ceramic control cartridge, hose and spray.
 - b. Strainer: Dayton Model CP-125 with removable basket and neoprene stopper.
 - c. Sink installation shall be in compliance with the ADA guidelines.
 - d. Insulation Kit: Insulate exposed supply and waste piping at handicapped accessible sinks with fully molded insulation kit, McGuire Products Frothrap, 3/16" thick closed vinyl with anti-microbial additive, 1.02 Btu-in/r-F2-of thermal conductivity, white color.
5. Submit piping materials, accessories and fixtures for review by the Engineer.

SPRINKLER NOTES

1. Design and install modifications to the existing sprinkler system to provide required coverage for all renovated areas.
2. Sprinkler work shall be performed by a licensed Fire Protection Contractor. Design of modifications shall be performed and sealed by a Professional Engineer licensed in the State of Maine or with NICET Level III (minimum) certification.
3. Sprinkler heads shall match existing.
4. Sprinkler piping shall be suitable for installation in a plenum.
5. Submit sprinkler layout, calculations, piping and appurtenances for review by the Engineer.

DUCTWORK NOTES

1. Ductwork and fittings shall be constructed from galvanized steel (G90) in conformance with SMACNA "Duct Construction Standards" and NFPA90A for 2" W.G. pressure class. Longitudinal joints shall be Pittsburgh Lockseam (ONLY).
2. Duct joints shall be sealed to SMACNA seal class B. Joint sealer shall be Hardcast "Duct-Seal 321" water based sealant.
3. Flexible duct shall be Wremold type WGF, polyester core with wire helix, 1-1/2" thick fiberglass insulation, polyolefin jacket/vapor barrier. Maximum length shall be 4'-0". Flexible ducts shall be secured with clinch type stainless steel draubands.
4. Submit duct sealer and flexible ducts for review by the Engineer.



GAWRON TURGEON ARCHITECTS
 29 Black Point Road
 Scarborough, ME 04074
 www.gawronturgen.com
 Tel. 207. 883. 6307
 Fax. 207. 883. 0361

PRUDENTIAL
 PORTLAND, MAINE

REVISIONS	
#	DATE DESCRIPTION

DATE:	1-21-08
PROJECT #:	110807
DRAWN BY:	JMV
CHECKED BY:	SPDoel
DRAWING SCALE:	1/8"=1'-0"

SHEET TITLE
 FOURTH FLOOR
 MECHANICAL PLAN

M100

© COPYRIGHT 1985-2003
 REPRODUCTION OR RESALE OF
 THIS DOCUMENT WITHOUT
 WRITTEN PERMISSION OF
 GAWRON ARCHITECTS IS PROHIBITED