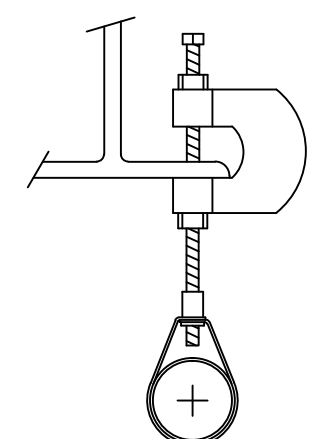


CALC FILE : C121081.WX1
 HYDRAULIC DATA:
 BASIS OF DESIGN:
 AREA: 900 SQUARE FEET
 DENSITY: 0.10 GAL/SQ FOOT
 TOTAL ORIFICE TEMP
 SPRINKLERS 11 1/2" 155"
 SYSTEM DEMAND AT TEST:
 PRESSURE FLOW HOSE
 325.0 80.1 100
 SAFETY MARGIN 77.6 PSI
 OCCUPANCY: OFFICE

SYSTEM CLASSIFICATION:
 RELOCATION OF EXISTING SPRINKLERS AND ADDITION OF NEW SPRINKLERS TO COVER RENOVATED OFFICE SPACE. WET PIPE SYSTEM HYDRAULICALLY CALCULATED AT A LIGHT HAZARD DENSITY OF 0.10 GPM OVER 900 SQUARE FEET WITH A 100 GPM HOSE ALLOWANCE. INSTALL CONCEALED HEADS WITH WHITE COVERPLATES IN THE GYPSUM BOARD CEILINGS IN THE CENTER OF THE ACOUSTIC CEILING TILES. SYSTEM IS TO BE DESIGNED AND INSTALLED IN ACCORDANCE WITH NFPA-13, STANDARD FOR THE INSTALLATION OF SPRINKLER SYSTEMS, 2010 EDITION.

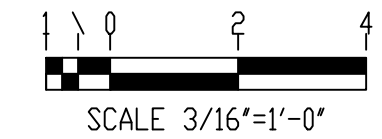
GENERAL NOTES:
 ALL THREADED PIPE IS TO BE SCH. 40 BLACK STEEL U/N.
 ALL GROOVED PIPE IS TO BE SCH. 10 BLACK STEEL U/N.
 ALL THREADED PIPE FITTINGS ARE TO BE BLACK CAST IRON, CLASS 125 U/N.
 DIMENSIONS SHOWN ON THREADED PIPE ARE CENTER TO CENTER U/N.
 DIMENSIONS SHOWN ON GROOVED PIPE ARE "CUT" LENGTHS U/N.
 ALL HANGERS TO BE CADMIUM PLATED U/N.
 SPRINKLER HEADS TO BE LOCATED IN CENTER OF CEILING TILES
 SUFFICIENT HEAT TO PREVENT FREEZING OF THE WET SPRINKLER SYSTEM IS REQUIRED TO BE FURNISHED BY THE BUYER/OWNER.

- LEGEND**
- ⊙ RISER LOCATION
 - RISE OR DROP NIPPLE
 - X-X CEILING HEIGHT
 - HANGER
 - EXISTING SPRINKLER PIPING
 - NEW SPRINKLER PIPING
 - D g= 'x'-'x" DECK TO PIPE CENTERLINE
 - FF g= 'x'-'x" FINISHED FLOOR TO PIPE CENTERLINE



#24 BEAM CLAMP
 NOT TO SCALE

65 RELIABLE G4A
 155" QUICK RESPONSE / STANDARD COVERAGE
 CONCEALED PENDENT
 1/2"NPT K=5.6



SCALE 3/16"=1'-0"

DANA A. STEWART
 NICET IV 064544

DEAN & ALLYN, INC.
 FIRE PROTECTION - SPECIAL HAZARD
 PO BOX 709, GRAY, MAINE 04039
 207/657-5646 FAX 207/657-5647

FIRE PROTECTION LAYOUT

APPROVED BY	SURVEYED BY	PLAN	N/A	TITLE
		CAS	6/8/12	
	CHECKED BY	AT DEAN & ALLYN, INC		
		SCALE 3/16" = 1'-0" U.L.N.		
		SHEET NO. 1 OF 1		
FOR PERMIT	6/8/12			
REVISIONS	DATE			

AMERIPRISE
 2 PORTLAND SQUARE
 SUITE #701
 PORTLAND, MAINE

NO. OF SPRINKLERS SHOWN ON THE SHEET	65
NO. OF SPRINKLERS ON JOB	65
CONTRACT NO.	C121081