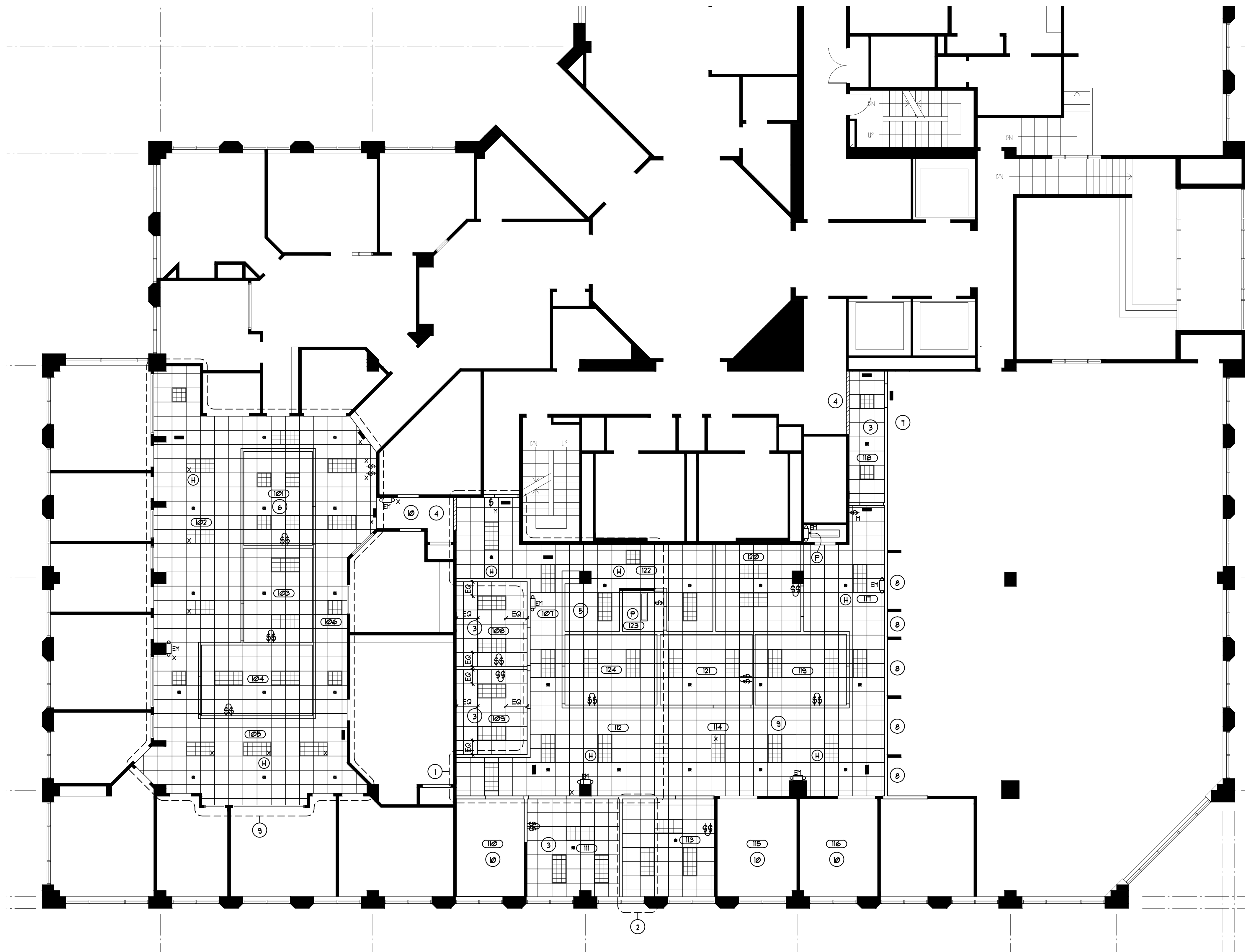




PCG - PORTLAND, ME  
Business Entity # 145194  
2nd Flr, 2 Portland Square  
Portland, ME 04101

Wells Fargo Bank, N.A.  
420 Montgomery Street  
San Francisco, CA 94104

Revisions: Permit & Construction Issue - 8-12-10	
Project Number:	
Designer: DLW	Drawing Date: 07-12-10
Drafter: DLW	Drawing Scale: 1/8" = 1'-0"
Wells Fargo Approval:	
Client Approval:	
Drawing Number: A104	
Sheet: of	



**SYMBOL LEGEND**

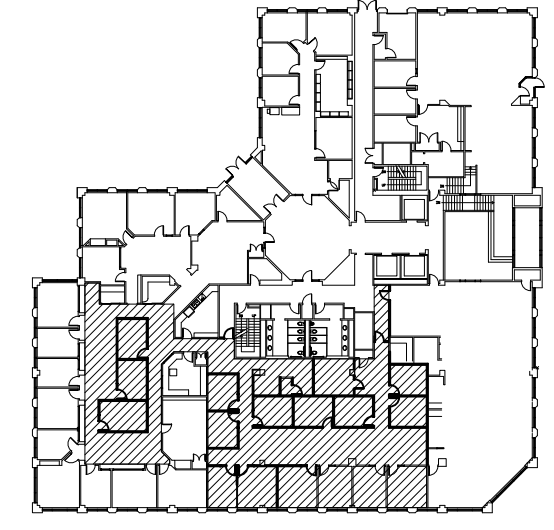
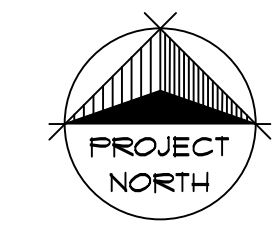
- RECESSED 2' x 4' (18)-CELL LAY-IN PARABOLIC FLUORESCENT LIGHT FIXTURE W/ 3 - 32W T8 3500K LAMPS AND INSTANT START ELECTRONIC BALLAST EQUAL TO COLUMBIA F424-332G-LD36-A-EU
- RECESSED 2' x 2' (9)-CELL LAY-IN PARABOLIC FLUORESCENT LIGHT FIXTURE W/ 2 - T8 T8 3500K LAMPS AND INSTANT START ELECTRONIC BALLAST EQUAL TO COLUMBIA F422-232I6G-LD33-A-EU
- 4" SURFACE MOUNTED - STRAIGHT SIDED UTILITY CHANNEL STRIP LIGHT, EQUAL TO COLUMBIA C64-131-EU
- LIGHT SWITCH - ON/OFF
- SPLIT SWITCHING - ON/OFF
- MASTER CONTRACTOR SWITCH FOR GENERAL OFFICE LIGHTING CONTROL. PROVIDE THREE-WAY CONTACTOR SWITCHES
- ILLUMINATED EXIT LIGHT BLDG. STD. PROVIDE WITH DIRECTIONAL ARROWS AS REQ'D. RE-USE EXIST'G. TO THE FULLEST EXTENT.
- EXISTING ITEMS TO REMAIN
- SPRINKLER HEAD, EXIST'G. OR RELOCATED. SEE FIRE PROTECTION SHOP DUGS.
- EMERGENCY FIXTURE W/ INTEGRAL BATTERY PACK, STAINLESS STEEL. RE-USE EXIST'G. TO THE FULLEST EXTENT. SUPPLEMENT W/ LIKE LOCATIONS ARE SUGGESTED. SEE ENGINEERING DUGS.
- RATE OF RISE HEAT DETECTOR
- PHOTOELECTRIC SMOKE DETECTOR

**KEYNOTES**

1. EXTEND EXIST'G. ACOUSTIC CEILING GRID SUSPENSION & TILE AS REQ'D TO ALIGN & COMPLETE THE GENTL. OFFICE AREA.
2. EXTEND THE EXIST'G. CLG. GRID & ACOUSTIC TILE AS REQ'D. TO ALIGN & COMPLETE THE AREA INDICATED.
3. FURNISH & INSTALL A NEW, SEPARATE, 15/16", EXPOSED "T", 2' x 2' LAY-IN CEILING & ACOUSTIC TILE TO MATCH. FND. HT. - 8'-6". CENTER GRID IN ROOM OR AREA.
4. RE-FRAME UPPER PORTION OF EXISTING PARTITION TO CREATE A NEW FND DRYWALL CLG TRANSITIONAL BULKHEAD. ALIGN W/ FACE OF ACOUSTIC TILE.
5. PROVIDE SUFFICIENT HVAC TO ACCOMMODATE EQPMT. HEAT LOADS. SEE TELEPHONE & ELECTRICAL PLAN KEYNOTES, THIS SHEET.
6. PROVIDE SUFFICIENT HVAC TO ACCOMMODATE ROOM OCCUPANT LOAD. SEE FURNITURE PLAN.
7. CUT BACK EXISTING DRYWALL LIGHT COFFER & FIXTURES AS REQ'D.
8. ALTER EXISTING CEILING AS REQ'D TO SUITE NEW DEMISING PARTITION.
9. EXISTING CEILING TO REMAIN. ALTER AS REQ'D. GRID SHOWN FOR CLARIFICATION ONLY.
10. EXIST'G. CEILING & LIGHTING TO REMAIN

**GENERAL NOTES**

1. EXIST'G. 15/16", EXPOSED "T", 2' x 2' SUSPENDED LAY-IN, GRID CLG. SYSTEM AND 2' x 2', REGULAR ARISTON "CORTEGA" ACOUSTIC TILE TO REMAIN AS NOTED. CONTRACTOR SHALL REFACE ANY/ALL DAMAGED OR UNSIGHTLY TILE AND/OR GRID COMPONENTS AS REQ'D. TO RESULT IN AN "AS NEW" FND. APPEARANCE. FND. HT. ± 8'-6". FLD. VERIFY. SCOPE OF WORK SHALL INCLUDE INSTALLATION OF COMPONENTS SALVAGED FROM DEMO TO EXTEND & COMPLETE SPECIFIC AREAS. SUPPLEMENT W/ NEW TO MATCH WHERE REQ'D.
2. MECH'L. CONTRACTOR SHALL ALTER, EXTEND AND SUPPLEMENT THE EXIST'G. MECHANICAL SYSTEM & ROUGH-INS AS REQ'D., IN ACCORDANCE W/ THE ENGINEERING DUGS TO PROVIDE A COMPLETE SYSTEM. CAPABLE OF PROVIDING SUFFICIENT HVAC TO HANDLE EQPMT. HEAT LOADS & ROOM OCCUPANT LOADS AS DEFINED VIA FURNITURE LAYOUT & ELEC. PLAN KEYNOTES. SUB-CONTRACTOR SHALL SUBMIT FABRICATION DUGS FOR REVIEW & APPROVAL, INCL. ANY/ALL NECESSARY "HFS" CUT SHEETS OR SPECS AS MAY BE REQ'D. TO FULLY DELINEATE THE SCOPE OF WORK AND / OR THE FINISHED APPEARANCE.
3. ALL MECHANICAL & ELECTRICAL WORK SHALL BE DONE IN ACCORDANCE W/ THE LATEST EDITION OF ALL APPLICABLE INDUSTRY STDs. & CODES HAVING JURISDICTION OVER THE PROJECT. EA. SUBCONTRACTOR SHALL BE RESPONSIBLE FOR ANY/ALL REQ'D. SUPPLEMENTAL DESIGN DOCUMENTS AS WELL AS THEIR ASSOCIATED COSTS.
4. SCOPE OF MECH WORK SHALL INCLUDE ALL NECESSARY CONTROL WIRING & DEVICES & FINAL BALANCE. CO-ORD. FINAL T-STAT LOCATIONS W/ ARCHITECT.
5. ALL EXIT LIGHTS, SPKRS, SMOKE DETECTORS, AND/OR OTHER CLG. INTD. DEVICES SHALL CTR. ON 2' x 2' FACE OF ACOUSTIC TILE.
6. SEE ENGINEERING DUGS FOR CONFIRMATION OF EXIT AND EMERGENCY FIXTURE LOCATIONS.
7. CONTRACTOR BID SHALL INCLUDE A SEPARATE LINE ITEM PRICE FOR CONVERSION OF EXIST'G. 2' x 4' 2' x 2' FLOOR FIXTURES FROM T12 TO T8 LAMPING.



KEY PLAN

REFLECTED CEILING PLAN  
SCALE: 1/8" = 1'-0"