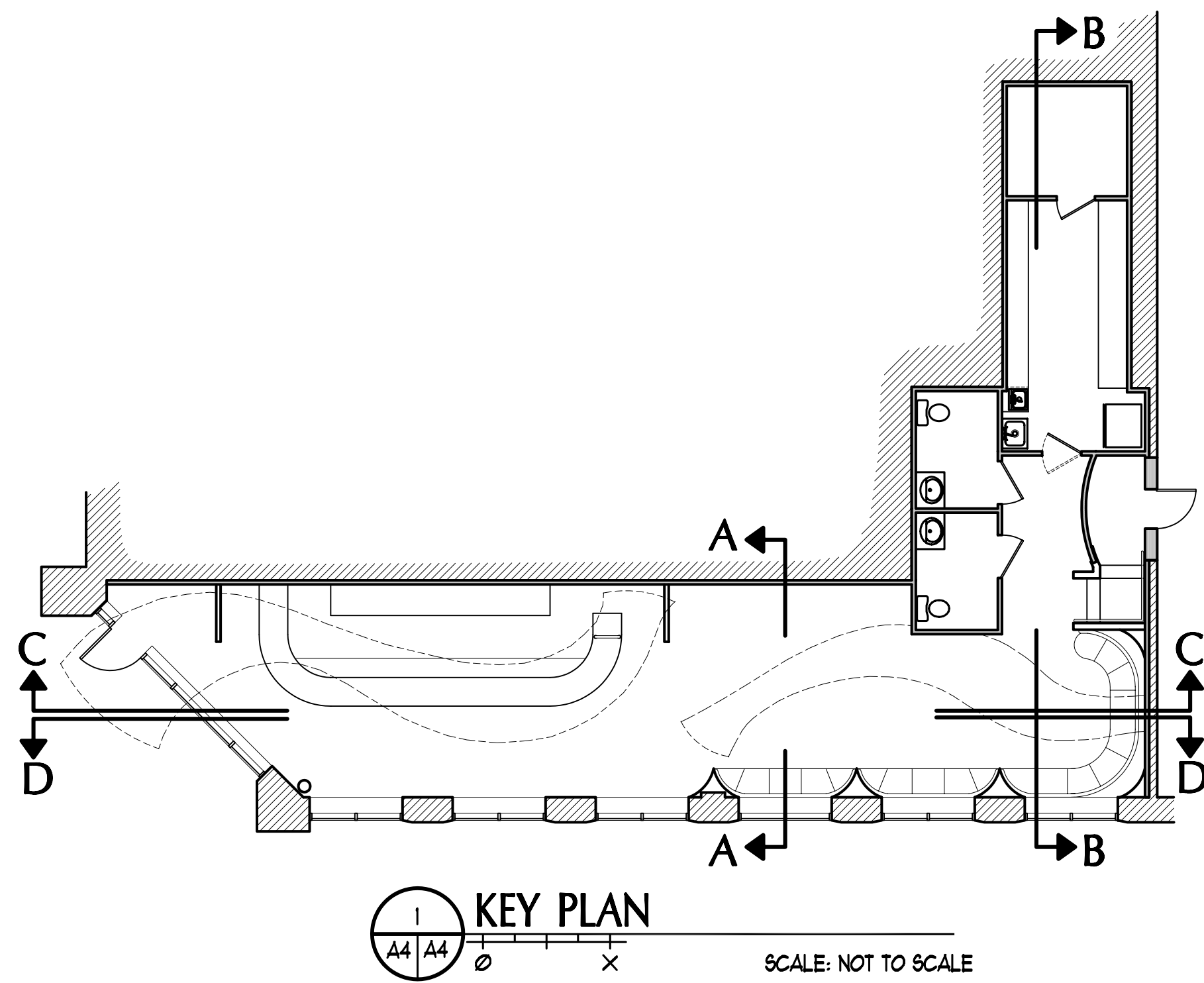
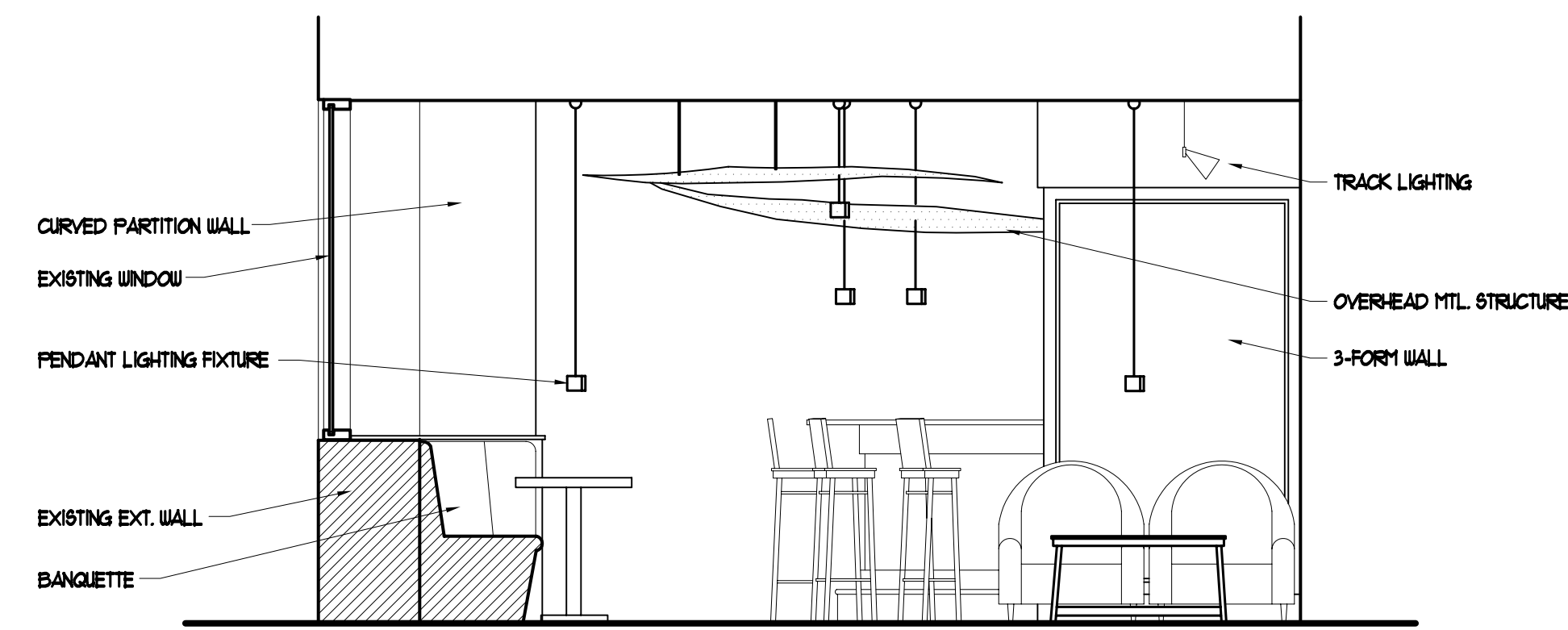


IF THIS SHEET IS NOT 24 X 36 IT IS A REDUCED SCALE PRINT - SCALE ACCORDINGLY

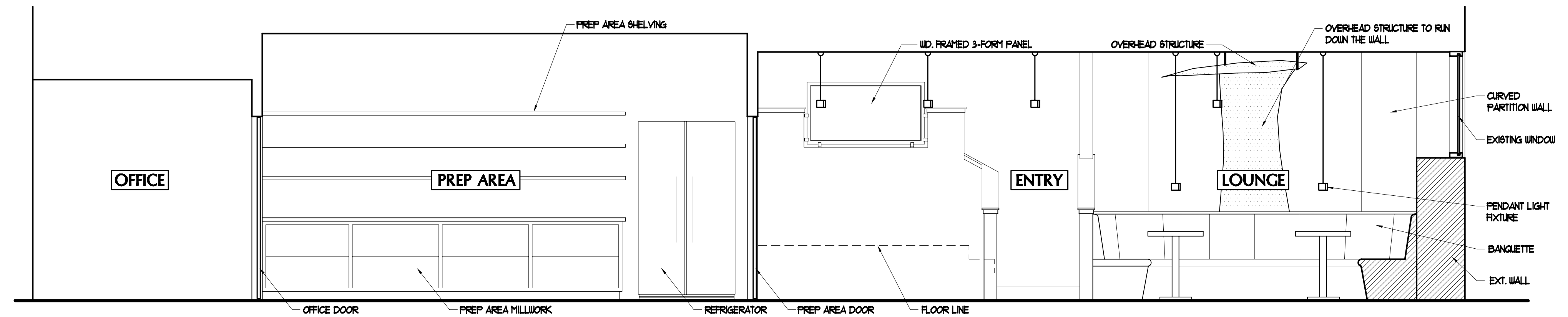
3
2
1
0
SCALE 1"=1'-0"
4
3
2
1
0
SCALE 3/4"=1'-0"
6
3
0
SCALE 1/2"=1'-0"
12
8
4
0
SCALE 1/4"=1'-0"
20
10
0
SCALE 1/8"=1'-0"
40
20
0
SCALE 1/16"=1'-0"



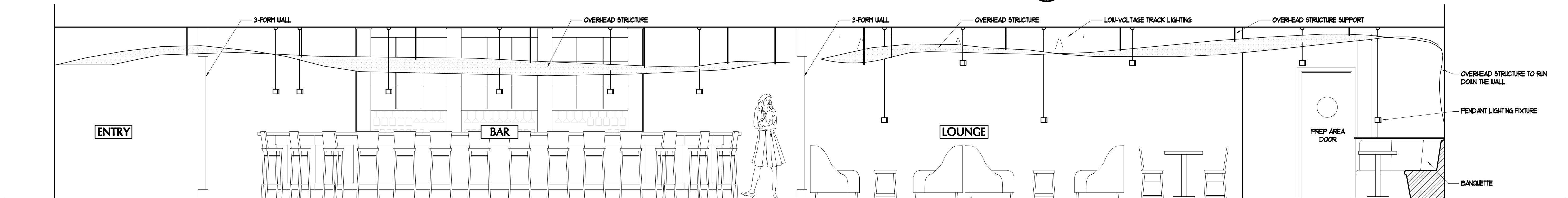
1 KEY PLAN
SCALE: NOT TO SCALE



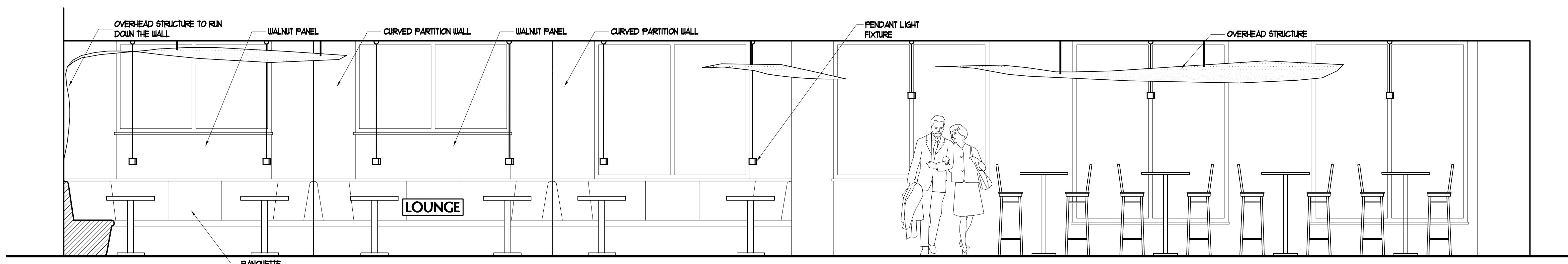
2 INTERIOR ELEVATION A-A
SCALE: 3/8" = 1'-0"



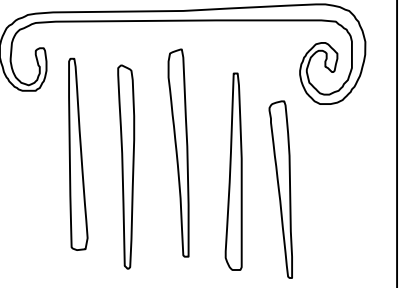
3 INTERIOR ELEVATION B-B
SCALE: 3/8" = 1'-0"



4 INTERIOR ELEVATION C-C
SCALE: 3/8" = 1'-0"



5 INTERIOR ELEVATION D-D
SCALE: 3/8" = 1'-0"



PORT CITY ARCHITECTURE

65 NEWBURY STREET
PORTLAND, ME 04101
207.761.9000
fax: 207.761.2010
info@portcityarch.com



CONSULTANTS:

Electrical Systems of Maine

Mr. John Tarr, P.E.
1200 MINOT AVE.
P.O. BOX 1365
AUBURN MAINE 04211
207-183-7126

Perkins Restaurant Equipment

Mr. Steve Zaffron
630 JOHN HANCOCK RD.
TAUNTON, MA 02718
207-632-3736

RSE Construction

Mr. R. Shane Estes
120 TARGETT ROAD
NEW GLOUCESTER, ME 04260
207-926-3881

Ginkgo Blue

2 Portland Square
Suite 104
Union Street
Portland, Maine
04101

REVISIONS

DATE DESCRIPTION

Date Issued 12-11-2009

Project Number 03207

Drawing Scale A5 DRAWN

SHEET NAME

INTERIOR ELEVATIONS

Drawn By

m&c

Checked By

a&c

A4.0