



DATE: 2017-10-25

REVISIONS:

NO.	DATE	DESCRIPTION	BY
1	10/25/2017	REVISIONS PER PLAN REVIEW COMMENTS	JMF

CLIENT NAME:



J+J FIT, LLC
OWNER: JAMIE CALEDA
18 PARKER AVENUE
WARREN, RI 02885
EMAIL: JCALEDA@PUREBARRE.COM

PROJECT NAME:



TWO PORTLAND SQUARE
477 FORE STREET - SUITE 128
PORTLAND, MAINE 04101

SHEET TITLE:

TYPICAL
DETAILS &
SECTIONS

PROJECT NUMBER: 17-A094

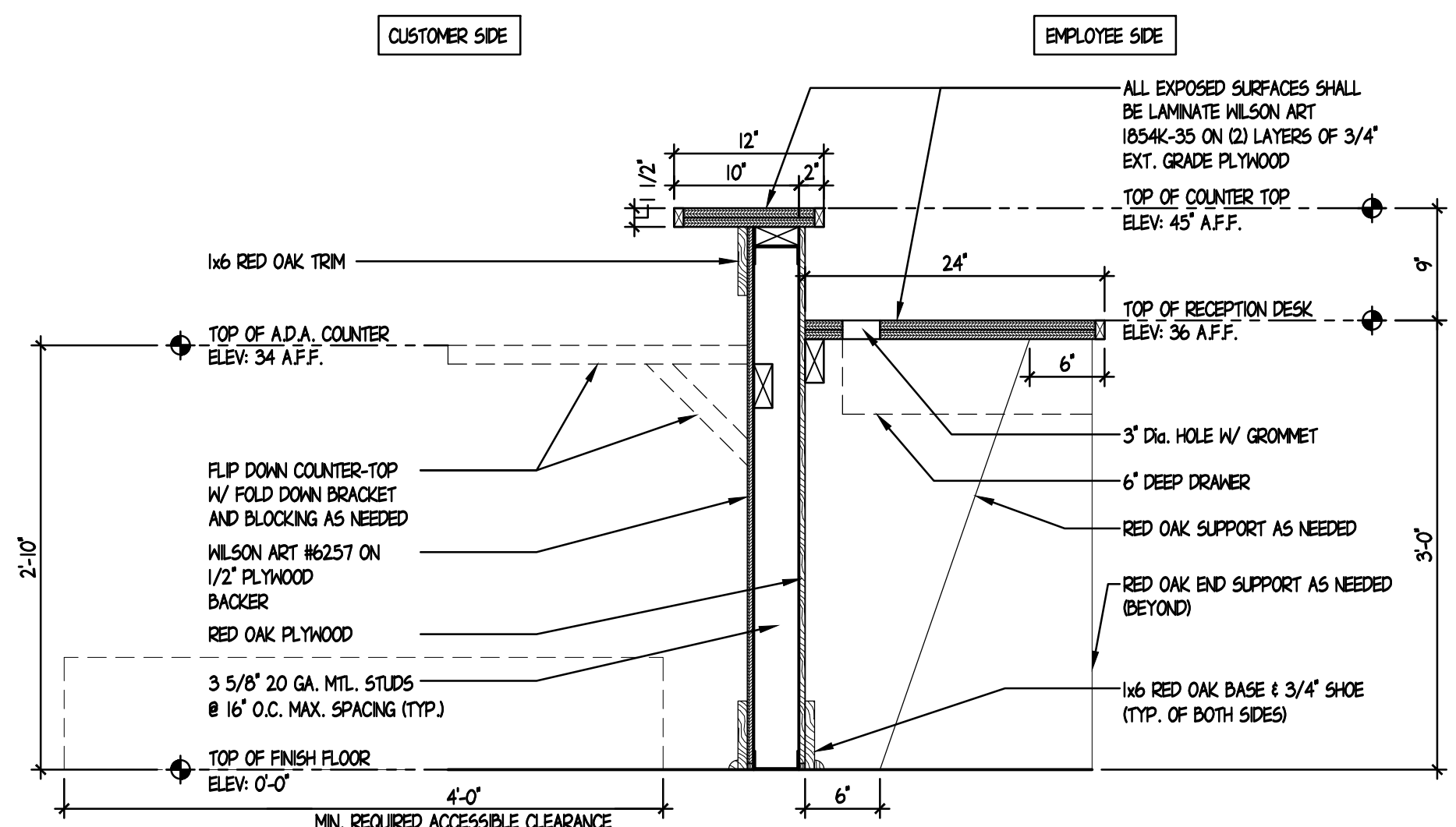
DATE: 2017-09-21

SHEET NO.

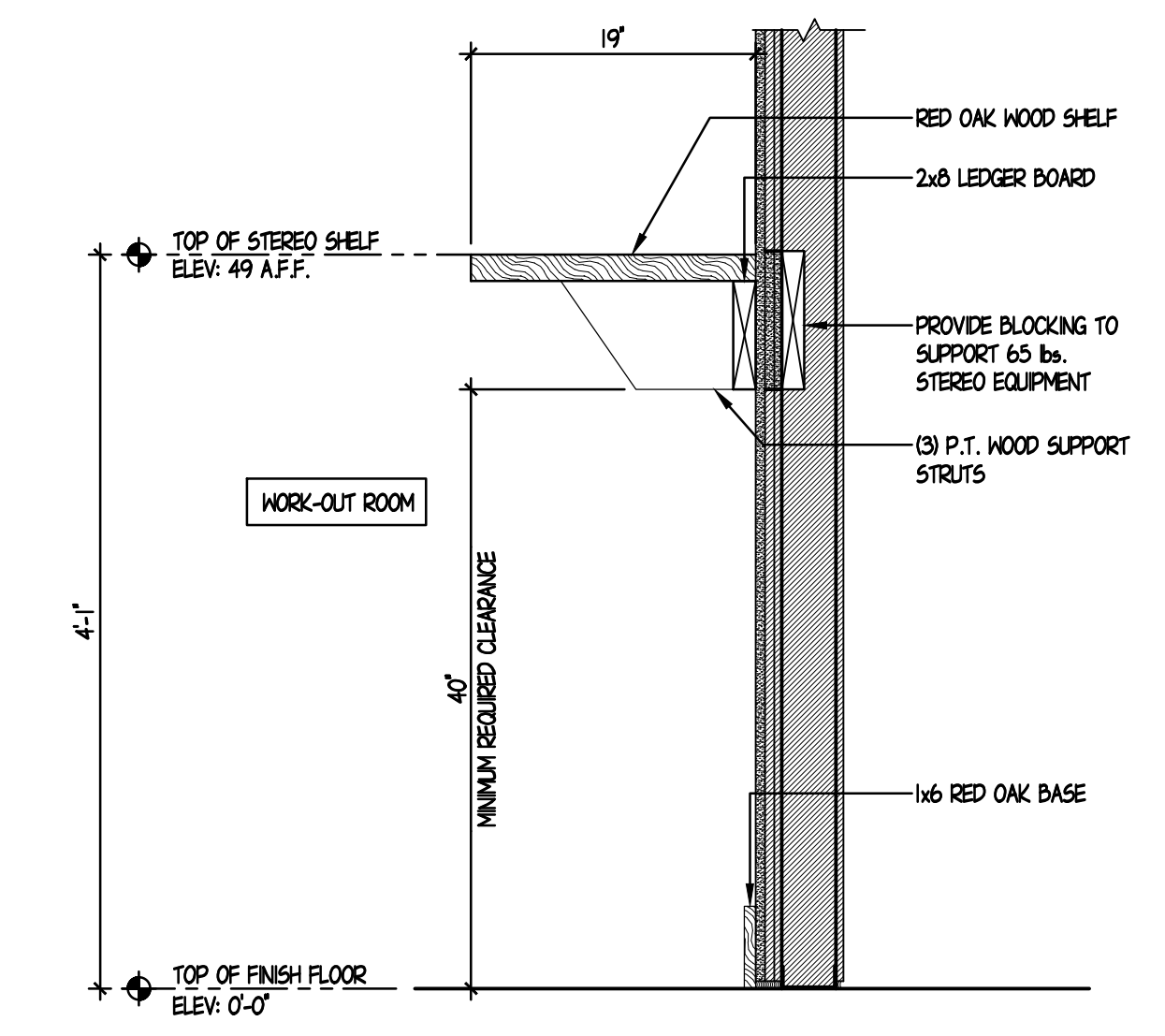
A-1.1

SHEET 1.1 OF 7

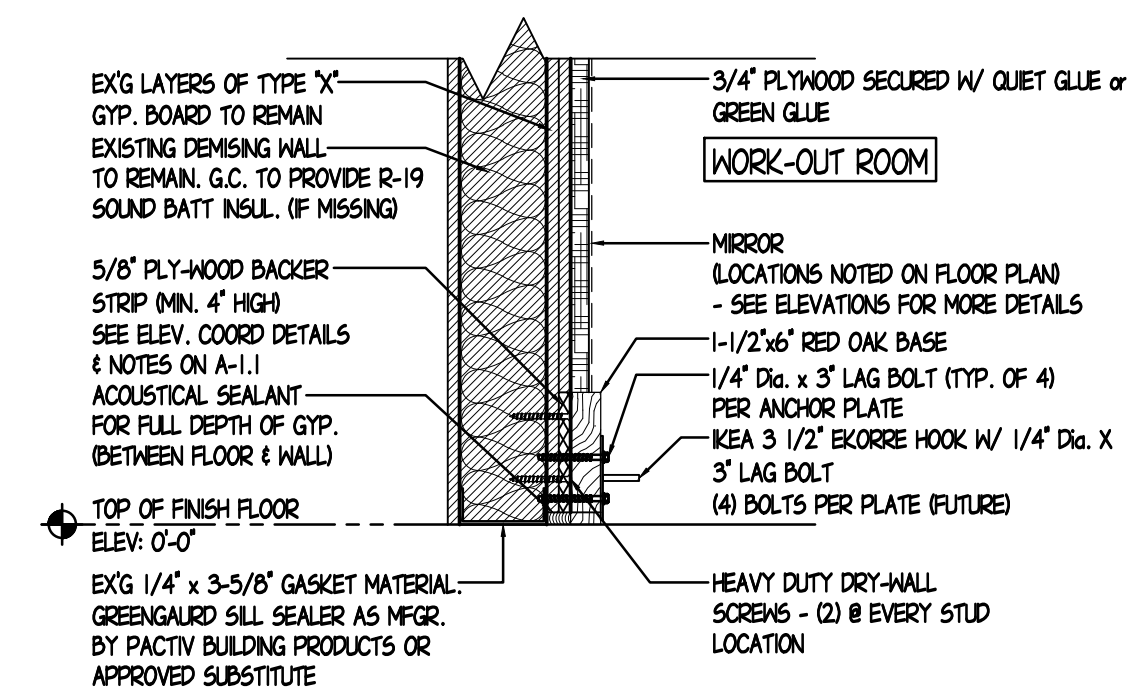
THE ARCHITECT SHALL NOT BE RESPONSIBLE FOR ACTUAL CONDITIONS, CONSTRUCTION AND/OR USE THEREOF. THIS DRAWING IS TO CONVEY DESIGN INTENTIONS AND/OR CODE COMPLIANCE ONLY. USE OF THESE DRAWINGS IMPLIES AGREEMENT WITH THESE CONDITIONS. THE CONTRACTOR IS TO VERIFY ALL DIMENSIONS.



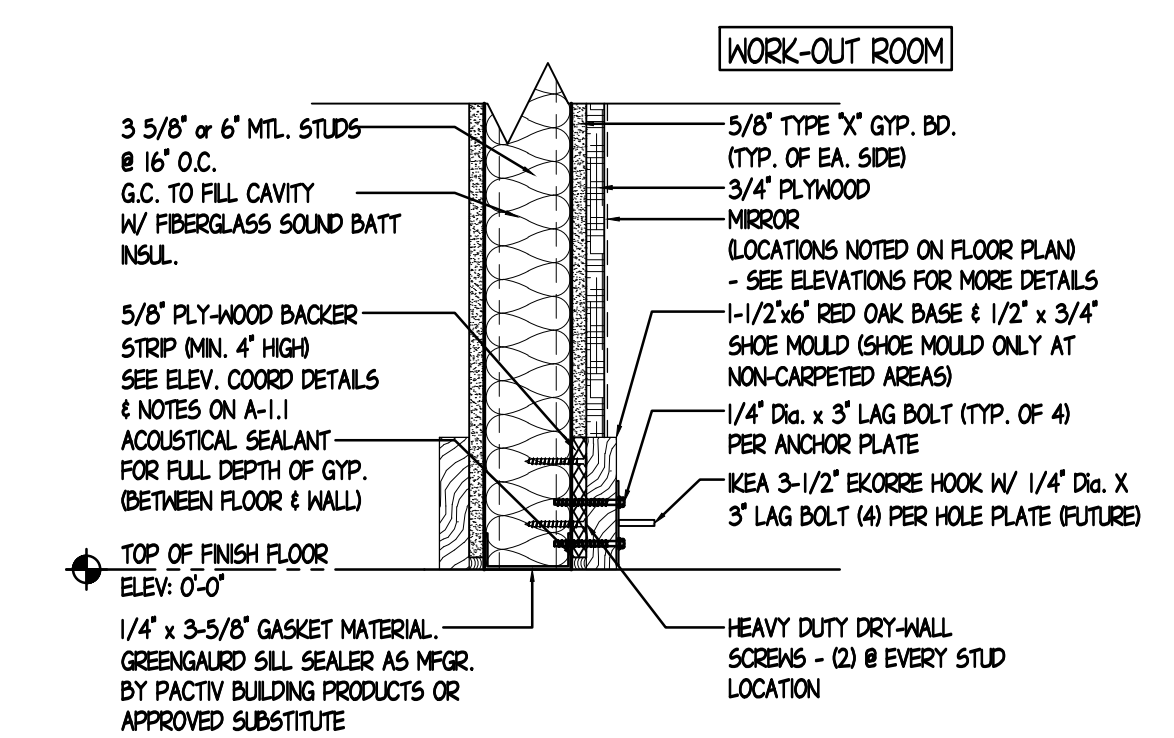
1 RECEPTION DESK SECTION
SCALE: 1" = 1'-0"



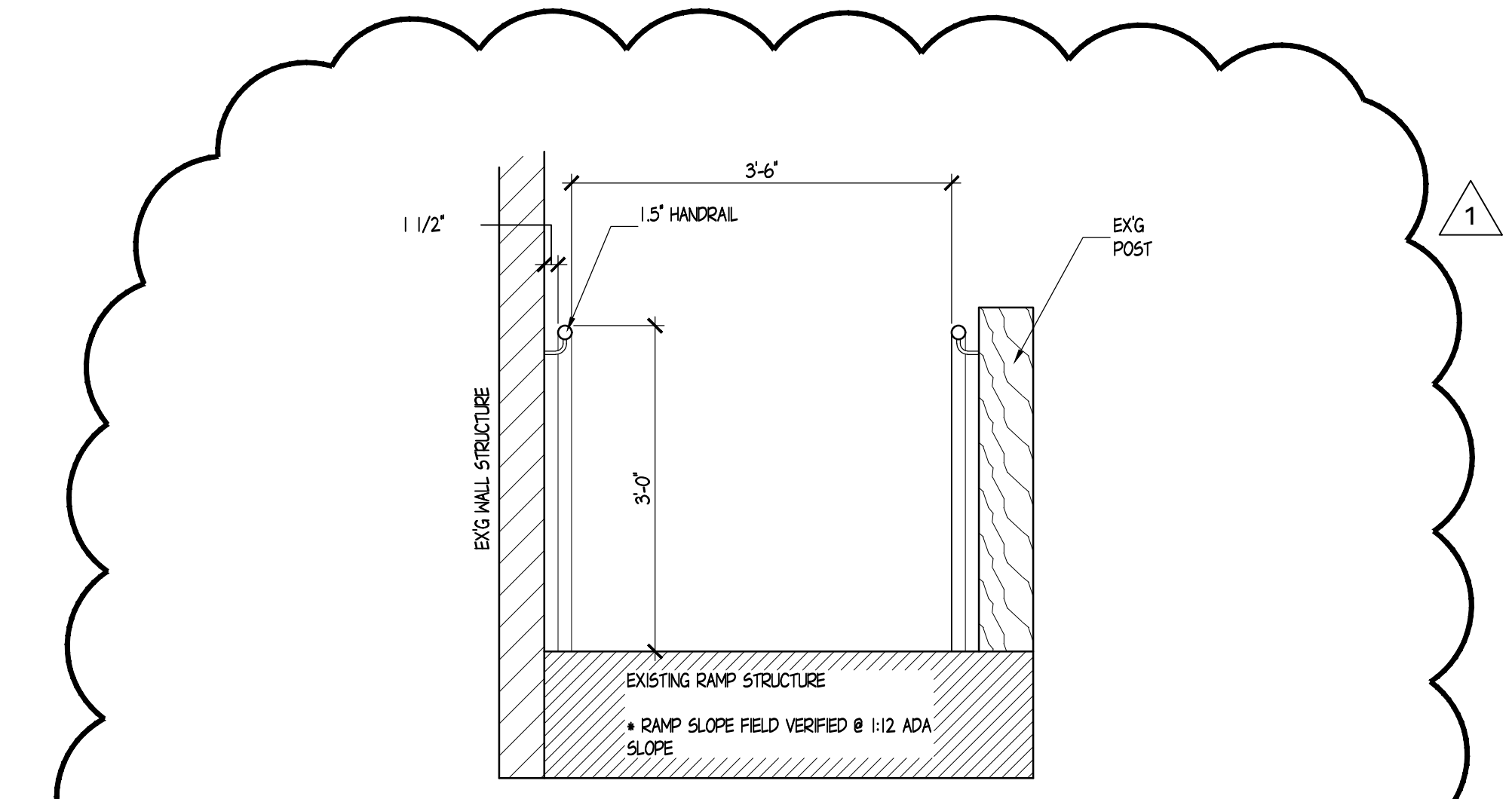
2 STEREO SHELF DETAIL
SCALE: 1" = 1'-0"



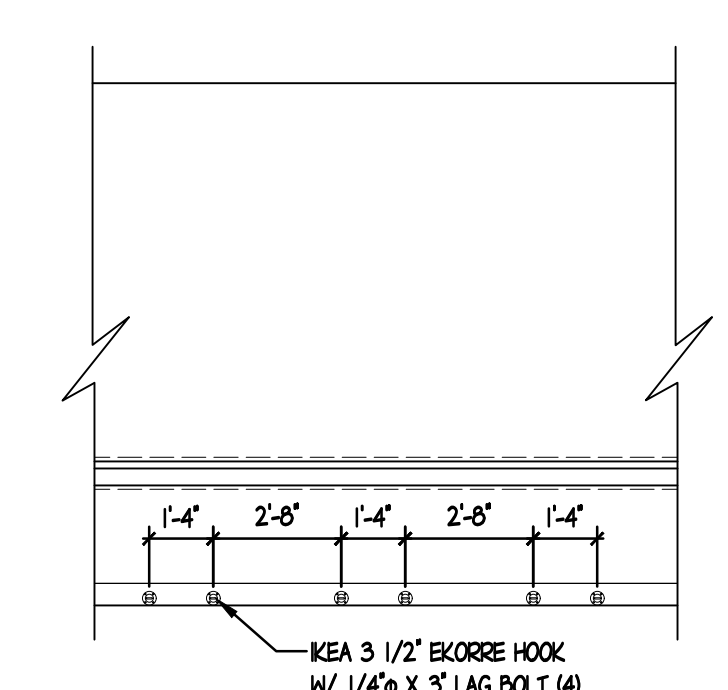
4 TYP. DEMISING WALL DETAIL
SCALE: 1-1/2" = 1'-0"



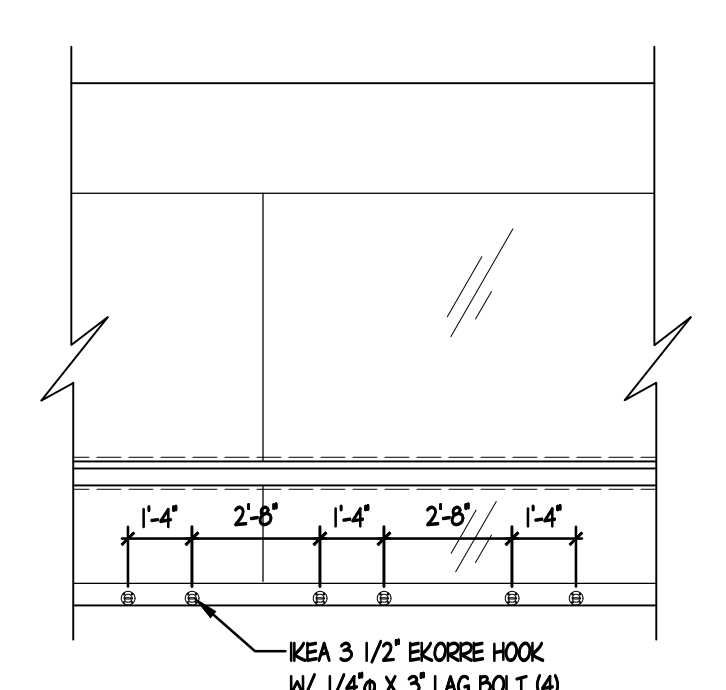
5 TYP. STUDIO PARTITION WALL DETAIL
SCALE: 1-1/2" = 1'-0"



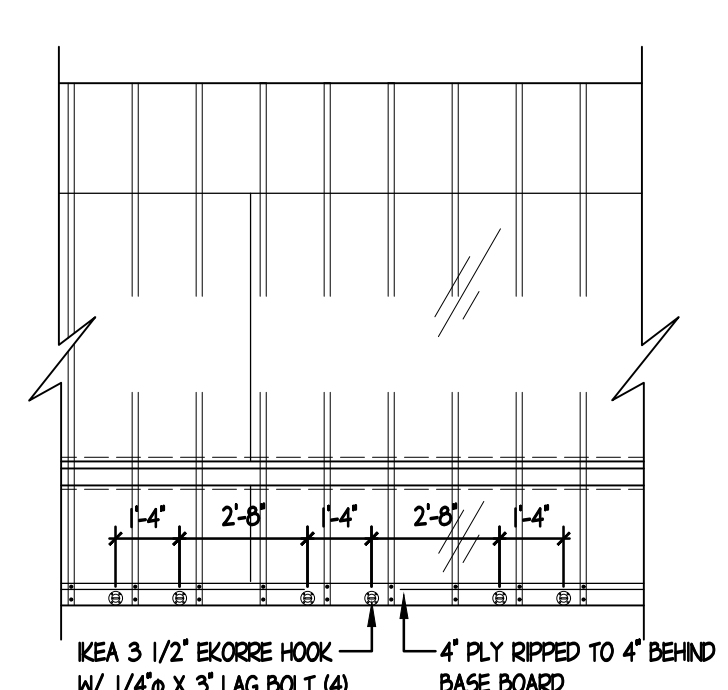
9 EXISTING RAMP DETAILS
SCALE: 3/4" = 1'-0"



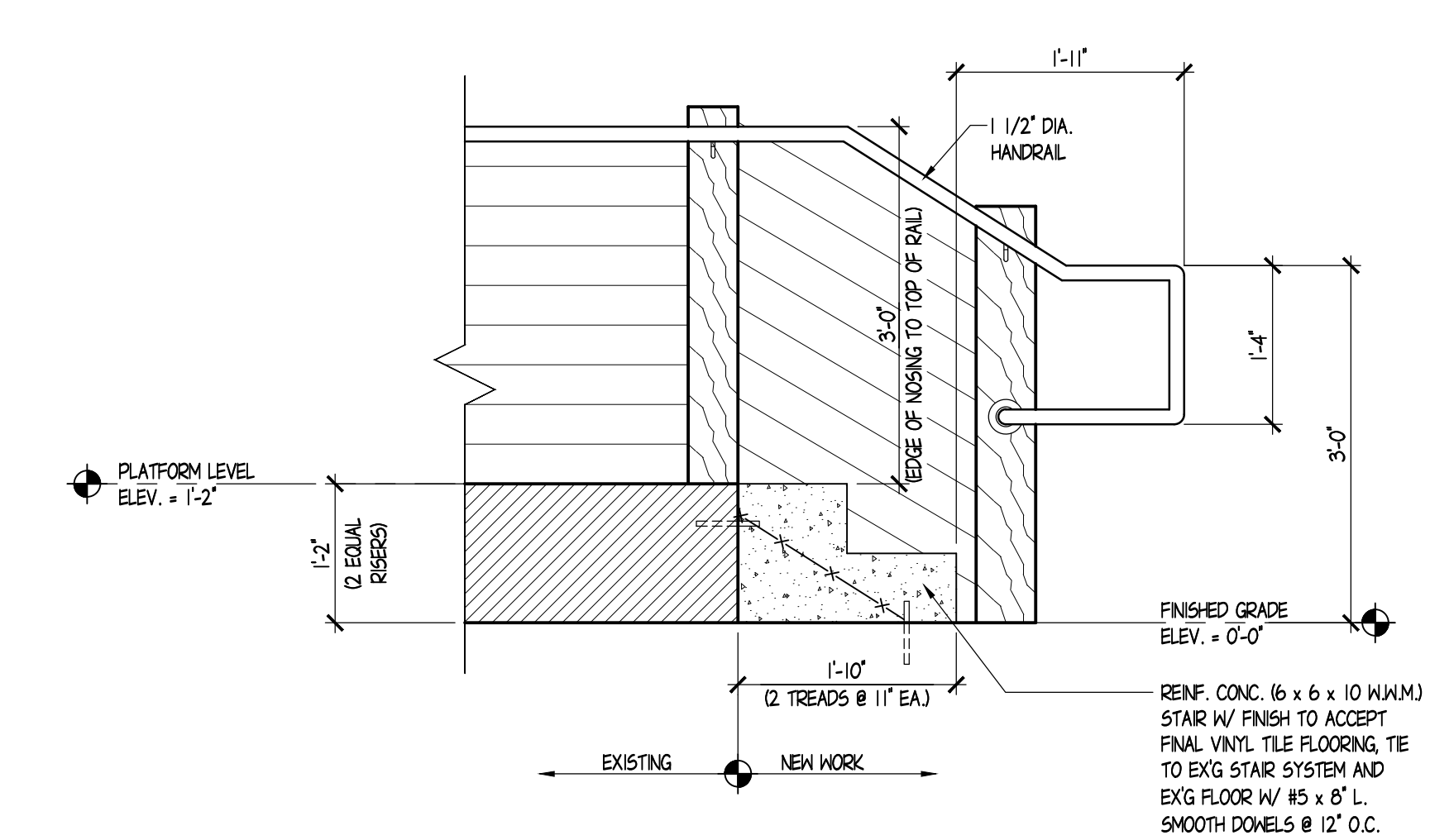
6 PILATES DETAILS - NON MIRROR WALL
SCALE: 1/4" = 1'-0"



7 PILATES DETAILS - MIRROR WALL
SCALE: 1/4" = 1'-0"



8 PILATES DETAILS - ATTACHMENT DETAILS
SCALE: 1/4" = 1'-0"



10 NEW STAIR DETAILS
SCALE: 3/4" = 1'-0"