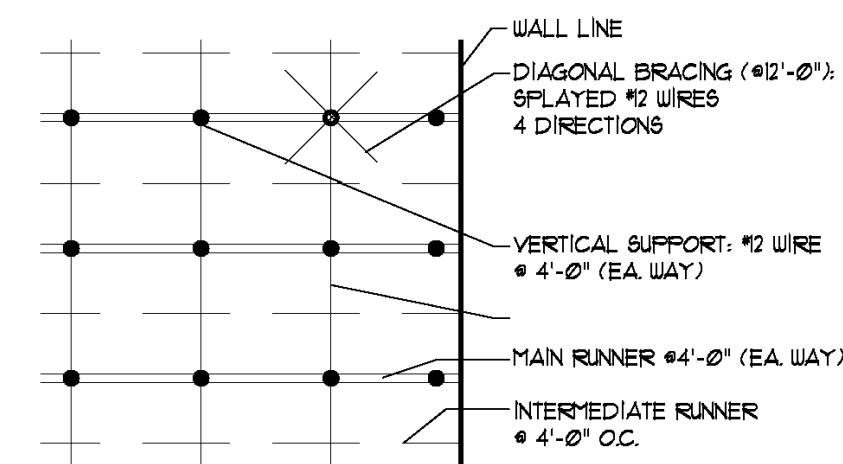
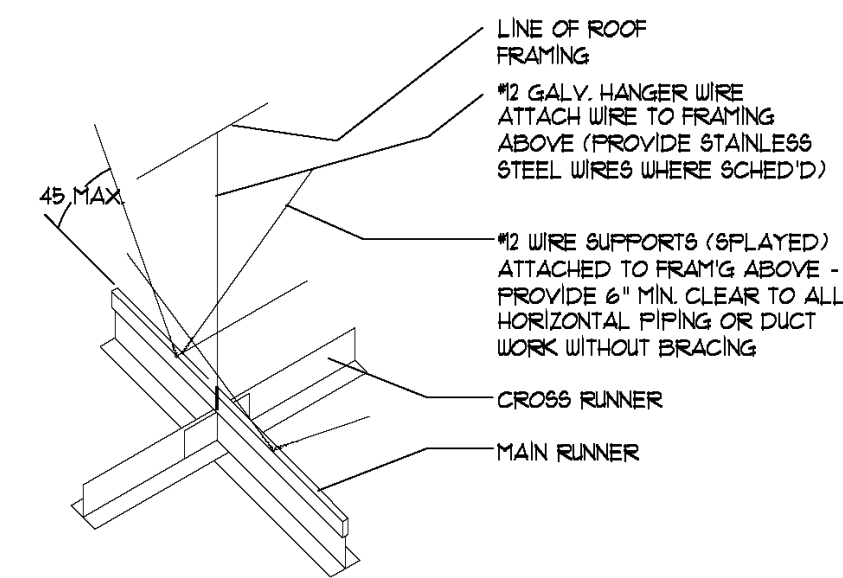
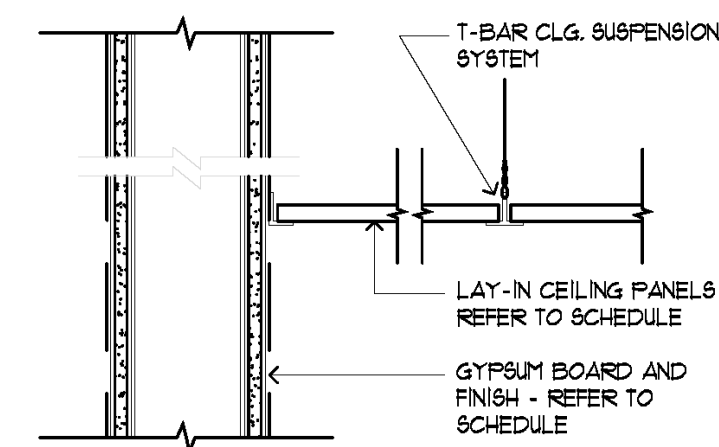


LEGEND					
	2x4 FLOURESCENT 'NIGHT LIGHT' SEE ELEC. LIGHTING PLAN FOR DETAILS		EXHAUST FAN SEE PLAN FOR FIXTURE DETAILS		LIGHT FIXTURE BY OWNER INSTALLED BY G.C.
	2x4 FLOURESCENT SEE ELEC. LIGHTING PLAN FOR DETAILS		EXIT LIGHT W/ BATTERY BACK-UP SEE ELEC. LIGHTING PLAN FOR DETAILS		2x2 FLOURESCENT SEE ELEC. LIGHTING PLAN FOR DETAILS
	2x2 SUPPLY AIR GRILL SEE PLAN FOR FIXTURE DETAILS		EMERGENCY LIGHT W/ BATTERY BACK-UP SEE ELEC. LIGHTING PLAN FOR DETAILS		TRACK LIGHTING (LENGTH VARIES IN 2' INCREMENTS - SEE ELEC. LIGHTING PLAN)
	2x2 RETURN AIR GRILL SEE PLAN FOR FIXTURE DETAILS		A.C.T. (2x2 OR 2x4) - SEE FINISH SCHEDULE FOR DETAILS		CAN LIGHT SEE ELEC. LIGHTING PLAN FOR DETAILS
	PAINTED GYP. BD. CEILING		REMOTE DISCHARGE DIAL HEAD SEE ELEC. LIGHTING PLAN FOR DETAILS		SPRINKLER HEAD - PRELIMINARY LOCATIONS SHOWN FOR REF. ONLY
					CEILING STARTING POINT



NOTE:
1. SUPPORT EACH LIGHT FIXTURE INDEPENDENTLY OF CEILING GRID WITH (1) #2 WIRE AT 2 OPPOSITE CORNERS.
2. WIRES SHALL BE ATTACHED TO GRID AND STRUCTURE SO THAT THEY CAN SUPPORT 500 LB. (MIN) OR ACTUAL LOAD (WHICHEVER IS GREATER) WITH A SAFETY FACTOR OF 2.

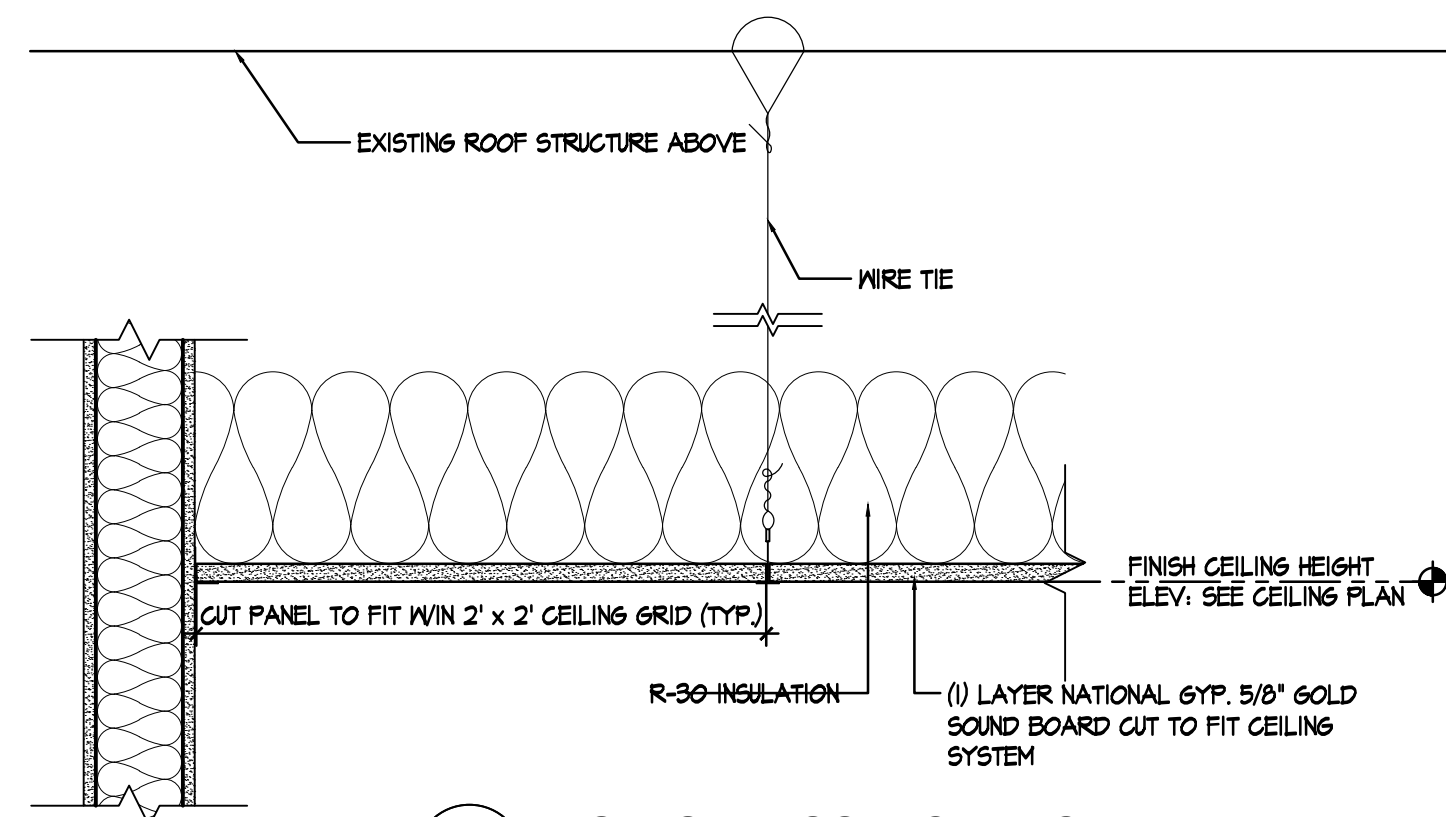
LAY-IN INTERIOR CEILING BRACING DTL.
NOT TO SCALE



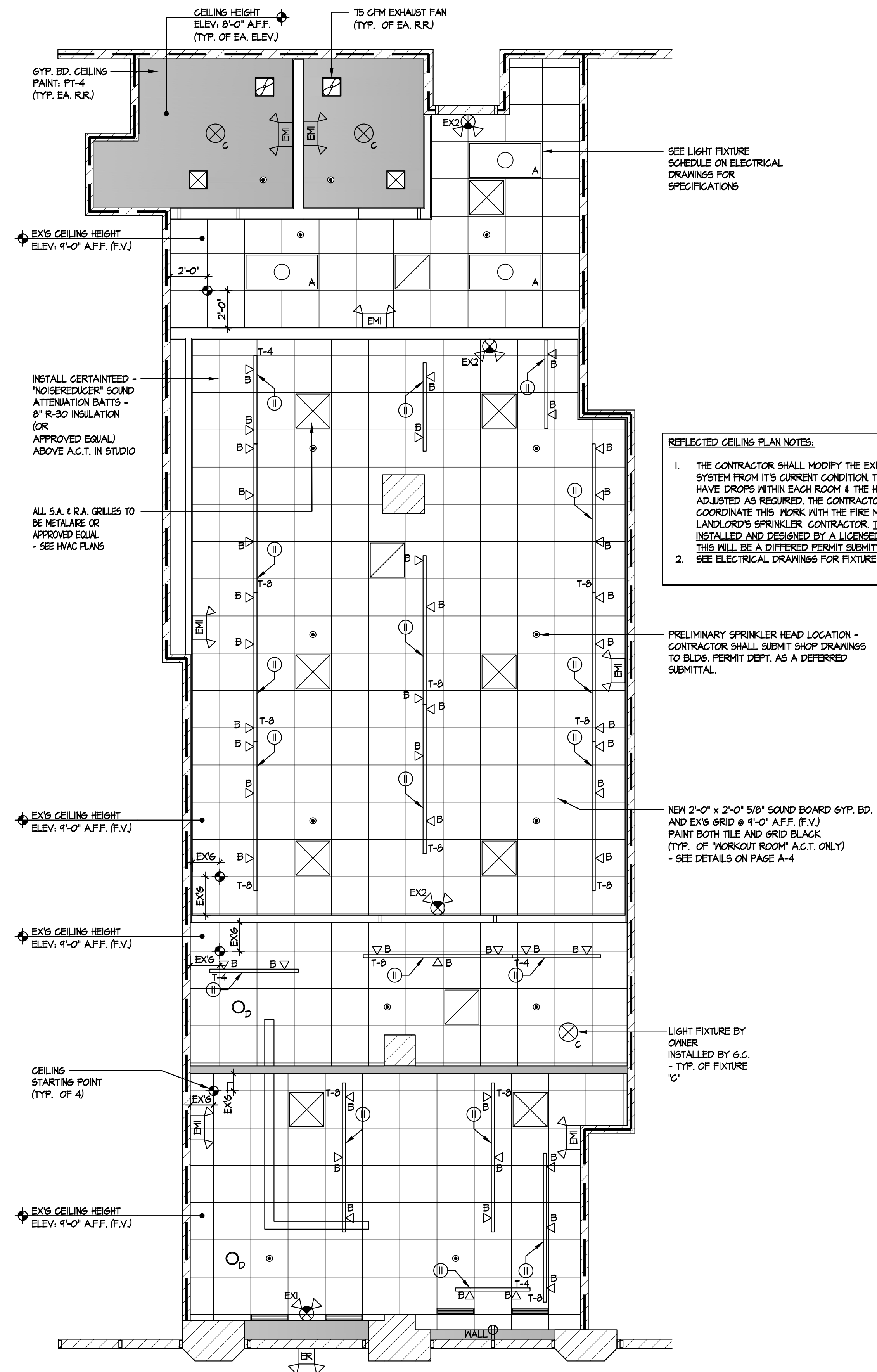
LAY-IN CEILING DETAIL
NOT TO SCALE

LAY-IN CEILING SYSTEM NOTES:

- METAL SUSPENSION SYSTEM FOR ACOUSTICAL TILE AND LAY-IN CEILING SHALL CONFORM TO THE REQUIREMENTS OF ASTM C635-Ø1 FOR INTERMEDIATE DUTY SYSTEMS.
- INSTALLATION OF METAL CEILING SUSPENSION SYSTEM FOR ACOUSTICAL TILE AND LAY-IN CEILING SHALL CONFORM TO THE REQUIREMENT OF ASTM C636-96.
- MAIN RUNNERS @ 4'-Ø" O.C. CROSS RUNNERS @ 2'-Ø" O.C.
- VERTICAL HANGERS TO BE MAX. 8" FROM WALLS.
- DO NOT ATTACH TO THE ROOF DECK ABOVE



2 "WORKOUT ROOM" CEILING DETAIL
SCALE: 1-1/2" = 1'-0"
* CONTRACTOR TO PROVIDE A PRICE BASED ON DETAIL 2/PAGE 1.



1 REFLECTED CEILING PLAN
SCALE: 1/4" = 1'-0"



GERALD P. NOE ARCHITECT
MAINE REGISTRATION NO. 4035

399 LUCERNE DRIVE
SPARTANBURG, SC 29302
P: 864.583.2215 F: 864.583.2265
mail@gpnarcht.com

CHECKED BY: GPN
DRAWN BY: JMF, DKH

THIS DRAWING IS AN INSTRUMENT OF SERVICE AND SOLE PROPERTY OF THE ARCHITECT, AND SHALL NOT BE USED IN ANY WAY, WHATSOEVER, WITHOUT THE WRITTEN PERMISSION OF THE ARCHITECT. IT SHALL BE RETURNED TO THE ARCHITECT UPON DEMAND.
COPYRIGHT 2017
ALL RIGHTS RESERVED



DATE: 2017-09-21

REVISIONS:

NO.	DATE	DESCRIPTION	BY

CLIENT NAME:



J+J FIT, LLC
OWNER: JAMIE CALENDRA
18 PARKER AVENUE
WARREN, RI 02885
EMAIL: JCALENDRA@PUREBARRE.COM

PROJECT NAME:



INTERIOR UP-FIT

TWO PORTLAND SQUARE
477 FORE STREET - SUITE 128
PORTLAND, MAINE 04101

SHEET TITLE:

REFLECTED CEILING PLAN & DETAILS

PROJECT NUMBER: 17-A094

DATE: 2017-09-21

SHEET NO.

A-4

THE ARCHITECT SHALL NOT BE RESPONSIBLE FOR ACTUAL CONDITIONS, CONSTRUCTION AND/OR USE THEREOF. THIS DRAWING IS TO CONVEY DESIGN INTENTIONS AND/OR CODE COMPLIANCE ONLY. USE OF THESE DRAWINGS IMPLIES AGREEMENT WITH THESE CONDITIONS. THE CONTRACTOR IS TO VERIFY ALL DIMENSIONS.