

LEGEND

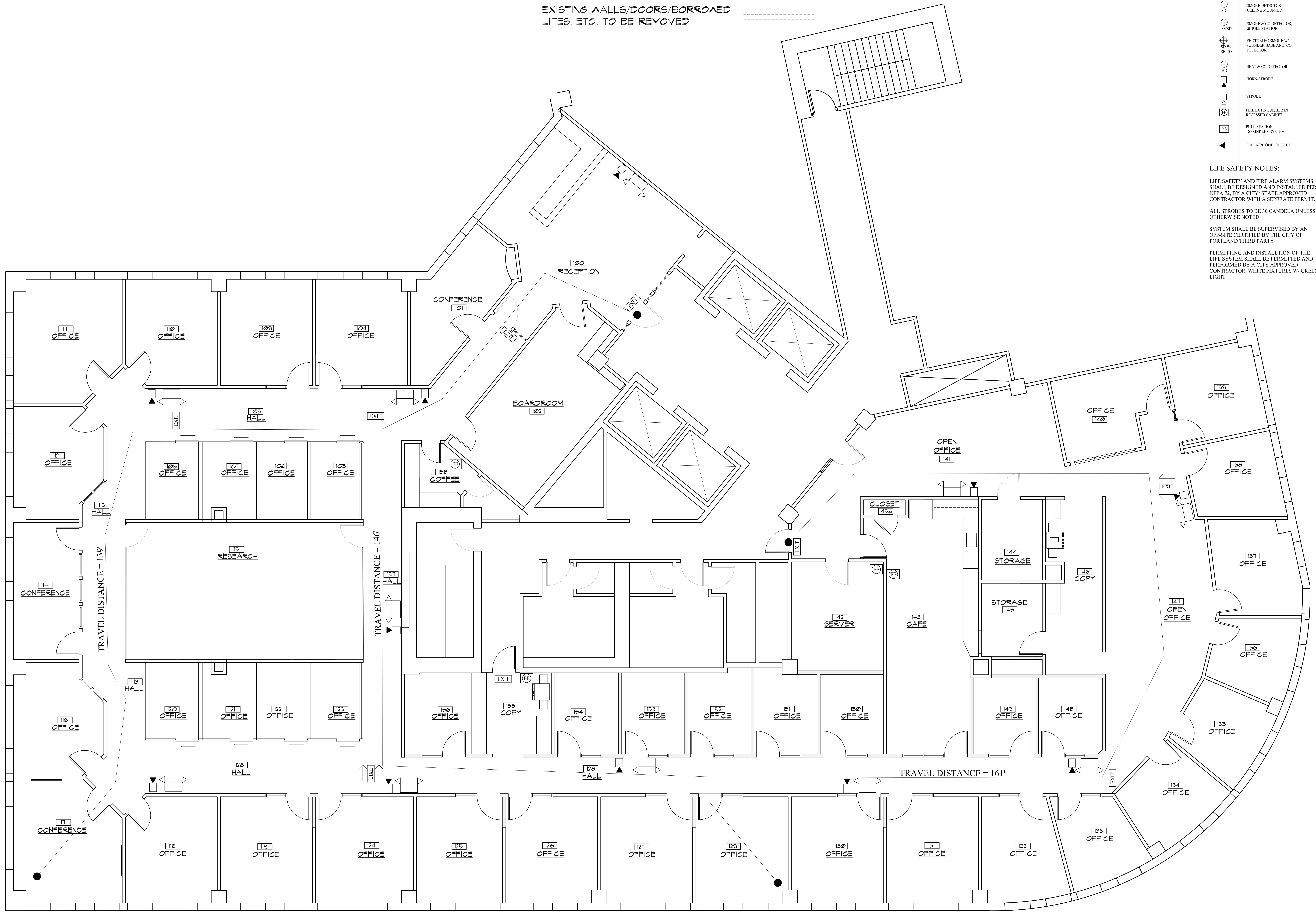
- NEW STUD WALL
- EXISTING STUD WALL
- EXISTING WALLS/DOORS/BORROWED LITES, ETC. TO BE REMOVED

LIFE SAFETY LEGEND:

- EMERGENCY BACKUP LIGHT
- EXIT LIGHT
- SMOKE DETECTOR
- SMOKE DETECTOR CEILING MOUNTED
- SSSD
- SMOKE & CO DETECTOR, SINGLE STATION
- PHOTOELECTRIC SMOKE W/ SENSER BASE AND CO DETECTOR
- HEAT & CO DETECTOR
- HORN-STROBE
- STROBE
- FIRE EXTINGUISHER IN RECESSED CABINET
- PULL STATION - SPRINKLER SYSTEM
- DATAPHONE OUTLET

LIFE SAFETY NOTES:

LIFE SAFETY AND FIRE ALARM SYSTEMS SHALL BE DESIGNED AND INSTALLED PER NFPA 72 BY A CITY/STATE APPROVED CONTRACTOR WITH A SEPERATE PERMIT.
 ALL STROBES TO BE 30 CANDELA UNLESS OTHERWISE NOTED.
 SYSTEM SHALL BE SUPERVISED BY AN OFF-SITE CERTIFIED BY THE CITY OF PORTLAND THIRD PARTY
 PERMITTING AND INSTALLATION OF THE LIFE SYSTEM SHALL BE PERMITTED AND PERFORMED BY A CITY APPROVED CONTRACTOR, WHITE FIXTURES W/ GREEN LIGHT



LIFE SAFETY PLAN
SCALE: 1/4" = 1'-0"

PERMIT SET: JULY 14, 2017

LIFE SAFETY PLAN

REVISIONS	DATE
	MAY 2017
PROJECT	HM PAYSON
DRAWN BY	MSB
CHECK BY	HP