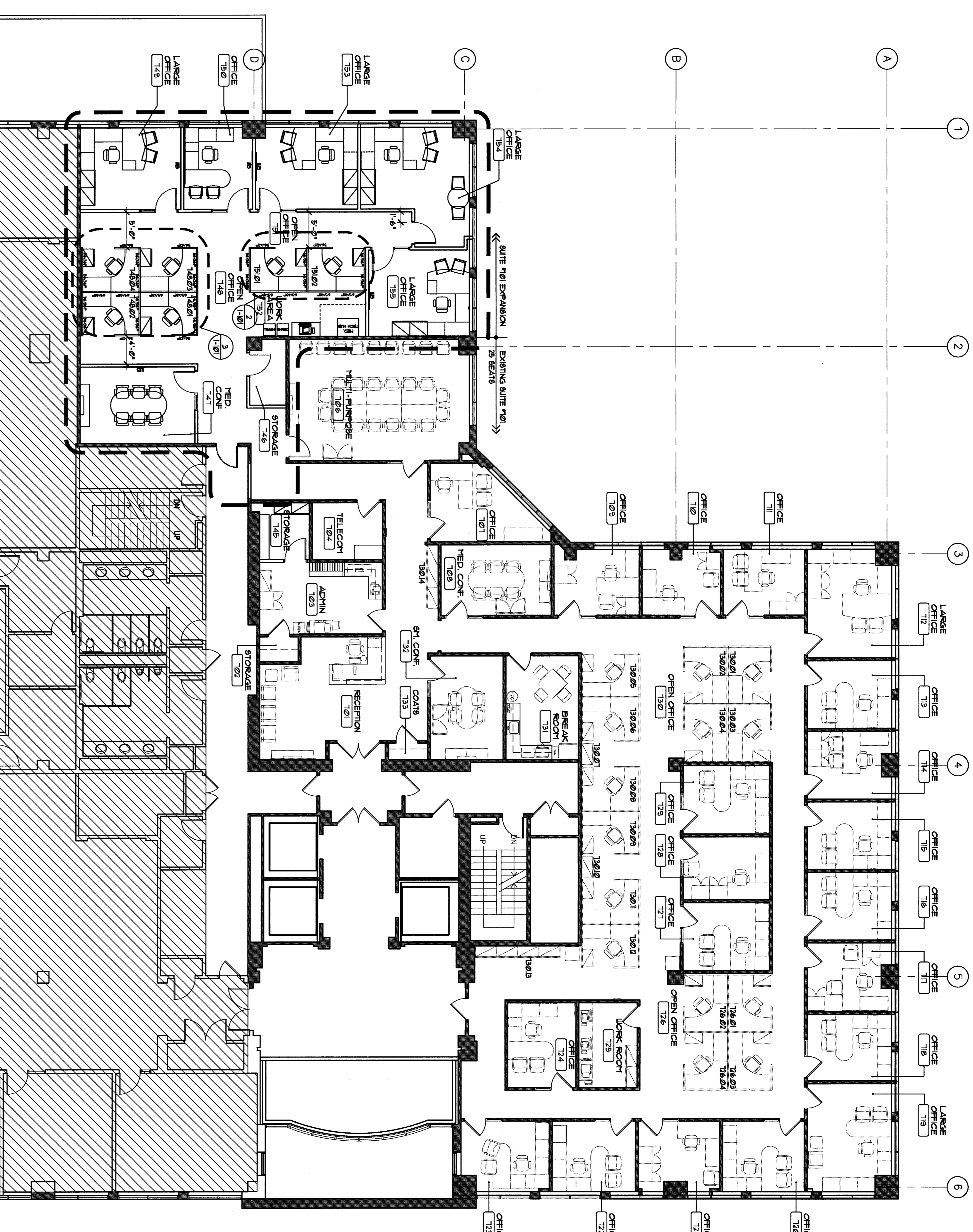
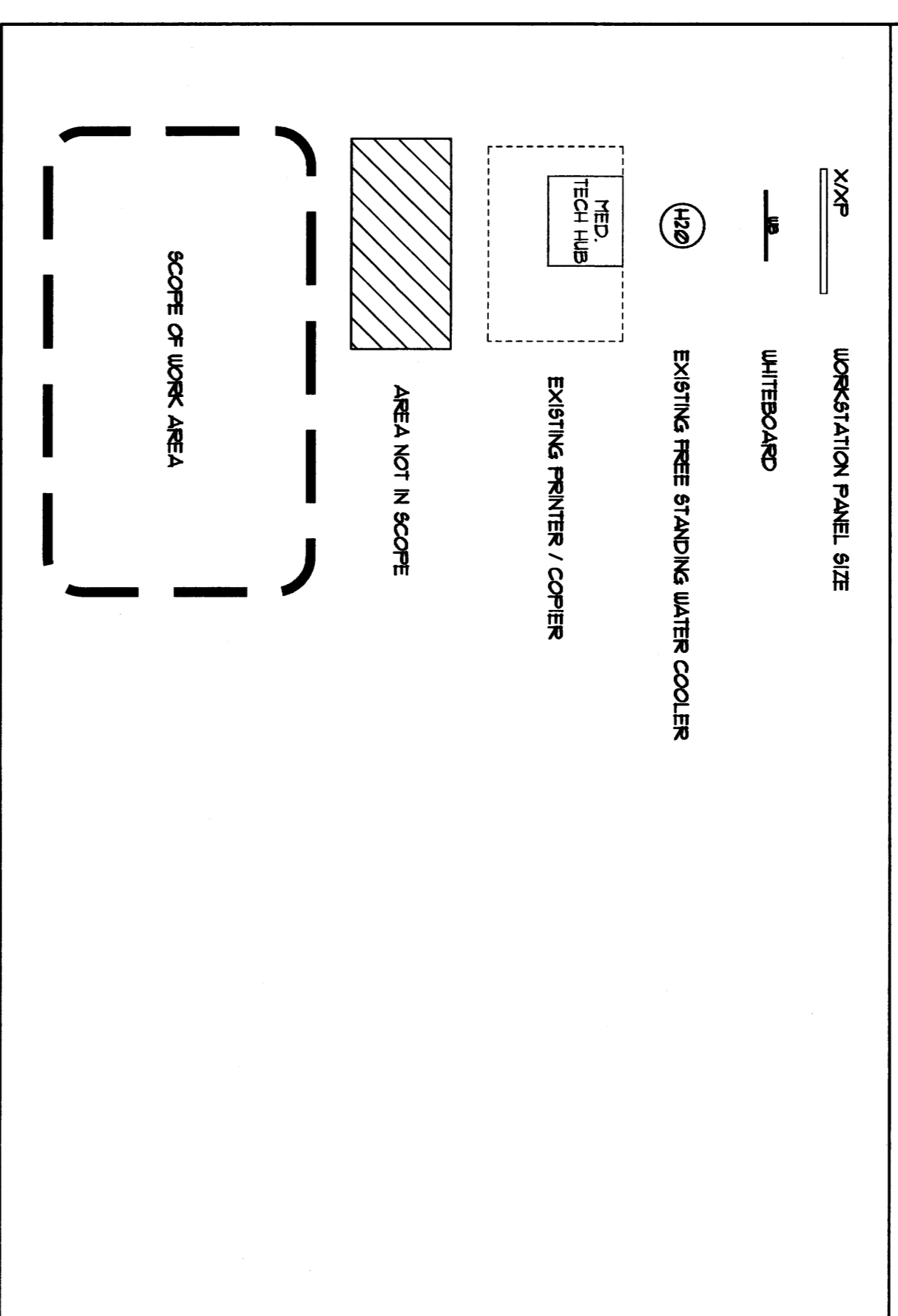


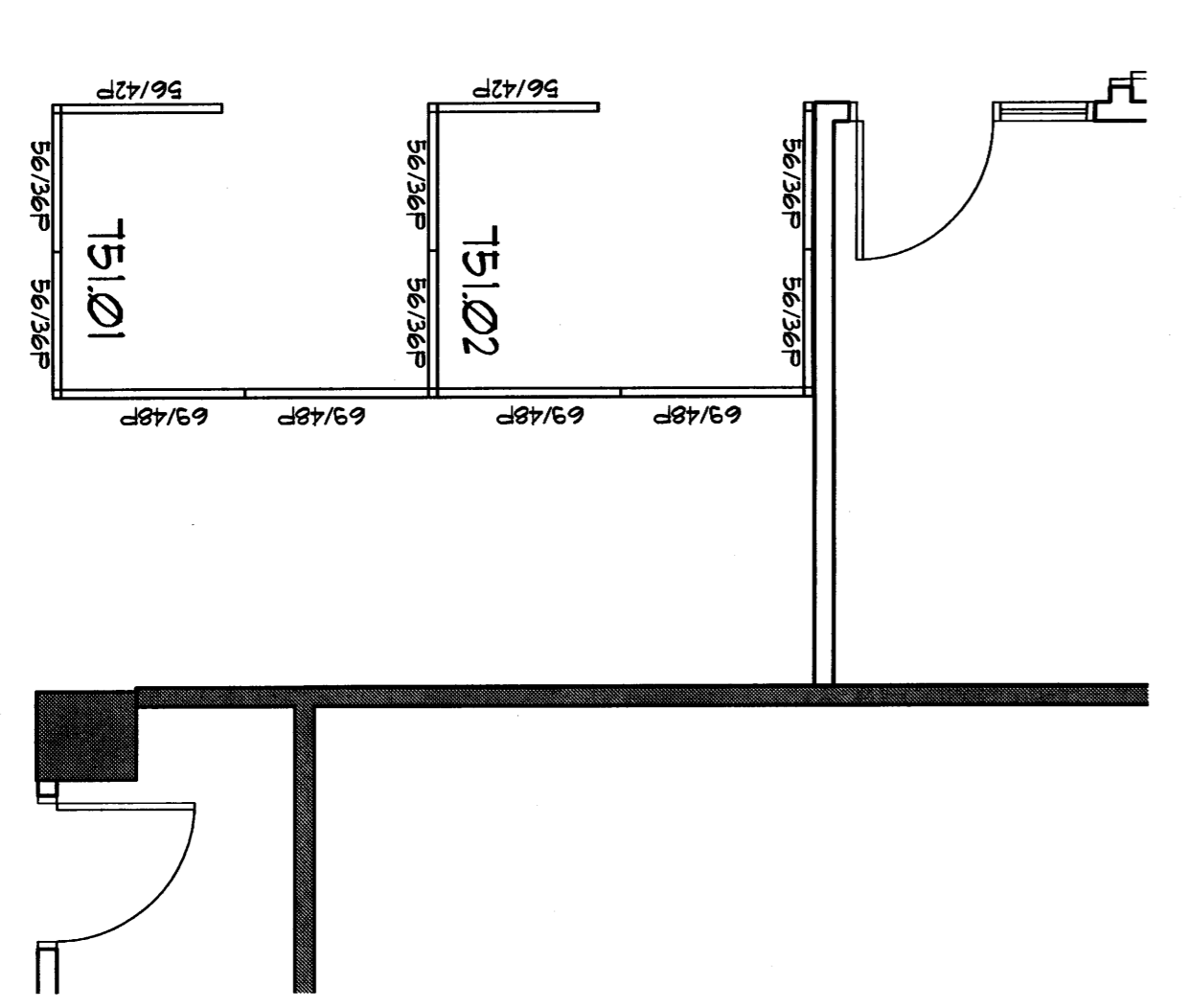
FURNITURE PLAN GENERAL NOTES

1. THIS SHEET IS FOR DESIGN INTENT AND FINISHES. AS-BUILT CONDITIONS REFER TO FURNITURE VENDORS DRAWINGS FOR FULL SCOPE OF WORK FOR FURNITURE INSTALLATION.
2. ALL FURNITURE TO BE SUPPLIED AND INSTALLED BY TENANT.
3. BREAK ROOM BULLETIN BOARD SUPPLIED AND INSTALLED BY GC AT 36" AFF.
4. WHITEBOARDS IN PRIVATE OFFICES SUPPLIED AND INSTALLED BY TENANT AT 42" AFF.
5. FIRST AID KIT SUPPLIED BY TENANT AND INSTALLED BY GC AT 42" AFF. IN BREAK ROOM.

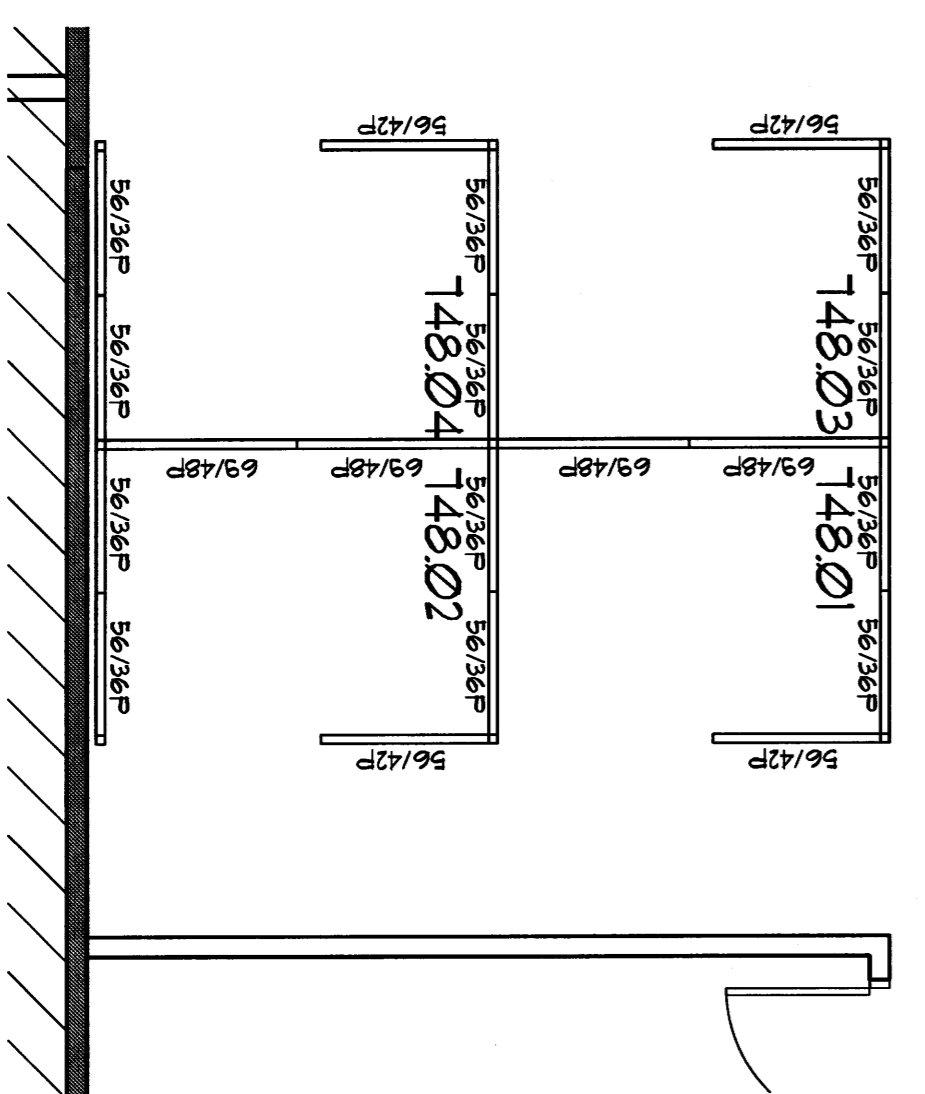
FURNITURE PLAN LEGEND



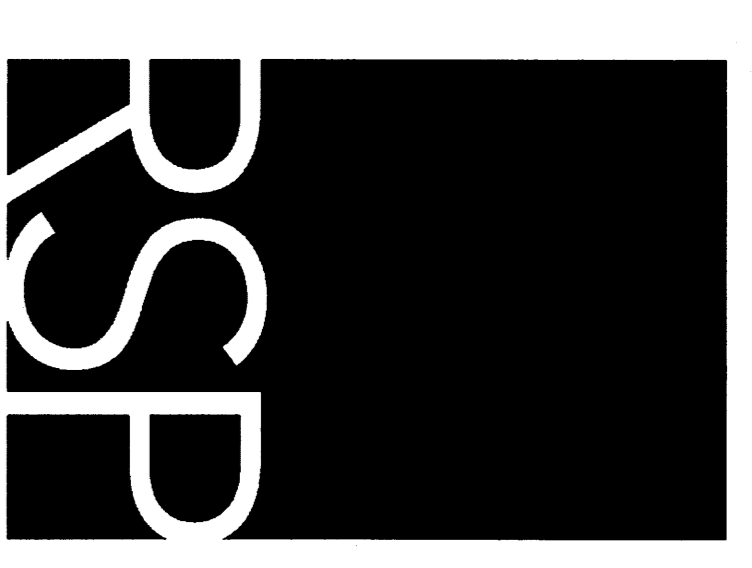
1 LEVEL 1 FURNITURE COORDINATION PLAN
1/4" = 1'-0"



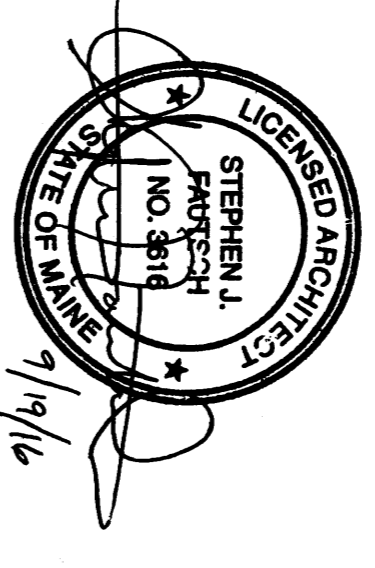
2 LEVEL 1 FURNITURE PANEL COORDINATION PLAN
1/4" = 1'-0"



3 LEVEL 1 FURNITURE PANEL COORDINATION PLAN
1/4" = 1'-0"



RSP Architects, Ltd.
 1220 Main Street NE
 Minneapolis, MN 55419-1500
 Phone: 612.877.7100
 Fax: 612.877.7101
 Website: www.rsparchitect.com



Signature: Stephen J. Faustich
 Registration No.: 8114
 Expiration Date: 6/30/17
 Project No.:



AMERIPRISE FINANCIAL
 2 PORTLAND SQUARE
 SUITE # 701
 PORTLAND, ME 04101

Project No.: 1762108022
 Drawn By: RJP
 Checked By: KSL
 Date: 9/16/16

NOTICE: The design shown and described herein is the property of RSP Architects, Ltd. and shall not be used, copied, or otherwise reproduced, in whole or in part, without the written consent of RSP Architects, Ltd. The design is provided for the project and is not to be used for any other project without the written consent of RSP Architects, Ltd. The design is provided for the project and is not to be used for any other project without the written consent of RSP Architects, Ltd.

No.	Date	Description
1	9/16/16	REVISED SET