

Page 7 Fan Detail

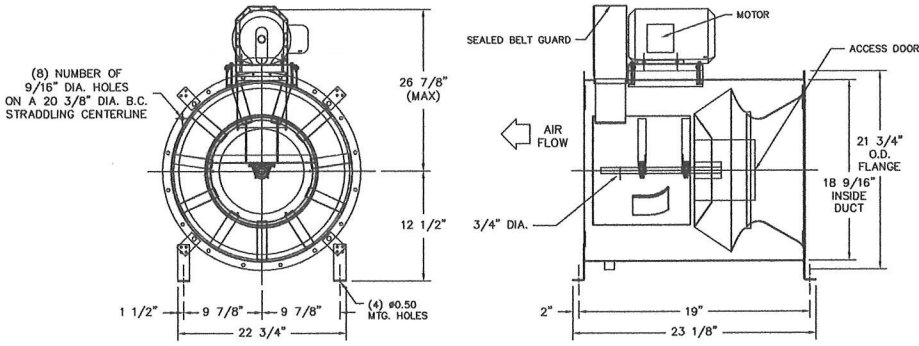
EXHAUST FAN INFORMATION - Job#2552917

FAN UNIT NO.	TAG	FAN UNIT MODEL #	CFM	ESP.	RPM	H.P.	B.H.P.	Ø	VOLT	FLA	WEIGHT (LBS.)	SDNES
1		RMFI135CA	1350	1.650	1776	1.500	0.7380	1	230	10.2	202	18

FAN OPTIONS

FAN UNIT NO.	TAG	OPTION (Qty. - Descr.)
1		1 - Ceiling Spring Isolators With Mounting Brackets - RMFI / BMFI 135.
		1 - 3 Year Extended Motor Warranty
		1 - Extra Set of Belts
		1 - Companion Flange Outlet - RMFI / BMFI 135.
		1 - Companion Flange Inlet - RMFI / BMFI 135.
		1 - Disconnect Switch - Used On All RMFI, BMFI & DMFI Fans - Disconnect Is NEMA1 For Indoor Use Only - Disconnect Switch Ships Loose. Single & Three Phase Option.

FAN #1 RMFI135CA - EXHAUST FAN



FEATURES:

- LEVEL II CONSTRUCTION - UL 762.
- HIGH PRESSURE.
- STRAIGHT THROUGH AIR FLOW.
- WHEELS BACKWARD INCLINED, NON-OVERLOADING.
- WHEELS STATICALLY AND DYNAMICALLY BALANCED.
- HEAVY GAUGE STEEL CONSTRUCTION.
- MULTIPLE ACCESS DOORS FOR WHEEL CLEANING.
- BELT TUBES AND GUARDS.
- EXTENDED LUBE LINES.
- 2" GREASE DRAIN.

OPTIONS

- CEILING SPRING ISOLATORS WITH MOUNTING BRACKETS - RMFI / BMFI 135.
- 3 YEAR EXTENDED MOTOR WARRANTY
- EXTRA SET OF BELTS
- COMPANION FLANGE OUTLET - RMFI / BMFI 135.
- COMPANION FLANGE INLET - RMFI / BMFI 135.
- DISCONNECT SWITCH - USED ON ALL RMFI, BMFI & DMFI FANS - DISCONNECT IS NEMA1 FOR INDOOR USE ONLY - DISCONNECT SWITCH SHIPS LOOSE. SINGLE & THREE PHASE OPTION.

CUSTOMER APPROVAL TO MANUFACTURE:

Approved as Noted

Approved with ND Exception Taken

Revise and Resubmit

SIGNATURE _____

Your Title _____ Date _____



JOB Lost Cupcake	
LOCATION Lewiston, ME,	
DATE 2/1/2016	JOB # 2552917
DWG # 3	DRAWN BY BFC-21
REV.	SCALE 3/8" = 1'-0"