

DOOR SCHEDULE												
NO.	DOOR TYPE	MAT.	FIN.	WIDTH	HEIGHT	THICK.	FRAME TYPE	MAT.	FIN.	HDWR.	FIRE RATING	NOTES
100	EXG.	--	--	--	--	--	--	--	--	--	--	5
101	1	ALUM	FF	3'-0"	7'-0"	1 3/4"	A	ALUM	FF	HW-1	--	1
102	NOT USED	--	--	--	--	--	--	--	--	--	--	
103	NOT USED	--	--	--	--	--	--	--	--	--	--	
104	NOT USED	--	--	--	--	--	--	--	--	--	--	
105	4	WD-SC	NAT	3'-0"	7'-0"	1 3/4"	B	WD	PT	HW-2	--	2
106	--	--	--	3'-0"	7'-0"	--	B	HM	PT	--	--	3
107	2	WD-SC	NAT	3'-0"	7'-0"	1 3/4"	B	HM	PT	HW-3	--	
108	2	WD-SC	NAT	3'-0"	7'-0"	1 3/4"	B	HM	PT	HW-4	--	
109	3	WD-SC	NAT	PR 2'-0"	7'-0"	1 3/4"	B	WD	PT	HW-5	--	4
110	--	--	--	3'-0"	7'-0"	--	B	HM	PT	--	--	3
111	2	WD-SC	NAT	3'-0"	7'-0"	1 3/4"	B	HM	PT	HW-6	--	
112	NOT USED	--	--	--	--	--	--	--	--	--	--	
113	2	WD-SC	NAT	3'-0"	7'-0"	1 3/4"	B	HM	PT	HW-3	--	
114	2	WD-SC	NAT	3'-0"	7'-0"	1 3/4"	B	HM	PT	HW-3	--	
115	NOT USED	--	--	--	--	--	--	--	--	--	--	
116	3	WD-SC	NAT	PR 3'-0"	7'-0"	1 3/4"	B	WD	PT	HW-5	--	4
117	NOT USED	--	--	--	--	--	--	--	--	--	--	
118	NOT USED	--	--	--	--	--	--	--	--	--	--	
119	NOT USED	--	--	--	--	--	--	--	--	--	--	
120	NOT USED	--	--	--	--	--	--	--	--	--	--	
121	2	WD-SC	NAT	3'-0"	7'-0"	1 3/4"	B	HM	PT	HW-3	--	
122	2	WD-SC	NAT	3'-0"	7'-0"	1 3/4"	B	HM	PT	HW-3	--	
123	2	WD-SC	NAT	3'-0"	7'-0"	1 3/4"	B	HM	PT	HW-4	--	
124	2	WD-SC	NAT	3'-0"	7'-0"	1 3/4"	B	HM	PT	HW-2	--	
125	NOT USED	--	--	--	--	--	--	--	--	--	--	
126	2	WD-SC	NAT	3'-0"	7'-0"	1 3/4"	B	HM	PT	HW-3	--	
127	2	WD-SC	NAT	3'-0"	7'-0"	1 3/4"	B	HM	PT	HW-3	--	
128	2	WD-SC	NAT	3'-0"	7'-0"	1 3/4"	B	HM	PT	HW-3	--	
129	2	WD-SC	NAT	3'-0"	7'-0"	1 3/4"	B	HM	PT	HW-3	--	
130	2	WD-SC	NAT	3'-0"	7'-0"	1 3/4"	B	HM	PT	HW-3	--	
131	2	WD-SC	NAT	3'-0"	7'-0"	1 3/4"	B	HM	PT	HW-3	--	

MATERIAL/FINISH ABBREVIATIONS

- EXG EXISTING
- FF FACTORY FINISH
- NAT NATURAL FINISH
- PT PAINT
- SC SOLID CORE
- WD WOOD

HARDWARE

- HW-1 3 HINGES
- 1 PUSH-PULL SET
- 1 POWER OPERATOR
- 1 SET WEATHERSTRIP
- 1 THRESHOLD
- HW-2 1 SET POCKET DOOR HARDWARE
- HW-3 3 HINGES
- 1 LOCKSET
- 1 STOP
- 3 SILENCERS
- HW-4 3 HINGES
- 1 PRIVACY SET
- 1 STOP
- 3 SILENCERS
- HW-5 1 SET BYPASS DOOR HARDWARE
- HW-6 3 HINGES
- 1 PASSAGE SET
- 1 STOP
- 3 SILENCERS

NOTES

1. MATCH EXISTING STOREFRONT SYSTEM.
2. POCKET DOOR, WOOD JAMBS AND CASINGS.
3. HM CASING FRAME
4. BYPASSING DOORS, WOOD JAMBS AND CASINGS.
5. PROVIDE POWER OPERATOR AT EXISTING DOOR.

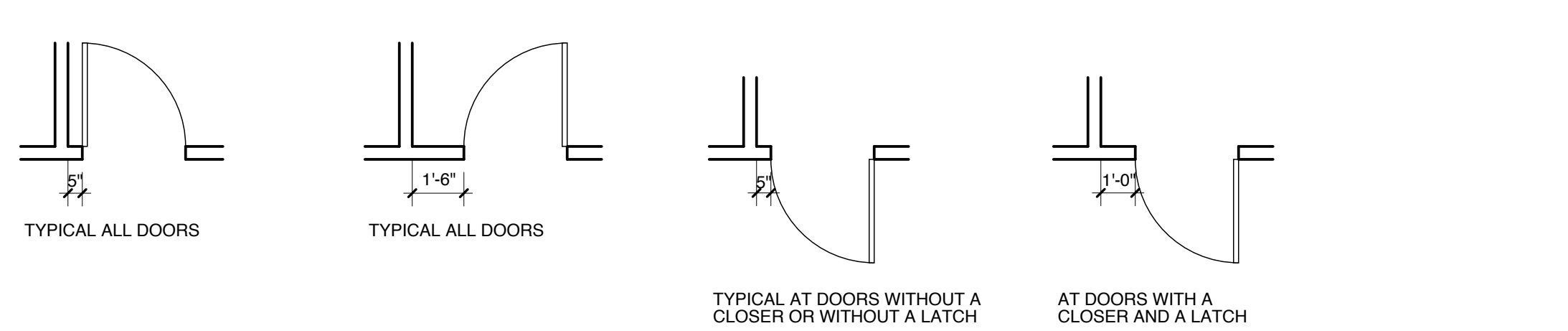
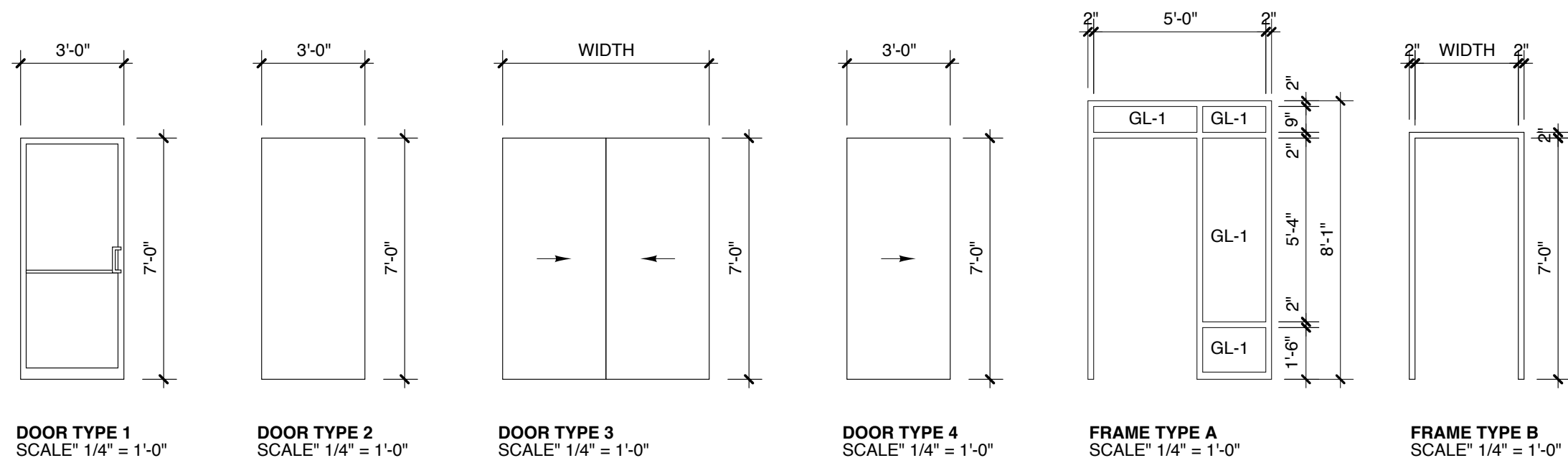
ROOM FINISH SCHEDULE									
NO.	NAME	FLOORS	BASE	WALLS	TRIM	CEILING	MAT.	HEIGHT	NOTES
101	VESTIBULE	MAT	VB	PT	PT	8'-8"	ACT		
102	WAITING	CPT1/CPT2	VB	PT	PT	8'-8"	ACT		
103	RECEPTION	CPT2	VB	PT	PT	8'-8"	ACT		
104	OPTICAL	CPT1/CPT2	VB	PT	PT	8'-8"	ACT		
105	TECH	CPT2	VB	PT	PT	8'-8"	ACT		
106	CONTACT LENS	PLK	VB	PT	PT	8'-8"	ACT		
107	PHOTO	CPT2	VB	PT	PT	8'-8"	ACT		
108	TOILET	PLK	VB	PT	PT	8'-8"	ACT		
109	CLOSET	CPT1	VB	PT	PT	8'-8"	ACT		
110	LAB	VIN	VB	PT	PT	8'-8"	ACT		
111	BREAK	CPT1/PLK	VB	PT	PT	8'-8"	ACT		
112	EXIT	CPT1	VB	PT	PT	8'-8"	ACT		
113	STORAGE	VCT	VB	PT	PT	8'-8"	ACT		
114	OFFICE	CPT1	VB	PT	PT	8'-8"	ACT		
115	CORRIDOR	CPT1	VB	PT	PT	8'-8"	ACT		
116	CLOSET	CPT1	VB	PT	PT	8'-8"	ACT		
117	VISUAL FIELDS	CPT1	VB	PT	PT	8'-8"	ACT		
118	WAITING	CPT2	VB	PT	PT	8'-8"	ACT		
119	PASSAGE	PLK	VB	PT	PT	8'-8"	ACT		
120	CORRIDOR	CPT1	VB	PT	PT	8'-8"	ACT		
121	PRETEST	CPT1	VB	PT	PT	8'-8"	ACT		
122	PRETEST	CPT1	VB	PT	PT	8'-8"	ACT		
123	TOILET	PLK	VB	PT	PT	8'-8"	ACT		
124	CL TRAINING	PLK	VB	PT	PT	8'-8"	ACT		
125	WAITING	PLK	VB	PT	PT	8'-8"	ACT		
126	OFFICE	PLK	VB	PT	PT	8'-8"	ACT		
127	EXAM	PLK	VB	PT	PT	8'-8"	ACT		
128	EXAM	PLK	VB	PT	PT	8'-8"	ACT		
129	EXAM	PLK	VB	PT	PT	8'-8"	ACT		
130	EXAM	PLK	VB	PT	PT	8'-8"	ACT		
131	UTILITY	PLK/EXG	VB	PT/EXG	PT	8'-8"	ACT	1,2	

MATERIAL/FINISH ABBREVIATIONS

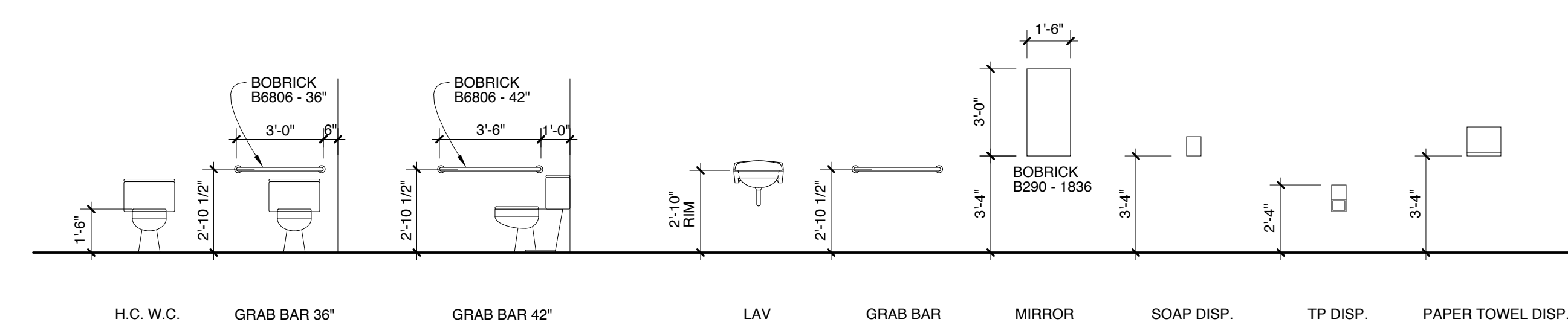
- ACT ACOUSTICAL SUSPENDED CEILING
- CPT1 CARPET TILE 1
- CPT2 CARPET TILE 2
- EXG EXISTING
- MAT WALK-OFF MAT
- PLK VINYL PLANK
- VB VINYL BASE
- VCT VINYL COMPOSITION TILE
- VIN SHEET VINYL

NOTES

1. EXISTING RUBBER TILE FLOOR TO REMAIN IN PORTION OF ROOM WITH SINK AND ELECTRICAL PANELS.
2. EXISTING FRP ON WALLS TO REMAIN IN PORTION OF ROOM WITH SINK AND ELECTRICAL PANELS.

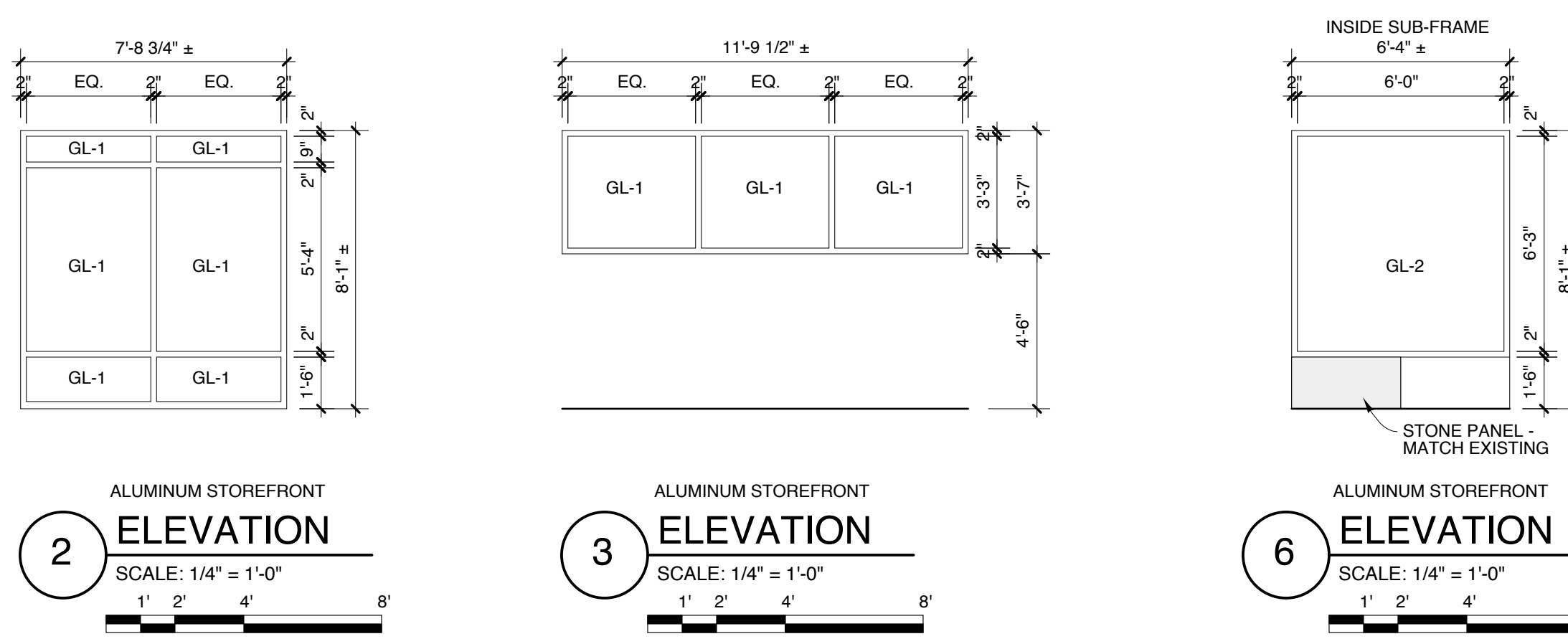


1 TYPICAL DOOR JAMB CLEARANCES
SCALE: 1/4" = 1'-0"



4 BATHROOM FIXTURE MOUNTING HEIGHTS
SCALE: 1/4" = 1'-0"

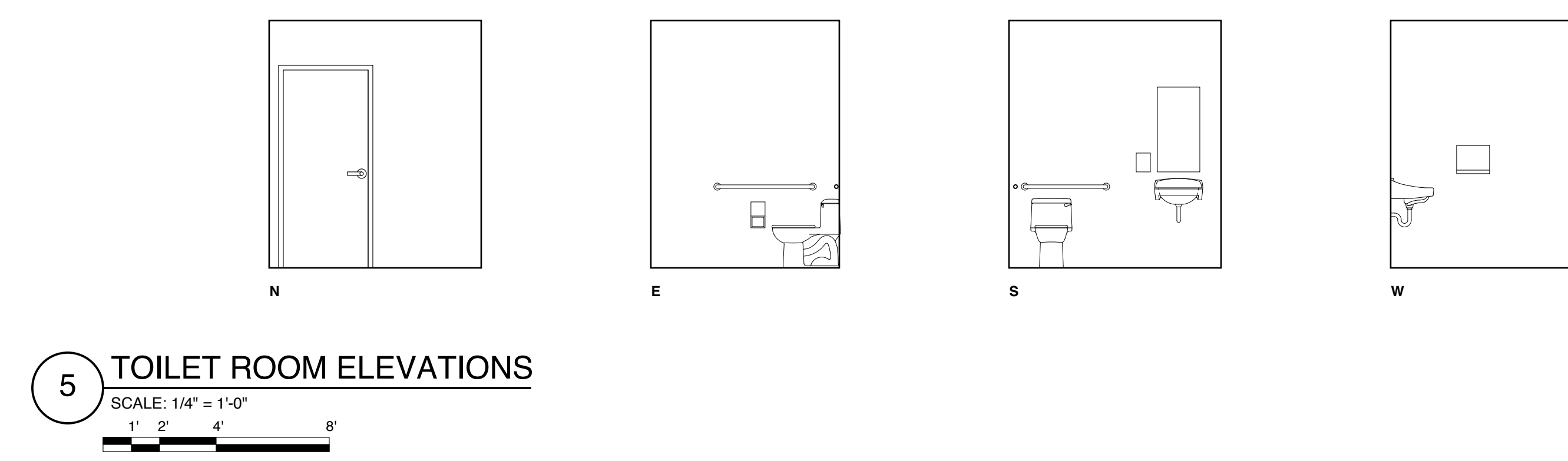
- FIXTURE AND ACCESSORY NOTES:**
1. PROVIDE SOLID WOOD BLOCKING IN WALL FOR MOUNTING OF ALL WALL-MOUNTED ITEMS.
 2. SOAP, PAPER TOWEL, AND TOILET PAPER DISPENSERS FURNISHED BY OWNER, INSTALLED BY G.C.



2 ALUMINUM STOREFRONT ELEVATION
SCALE: 1/4" = 1'-0"

3 ALUMINUM STOREFRONT ELEVATION
SCALE: 1/4" = 1'-0"

6 ALUMINUM STOREFRONT ELEVATION
SCALE: 1/4" = 1'-0"



5 TOILET ROOM ELEVATIONS
SCALE: 1/4" = 1'-0"

Michael Charek Architects
25 Hartley Street
Portland, Maine 04103
(207) 761-0556



Offices for Casco Bay Eyecare
Street Level
2 Portland Square
Portland, ME 04101

Title
SCHEDULES AND DETAILS

Scale: AS NOTED

Date: 9/4/15

Revisions

Sheet

A3