



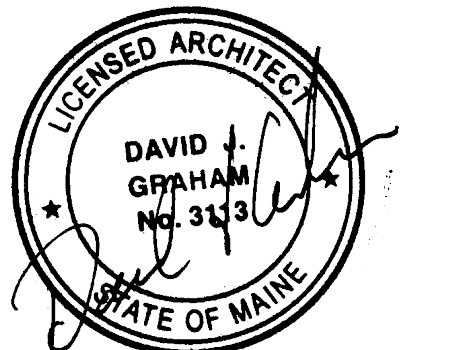
**Graham Architects**

Kennebunkport, Maine  
 T:207.967.8850  
 F:207.967.8851

www.grahamarchitects.com

PROJECT

**2 Portland Square**  
 2 Market Street  
 7th Floor Renovation  
 Portland, Maine 04101



**Issued for Construction**  
**04.07.14**

CLIENT

Raymond James  
 1 Portland Square  
 Portland, ME 04101

CONTRACTOR

STRUCTURAL ENGINEER

INFORMATION

Path: m:\architecture\CBRE\

Issue Date: 04.07.14

Drawn By: DG

Checked By: DG

Revision:

- 1.
- 2.
- 3.
- 4.

TITLE

**NEW POWER AND DATA PLAN**

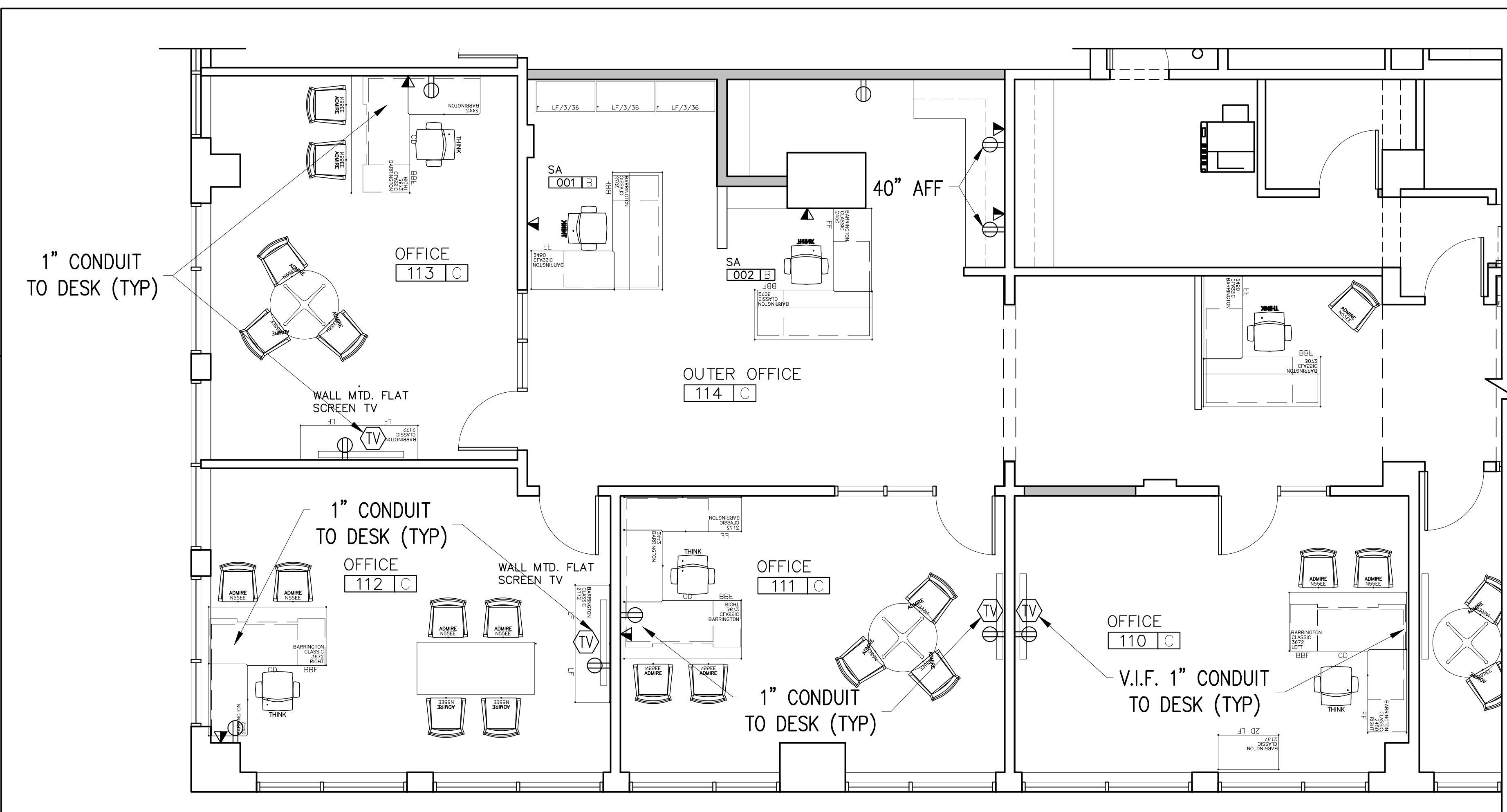
SCALE: 1/4"=1'-0"

©2014 Graham Architects All rights reserved. Information, material, and designs in this document are proprietary to and owned by Graham Architects and may not be disclosed to any third party, reproduced, posted on a global computer information network, or distributed in any way without the written consent from Graham Architects.

POWER/DATA SYMBOLS LEGEND	
	DOUBLE DUPLEX ELECTRICAL RECEPTACLE
	DATA OUTLET
	TV OUTLET WITH VGA CABLING POWER AND CABLE MOUNT 60" AFF. VERIFY IN FIELD.

**NOTE:**

1. THE PROPOSED ELECTRICAL LAYOUT IS INTENDED TO SHOW THE TENANT REQUIRED POWER LOCATIONS. THIS DOES NOT OMIT THE POWER REQUIRED TO MEET THE STANDARDS OF THE ELECTRICAL CODE.
2. ALL DATA RUNS TO RETURN TO SERVER ROOM
3. REPLACE ALL RECEPTACLES AND COVER PLATES, COLOR TO MATCH EXISTING OFFICES.



2 NTS KEY & NOTES

1 1/4"=1'-0" FURNITURE AND FINISH PLAN

**E1.1**