



Graham Architects

Kennebunkport, Maine
T:207.967.8850
F:207.967.8851

www.grahamarchitects.com

PROJECT
2 Portland Square
2 Market Street
7th Floor Renovation
Portland, Maine 04101



Issued for Construction
02.12.13

CLIENT
CBRE
1 Portland Square
Kennebunkport, ME 04046

CONTRACTOR

STRUCTURAL ENGINEER

INFORMATION
Path: m:\architecture\CBRE\
Issue Date: 02.12.13
Drawn By: DG
Checked By: DG
Revision:
1.
2.
3.
4.

TITLE
FINISHES AND FURNITURE PLAN

SCALE: 1/4"=1'-0"

©2013 Graham Architects All rights reserved. Information, material, and designs in this document are proprietary to and owned by Graham Architects and may not be disclosed to any third party, reproduced, posted on a global computer information network, or distributed in any way without the written consent from Graham Architects.

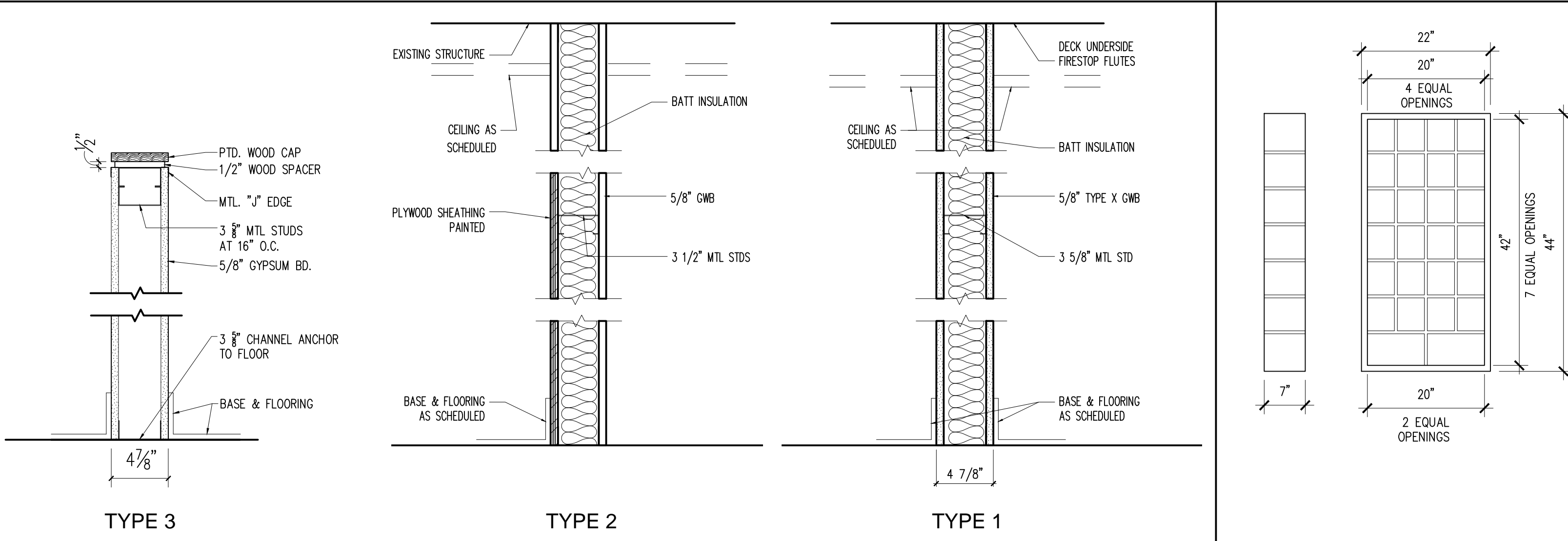
A1.1

DOOR SCHEDULE

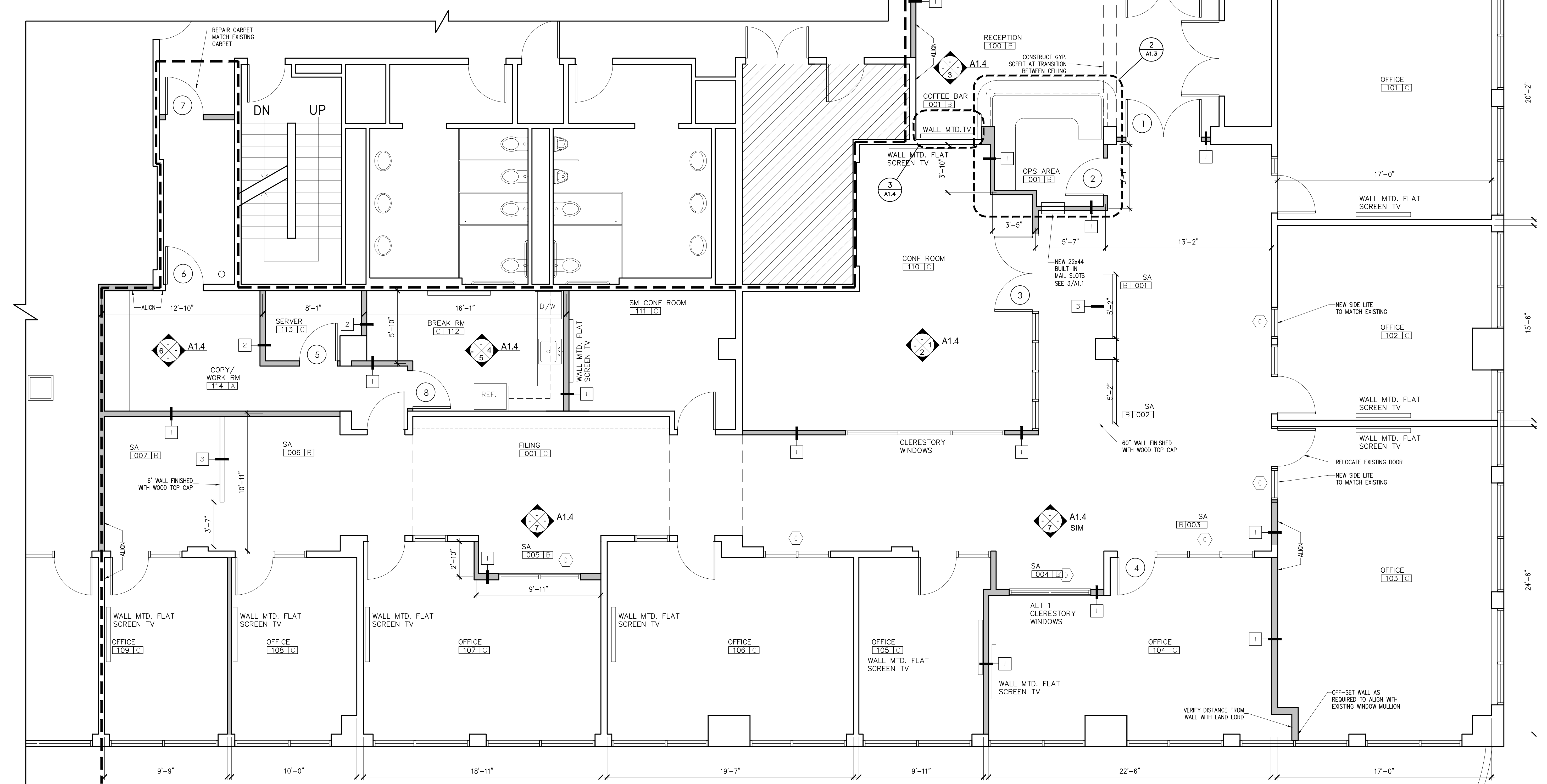
DOOR NUMBER	DOOR			GLAZING	FRAME			HWS	FIRE RATING (MIN)	DOOR NUMBER	REMARKS	
	SIZE	MATERIAL	ELEVATION		MATERIAL	ELEVATION	HEAD					JAMB
01	6'-0" x 7'-0" x 1-3/4"	WD	A	TEMP.	WD	2	-	-	NO SILL	TBD	01	CLOSER
02	3'-0" x 7'-0" x 1-3/4"	WD	B	-	HM	2	-	-	NO SILL	TBD	02	-
03	6'-0" x 7'-0" x 1-3/4"	WD	A	TEMP.	AL	WIN. TYPE A	-	-	NO SILL	TBD	03	-
04	3'-0" x 7'-6" x 1-3/4"	WD	C	-	WD	1	-	-	NO SILL	TBD	04	ALTERNATE ELEV. TYPE D
05	3'-0" x 7'-0" x 1-3/4"	WD	B	-	HM	1	-	-	NO SILL	TBD	05	-
06	3'-0" x 7'-0" x 1-3/4"	WD	B	-	HM	1	-	-	NO SILL	TBD	06	CLOSER
07	3'-0" x 7'-0" x 1-3/4"	EX	EX	-	HM	EX	-	-	EX	TBD	07	CLOSER
08	3'-0" x 7'-0" x 1-3/4"	WD	C	-	HM	-	-	-	EX	TBD	07	DOOR SHOULD BE 7'-0"

NOTE: G.C. TO INCLUDE ADDING A FULL LIGHT GLASS PANEL TO THE EXISTING SOLID WOOD OFFICE DOORS

4 NTS DOOR SCHEDULE



2 NTS WALL TYPES 3 3/4"=1'-0" MAIL BOXES



1 1/4"=1'-0" FLOOR PLAN