

SCOPE OF WORK:

RELOCATE EXISTING SPRINKLER DROPS, USING NEW FIRE SPRINKLER HEADS, TO PROVIDE COMPLIANT FIRE SPRINKLER COVERAGE THROUGHOUT AREA OF RENOVATIONS, AS SHOWN ON THE DRAWING. EXISTING BRANCH LINES AND MAINS TO REMAIN IN PLACE.

SYSTEM CLASSIFICATION:

THE WET PIPE SYSTEM OF AUTOMATIC SPRINKLERS IS DESIGNED IN ACCORDANCE WITH NFPA-13, STANDARD FOR THE INSTALLATION OF SPRINKLER SYSTEMS, 2016 EDITION. LIGHT HAZARD OCCUPANCY FOR OFFICES. ORDINARY HAZARD, GROUP 1 FOR GENERAL STORAGE AREAS, MECHANICAL EQUIPMENT ROOMS, BUILDING SERVICE AREAS AND ELECTRICAL EQUIPMENT ROOMS.

FIXTURE LEGEND:

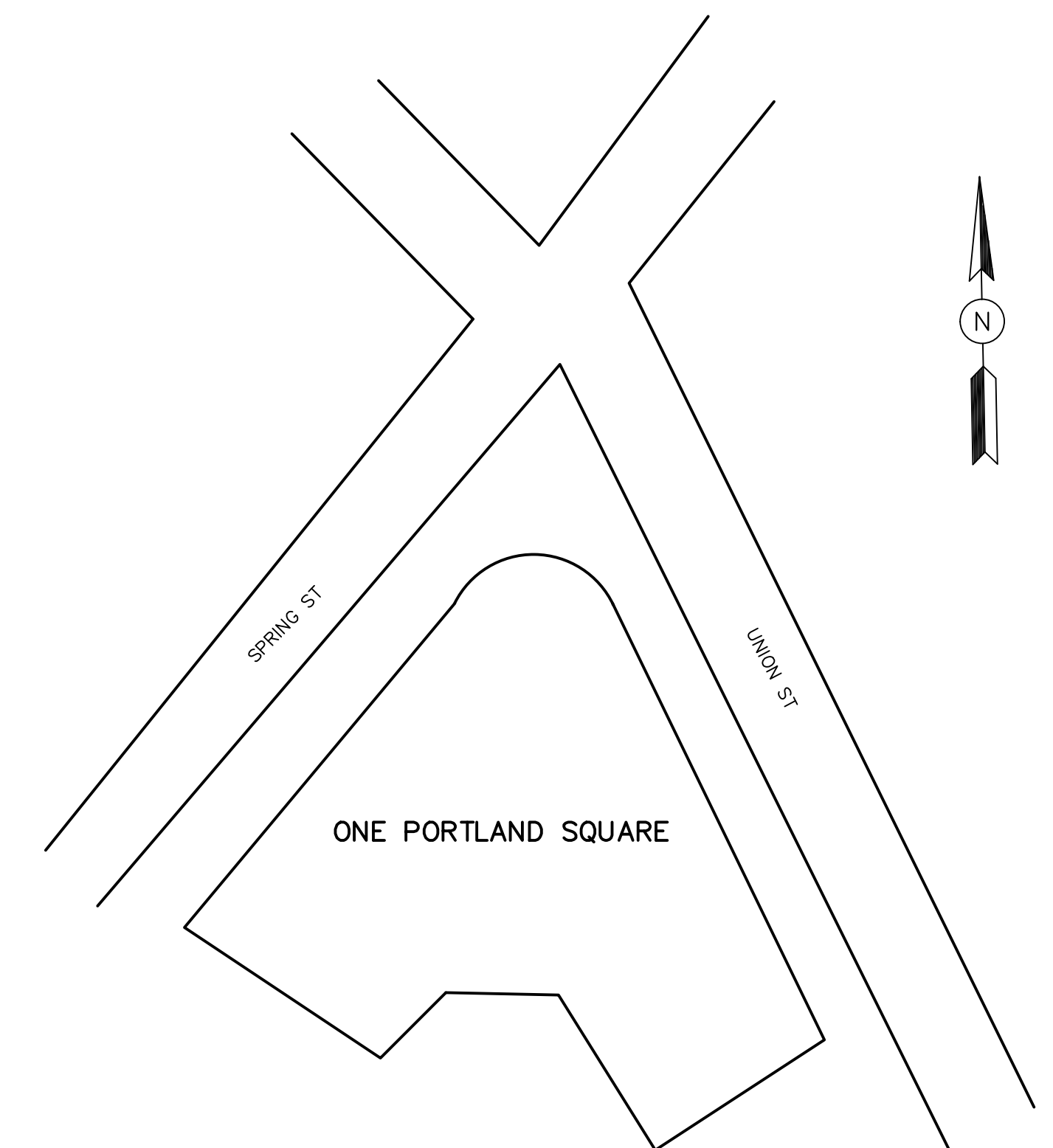
- 24"x24" RECESSED
- SURFACE PENDANT

LEGEND:

- EXISTING BRANCH LINE/MAIN
 - EXISTING 1 INCH OUTLET ON BRANCH LINE
 - UPRIGHT SPRINKLER ON A BRANCH LINE
 - UPRIGHT SPRINKLER ON A 1" SPRIG
 - RECESSED PENDENT SPRINKLER ON A 1" DROP
 - CONCEALED PENDENT SPRINKLER ON A 1" DROP
 - RECESSED EC PENDENT SPRINKLER ON A 1" DROP
 - CONCEALED EC PENDENT SPRINKLER ON A 1" DROP
 - RECESSED EC DRY PENDENT SPRINKLER
 - INSTITUTIONAL PENDENT SPRINKLER ON A 1" DROP
 - RECESSED HORIZONTAL SIDEWALL SPRINKLER
 - HIGH TEMP HORIZONTAL SIDEWALL SPRINKLER
 - SEISMIC BRACE
 - RISE OR DROP
 - GROOVED RIGID COUPLING
 - GROOVED FLEXIBLE COUPLING
 - HYDRAULIC REFERENCE POINT
 - CEILING HEIGHT
 - HANGER
- F Q = X'-X" FINISHED FLOOR TO PIPE CENTERLINE
 TS Q = X'-X" TOP OF STEEL BEAM TO PIPE CENTERLINE
 BB Q = X'-X" BOTTOM OF BEAM TO PIPE CENTERLINE
 C Q = X'-X" CEILING TO PIPE CENTERLINE
 D Q = X'-X" CONCRETE DECK TO PIPE CENTERLINE
 CTE CONNECT TO EXISTING
 FHVC FIRE HOSE VALVE CABINET

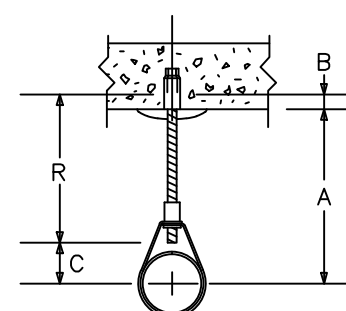
GENERAL NOTES:

ALL 1" TO 2" PIPE IS TO BE SCH. 40 BLACK STEEL U/N.
 ALL 2 1/2" TO 6" PIPE IS TO BE SCH. 10 BLACK STEEL U/N.
 ALL THREADED PIPE FITTINGS ARE TO BE BLACK CAST IRON, CLASS 125 U/N.
 DIMENSIONS SHOWN ON THREADED PIPE ARE CENTER TO CENTER U/N.
 DIMENSIONS SHOWN ON GROOVED PIPE ARE "CUT" LENGTHS U/N.
 PENDENT SPRINKLERS IN ACOUSTIC TILE CEILINGS NEED TO BE CENTERED IN TILES.
 EXISTING LINES AND MAINS TO REMAIN IN PLACE.
 EXISTING WATER SUPPLY IS CITY FED ELECTRIC FIRE PUMP RATED 750 GPM.



LOCATION
N.T.S.

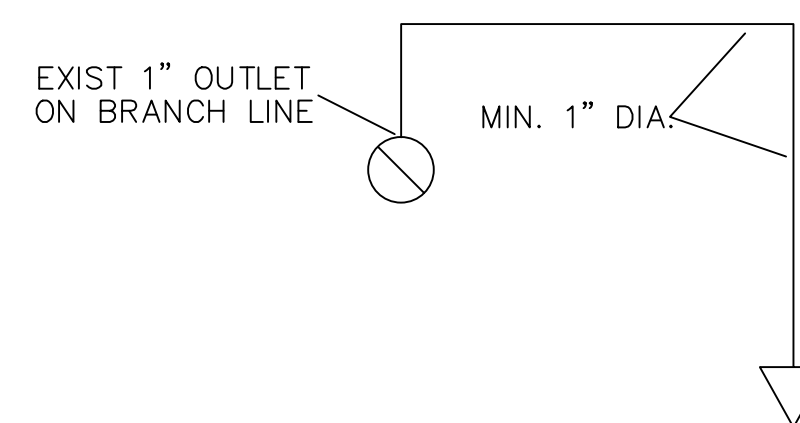
HANGER DETAIL



#12
CONCRETE
HANGER

- 41 RELIABLE MODEL G5-56 CONC. PEND.
155" QUICK RESPONSE, STANDARD COVERAGE
K=5.6, 1/2" NPT, SIN RA3415
WH COVER PLATE 135"

ARM OVER DETAIL



FIRE PROTECTION SUBCONTRACTOR: DEAN & ALLYN, INC.
 STATE OF MAINE CONTRACTOR'S LICENSE NUMBER 262
 EXPIRATION DATE: JUNE 30, 2019

DEAN & ALLYN, INC.
 FIRE PROTECTION • SPECIAL HAZARD
 116 LEWISTON ROAD, GRAY, MAINE 04039
 (207)657-5646 FAX:(207)657-5647

		DANA A. STEWART NICET IV - #064544		DRAWING TITLE: FIRE PROTECTION SYSTEM		REV. 0	
SURVEYED BY: DAN 2/16/18		APPROVED BY:		JOB: CHARTER COMMUNICATIONS 1 PORTLAND SQ, 5TH FL PORTLAND, ME		NO. OF SPRINKLERS SHOWN ON THIS SHEET: 41	
DRAWN BY: DAN 2/16/18		CHECKED BY: X		AT DEAN & ALLYN, INC		NO. OF SPRINKLERS ON JOB: 41	
SCALE 1/4"=1'-0" U/N		SUBMIT FOR APPROVAL: 02/19/18		CONTRACT WITH: DUCAS CONSTRUCTION 3 SOUTHGATE RD #8, SCARBOROUGH ME 04074		CONTRACT NO.: C181490	
SHEET NO. 1 OF 1		REVISIONS:		DATE:		DATE:	