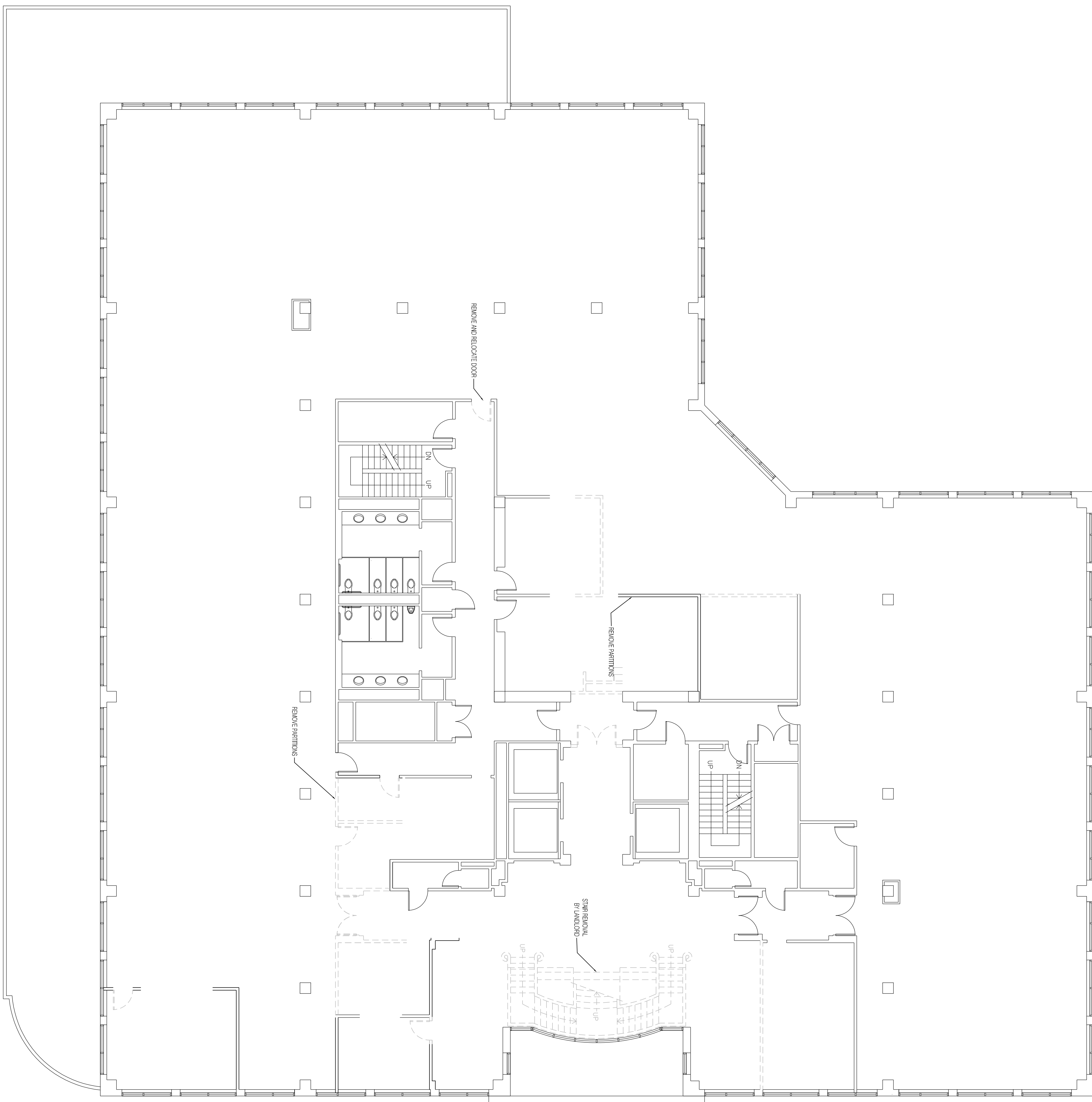


DEMOLITION PLAN  
1/8" = 1'-0"



A-1.2

DESIGNED BY:  
DATE:

REVISION  
SHEET TITLE

DEMOLITION PLAN

2 PORTLAND SQUARE, PORTLAND, ME

STONE COAST  
300 Fore Street, Portland, ME 04101  
MARC KEFFER, STONE COAST FUND SERVICES

