

**GENERAL DEMOLITION NOTES:**

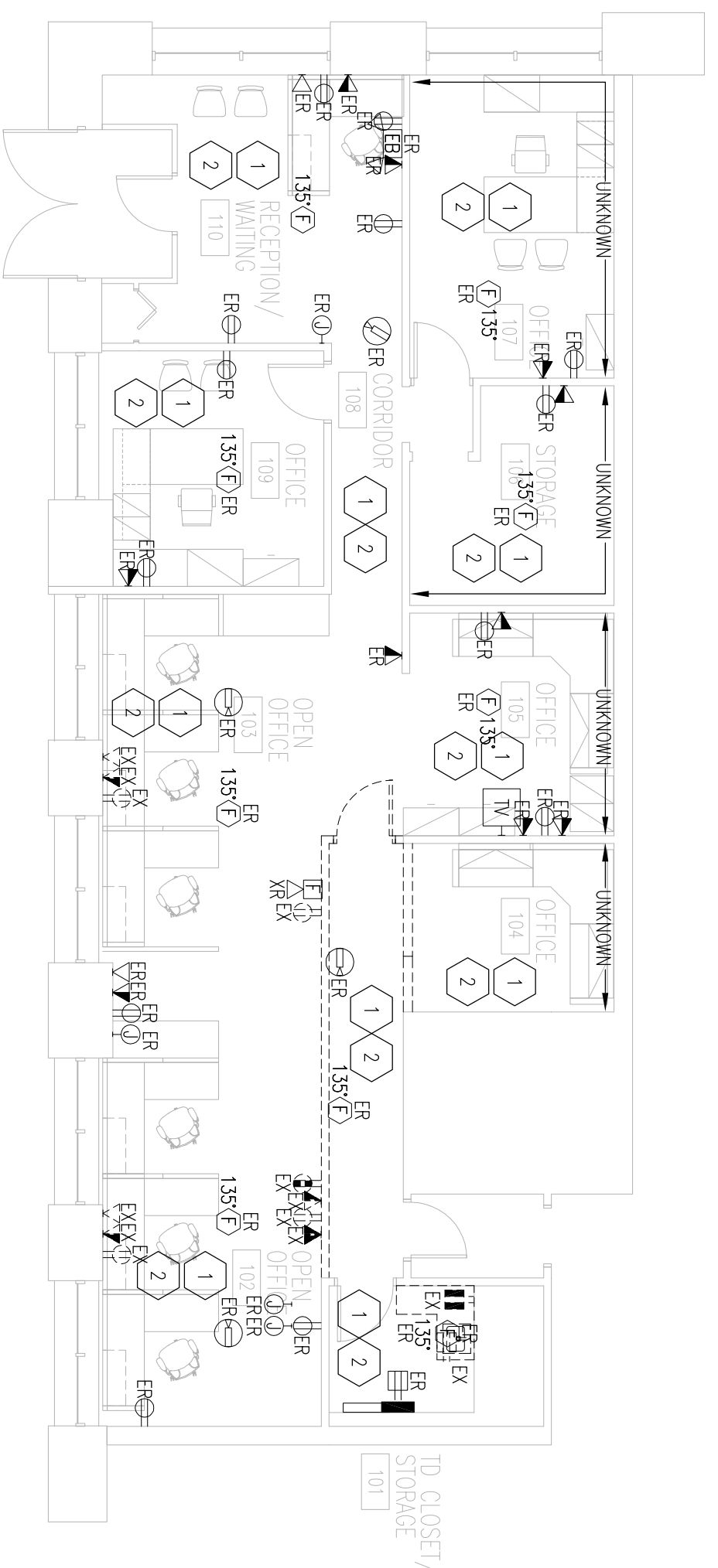
1. REFER TO ARCHITECTURAL DEMOLITION DRAWINGS FOR THE EXTENT OF WALL AND CEILING DEMOLITION.
2. REMOVE DEVICES INDICATED WITH "EX" SUBSCRIPT AND ALL ASSOCIATED CONDUIT, WIRING, AND/OR CABLING BOX TO SOURCE OR TO REMAINING DEVICES, WHERE CONDUIT, WIRING, AND/OR CABLING BOXES ARE NOT TO REMAIN. REMOVE ALL DEVICES, CONDUIT, WIRING, AND/OR CABLING FROM ALL WIRING AND CABBING AND REMOVE CONDUITS AT ALL ACCESSIBLE LOCATIONS OR LOCATIONS MADE ACCESSIBLE THROUGH DEMOLITION. REMOVE EMPTY OUTLET BOX. PROVIDE NEW TYPEDWRITTEN PANELBOARD SCHEDULES TO UPDATE ALL AFFECTED PANELS.
3. DEVICES INDICATED WITH "XRF" SUBSCRIPT SHALL BE RELOCATED, REMOVED FROM EXISTING LOCATION AND REINSTALLED AT NEW LOCATION AS INDICATED ON NEW PANEL. EXISTING CONDUIT, WIRING, AND/OR CABLING SHALL BE DEMOLISHED AND REMOVED FROM EXISTING OR CEILING IS SPECIFICALLY INDICATED. WHERE EXISTING DEVICES ARE LOCATED IN WALLS.
4. DEVICES INDICATED WITH "TER" SUBSCRIPT SHALL REMAIN, MAINTAIN ALL EXISTING CIRCUITING AND CONNECTIONS SO DEVICE REMAINS FULLY OPERATIONAL. CLEAN ALL EXISTING CIRCUITING, WIRING, AND/OR CABLING. REMOVE ALL EXISTING CIRCUITING, WIRING, AND/OR CABLING FROM WALLS AND REINSTATE MATCHING EXISTING LAMPS.

**NOTES:**

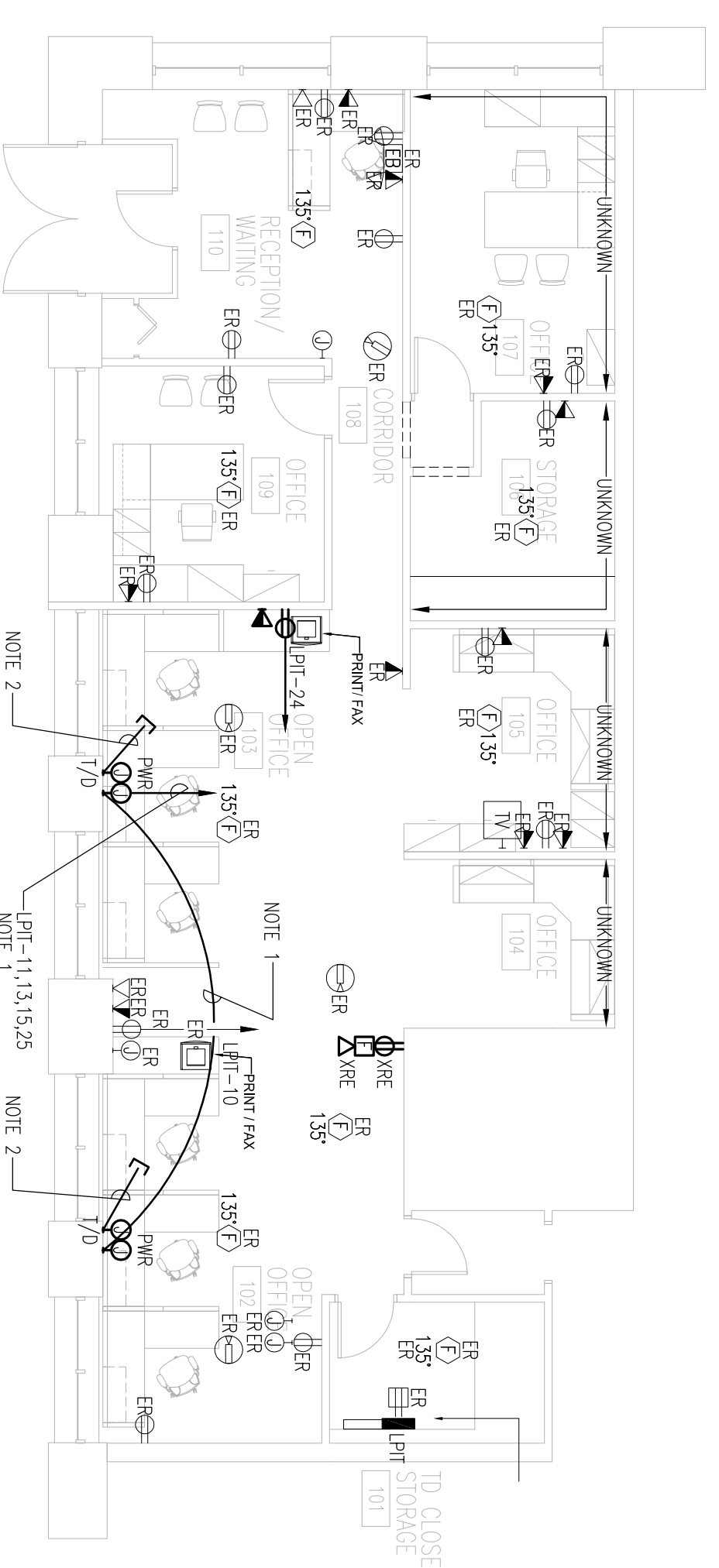
1. 4 CIRCUIT HORIZONTAL FOR POWERED FURNITURE SYSTEM (TYPE BT CIRCLES); HOWEVER, TO CONSIST OF #4/20H, #10N, #12N & 2#12C IN 3/4" C. WIRE TO NEW (4) 20A/7P C/8'S IN PANEL DESIGNATED. PROVIDE FINAL TERMINATION TO POWERED FURNITURE SYSTEM.
2. TEL/DATA WIRING FEED FOR FURNITURE SYSTEM. PROVIDE 4 11/16" BOX WITH 1 1/4" C. TO ACCESSIBLE CEILING SPACE. TERMINATE WITH 30' ELEM AND BUSHING. PLATE TO BE BRUSHED SIMILAR WITH HOLE TO ACCOMMODATE 1 1/4" CONNECTION.

**DEMOLITION KEY NOTES:**

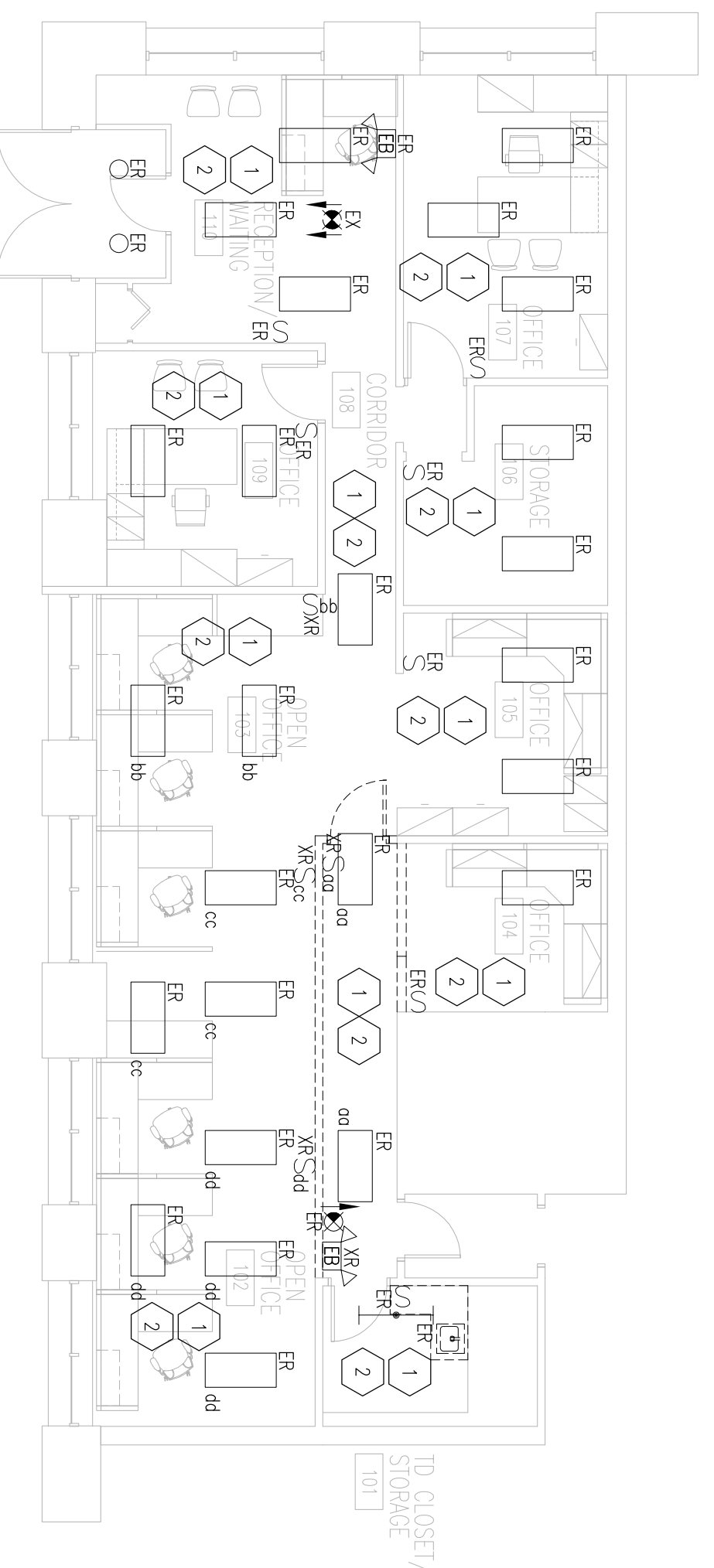
- 1 REFER TO GENERAL DEMOLITIONS NOTES ABOVE.
- 2 UNLESS OTHERWISE NOTED, ALL EXISTING EQUIPMENT (ELECTRICAL, PIPES, HVAC/PLUMBING AND TELEPHONE EQUIPMENT) IN THIS AREA SHALL REMAIN. MAINTAIN CONDUIT, CONTROLS AND ALL ASSOCIATED WIRING.



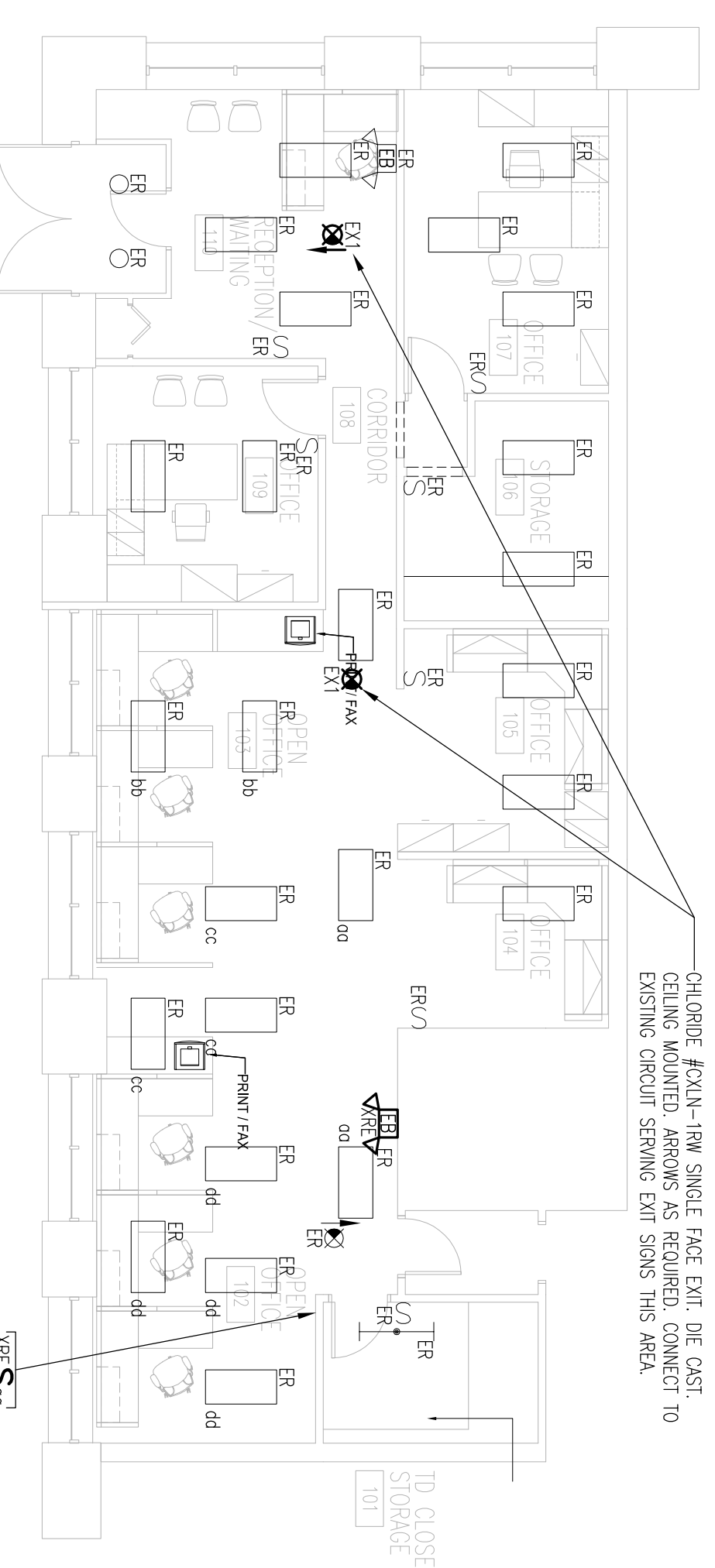
**1 LOWER LEVEL PLAN – DEMOLITION POWER**  
SCALE: 1/8"=1'-0"



**3 LOWER LEVEL PLAN – POWER**  
SCALE: 1/8"=1'-0"



**2 LOWER LEVEL PLAN – DEMOLITION LIGHTING**  
SCALE: 1/8"=1'-0"



**4 LOWER LEVEL PLAN – LIGHTING**  
SCALE: 1/8"=1'-0"