

Gawron Turgeon
ARCHITECTS
29 Black Point Road
Scarborough, Maine 04074
www.gawronturgeon.com
207-883-6307 tel 207-883-0361 fax

PRUDENTIAL
TWO PORTLAND SQUARE FOURTH FLOOR
PORTLAND, MAINE

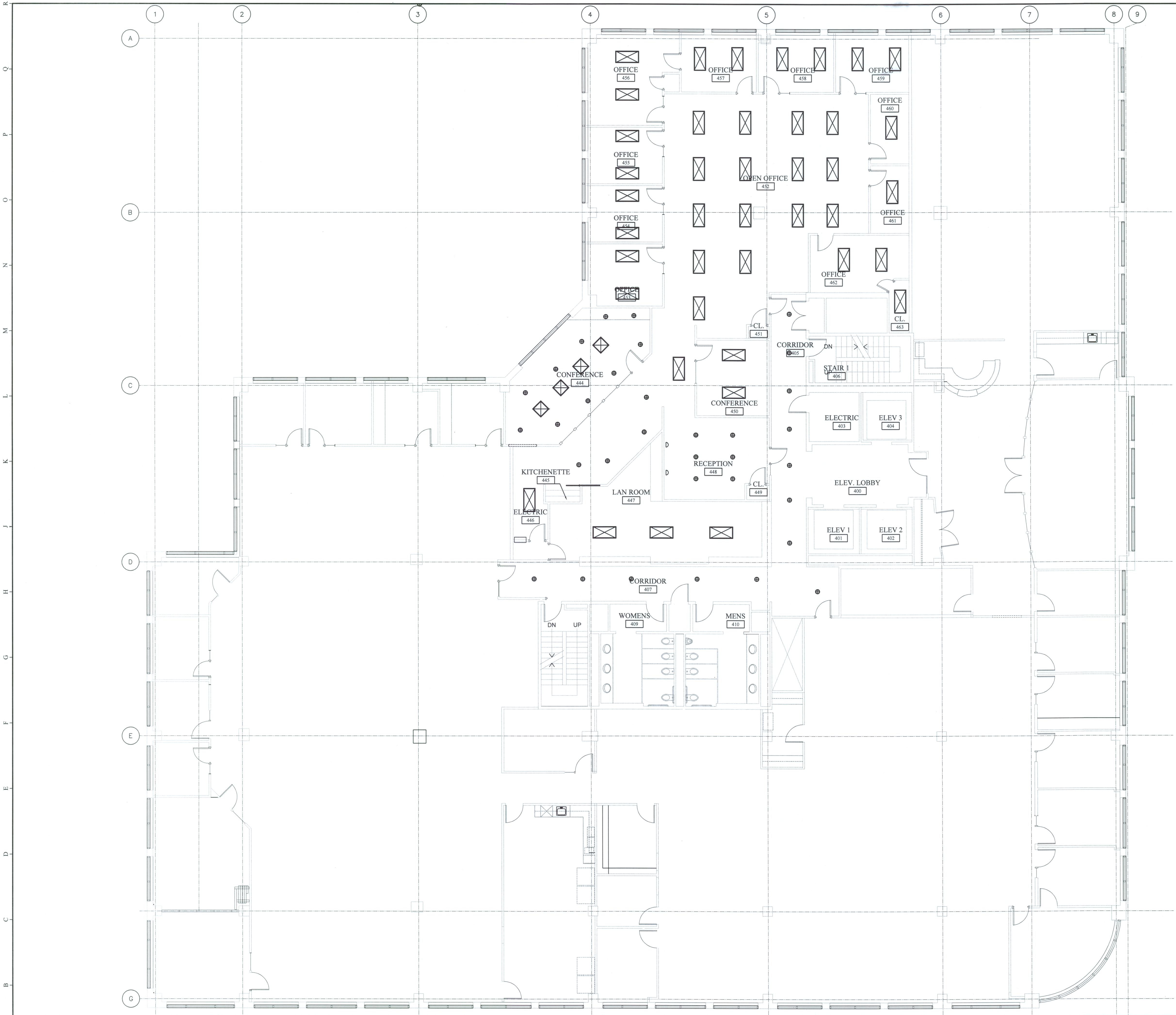
REVISIONS		
#	DATE	DESCRIPTION
1	06/30/09	PROGRESS REVIEW SET
2	07/13/09	ISSUED FOR PERMITTING ONLY

DATE:	07.13.09
PROJECT #	020109
DRAWN BY:	DLP
CHECKED BY:	MET/SWG
DRAWING SCALE	AS NOTED

SHEET TITLE
EXISTING CONDITION
FOURTH FLOOR
REFLECTED CEILING
PLAN

EX300

© COPYRIGHT 1985-2003
REPRODUCTION OR REUSE OF
THIS DOCUMENT WITHOUT
WRITTEN PERMISSION OF
GAWRON ARCHITECTS IS PROHIBITED

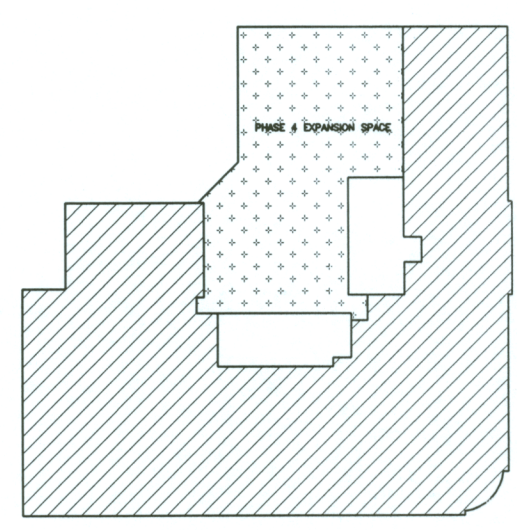


- LIGHTING LEGEND**
- EXISTING 2x4 PARABOLICS TO BE REMOVED AND SALVAGED FOR REUSE. STORE IN A DUST FREE ENVIRONMENT AND RELAMP ALL FIXTURES
 - EXISTING RECESSED DOWNLIGHTS TO BE REMOVED AND SALVAGED FOR REUSE. STORE IN A DUST FREE ENVIRONMENT AND RELAMP ALL FIXTURES
 - EXISTING WALL SCONCES TO BE REMOVED

- NOTES:**
- LIGHTING LAYOUT IS FOR QUANTITY INTENT ONLY. EXACT LOCATION OF FIXTURES MAY VARY.
 - REUSE ALL EXISTING LIFE SAFETY FIXTURES. REMOVE AND RELOCATE AS NECESSARY DUE TO NEW LIFE SAFETY PLAN.
 - G.C. TO VERIFY QUANTITY OF ALL LIGHTING AND LIFE SAFETY FIXTURES TO DETERMINE IF ANY NEW FIXTURES WILL BE NEEDED.

D17 NOTES

- NTS
- PHASE 1 CONSTRUCTION COMPLETED
 - PHASE 2 CONSTRUCTION COMPLETED
 - PHASE 3 CONSTRUCTION COMPLETED
 - PHASE 4
 - SOLID WALLS REPRESENT NEW WALLS IN EXISTING FACILITY
 - EXISTING WALLS AND/OR AREAS TO REMAIN
 - EXISTING WALLS TO BE REMOVED



A1 EXISTING CONDITION FOURTH FLOOR REFLECTED CEILING PLAN

A17 KEY PLAN