

Gawron Turgeon ARCHITECTS
 79 Black Point Road
 Scarborough, Maine 04074
 www.gawronturgeon.com
 207-883-6307 tel / 207-883-0361 fax

PRUDENTIAL
 TWO PORTLAND SQUARE FOURTH FLOOR
 PORTLAND, MAINE

REVISIONS		
#	DATE	DESCRIPTION
1	06/30/09	PROGRESS REVIEW SET
2	07/13/09	ISSUED FOR PERMITTING ONLY

DATE:	07.13.09
PROJECT #	020109
DRAWN BY:	DLP
CHECKED BY:	MET/SWG
DRAWING SCALE	AS NOTED

SHEET TITLE
 FOURTH FLOOR PLAN
 REFLECTED CEILING PLAN

A300

© COPYRIGHT 1985-2003
 REPRODUCTION OR RELEASE OF
 THIS DOCUMENT WITHOUT
 WRITTEN PERMISSION OF
 GAWRON ARCHITECTS IS PROHIBITED

LIGHTING LEGEND

- 2x4 RT5
- NEW 6" INTERIOR RECESSED FLUORESCENT DOWNLIGHT
- NOT USED
- DECORATIVE SEMI-FLUSH PENDANT - KENROY SANCTUARY CONTEMPORARY SEMI-FLUSH MOUNT KR-04591 FROSTED RIB GLASS SHADE AND GRAPHITE FINISH
<http://www.arcadianlighting.com/kr-04591.html>
- EXISTING LIGHT FIXTURE TO BE RE-USED INSTALL NEW ENERGY EFFICIENT LAMPS
- DECORATIVE PENDANT - KENROY SANCTUARY CONTEMPORARY PENDANT LIGHT KR-04592 FROSTED RIB GLASS SHADE AND GRAPHITE FINISH
<http://www.arcadianlighting.com/kr-04592.html>

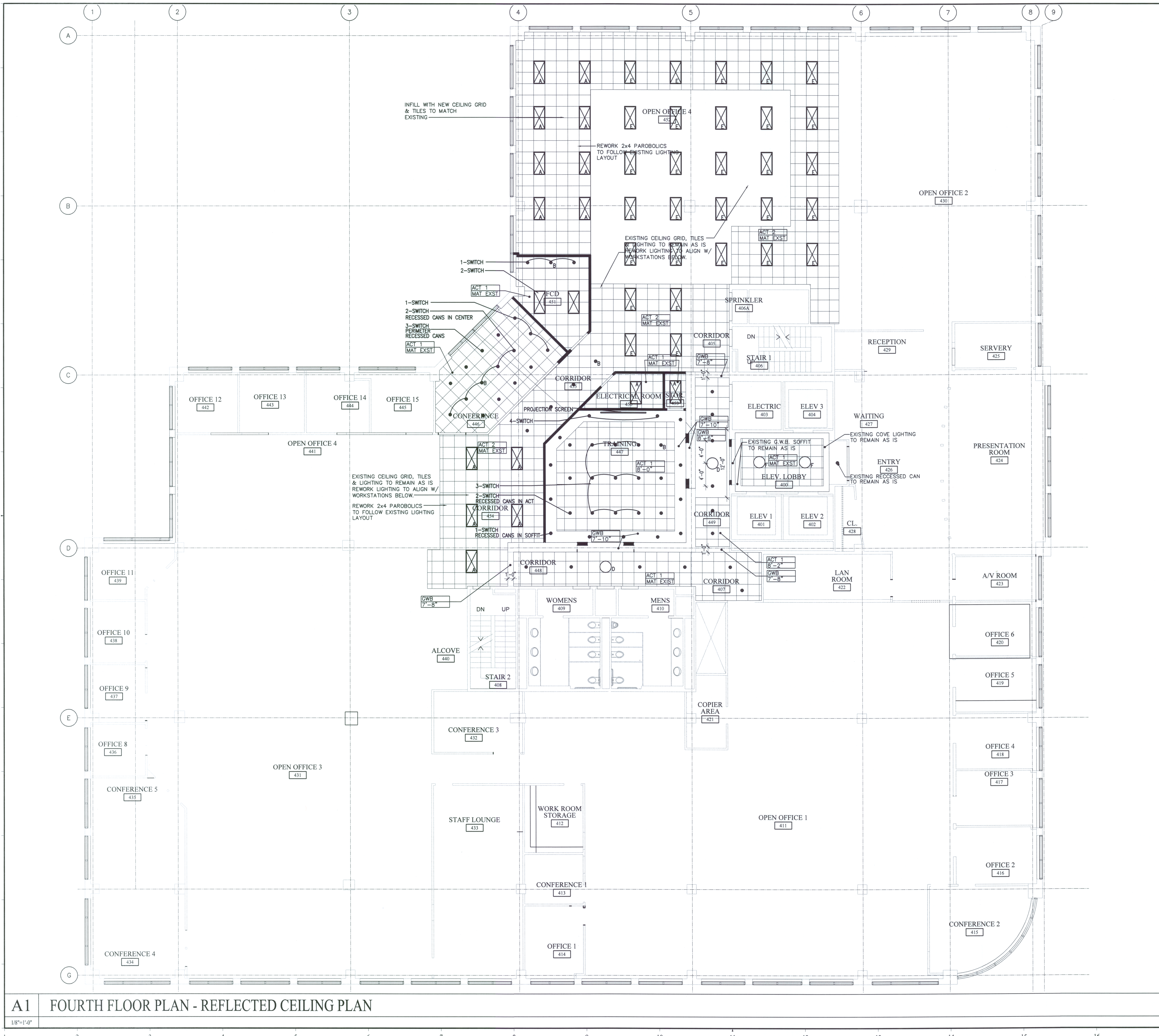
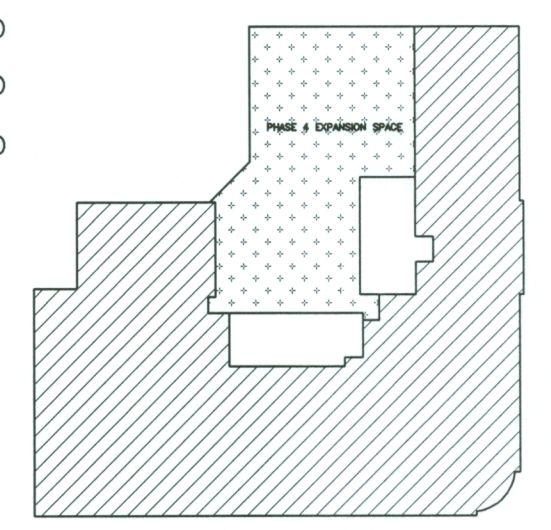
ACT1- ARMSTRONG CEILINGS, DUNE 18" ANGLED REGULAR 24x24x8"
 ACT2- MATCH EXISTING 2x2 ACT CEILING TILE & GRID SYSTEM

NOTES:

1. INTERIOR FIXTURE LEGEND FOR DESIGN INTENT ONLY. REFER TO ELECTRICAL DRAWINGS FOR LIGHT FIXTURE TYPES AND CIRCUITING.
2. MECHANICAL SUBCONTRACTOR TO VERIFY SIZE AND LOCATION OF ANY MECHANICAL REGISTERS WITH ARCHITECT PRIOR TO CONSTRUCTION. LIGHTING LOCATIONS SHALL TAKE PRECEDENCE.
3. SWITCH ALL OFFICES INDEPENDENTLY. DOUBLE SWITCH ALL CONFERENCE ROOMS.
4. INDEPENDENTLY AND DOUBLE SWITCH LAMPS OF 2x4 RT5 FIXTURES.
5. ELECTRICAL CONTRACTOR SHALL COORDINATE OWNER SUPPLIED TELEPHONE & DATA BOXES WITH LOCATIONS OF OUTLETS.
6. G.C. TO COORDINATE ALL SPECIALTY EQUIPMENT WITH TENANTS VENDOR.
7. G.C. TO INVENTORY ALL EXISTING PARABOLICS AND PROVIDE A QUANTITY FOR HOW MANY CAN BE REUSED.
8. PROVIDE A SEPARATE SWITCH & POWER FOR AV PROJECTION.
9. INDEPENDENTLY SWITCH ALL PENDANT LIGHTING
10. ALL EXISTING 2x4 LIGHTS TO BE RE-USED AND RE-LAMPED WITH ENERGY EFFICIENT LAMPS.
11. RECESSED CANS IN CONFERENCE 446 AND TRAINING 447 TO BE ON A DIMMER SWITCH.

D17 FIXTURE LEGEND/NOTES

- PHASE 1 CONSTRUCTION COMPLETED
- PHASE 2 CONSTRUCTION COMPLETED
- PHASE 3 CONSTRUCTION COMPLETED
- PHASE 4



A1 FOURTH FLOOR PLAN - REFLECTED CEILING PLAN

1/8"=1'-0"

A17 KEY PLAN

NTS



PLAN NORTH