

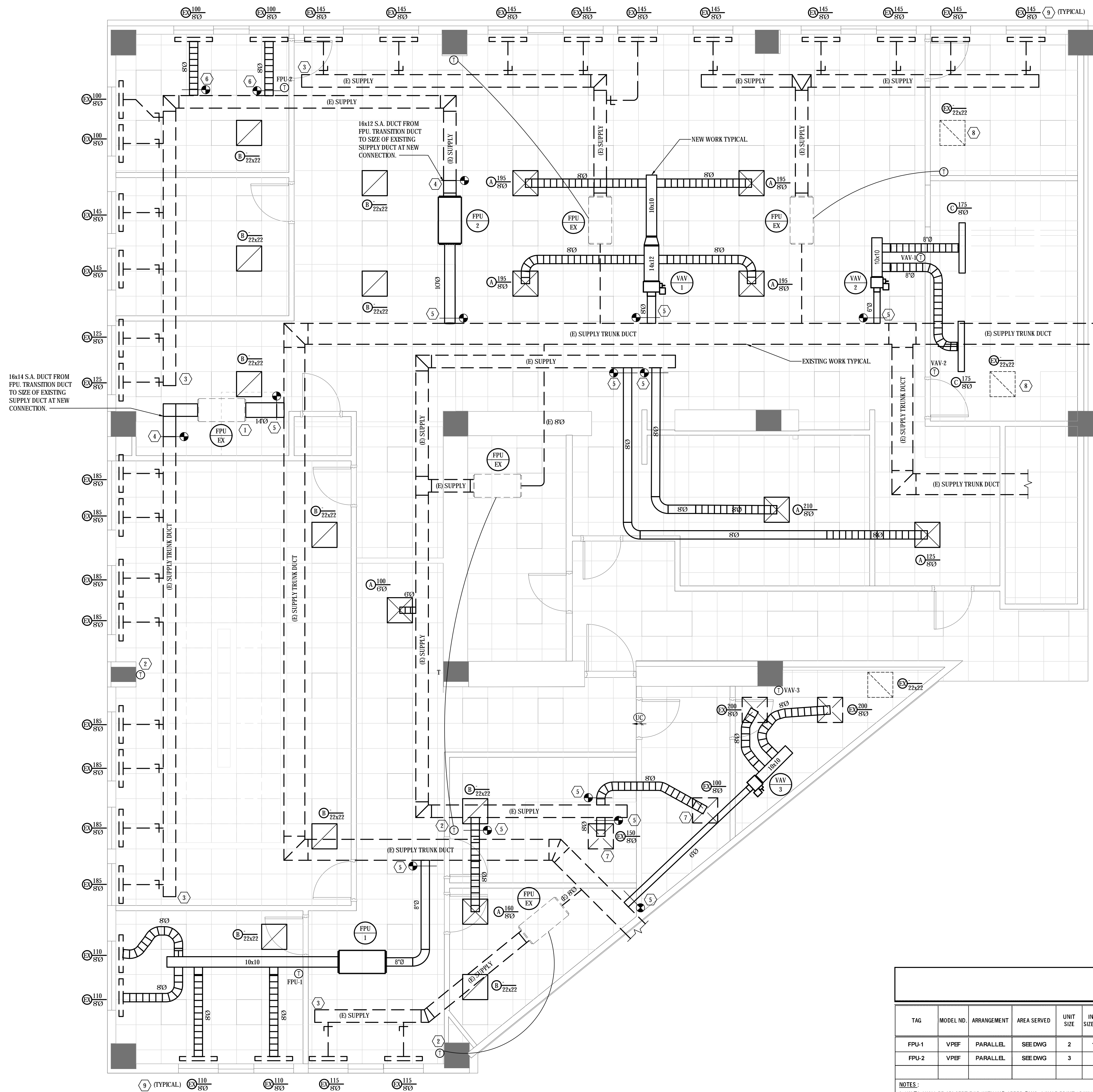
E

D

C

B

A



1 MECHANICAL FLOOR PLAN - NEW WORK
SCALE: 1/4" = 1'-0"

GENERAL NOTES:

- MECHANICAL CONTRACTOR SHALL FIELD VERIFY SIZE AND LOCATION OF ALL EXISTING MECHANICAL EQUIPMENT AND MATERIALS.
- MECHANICAL CONTRACTOR SHALL FIELD VERIFY CONDITION AND QUALITY OF ALL EXISTING MECHANICAL EQUIPMENT AND MATERIALS. IF ANY EXISTING MECHANICAL EQUIPMENT AND/OR MATERIALS ARE DAMAGED AND/OR INOPERABLE, MECHANICAL CONTRACTOR SHALL REPAIR OR REPLACE AS NECESSARY.
- WORK SHOWN ON THIS SHEET IS FOR NEW CONSTRUCTION.
- BALANCE EXISTING FPUS AND VAV TO CFM SHOWN ON DRAWINGS.

KEYED NOTES: NEW WORK

- NEW LOCATION OF EXISTING FPU.
- NEW LOCATION OF EXISTING TSTAT.
- CAP OPEN END OF EXISTING SUPPLY DUCTWORK.
- TRANSITION NEW DUCTWORK TO FULL SIZE OF EXISTING DUCTWORK.
- TAP NEW SUPPLY DUCTWORK INTO EXISTING MEDIUM PRESSURE DUCTWORK.
- CONNECT NEW FLEX DUCT INTO EXISTING MAIN SUPPLY TRUNK.
- NEW LOCATION OF EXISTING SUPPLY DIFFUSER. FIT INTO NEW CEILING GRID.
- NEW LOCATION OF EXISTING RETURN GRILLE. FIT INTO NEW CEILING GRID.
- BALANCE DIFFUSER TO NEW CFM INDICATED ON DWG.

SINGLE DUCT TERMINALS - VAV							
TAG	MODEL No.	INLET (IN)	MAX CFM	MIN CFM	MAX S.P. LOSS (WG)	SERVICE	ACCESSORIES
VAV-1	VCCF	8	780	234	0.05	SEE DRAWINGS	ALL
VAV-2	VCCF	6	380	105	0.05	SEE DRAWINGS	ALL
VAV-3	VCCF	6	400	120	0.05	SEE DRAWINGS	ALL

NOTES (APPLIES TO ALL):

- MAXIMUM NC LEVEL SHALL BE 30 UNLESS NOTED OTHERWISE.
- VAV HOUSING SHALL BE CONSTRUCTED WITH 1/2" THICK FIBERGLASS INSULATION.

ACCESSORIES:

- SAFETY SWITCH, CONTACTORS, AND MANUAL RESET THERMAL CUTOUTS
- PNEUMATIC WITH VOLUME REGULATOR
- EACH VAV SHALL HAVE A WALL MOUNTED SENSOR WITH OVERRIDE CONTROLS
- INTEGRAL DISCONNECT SWITCH
- FACTORY SUPPLIED PNEUMATIC TSTAT

SELECTIONS BASED ON THE PRODUCTS OF: TRANE
EQUAL PRODUCTS BY: ENVIRO-TECH, CARRIER, DAIKIN-MQJQUAY, JOHNSON CONTROLS, TITUS.

FAN POWERED BOXES																
TAG	MODEL NO.	ARRANGEMENT	AREA SERVED	UNIT SIZE	INLET SIZE (IN)	PRIMARY AIR VALVE			FAN			HEATING			NOTES	ACCESSORIES
						AIRFLOW (CFM)		BOX PD (IN WG)	AIRFLW (CFM)	ESP (IN WG)	HP	CAPACITY (KW)	STEPS			
						MAX	MIN									
FPU-1	VPEF	PARALLEL	SEE DWG	2	12	440	132	0.25	220	0.25	1/4	4.5	1	-	ALL	
FPU-2	VPEF	PARALLEL	SEE DWG	3	8	940	282	0.25	470	0.25	1/4	9.0	1	-	ALL	

NOTES:

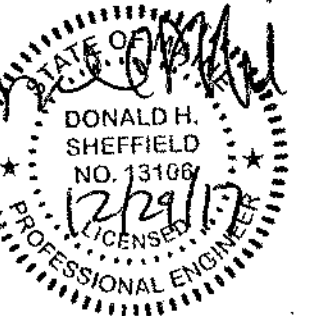
- UNITS SHALL BE AIR CERTIFIED WITH VAR-SPEED FANS, SINGLE POINT POWER CONNECTION, AND INTEGRAL STEP DOWN TRANSFORMER.
- MAXIMUM NC LEVEL SHALL BE 35 AT 2" INLET PRESSURE UNLESS NOTED OTHERWISE.
- HOUSING SHALL BE INSULATED WITH 1" THICK FOIL FACED FIBERGLASS INSULATION.

ACCESSORIES:

- SAFETY SWITCH, CONTACTORS, AND MANUAL RESET THERMAL CUTOUTS
- PNEUMATIC WITH VOLUME REGULATOR
- FAN MOTOR SPEED CONTROL REGULATOR (SCR)
- FILTER
- INTEGRAL DISCONNECT SWITCH
- WALL MOUNTED SENSOR WITH OVERRIDE CONTROLS.
- INDUCTION AIR ATTENUATOR
- FACTORY SUPPLIED PNEUMATIC TSTAT

SELECTIONS BASED ON THE PRODUCTS OF: TRANE
EQUAL PRODUCTS BY: ENVIRO-TECH, NAIDOR, TITUS.

THIS DOCUMENT HAS BEEN PREPARED BY PROGRESSIVE AS AN INSTRUMENT OF SERVICE AND PROGRESSIVE SHALL BE HELD HARMLESS FROM ALL LIABILITY AND OTHER RESERVED RIGHTS, INCLUDING THE COPYRIGHT THEREIN.



If this document is scanned and stored in a digital or electronic format and is received from someone other than the sealing professional identified in the document, you must contact the sealing professional by writing to verify the authenticity of the document. The sealing professional declines the seal and signature and shall not be liable for any liability associated with it when the authenticity of any digital or electronic seal or signature has not been validated in this manner.

ISSUANCES
 ISSUED FOR CONSTRUCTION
 2017-12-28

REVISIONS
 NO. DATE DESCRIPTION