

C1 OUTLET & EQUIPMENT PLAN
SCALE: 1/8" = 1'-0"

OUTLET & EQUIP. PLAN LEGEND

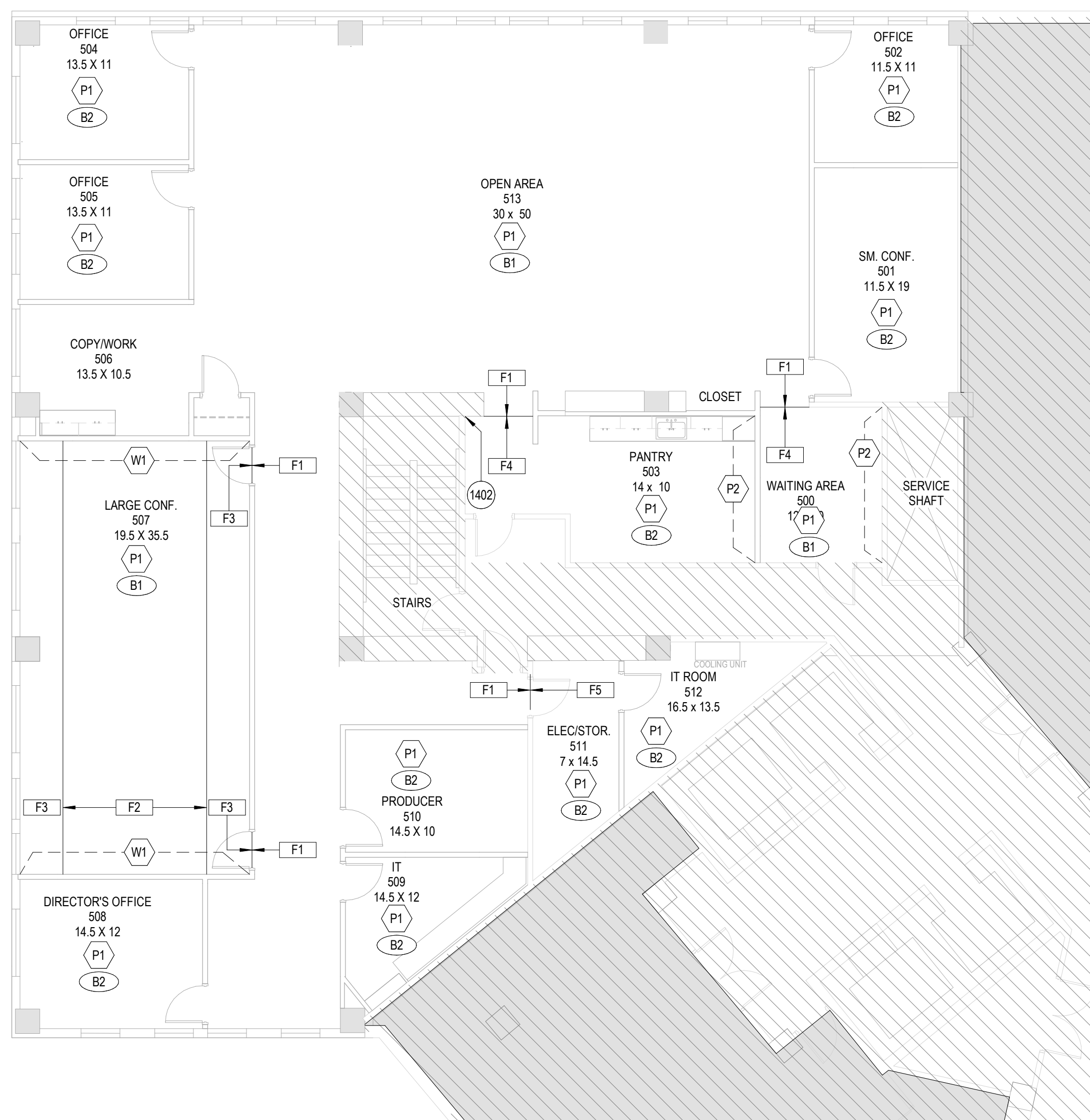
	DUPLEX OUTLET		FLOOR DUPLEX OUTLET
	DEDICATED DUPLEX OUTLET		DEDICATED FLOOR DUPLEX OUTLET
	TELEDATA OUTLET		AUDIO VISUAL SPECIALTY OUTLET
	TELEVISION SPECIALTY OUTLET		
	WALL MOUNTED JUNCTION BOX WITH ELECTRICAL CONNECTION TO SYSTEM FURNITURE (WORKSTATION) SUBSCRIPT INDICATES WORKSTATIONS SERVED. COORDINATE FOR TELECOM ACCESS AND CONNECTION.		
	SECURITY ACCESS DEVICE (SAD AFF)		
	CONDUIT STUB UP AND CONNECTING CONDUIT LINE		

OUTLET LOCATION PLAN NOTES

- G1. REFERENCE LEGEND SHEET G-002 FOR GENERAL NOTES, RESPONSIBILITIES, AND PROCEDURES. EXECUTION OF CONSTRUCTION CONTRACT OR PERFORMING WORK ACCEPTS THE CONDITIONS AND PROVISIONS DOCUMENTED WITHIN SHEET G-002 AND CONSIDERS THE FOLLOWING NOTATION SUPPLEMENTAL TO THOSE CONDITIONS. OUTLET LOCATION PLAN INFORMATION IS LOCATION AND DIMENSIONAL INFORMATION OF ELECTRICAL DEVICES. REFERENCE ENGINEERING DOCUMENTS FOR CIRCUITING AND DEVICE SPECIFICATIONS.
- G2. REFERENCE ELEVATION SHEET FOR STANDARD DEVICE MOUNTING HEIGHTS.
- G3. PROVIDE ELECTRICAL SUPPLY AND TELECOMMUNICATION CONNECTION FOR THE FOLLOWING EQUIPMENT FOR TYPICAL WORKSTATION / PRIVATE OFFICE:
1- PERSONAL COMPUTER AND MONITOR W/ NETWORK CONNECTION (PC CIRCUIT)
1- TASK LIGHT FIXTURES
1- GENERAL PURPOSE DUPLEX OUTLET
ADDITIONAL EQUIPMENT OR REQUIREMENTS SHALL BE NOTED AT THE INSTALLED LOCATION WITHIN SYSTEM WORKSTATION.
- G4. OUTLETS AT BASE CABINERY TO BE MOUNTED HORIZONTALLY AT 44" AFF.
- G5. DIMENSIONS FOR FLOOR MOUNTED ELECTRICAL AND TELECOMMUNICATION DEVICE LOCATIONS ARE FOR REFERENCE. FLOOR PENETRATION LOCATIONS SHALL BE REVIEWED AND APPROVED BY SYSTEM FURNITURE REPRESENTATIVE PRIOR TO CONSTRUCTION.
- G6. FURNITURE BY TENANT / OTHERS.

OUTLET & EQUIP. PLAN KEYNOTES

- ITEMS LABELED WITH KEYED NOTE INDICATOR ARE FOR SPECIFIC LOCATIONS ON PLANS
- 1501. PROVIDE WALL MOUNTED JUNCTION BOX AND POWER SUPPLY FOR QUANTITY OF WORKSTATIONS NOTED. INSTALL WHIP CONNECTOR AND COVERPLATE PROVIDED BY SYSTEM FURNITURE CONSULTANT AND FINAL CONNECTION. VERIFY CIRCUITING OPTIONS, GROUPED CIRCUIT AND SPECIAL EQUIPMENT REQUIREMENTS.
- 1503. PROVIDE DEDICATED CIRCUIT OUTLET MOUNTED TO PLYWOOD TELEPHONE BOARD FOR TENANT SUPPLIED TELECOMMUNICATION EQUIPMENT.
- 1505. PROVIDE OUTLET FOR FULL SIZE REFRIGERATOR WITH ICEMAKER BY TENANT.
- 1508. PROVIDE OUTLET MOUNTED HORIZONTALLY AT 44" AFF. FOR COFFEE/MAKER BY TENANT.
- 1509. PROVIDE (2) DEDICATED CIRCUIT OUTLETS MOUNTED HORIZONTALLY AT 44" AFF AND 48" AFF. FOR MICROWAVE OVEN BY TENANT.
- 1512. DIMENSIONS FOR FLOOR MOUNTED ELECTRICAL AND TELECOMMUNICATION DEVICE LOCATIONS ARE FOR REFERENCE. FLOOR PENETRATION LOCATIONS SHALL BE REVIEWED AND APPROVED BY SYSTEM FURNITURE REPRESENTATIVE PRIOR TO CONSTRUCTION.

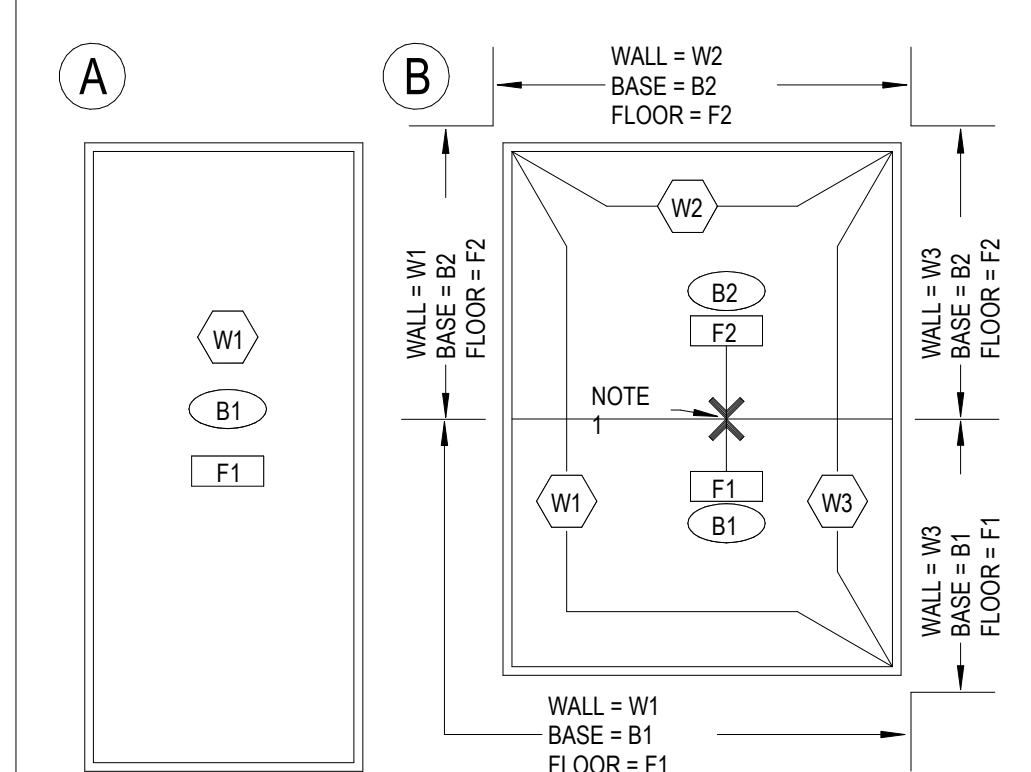


A1 FINISH PLAN
SCALE: 1/8" = 1'-0"

FINISH PLAN LEGEND

	MILLWORK FINISH INDICATOR		BASE FINISH INDICATOR
	FLOOR FINISH INDICATOR		WALL FINISH INDICATOR

FINISH PLAN LABELING EXAMPLES



FINISHES TO BE:
W1- WALL FINISH THRU-OUT ROOM
B1- BASE THRU-OUT ROOM
F1- FLOORING THRU-OUT ROOM

NOTE 1- FLOOR FINISH TRANSITION. PROVIDE COORDINATING TRANSITION STRIP OR REDUCER. SURFACE TO SURFACE HT. TRANSITIONS SHALL NOT EXCEED 1/4" VERTICAL TRANSITION.

FINISH PLAN NOTES

- G1. CONTRACTOR SHALL REFERENCE LEGEND SHEET G-002 FOR GENERAL CONDITIONS, RESPONSIBILITIES, AND PROCEDURES. THE CONTRACTOR IS ADVISED BY PERFORMING WORK FOR THE PROJECT HAS REVIEWED AND ACCEPTED THE CONDITIONS AND PROVISIONS DOCUMENTED WITHIN SHEET G-002 AND SHALL CONSIDER THE FOLLOWING NOTATION SUPPLEMENTAL TO THOSE CONDITIONS.
- G2. REFERENCE ELEVATION DRAWINGS FOR INFORMATION REGARDING MILLWORK FINISH LOCATIONS AND MULTIPLE FINISH DESIGN ELEMENTS.
- G3. PREPARE AND PAINT TELEPHONE EQUIPMENT BOARD TO MATCH ADJACENT WALL FINISH UNO.
- G4. FINISH MATERIALS SHALL COMPLY WITH 2012 NCSBC CHAPTER 9 WALL & CEILING INTERIOR FINISHES AND FLOOR FINISHES SECTION 904 & SECTION 903.3 OF THE IFC.
- G5. FLOOR FINISH TRANSITIONS AT DOOR LOCATIONS SHALL BE CENTERED UNDER DOOR IN CLOSED POSITION.
- G6. FLOOR FINISH TRANSITIONS OCCURRING IN CASED OPENINGS SHALL BE CENTERED ON OPENING DEPTH, UNO.
- G7. PROVIDE TRANSITION STRIPS AT FLOOR FINISH TRANSITIONS. COLOR TO BE COORDINATED WITH ADJACENT FLOOR FINISHES.
- G8. GYP. BOARD SURFACE PREPARATION IN CONCEALED AREAS ABOVE PLENUM TO BE LEVEL 2, UNO.
- G9. FIRE RATED PLENUM SURFACES SHALL BE PREPARED AND LABELED ACCORDING TO BUILDING/FIRE CODE.
- G10. GYP. BOARD SURFACES SHALL BE LEVEL 4 AT EXPOSED CONDITIONS, UNO.
- G11. DOOR FINISH SHALL BE BUILDING STANDARD, UNO.
- G12. DOOR FRAME FINISH SHALL BE W2, UNO.
- G13. FLOOR FINISH SHALL BE F1, UNO.
- G14. BASE SHALL BE B1, UNO.
- G15. WALL FINISH SHALL BE W1, UNO.

FINISH PLAN KEYNOTES

- ITEMS LABELED WITH KEYED NOTE INDICATOR ARE FOR SPECIFIC LOCATIONS ON PLANS
- 1402. CONTINUE WOOD BASE (B1) TO INSIDE CORNER OF WALL.

FLOORING FINISHES

F1	MATERIAL - CARPET TILE MANUFACTURER - INTERFACE NUMBER - HN 520 COLOR - 124980AK00-104232 LIMESTONE APPLICATION - ASHLAR INSTALL - DIRECT GLUE
F2	MATERIAL - CARPET TILE MANUFACTURER - INTERFACE NUMBER - HN 940 COLOR - 127620AK00-104224 LIMESTONE APPLICATION - ASHLAR INSTALL - DIRECT GLUE
F3	MATERIAL - CARPET TILE MANUFACTURER - INTERFACE NUMBER - TBD COLOR - 127600AK00-104208 LIMESTONE APPLICATION - DIRECT GLUE
F4	MATERIAL - LUXURY VINYL TILE MANUFACTURER - INTERFACE PATTERN - LEVEL SET NUMBER - NATURAL WOODGRAINS COLOR - A0210 TEAK
F5	MATERIAL - VINYL COMPOSITION TILE MANUFACTURER - ARMSTRONG PATTERN - STANDARD EXCELON COLOR - 59234 SILK

BASE

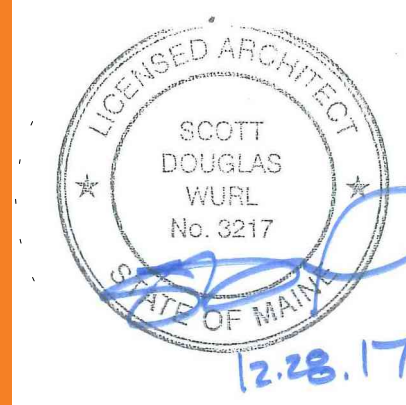
B1	MATERIAL - SALVAGE & REUSE - WOOD BASE APPLICATION - FOR USE WITH WALL FINISH P1
B2	MATERIAL - VINYL COVE BASE MANUFACTURER - JOHNSONITE PATTERN - 4" VINYL COVE COLOR - 48 GREY

WALL FINISHES

P1	MATERIAL - LOW VOC EGGSHELL PAINT MANUFACTURER - SHERWIN WILLIAMS COLOR - SW7028 INCREDIBLE WHITE APPLICATION - 1 COAT PRIMER, 2 COATS PAINT
P2	MATERIAL - LOW VOC EGGSHELL PAINT MANUFACTURER - SHERWIN WILLIAMS COLOR - SW6959 BLUE CHIP APPLICATION - 1 COAT PRIMER, 2 COATS PAINT
W1	MATERIAL - WALL COVERING MANUFACTURER - FILZFELT PATTERN - 3MM WOOL FELT COLOR - 686 ENDZON
PL1	MATERIAL - PLASTIC LAMINATE MANUFACTURER - FORMICA PATTERN - WHITE TWILL NUMBER - 9285-58
PL2	MATERIAL - PLASTIC LAMINATE MANUFACTURER - FORMICA PATTERN - ELEMENTAL BLUE STEEL NUMBER - 6475-58
SS1	MATERIAL - SOLID SURFACE QUARTZ MANUFACTURER - TBD PATTERN - TBD

MILLWORK FINISHES

PL1	MATERIAL - PLASTIC LAMINATE MANUFACTURER - FORMICA PATTERN - WHITE TWILL NUMBER - 9285-58
PL2	MATERIAL - PLASTIC LAMINATE MANUFACTURER - FORMICA PATTERN - ELEMENTAL BLUE STEEL NUMBER - 6475-58
SS1	MATERIAL - SOLID SURFACE QUARTZ MANUFACTURER - TBD PATTERN - TBD



If this document is sealed and signed in a digital or electronic format and is received from someone other than the sealing professional identified in the document, you must contact the sealing professional in writing to validate authenticity of the document. The sealing professional disclaims the seal and signature and shall not be held for any liability associated with it where the authenticity of any digital or electronic seal or signature has not been validated in this manner.

ISSUANCE
12/28/2017
ISSUED FOR CONSTRUCTION

REVISIONS
NO. DATE DESCRIPTION

FILE NUMBER 83660003
PROJECT MANAGER
PROFESSIONAL
DRAWN BY Author
CHECKED BY Checker