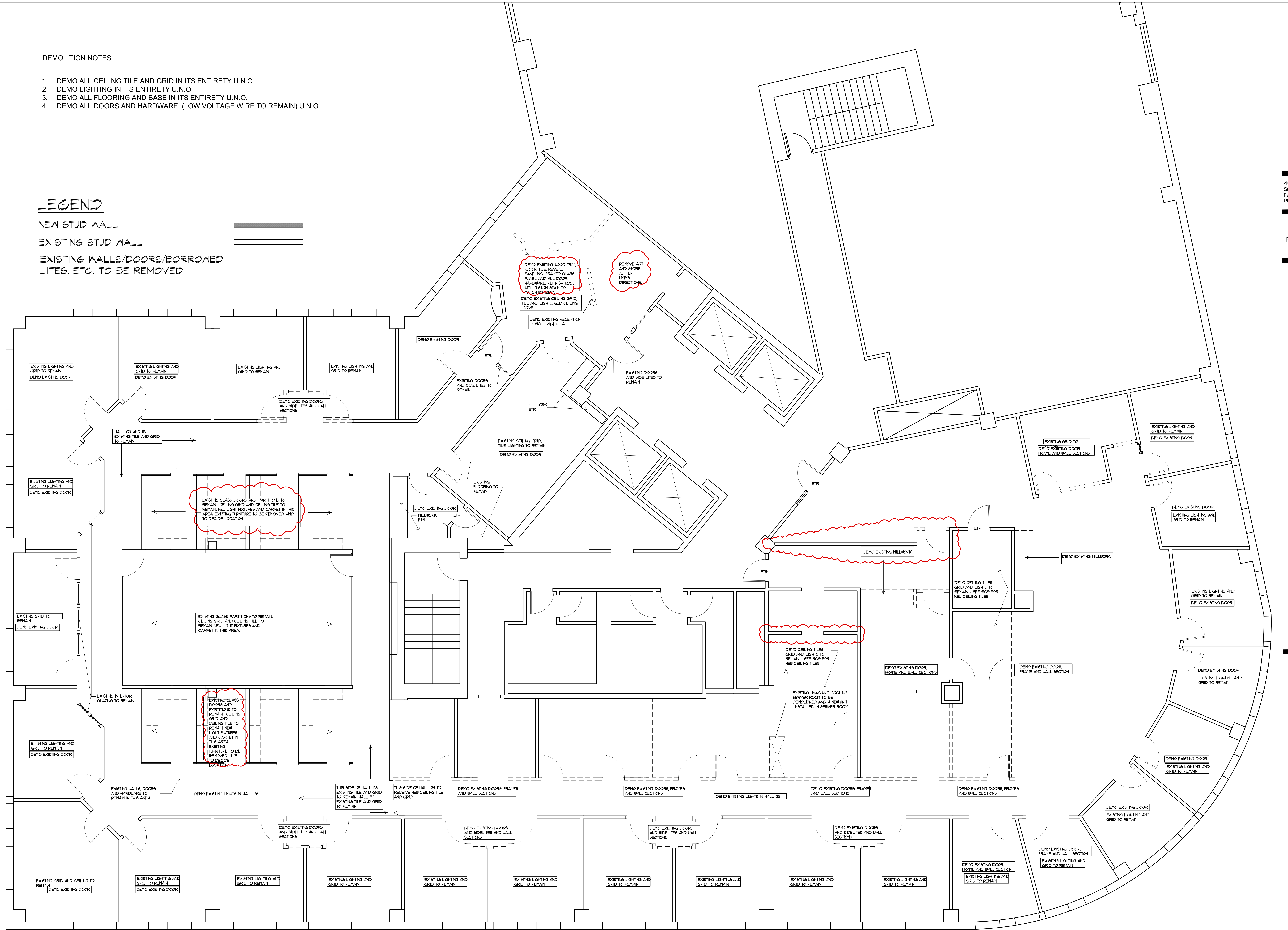


DEMOLITION NOTES

1. DEMO ALL CEILING TILE AND GRID IN ITS ENTIRETY U.N.O.
2. DEMO LIGHTING IN ITS ENTIRETY U.N.O.
3. DEMO ALL FLOORING AND BASE IN ITS ENTIRETY U.N.O.
4. DEMO ALL DOORS AND HARDWARE, (LOW VOLTAGE WIRE TO REMAIN) U.N.O.

LEGEND

- NEW STUD WALL
- EXISTING STUD WALL
- EXISTING WALLS/DOORS/BORROWED LITES, ETC. TO BE REMOVED



DEMO FLOOR PLAN
SCALE: 1/4" = 1'-0"

REVISED: OCTOBER 02, 2017
PERMIT SET: JULY 14, 2017