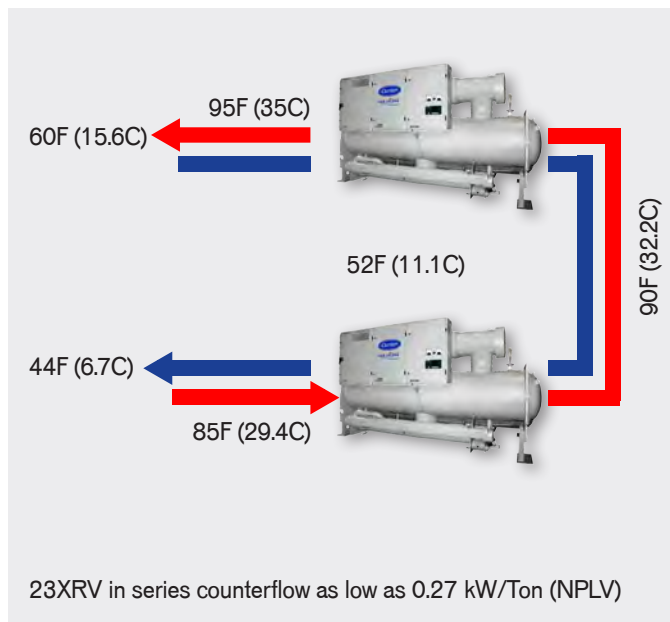


Maximize Efficiency with Series Counterflow (SCF)

- Up to 25 percent better full load efficiency than ASHRAE 90.1 2015 standards*
- Up to 47 percent better part load efficiency than ASHRAE 90.1 2015 standards*
- Up to 6 dbA quieter than parallel chillers
- Identical surge free screw chillers provide ease of operation and flexibility
- Constant or variable flow, N or N + 1 arrangements
- Simple AdvanTE³C plant controls optimize pumps, towers and chillers



*(2) 250 ton (879 kW) variable speed 23XRV chillers in series counterflow arrangement.

Carrier® AquaEdge™ 23XRV Chiller with Greenspeed® Intelligence

High Efficiency Variable Speed Screw Chiller
175 to 550 Nominal Tons (879 to 1,934 kW)



Benefits at a Glance

For Building Owners and Managers

- Reduces operating expenses
- Easy to maintain
- Quiet operation
- Reliable operation
- Environmentally responsible refrigerant

For Consulting Engineers

- Exceeds ASHRAE 90.1
- HFC refrigerant
- High-efficiency optimization
- Ideal for replacement projects

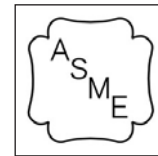
For Contractors

- Easy to disassemble
- Diagnostic controls
- Reliable performance
- Reduces installation expenses

Peace of Mind

Carrier's 19/23 series AquaEdge chillers are provided with a 0.1 percent leak-proof warranty.* Carrier provides coverage against refrigerant leaks for the first five years of ownership. For customers who have a service agreement with Carrier Commercial Service, Carrier will extend the warranty for the life of the chiller.

* For U.S. and Canada only. Warranty is not available in all markets.

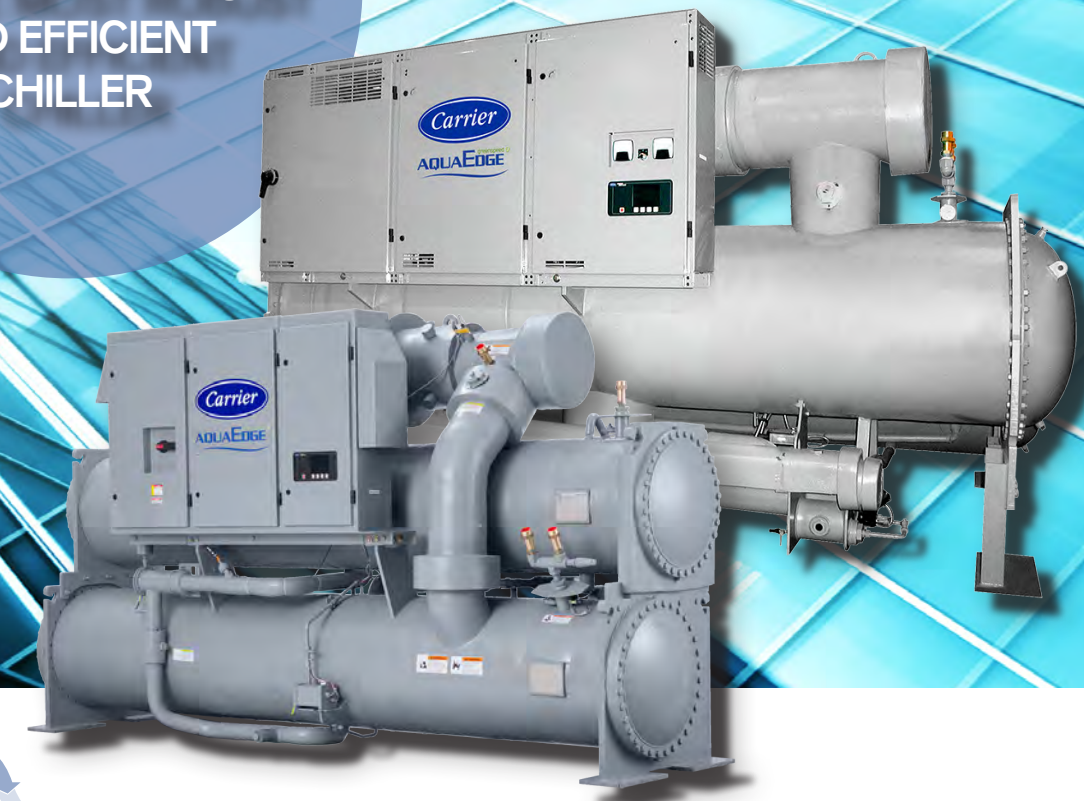


Water cooled chillers within the scope of the AHRI WCCL certification program are certified in accordance with the AHRI Water-Cooled Water-Chilling and Heat Pump Water-Heating Packages Certification Program, which is based on AHRI Standard 550/590 (I-P) and AHRI Standard 551/591 (SI). Certified units may be found in the AHRI Directory at www.ahridirectory.org.

SEISMICOMPLIANT™

*Meets IBC 2006, ASCE-7-05, CBC 2007 and OSHPD seismic requirements.

THE ULTIMATE
IN SIMPLICITY LEADS
TO THE MOST ROBUST
AND EFFICIENT
CHILLER



1-800-CARRIER www.commercial.carrier.com

© Carrier Corporation 2017 Cat. no. 04-811-50051
Manufacturer reserves the right to discontinue, or change at any time, specifications or designs, without notice and without incurring obligations.

You will not find a better chiller...period!

Carrier® AquaEdge™ 23XRV Chiller with Greenspeed® Intelligence

Unparalleled Efficiency: First Chiller to Break the 0.300 IPLV Barrier

GIVEN THE CHOICE, AREN'T FEWER PARTS BETTER?

START YOUR PATH TO HVAC SATISFACTION HERE

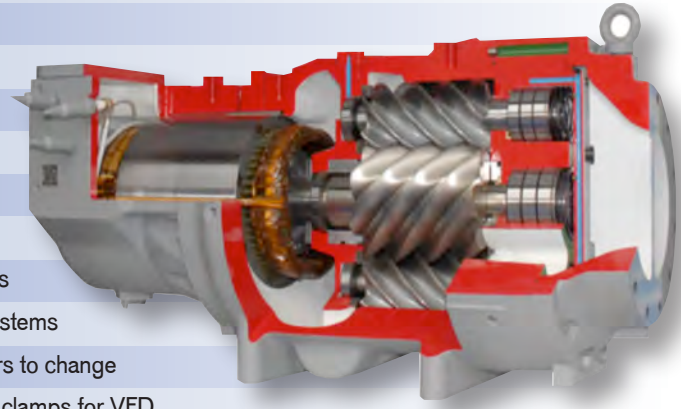
Three Moving Parts

The robust dependable performance of 23XRV chillers stems from Carrier's advanced compression technology. Brilliant in its simplicity, the only moving parts are the screw rotors and variable-speed electric motor.

SIMPLE COMPRESSION

Simple Elegant Design

- No surge
- No purge
- No shaft seals
- No guide vanes
- No slide valves
- No chlorine
- No phase-out
- No refrigerant pumps
- No pressurization systems
- No bearing capacitors to change
- No pumps, hoses or clamps for VFD
- No glycol cooling required for VFD
- No motor heat rejection to the mechanical room



"R" compressor shown

ROBUST

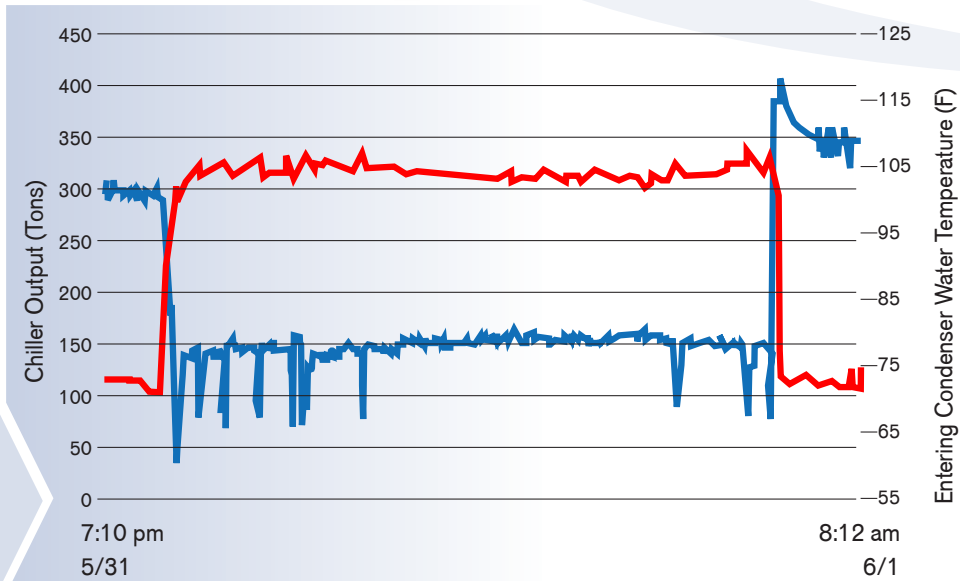
DO YOU WANT COMPLEX... OR SOMETHING THAT ACTUALLY WORKS?

23XRV compressor bearings have a minimum life of >50 years without scheduled maintenance.

IS YOUR CHILLER THIS EXTREME?

- Running without cooling tower fans
- Running with condenser water >105 degrees
- Running with stuck bypass valve
- Running with undersized condenser pumps
- Just running...when you need it most

Data recorders in Arkansas capture the extreme conditions a 23XRV can be subjected to and just keep on running. The tower fan failed at this industrial site and the 23XRV continued to operate with entering condenser water at or above 105 degrees F until the fan was repaired. Can your chiller do this?



IS YOUR CHILLER THIS FLEXIBLE?

Maximum Tons per Amp

For an MCA of 400 the maximum capacities are as follows:

<p>23XRV 437 Tons (1,536.9 kW)</p>	<p>VFD Centrifugal 405 Tons (1,424.3 kW) 7% Difference</p>	<p>Constant Speed Centrifugal 292 Tons (1,026.9 kW) 33% Difference</p>
---	--	--

- Higher power factor results in lower Minimum Circuit Ampacity (MCA)
- Can reduce wire size.
- Can reduce breaker size.

23XRV can help increase capacity of old chiller plants using existing wires.

* - AHRJ Operating Conditions: 44F LCWT/2.40 gpm/Ton (6.67C LCWT/0.4305 L/(s-kW)) 85F ECdWT/3.00 gpm/Ton (29.44C ECdWT/0.5382 L/(s-kW))

Maximum Tons per Amp

The 23XRV chiller can give you more tons per amp than a constant speed centrifugal chiller or even a variable speed drive centrifugal chiller!

FLEXIBLE

Transients

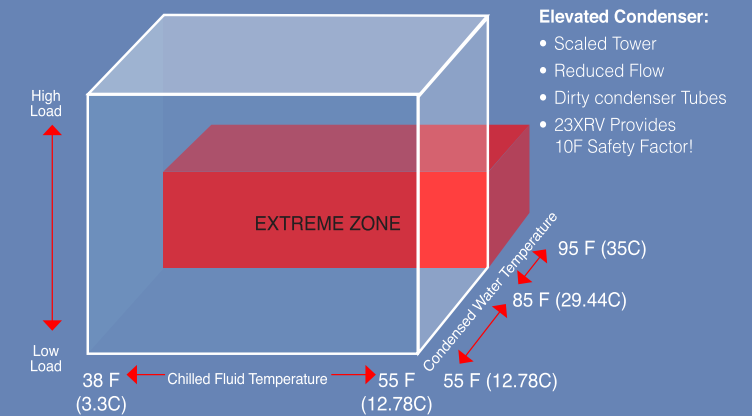
The 23XRV has the capability to react to changes in the system at a rate of 70 percent per minute. This allows more flexibility within the chiller system and can also result in a smaller loop volume requirement.

Lowest Life Cycle Chiller

Because of its simple, speed-optimizing operation, 23XRV chillers deliver balanced efficiency across a wide range of conditions, which can help earn LEED credits in the energy and atmosphere category. 23XRV efficiency at 75 percent load is up to 17 percent more efficient than other variable speed chillers.

NO CHILLER CAN MATCH THE 23XRV'S PERFORMANCE AND EFFICIENCY <0.30 kW/Ton

Operating Range



- Elevated Condenser:**
- Scaled Tower
 - Reduced Flow
 - Dirty condenser Tubes
 - 23XRV Provides 10F Safety Factor!

Wide Operating Range

So flexible the same identical 23XRV chiller can be utilized in Seattle, WA and Guatemala.

UNMATCHED PERFORMANCE

Speed Turndown

The 23XRV can achieve 75 percent speed reduction versus just 35 percent for centrifugal compressors. The more speed reduction means more energy savings.

