

1. WIRE AND CONNECT ALL NEW 120/208V DEVICES AND EQUIPMENT ON THIS FLOOR TO PANEL PL-9B.
2. WIRE AND CONNECT ALL 277/480V EQUIPMENT ON THIS FLOOR TO PANEL PH-9-1 OR PH-9-2.

1	2016-10-10	ADDENDUM #1
Mark	Date	Description

Project Status

ISSUED FOR
CONSTRUCTION

SEPTEMBER 21, 2016

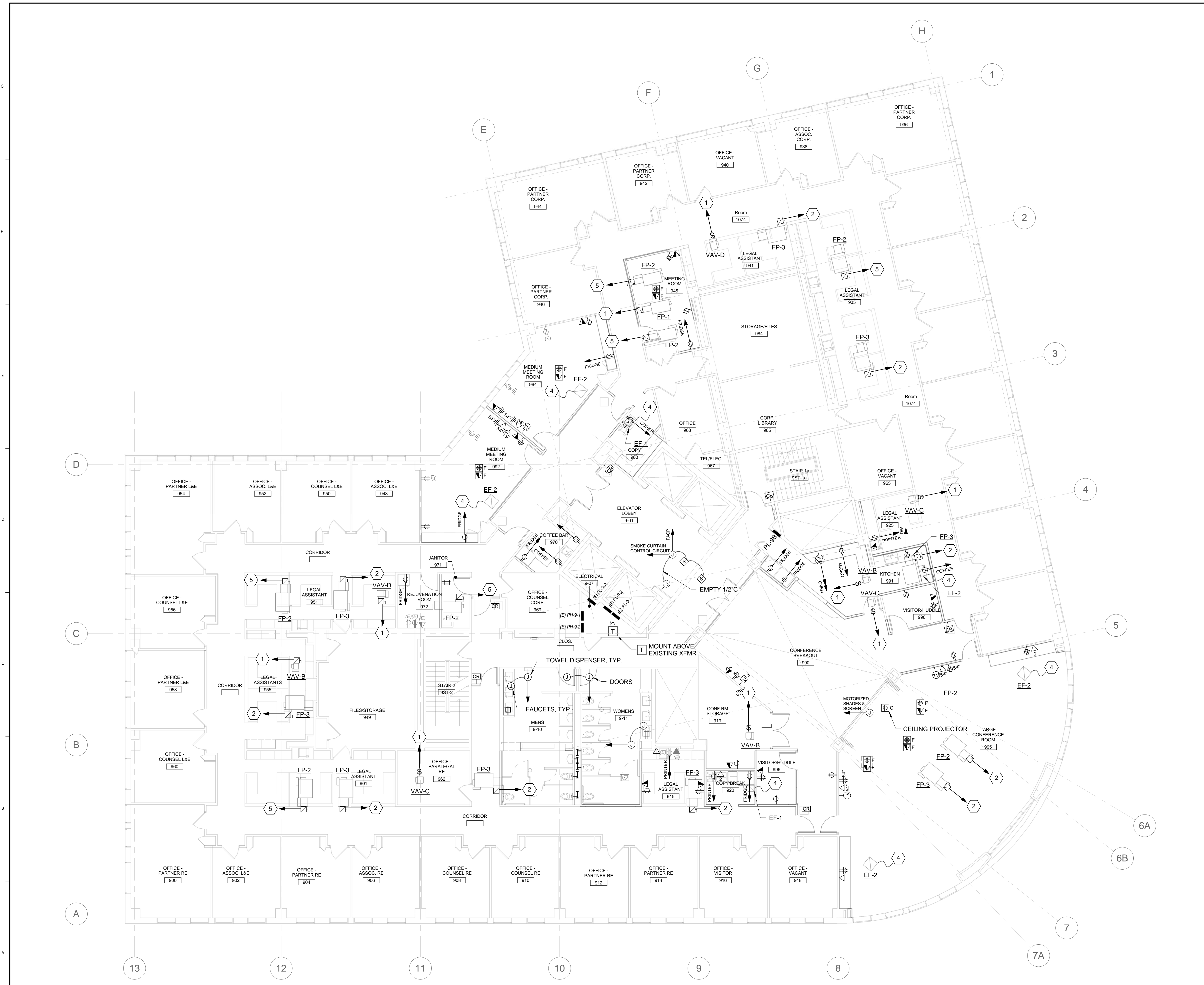
Drawing Title

FLOOR 9 POWER
AND SYSTEMS
PLAN

Scale: 1/8" = 1'-0"

Drawing Number

EP-10.3



- | B9 | DRAWING NOTES |
|----|--|
| 1 | WIRE AND CONNECT TO 20A 1P CB 277V CIRCUIT WITH (2)#12, (1)#12G. PROVIDE 20A 1P CBs AS NEEDED. |
| 2 | WIRE AND CONNECT TO EXISTING 277V PANEL USING (2)#8, (1)#10G. PROVIDE 50A 1P CIRCUIT BREAKER IN EXISTING PANEL. |
| 3 | WIRE AND CONNECT TO EXISTING 480V PANEL USING (3)#10, (1)#10G. PROVIDE 30A 3P CIRCUIT BREAKER IN EXISTING PANEL. |
| 4 | WIRE AND CONNECT TO LOCAL 120V RECEPTACLE CIRCUIT. |
| 5 | WIRE AND CONNECT TO 30A 1P CB 277V CIRCUIT WITH (2)#10, (1)#10G. PROVIDE 30A 1P CBs AS NEEDED. |