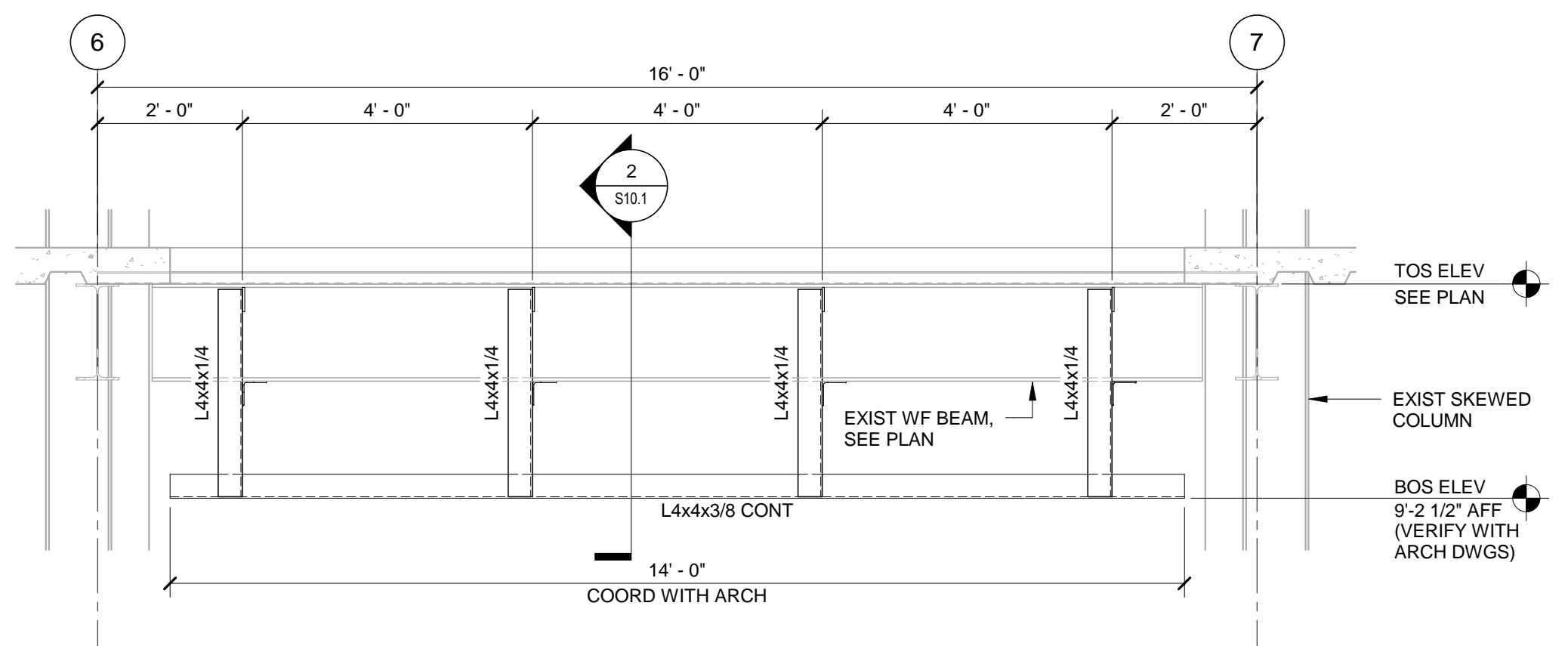
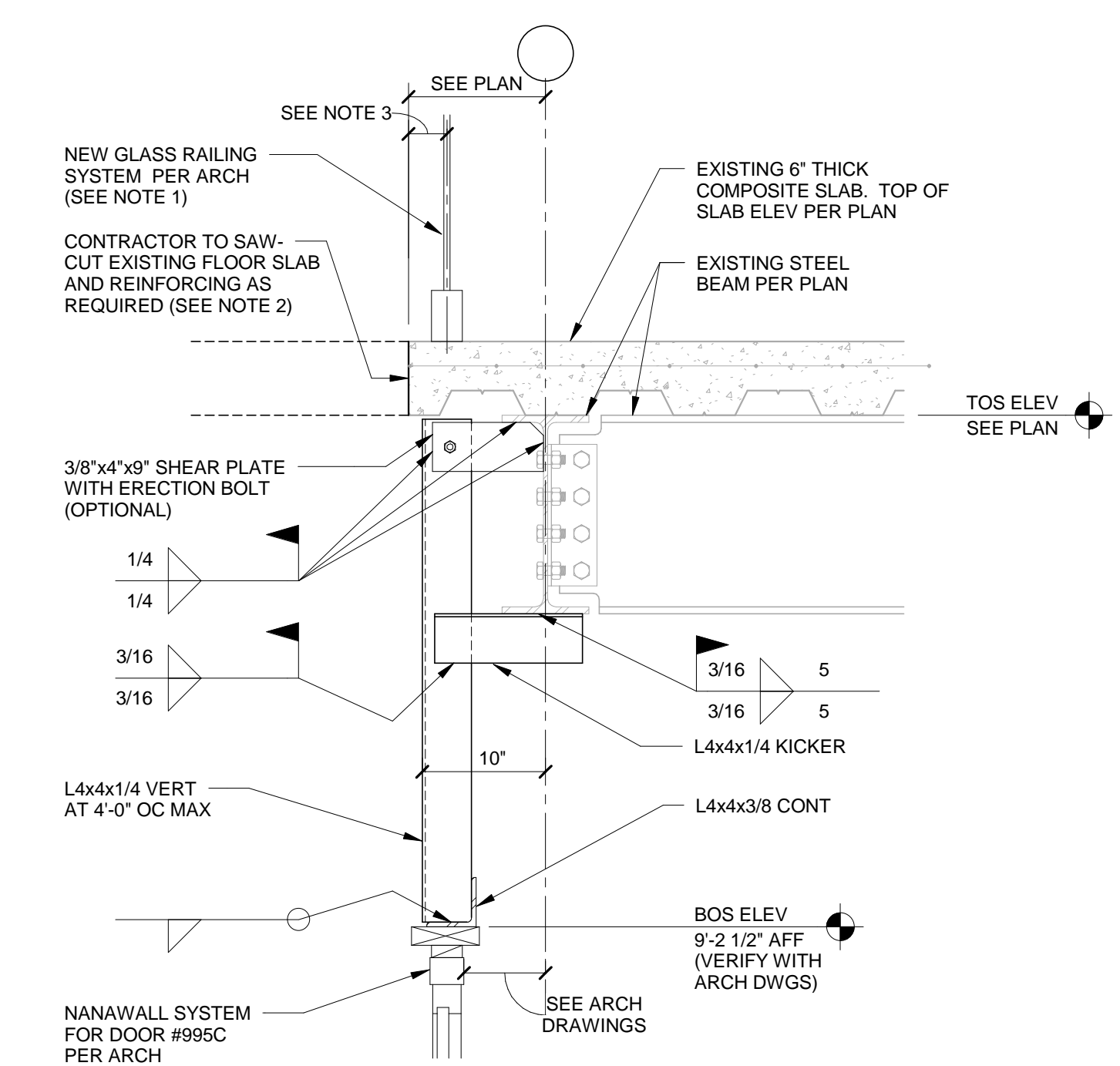


- PLAN NOTES:**
- PROJECT REFERENCE ELEVATION = 52'-0" AT STREET LEVEL.
  - TOP OF STEEL BEAM ELEVATION = 156'-10", TYPICAL U.N.O.
  - INDICATES SPAN DIRECTION OF EXISTING 6" THICK COMPOSITE SLAB (4" N.W. CONCRETE TOPPING WITH 6x6 - W2.9xW2.9 WWF ON 2" x 18 GA COMPOSITE METAL FLOOR DECK) UNO
  - EOS INDICATES EDGE OF SLAB
  - INDICATES OPENING THROUGH SLAB. COORDINATE SIZE AND LOCATION WITH ARCHITECTURAL DRAWINGS
  - CONTRACTOR TO BRACE AND SHORE THE EXISTING FLOOR SLAB, AS NECESSARY, DURING THE SAW-CUTTING AND REMOVAL OF THE EXISTING CONCRETE, REINFORCING, METAL DECKING AND STEEL BEAM.

**PARTIAL PLAN - LEVEL 10 FLOOR FRAMING**  
SCALE: 1/8" = 1'-0"

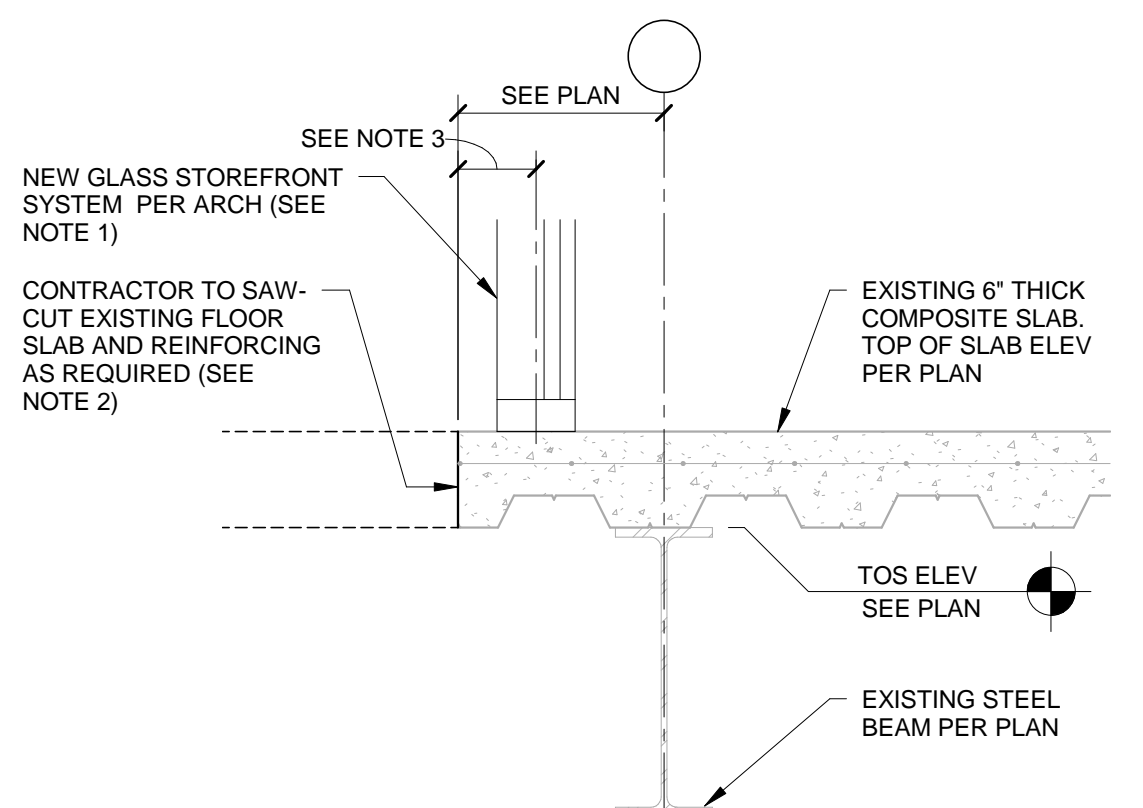


**1 NANAWALL #995C SUPPORT FRAMING ELEVATION**  
SCALE: 1/2" = 1'-0"



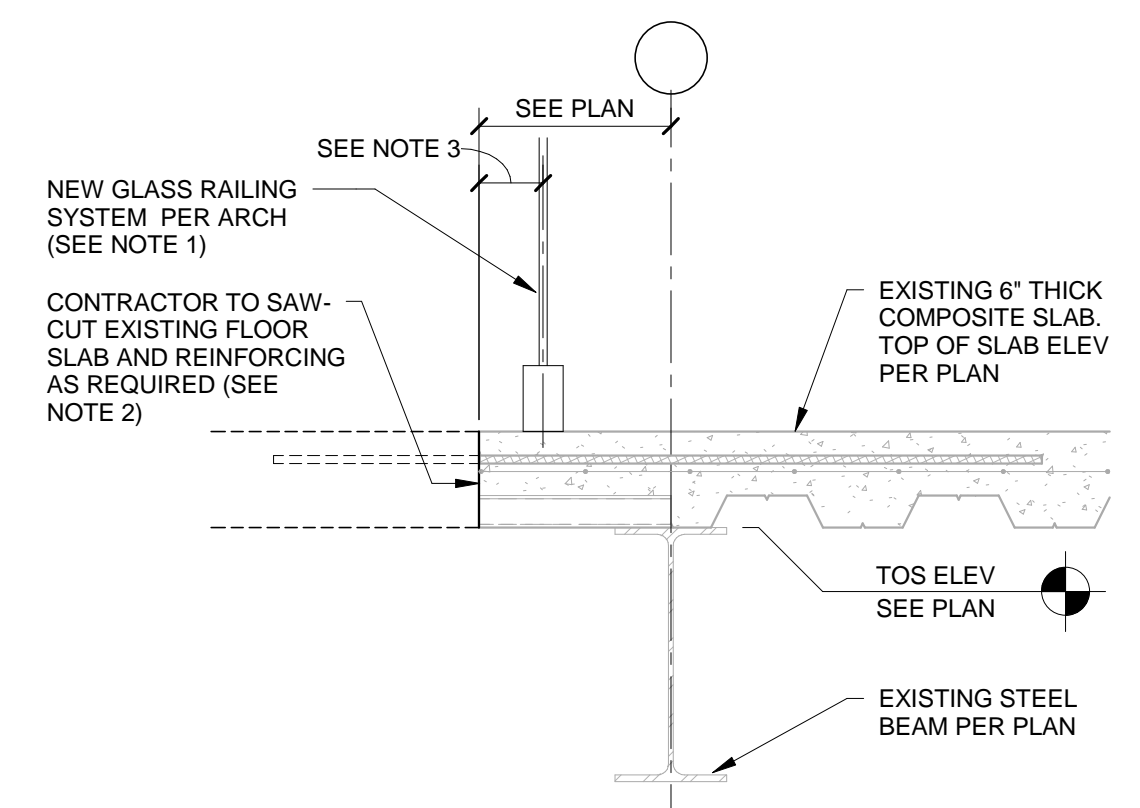
- NOTES:**
- NEW GLASS RAILING BASE ATTACHMENT TO EXISTING CONCRETE FLOOR SLAB IS TO BE DESIGNED AND SPECIFIED BY THE GLASS RAILING MANUFACTURER.
  - CONTRACTOR TO BRACE AND SHORE THE EXISTING FLOOR SLAB, AS NECESSARY, DURING THE SAW-CUTTING AND REMOVAL OF THE EXISTING CONCRETE, REINFORCING AND METAL DECK.
  - LOCATE PER ARCH DRAWINGS (4" MIN). COORDINATE WITH MANUFACTURER'S MINIMUM EDGE REQUIREMENTS FOR PROPER ASSEMBLY ANCHORAGE.
  - NANAWALL HEAD ATTACHMENT TO STEEL SUPPORT FRAME TO BE DESIGNED AND SPECIFIED BY DOOR MANUFACTURER.

**2 SECTION - SLAB**  
SCALE: 1" = 1'-0"



- NOTES:**
- NEW STOREFRONT BASE ATTACHMENT TO EXISTING CONCRETE FLOOR SLAB TO BE DESIGNED AND SPECIFIED BY THE GLASS STOREFRONT MANUFACTURER.
  - CONTRACTOR TO BRACE AND SHORE THE EXISTING FLOOR SLAB, AS NECESSARY, DURING THE SAW-CUTTING AND REMOVAL OF THE EXISTING CONCRETE, REINFORCING AND METAL DECK.
  - LOCATE PER ARCH DRAWINGS (4" MIN). COORDINATE WITH MANUFACTURER'S MINIMUM EDGE REQUIREMENTS FOR PROPER ASSEMBLY ANCHORAGE.

**3 SECTION - SLAB**  
SCALE: 1" = 1'-0"



- NOTES:**
- NEW GLASS RAILING BASE ATTACHMENT TO EXISTING CONCRETE FLOOR SLAB IS TO BE DESIGNED AND SPECIFIED BY THE GLASS RAILING MANUFACTURER.
  - CONTRACTOR TO BRACE AND SHORE THE EXISTING FLOOR SLAB, AS NECESSARY, DURING THE SAW-CUTTING AND REMOVAL OF THE EXISTING CONCRETE, REINFORCING AND METAL DECK.
  - LOCATE PER ARCH DRAWINGS (4" MIN). COORDINATE WITH MANUFACTURER'S MINIMUM EDGE REQUIREMENTS FOR PROPER ASSEMBLY ANCHORAGE.

**4 SECTION - SLAB**  
SCALE: 1" = 1'-0"

THIS DRAWING IS THE PROPERTY OF CANAL 5 STUDIO AND IS NOT TO BE COPIED OR REPRODUCED IN PART OR WHOLE. 2014 © CANAL 5 STUDIO

Mark	Date	Description
	06/30/16	DESIGN DEVELOPMENT

Project Status

**ISSUED FOR CONSTRUCTION**  
SEPTEMBER 21, 2016

Drawing Title

**PARTIAL PLAN AND DETAILS**

Scale: As indicated

Drawing Number

**S10.1**