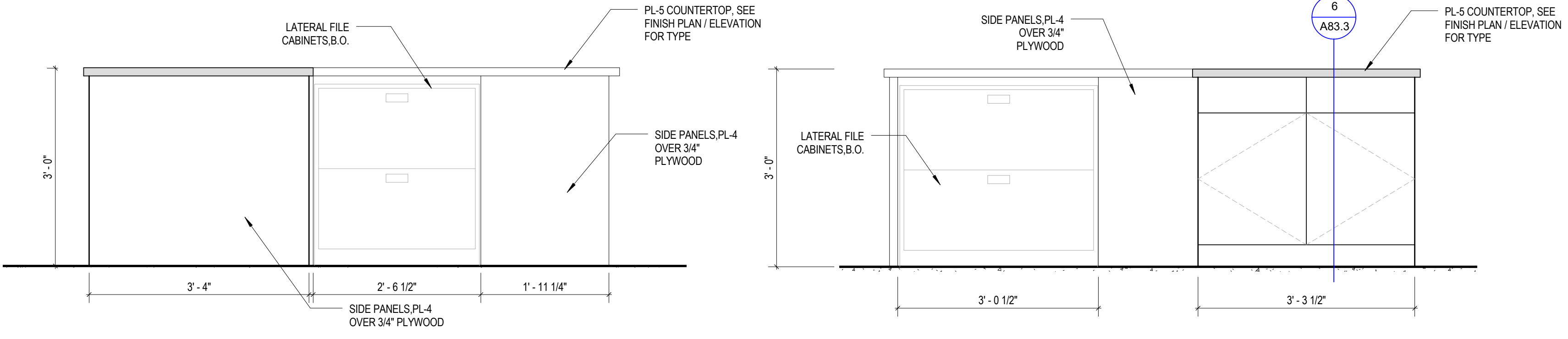


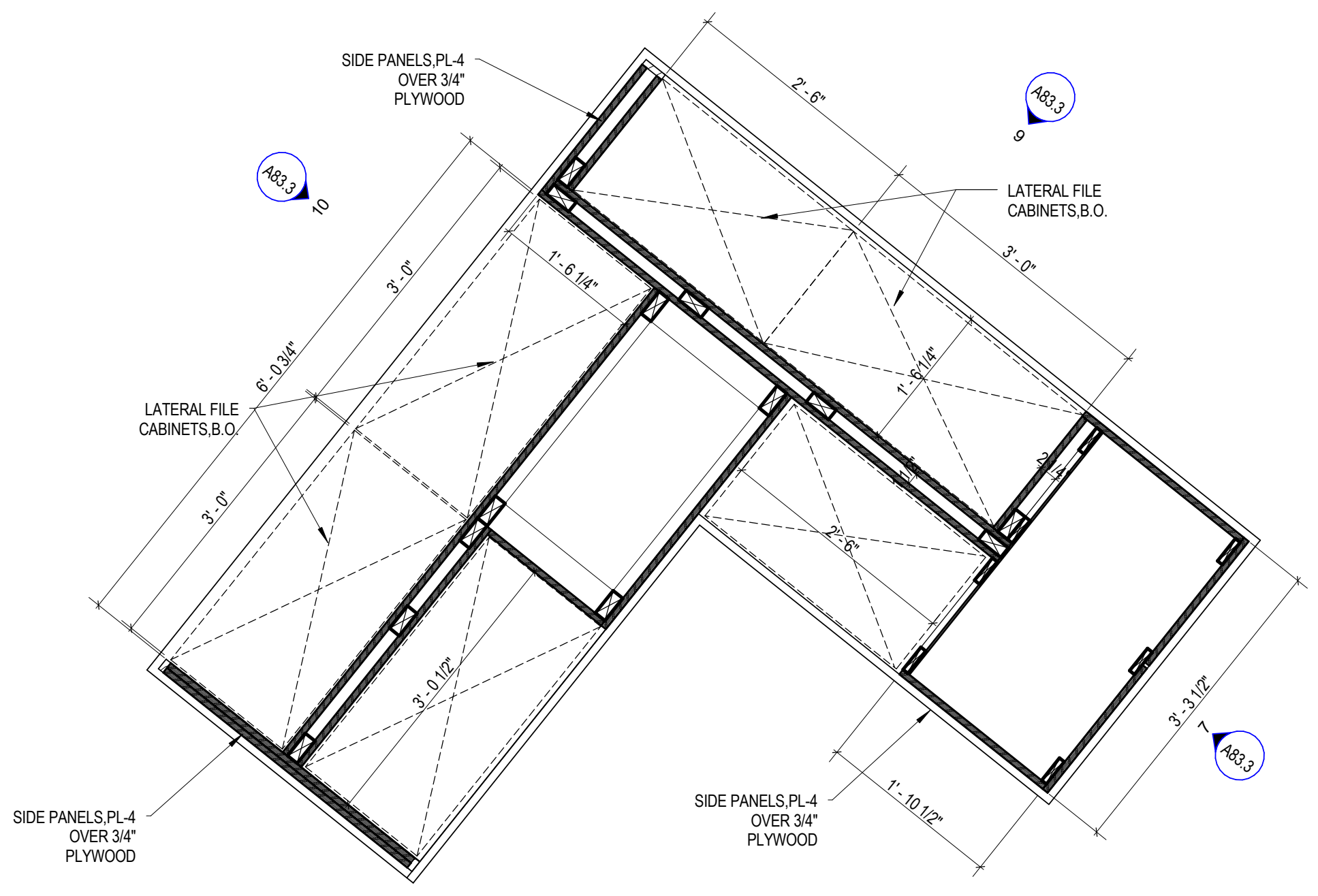
10 SOUTH ELEVATION  
 3/4" = 1'-0"

9 WEST ELEVATION  
 3/4" = 1'-0"

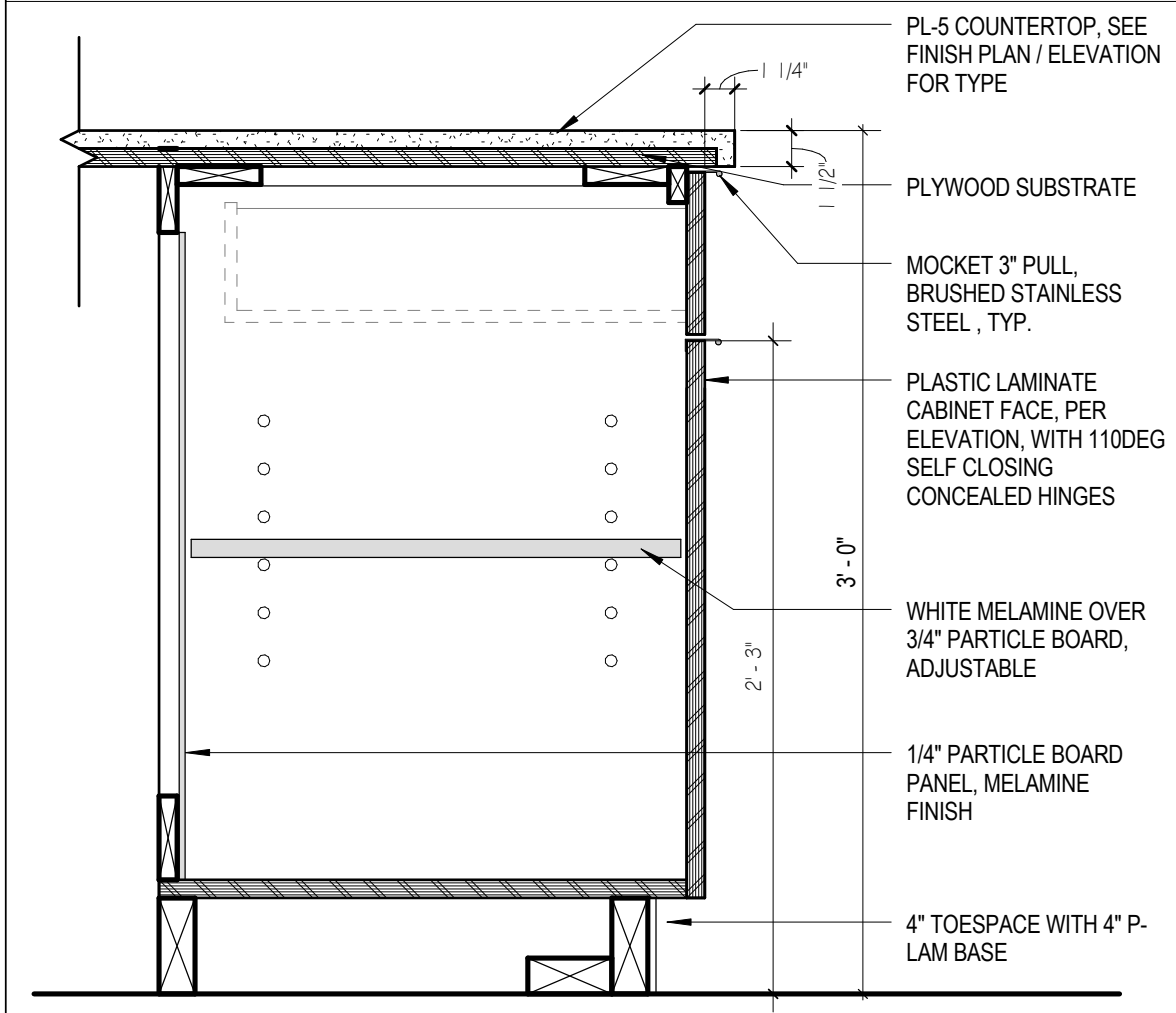


8 EAST ELEVATION  
 3/4" = 1'-0"

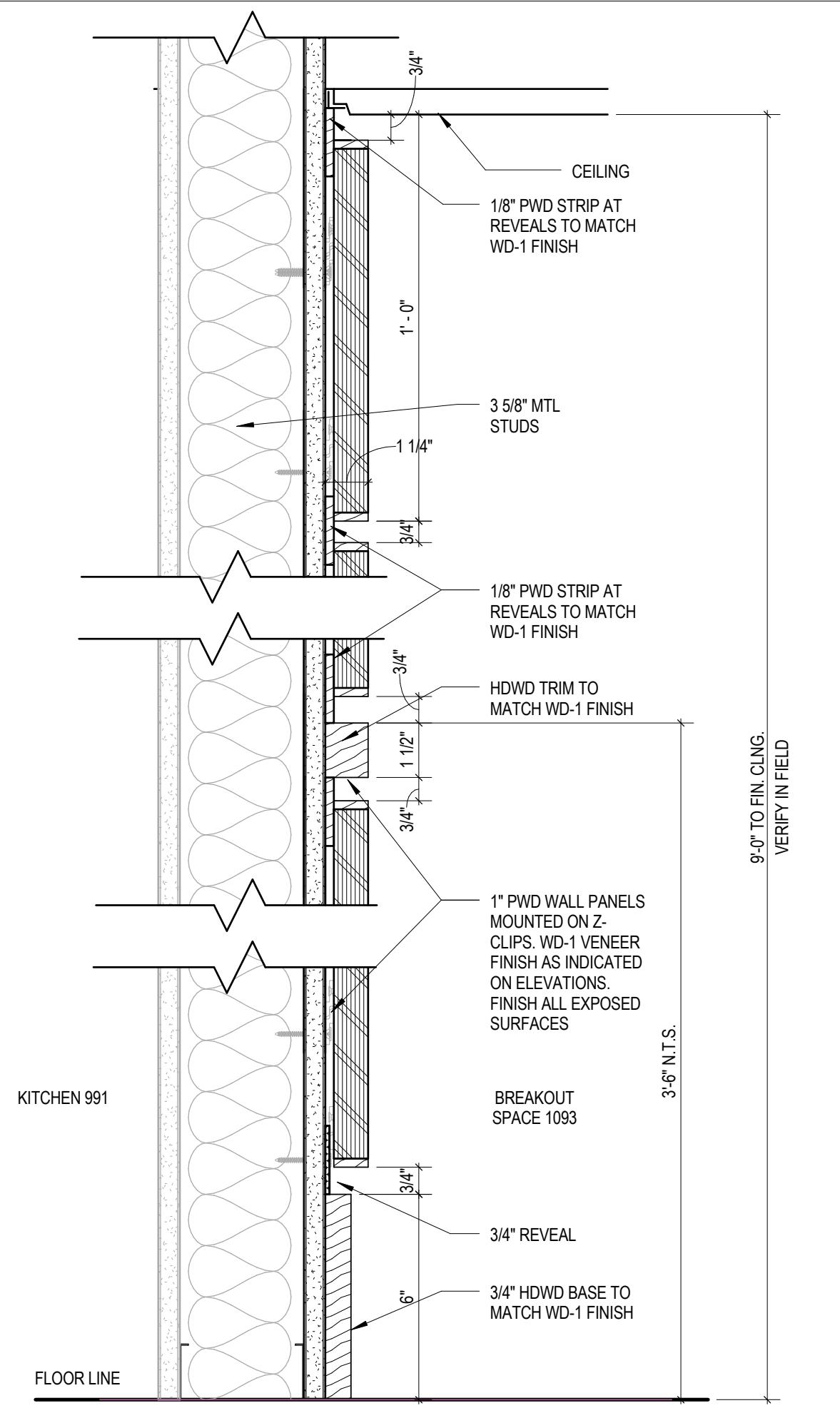
7 NORTH ELEVATION  
 3/4" = 1'-0"



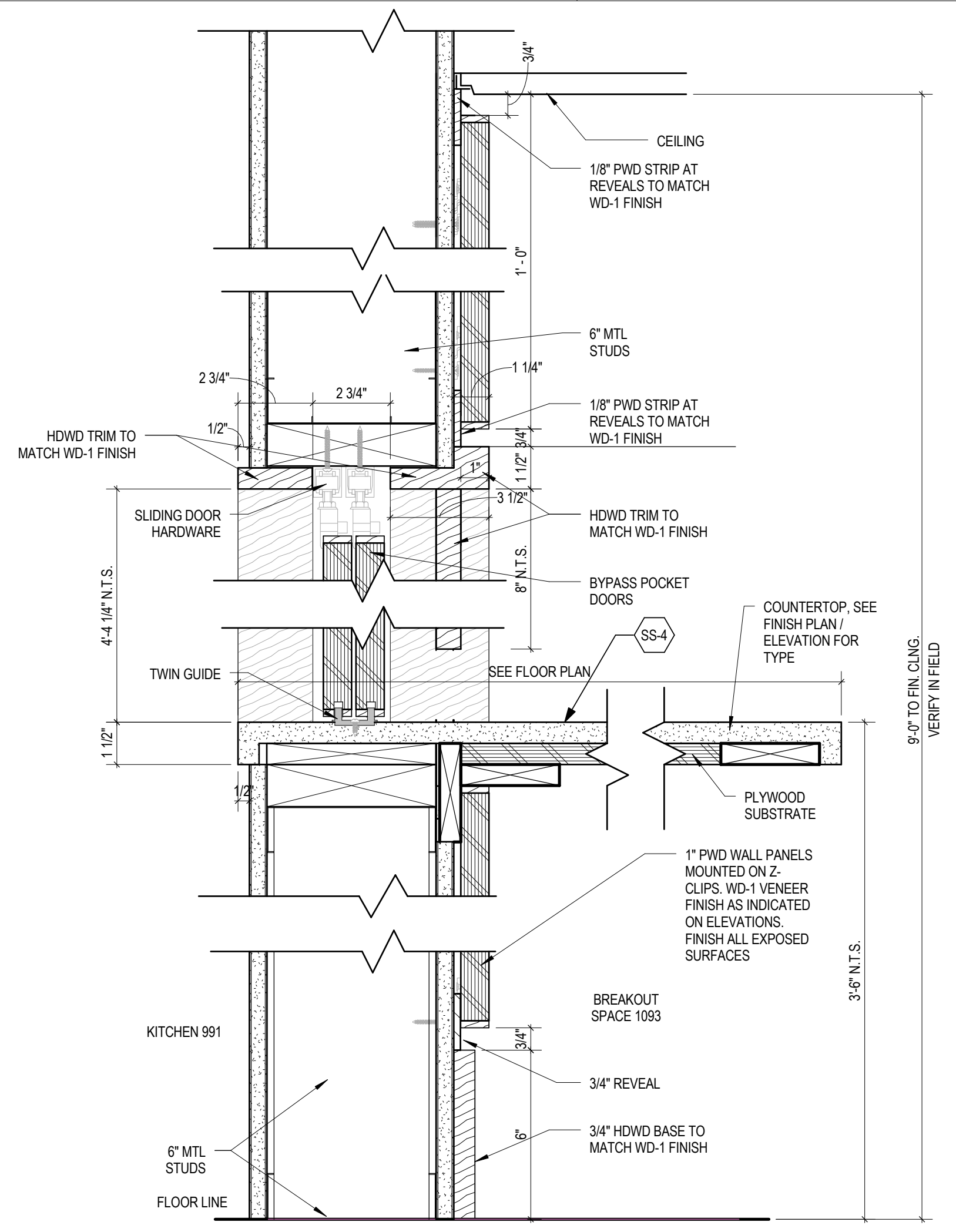
5 COPY/MAIL CENTER 725 -ISLAND  
 3/4" = 1'-0"



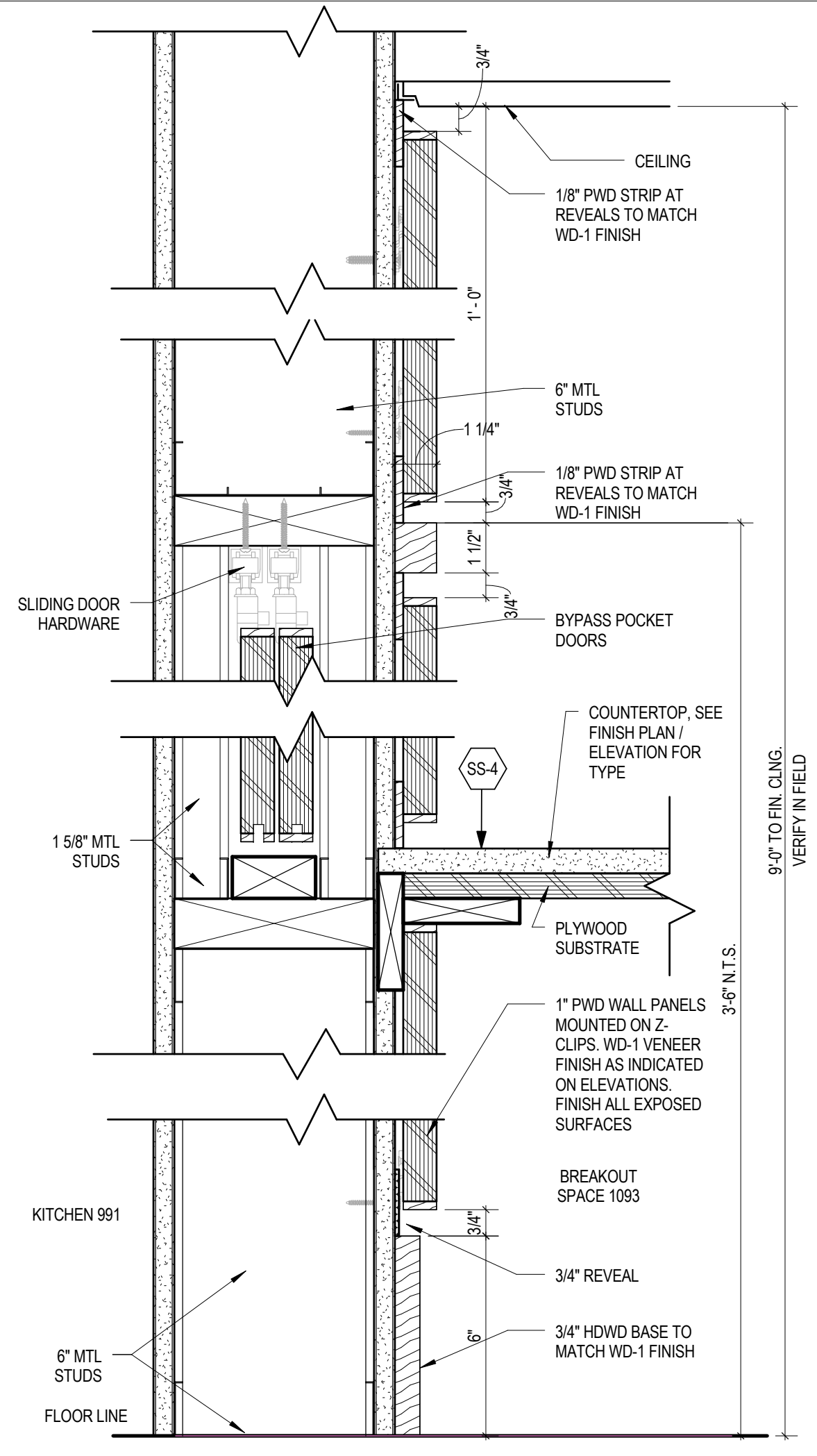
6 CASEWORK - ISLAND SECTION  
 1 1/2" = 1'-0"



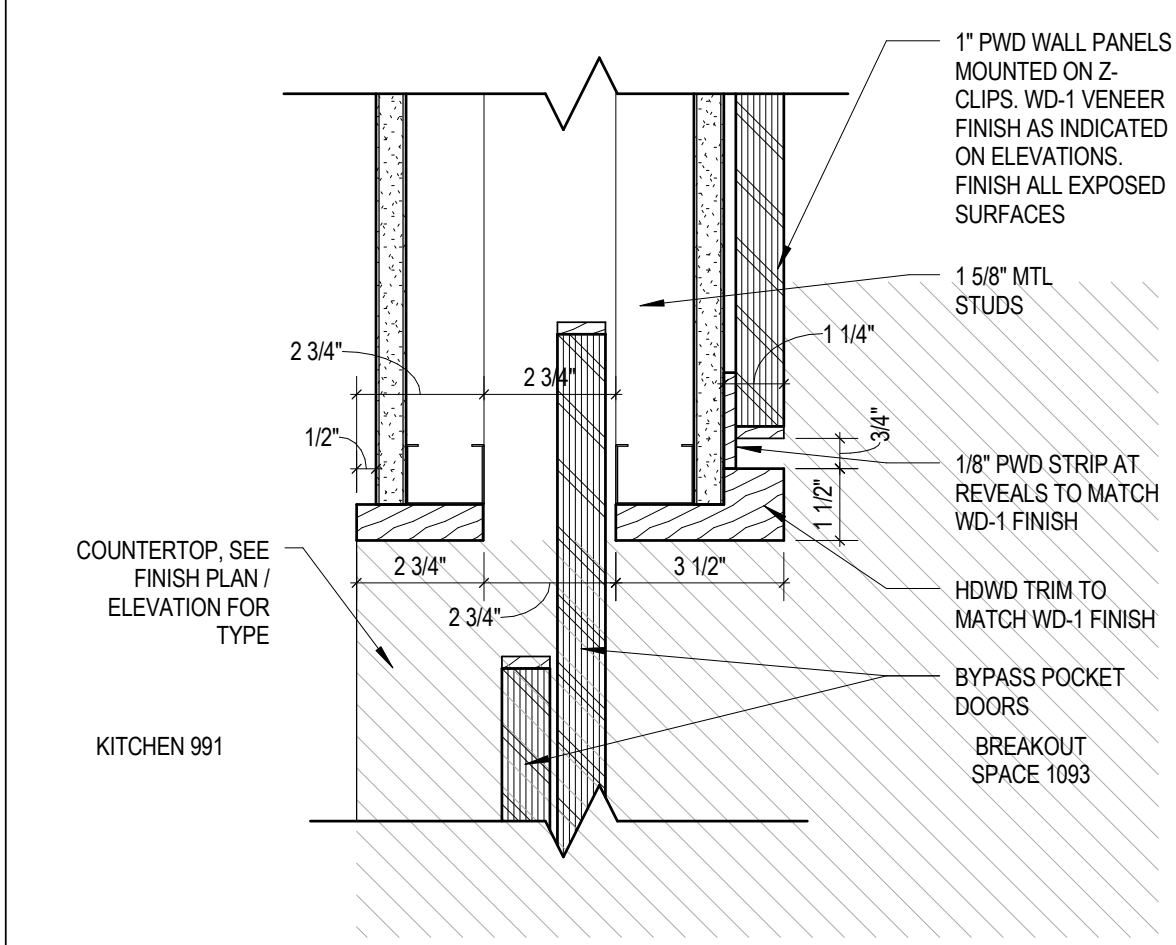
3 MILLWORK DETAIL  
 3" = 1'-0"



2 MILLWORK DETAIL  
 3" = 1'-0"



1 MILLWORK DETAIL  
 3" = 1'-0"



4 MILLWORK DETAIL  
 3" = 1'-0"

THIS DRAWING IS THE PROPERTY OF CANAL 5 STUDIO AND IS NOT TO BE COPIED OR REPRODUCED IN PART OR WHOLE. 2014 © CANAL 5 STUDIO

Mark Date Description

Project Status

**ISSUED FOR CONSTRUCTION**

SEPTEMBER 21, 2016

Drawing Title

**MILLWORK DETAILS**

Scale: As indicated

Drawing Number

**A83.3**