

CODE SUMMARY:

RENOVATION AREA:
7TH FLOOR 10,480 S.F.
8TH FLOOR 17,940 S.F.
9TH FLOOR 17,940 S.F.
10TH FLOOR 17,517 S.F.
TOTAL: 63,877 S.F.

OCCUPANCY CLASSIFICATION:
IBC 2009: GROUP B, BUSINESS
NFPA 101 2009: EXISTING BUSINESS

CONSTRUCTION TYPE:
IBC 2009: TYPE I-A
YEAR CONSTRUCTED: 1987

FIRE PROTECTION:
FULLY SPRINKLERED

OCCUPANT LOAD:
7TH FLOOR 10,480 BUSINESS S.F./100= **105 OCCUPANTS**

8TH FLOOR 16,147 BUSINESS S.F./100= 162
920 LIBRARY S.F./100= 10
873 LOUNGE S.F./15= 58
TOTAL: **230 OCCUPANTS**

9TH FLOOR 16,526 BUSINESS S.F./100= 166
1,414 CONF. RM S.F./15= 94
TOTAL: **260 OCCUPANTS**

10TH FLOOR 17,517 BUSINESS S.F./100= **176 OCCUPANTS**

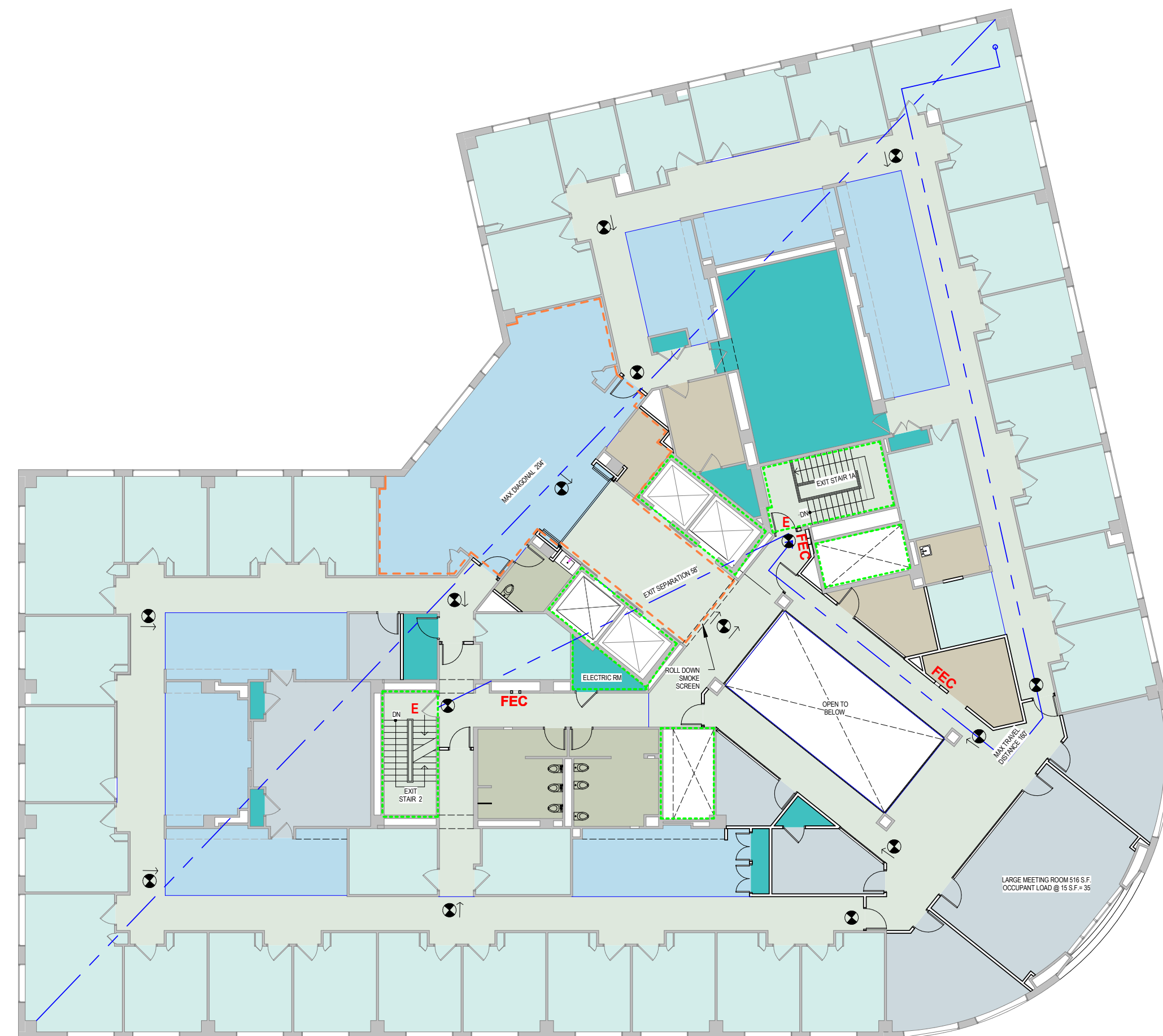
TOTAL OCCUPANT LOAD **771 OCCUPANTS**

LIFE SAFETY KEY

- EXIT** Exit Discharge
- E** Exit Access
- FEC** Fire Extinguisher Cabinets
- Smoke Partition
- One Hour Rated Fire Partition
- Two Hour Rated Fire Barrier
- Dead End Corridors and Common Path of Travel
- Maximum Diagonal Distance
- Exit Sign

- EGRESS/CIRCULATION
- OFFICE
- OPEN WORK
- MEETING
- STAFF/Common
- STORAGE/UTILITY
- TOILET

- EGRESS/CIRCULATION
- OFFICE
- OPEN WORK
- MEETING
- STAFF/Common
- STORAGE/UTILITY
- TOILET



4 FLOOR 10 LIFE SAFETY PLAN
1/16" = 1'-0"



2 FLOOR 8 LIFE SAFETY PLAN
1/16" = 1'-0"



3 FLOOR 9 LIFE SAFETY PLAN
1/16" = 1'-0"



1 FLOOR 7 LIFE SAFETY PLAN
1/16" = 1'-0"

THIS DRAWING IS THE PROPERTY OF CANAL 5 STUDIO AND IS NOT TO BE COPIED OR REPRODUCED IN PART OR WHOLE. 2014 © CANAL 5 STUDIO

Mark Date Description
Project Status
ISSUED FOR CONSTRUCTION

SEPTEMBER 21, 2016

Drawing Title

LIFE SAFETY PLANS

Scale: 1/16" = 1'-0"

Drawing Number

A01.1