

KEY NOTES:

L01...
CONNECT LIGHTS TO EXISTING LIGHTING CIRCUIT IN THIS AREA. SEE LIGHTING CONTROL DETAIL ON DRAWING E00.1 FOR ROOM LIGHTING CONTROL REQUIREMENTS. COORDINATE LIGHTING LOCATIONS WITH EQUIPMENT.

P01...
SEE ACCESS CONTROL DETAIL ON DRAWING E00.1 FOR ACCESS CONTROL REQUIREMENTS. INTENT IS TO PROVIDE BOXES AND CONDUITS FOR INSTALLATION OF ACCESS CONTROLS BY OTHERS. CONNECT POWER SUPPLY TO PANEL PL3A, CIRCUIT AS INDICATED WITH 2#12&G-3/4"C.

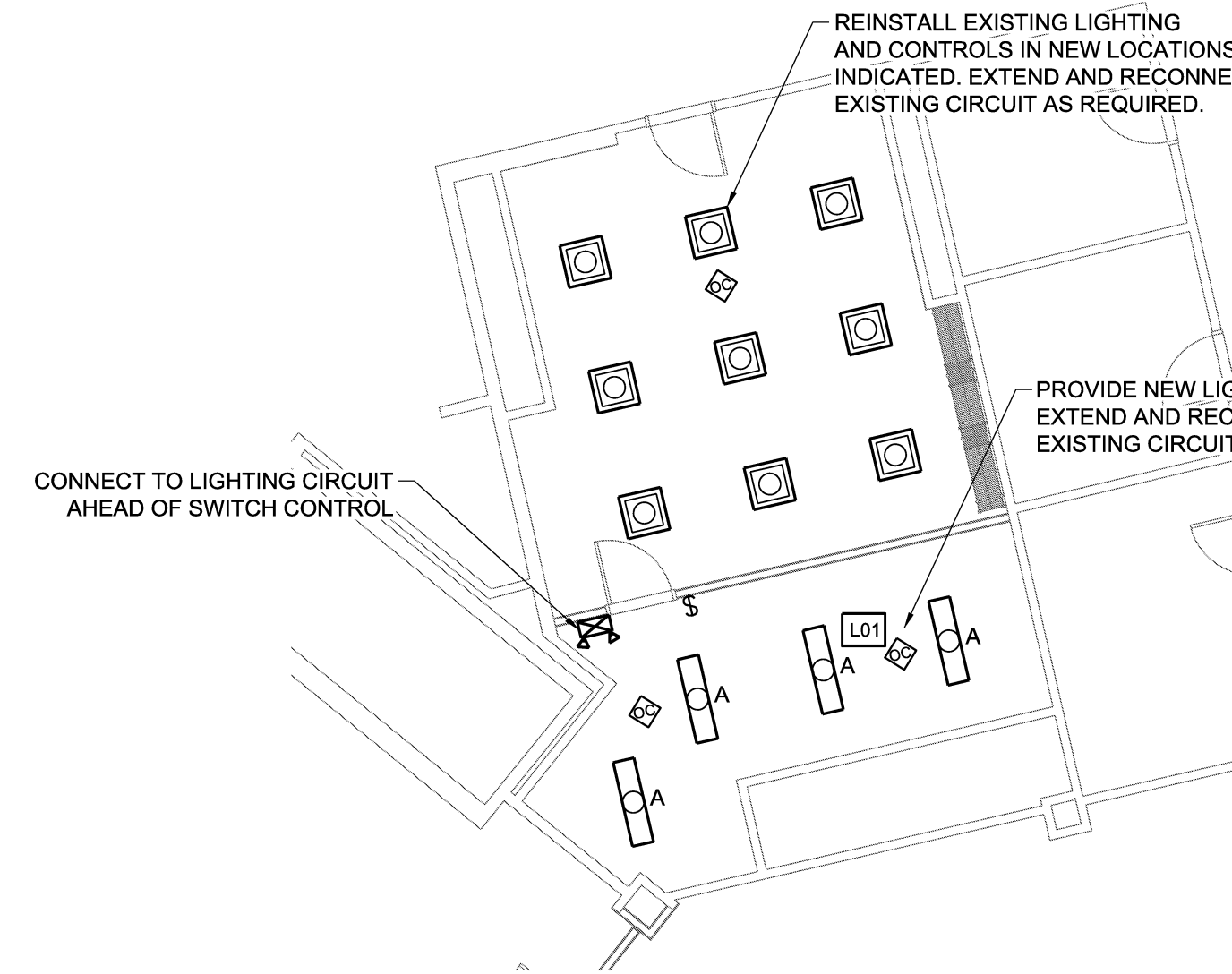
P02...
CONNECT RCPTS TO PANEL PL3A, CIRCUITS AS INDICATED WITH 2#12&G-3/4"C.

P03...
CONNECT RCPTS TO PANEL PL3A CIRCUITS AS INDICATED WITH 3#10&G-3/4"C.

P04...
DUCTLESS AC UNIT. CONNECT TO PANEL PL3 - SECTION 3 CIRCUIT AS INDICATED WITH 3#12&G-3/4"C. PROVIDE NEW 20A, 2P BREAKERS IN SPACES INDICATED. RUN 3#12&G-3/4"C TO CONDENSING UNIT ABOVE CEILING IN STORAGE ROOM. COORDINATE WITH MECHANICAL DRAWINGS.

P05...
SEE GROUND BUS DETAIL ON DRAWING E00.1 FOR GROUND BUS REQUIREMENTS. CONNECT TO PANEL PL3 GROUND BUS. PROVIDE GROUNDING CONDUCTOR AS REQUIRED TO GROUND ANTI-STATIC FLOOR TILE.

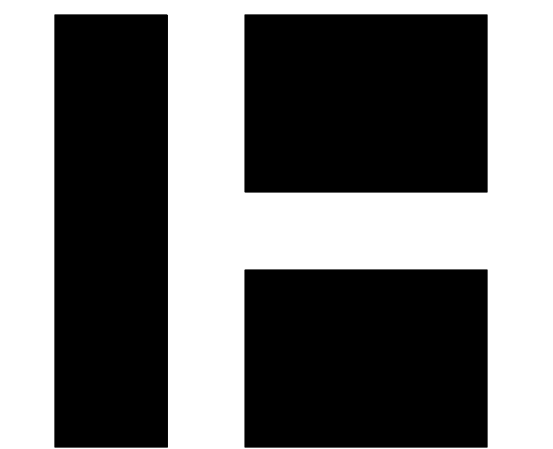
P06...
PROVIDE CABLE TRAY - 12" 16 GAUGE TUBULAR STEEL WITH 9" RUNG SPACING, BLACK POWDER COATED, 45LB/FT - HUBBELL HL SERIES, OR APPROVED EQUAL. PROVIDE ALL HARDWARE TO WALL AND RACK MOUNT WHERE INDICATED ON DRAWINGS.



2 LIGHTING PART PLAN
SCALE: 1/8" = 1'-0"



1 PART PLAN - ELECTRICAL
SCALE: 1/8" = 1'-0"
0 4 8 12



HARRIMAN

AUBURN PORTLAND MANCHESTER

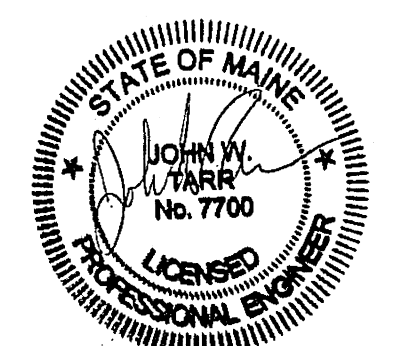
**TD BANK
ONE PORTLAND SQUARE
3RD FLOOR IT ROOM
RELOCATION**

PORTLAND, ME

Harriman Project No. 15494

Key Plan Prog North

Issues and Revisions		
Mark	Date	Description
	10-20-15	CONSTRUCTION DOCUMENTS



Drawing Scales

PA / PE: JWT © 2015
Drawn By: DSH Harriman Associates

**ELECTRICAL
FLOOR PLAN**

E10.1