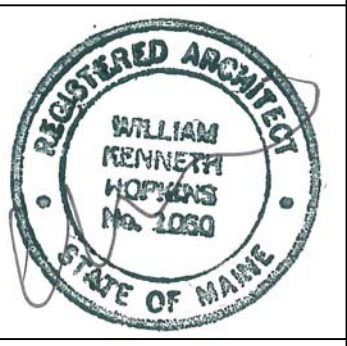
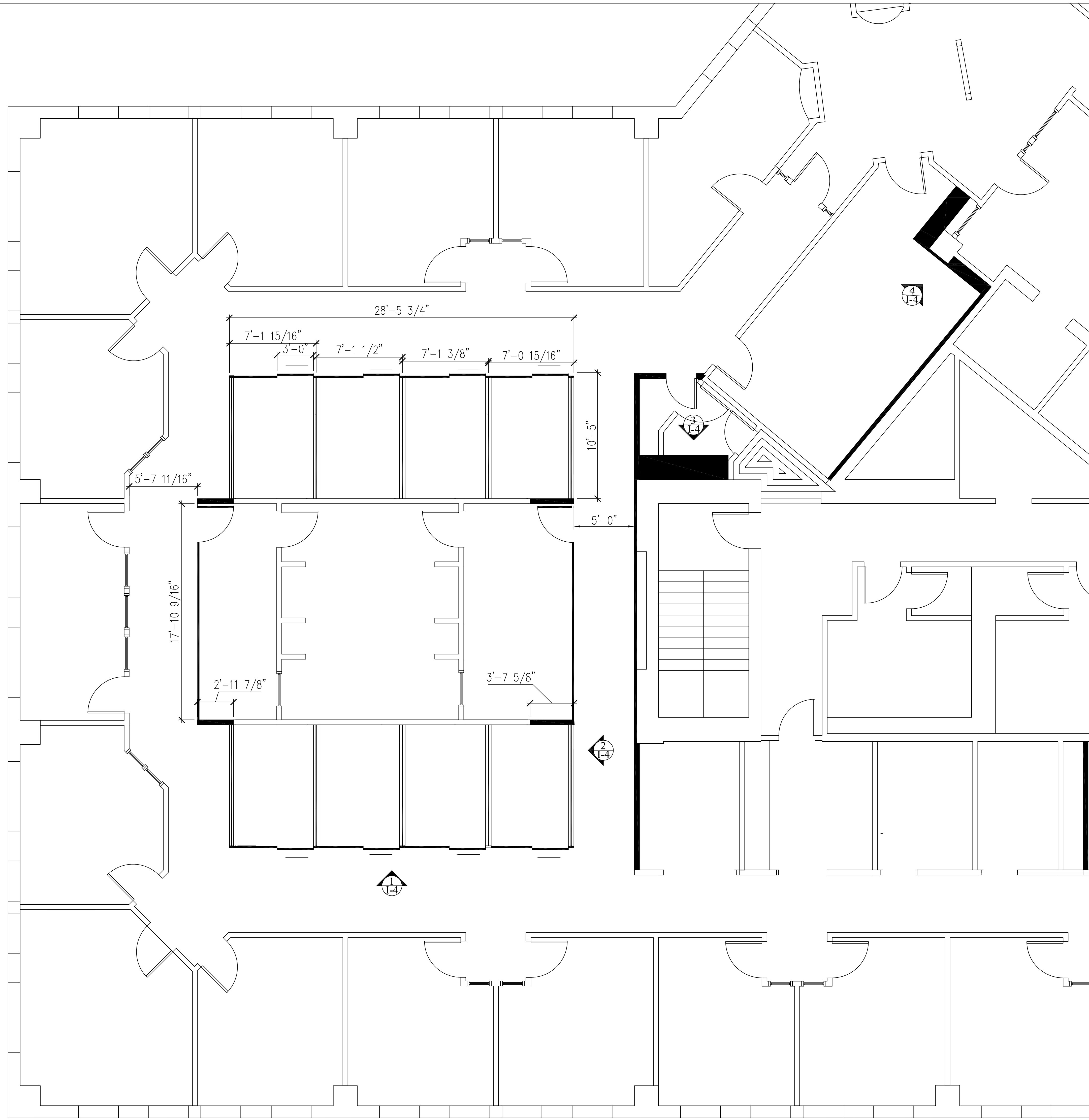


LEGEND

- MILLWORK
- TECH RE DO
- REMOVE WALL
- NEW WALLS
- GLASS
- LOW WALL



M Designs
Portland, Maine
207-233-5517 CELL
MDESIGNS@MAINE.PR.COM

ARCHITECTURE
architects
48 Union Wharf Portland, Maine 04101
(207) 772-6022 Fax (207) 772-4056

Project:
H M PAYSON
ONE PORTLAND
SQUARE
PORTLAND, MAINE

Revisions:

Date: MAY 5, 2015
Scale: 1/4" = 1'-0"
PHASE ONE - 1, 2, 7, 4B
FLOOR PLAN

I-1