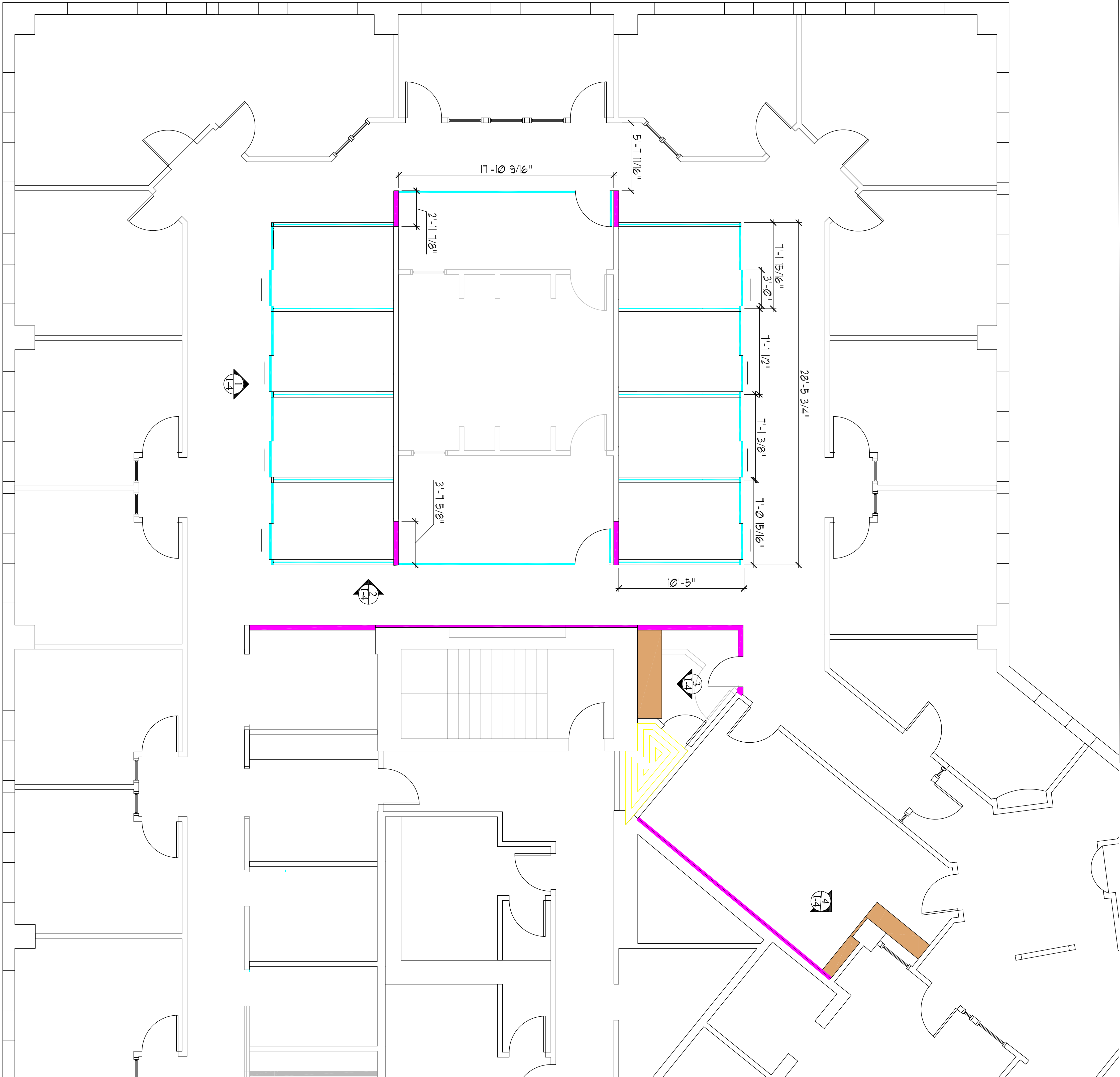


LEGEND

- MILLWORK
- TECH RE DO
- REMOVE WALL
- NEW WALLS
- GLASS
- LOW WALL



I-1

PHASE ONE- 1,2,7,4B

1/4" = 1'-0"

MAY 5, 2015

FLOOR PLAN

1.

M Designs
Portland, Maine
207-233-5517 CELL

MDESIGNS@MAINE.RR.COM

Project:

H M PAYSON
ONE PORTLAND SQUARE
PORTLAND, MAINE