



Graham Architects

Kennebunkport, Maine

T:207.967.8850
F:207.967.8851

www.grahamarchitects.com

PROJECT

HM Payson

One Portland Square, 5th Floor
Portland, Maine 04101

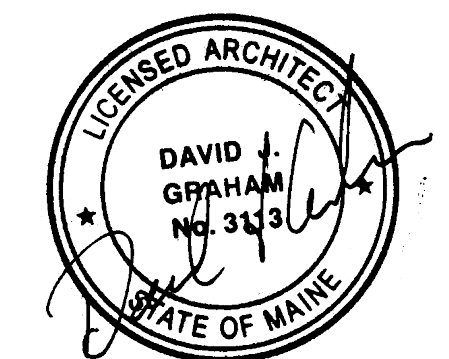
ISSUED 02.02.14

CLIENT

H.M. Payson
One Portland Square, 5th Floor
Portland, Maine 04101

CONTRACTOR

-
-
-



INFORMATION

Path: m:\architecture\CBRE\HMPayson

Issue Date: 02.03.14

Drawn By: DG

Checked By: DG

Revision:

- 1.
- 2.
- 3.
- 4.

TITLE

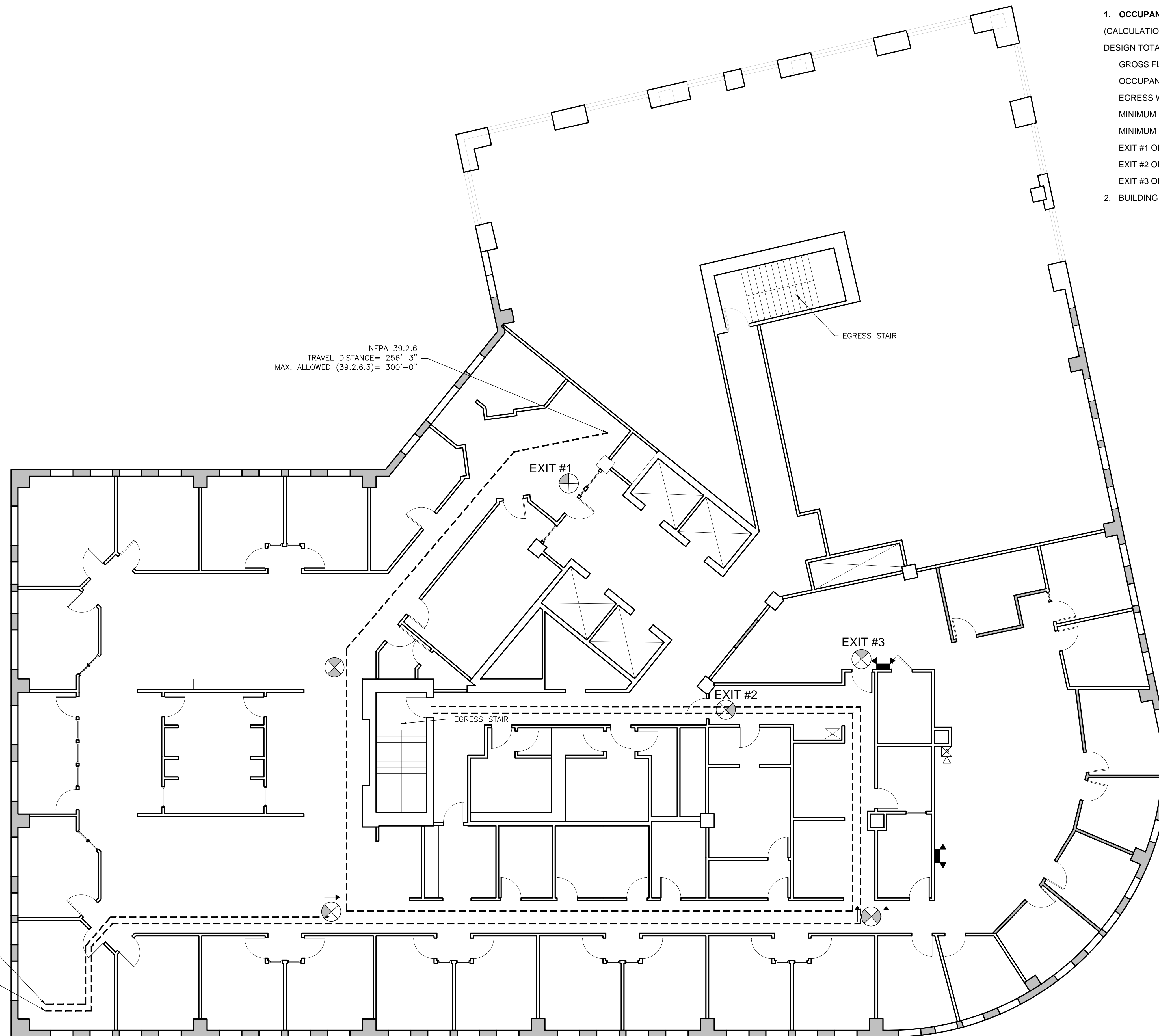
Egress Diagram

SCALE: AS NOTED

©2014 Graham Architects All rights reserved. Information, material, and designs in this document are proprietary to and owned by Graham Architects and may not be disclosed to any third party, reproduced, posted on a global computer information network, or distributed in any way without the written consent from Graham Architects.

A0.1

- OCCUPANCY LOAD - MEANS OF EGRESS IBC CHAPTER 10**
(CALCULATION ARE FOR THE EGRESS WITH THE OCCUPIED SPACE)
DESIGN TOTAL FOR BUSINESS (B) USE CLASSIFICATION = 100 GROSS
GROSS FLOOR AREA = 10,806 SF
OCCUPANCY LOAD 10,806/100 = 108.06 (108)
EGRESS WIDTH PER OCCUPANT (IBC TABLE 1005.1) 0.2 INCHES
MINIMUM EGRESS WIDTH REQUIRE PER 1005, 108 OCC x .2 IN. = 21.6 INCHES
MINIMUM DOOR WIDTH (IBC 1008.1), CLEAR WIDTH OF NOT LESS THAN 32 INCHES
EXIT #1 OPENING WIDTH = 36"
EXIT #2 OPENING WIDTH = 36"
EXIT #3 OPENING WIDTH = 36"
- BUILDING IS FULLY SPRINKLED AND IS EQUIPPED WITH A FIRE ALARM SYSTEM.



NFPA 39.2.6
TRAVEL DISTANCE= 256'-3"
MAX. ALLOWED (39.2.6.3)= 300'-0"

NFPA 39.2.5.3.1
COMMON PATH OF TRAVEL= 52'-2"
MAX. ALLOWED (39.2.5.3)= 100'-0"

NFPA 39.2.6
TRAVEL DISTANCE= 124'-2"
MAX. ALLOWED (39.2.6.3)= 300'-0"

REFL. CEILING PLAN SYMBOLS LEGEND	
	DIRECTIONAL EXIT LIGHT
	AUTOMATIC EMERGENCY LIGHT
	MANUAL PULL STATION
	AUTOMATIC EMERGENCY LIGHT
	HORN AND STROBE
	STROBE

NOTE:
G.C. TO VERIFY EXISTING EXIST SIGNS AND EMERGENCY LIGHTS
THROUGHOUT THE SPACE. PROVIDE NEW IF REQUIRED