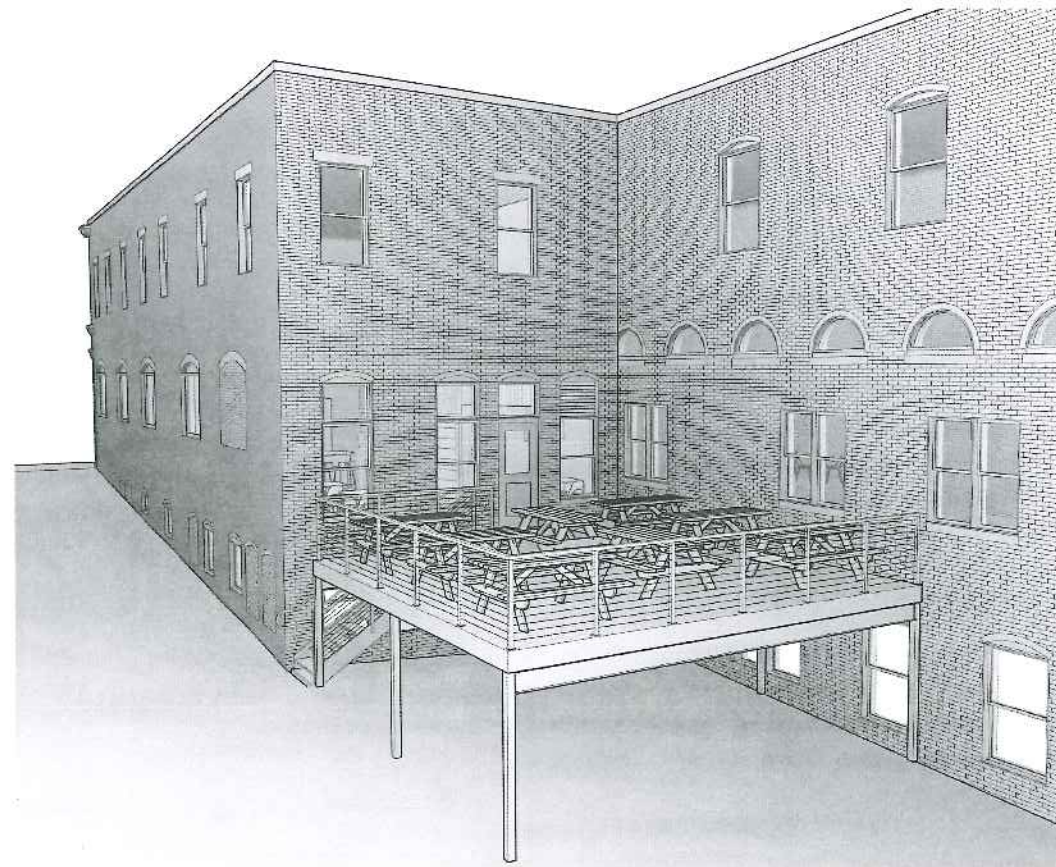


EL RAYO - 26 FREE STREET PORTLAND, MAINE



EL RAYO - FREE STREET
PORTLAND, MAINE
RENOVATION

BURN
architecture for life
200 South Street, Portland, ME 04101
Tel: 603.762.1212



PROJECT DESCRIPTION AND GENERAL SCOPE OF WORK

RENOVATION OF EXISTING INTERIOR SPACE FORMERLY OCCUPIED BY STATIONARY RETAILER TO BECOME "EL RAYO" RESTAURANT AND BAR PROVIDING EAT-IN BAR, TAKE-OUT SERVICE AND CONSTRUCTION OF NEW ELEVATED OUTDOOR DECK FOR SEASONAL OUTDOOR SEATING.

RENOVATED INTERIOR AREA: 1,770 SF
NEW OUTDOOR DECK AREA: 570 SF

EXISTING SPRINKLER SYSTEM WILL BE MODIFIED TO SUIT NEW INTERIOR LAYOUT AND FOR COMPLIANCE WITH NFPA 13.

IBC 2009 CODE REVIEW

CONSTRUCTION TYPE: III-B

SECTION 303 ASSEMBLY GROUP A
A-2: RESTAURANTS, TAVERNS AND BARS

OCCUPANT LOAD FACTORS (1024.1.1):
ASSEMBLY CONCENTRATED 7 SF/PERSON
ASSEMBLY STANDING 5 SF/PERSON
ASSEMBLY UNCONCENTRATED 15 SF/PERSON
COMMERCIAL KITCHENS 200 SF/PERSON

EXIT ACCESS TRAVEL DISTANCE (1016.1):
250 FT (SPRINKLERED)

NUMBER OF EXITS (1021.1): 1-500 OCCUPANTS: 2

NFPA 101 LIFE SAFETY CODE REVIEW

CONSTRUCTION TYPE (NFPA 22 TYPE III (200))

CLASSIFICATION OF OCCUPANCY:
NEW ASSEMBLY (RESTAURANT)/MERCANTILE

SPRINKLER SYSTEM:
FULLY SPRINKLERED (SUPERVISED PER NFPA 13)

OCCUPANT LOAD FACTORS (7.3.1.2):
ASSEMBLY CONCENTRATED 7 SF/PERSON
ASSEMBLY LESS CONCENTRATED 15 SF/PERSON
KITCHENS 100 SF/PERSON
BUSINESS USE 100 SF/PERSON

NUMBER OF EXITS (CH12 & CH38): 2

COMMON PATH OF TRAVEL (12.2.5.1.2):
75' (FEWER THAN 50 OCCUPANTS)
20' (MORE THAN 50 OCCUPANTS)

TRAVEL DISTANCE TO EXITS (12.2.6):
250 FT (SPRINKLERED)

12.3.3.3 ASSEMBLY AREAS, INTERIOR WALL AND CEILING FINISH MATERIALS COMPLYING WITH SECTION 10.2 SHALL BE CLASS A, B OR C IN GENERAL ASSEMBLY AREAS HAVING OCCUPANT LOADS OF FEWER THAN 300.

DRAWING LIST	
NUMBER	SHEET TITLE
A001	COVER SHEET
A101	FLOOR PLANS & REFLECTED CEILING PLAN
A201	EXTERIOR ELEVATIONS
A301	BUILDING SECTIONS & ELEVATION DETAIL
A401	ENLARGED BATHROOM PLAN & DETAILS

SYMBOL LEGEND	
	DETAIL NUMBER BUILDING SECTION DRAWING NUMBER
	DETAIL NUMBER CALL OUT DRAWING NUMBER
	CENTERLINE
	DOOR TAG
	ELEVATION INDICATOR
	ELEVATION TAG
	ELEVATION TAG
	NORTH ARROW
	REVISION
Room name 	ROOM TAG WITH NUMBER
	STRUCTURAL GRID BUBBLE
	WALL TAG
	WINDOW TAG

CONSULTANTS:
STRUCTURAL ENGINEER
AND ARCHITECT
100 South Street
Portland, ME 04101
Tel: 603.762.1212

REVISIONS:		
No.	Name	Date

ISSUED: 01/15/15
PROJECT No: 1533
DRAWN BY: RHP
CHECKED BY: RHP

SHEET TITLE:
COVER SHEET

A001